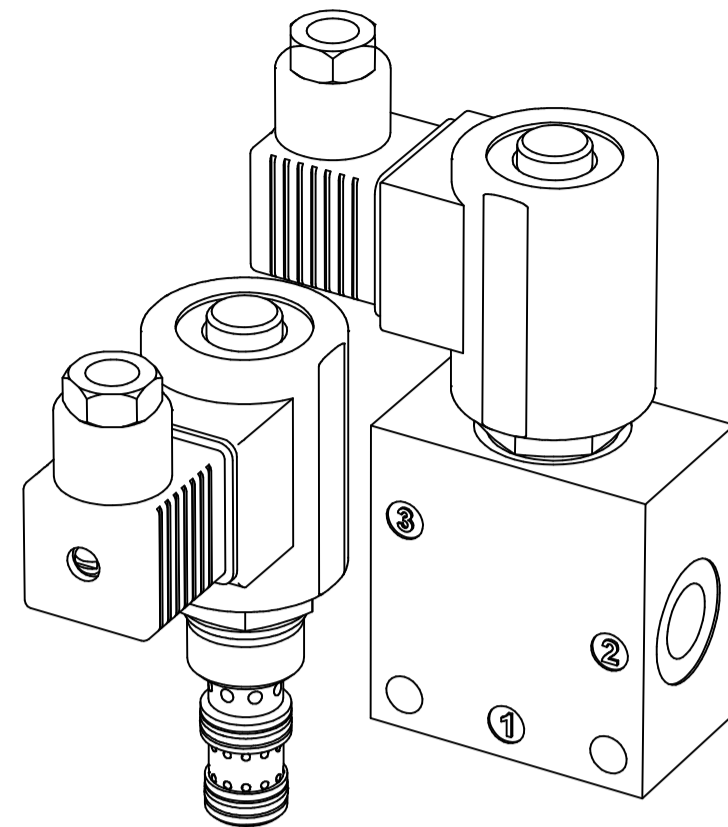
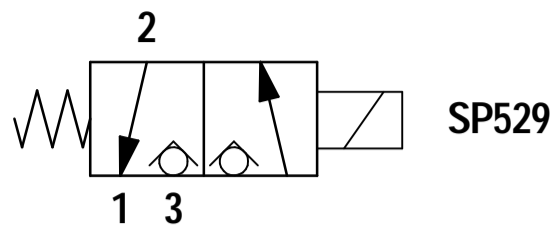




FLUID POWER SYMBOL



APPLICATION

A solenoid-operated, 3 way 2 position, poppet-type, screw-in hydraulic cartridge valve, designed to function as a load holding or blocking valve in applications requiring low internal leakage. Application areas may include actuator dumping circuits (like brakes), emergency lowering operations, circuit breaking systems and other areas of application in industrial and mobile hydraulic systems.

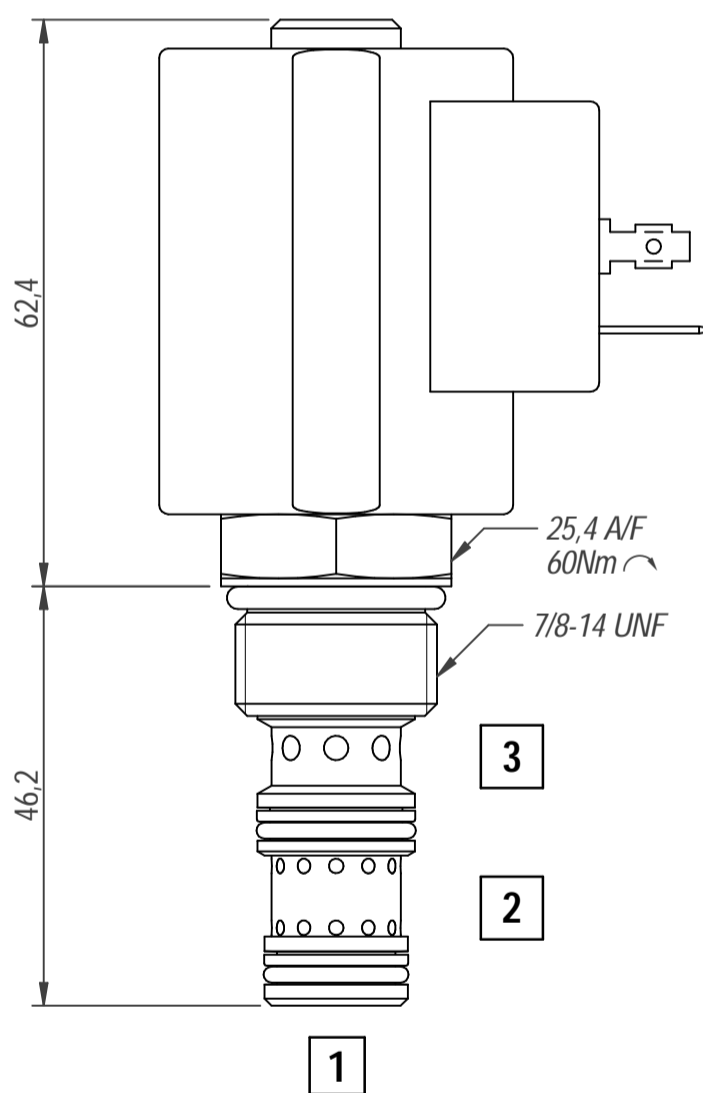
OPERATION

When de-energized the valve allows flow from Port 2 to Port 1. Reverse flow is generally not advisable. Port 3 is completely blocked by means of a metal on metal poppet seating. When energized, the poppet lifts to allow flow from Port 3 to Port 2 with Port 1 being blocked off with the metal seat.

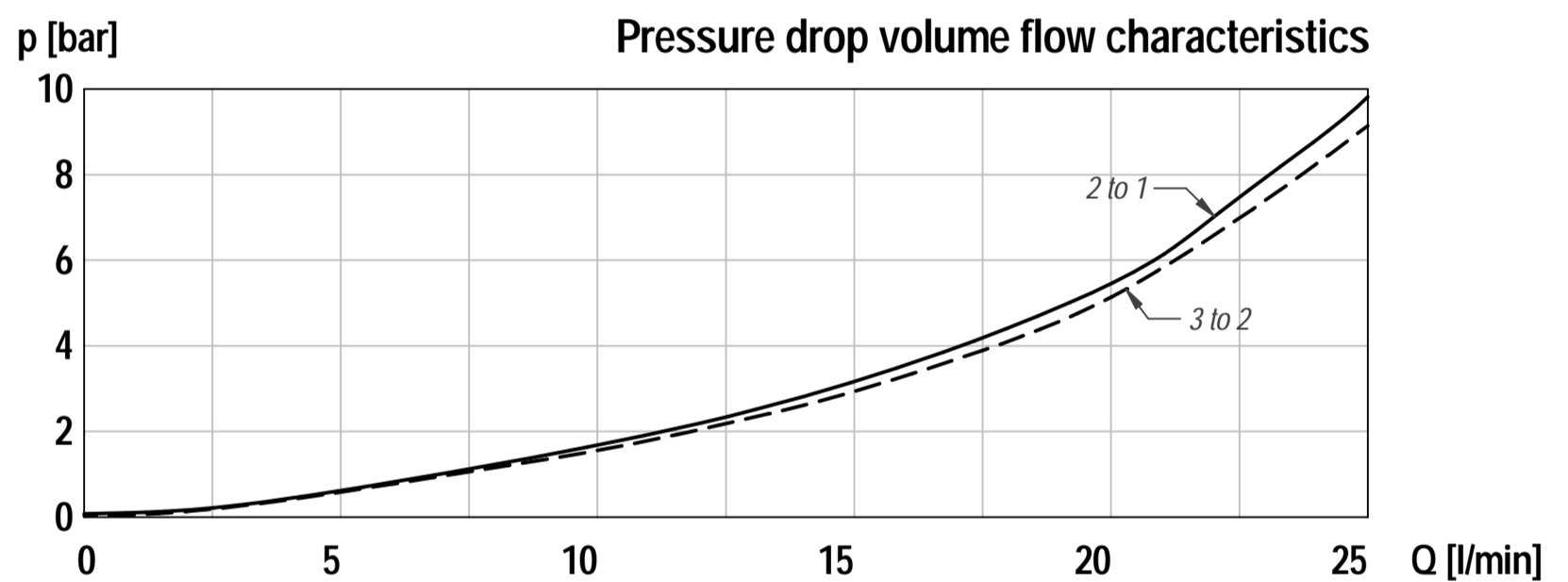
FEATURES

The continuous duty rated coil ensures reliable and efficient performance over extended periods of operation. Its hardened seat is designed to enhance durability, promoting a long lifespan and minimizing leakage. Additionally, the valve offers the flexibility of optional coil voltages and terminations, allowing for customization based on specific requirements.

DIMENSIONS



CHARACTERISTICS. Figures Based on: Oil Temp = 40°C, Viscosity = 40 cSt



9

General Specifications

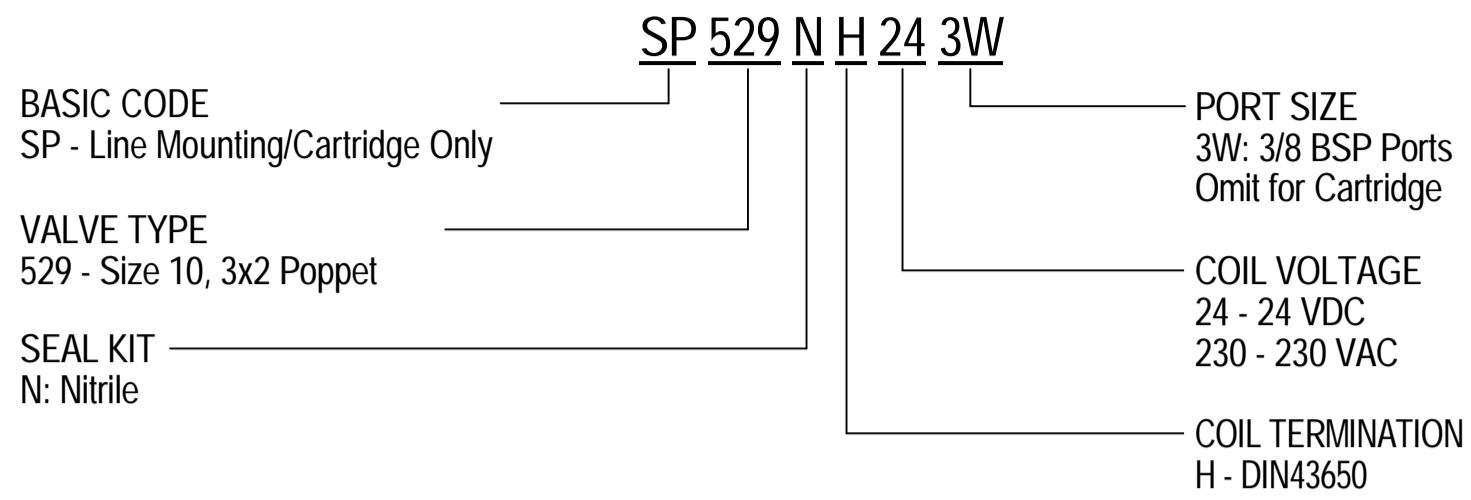
Description	3x2 poppet valve
Construction	Screw-in Cartridge Construction for Cavity
Mounting	7/8"-14 UNF screw thread for cartridge Threaded ports for housings.
Installation Position	any
Tightening Torque	60 Nm
Ambient Temp.	-40°C to +100°C
Cartridge Material	Working parts: Hardened, ground steel External surfaces: Zinc plated
Manifold Material	Aluminium or SG Iron
Cavity Number	SAE10-3
Weight	SP529: 0.31 kg

Hydraulic Specifications

Hydraulic Fluid	Mineral oils. Contact sales office for other fluids.
Max. Pressure	250 bar
Rated Flow	25 lpm
Max. Contamination Level	BS5540/4 Class 18/16/13 (25µ nominal)
Viscosity Range	5 to 500 cSt
Leakage Flow	Less than 0.3 ml/min (5 dpm)
Hydraulic Fluid Temp.	-20°C to +90°C (Standard Seals)
Mounting	Line
Peak Pressure	350 bar
Max. Flow	60 lpm
Seal Kit Number	Contact Sales Office

3X2 Poppet Valve

ORDERING CODE



DIMENSIONS

BASIC CODE: SP529 NH 3W

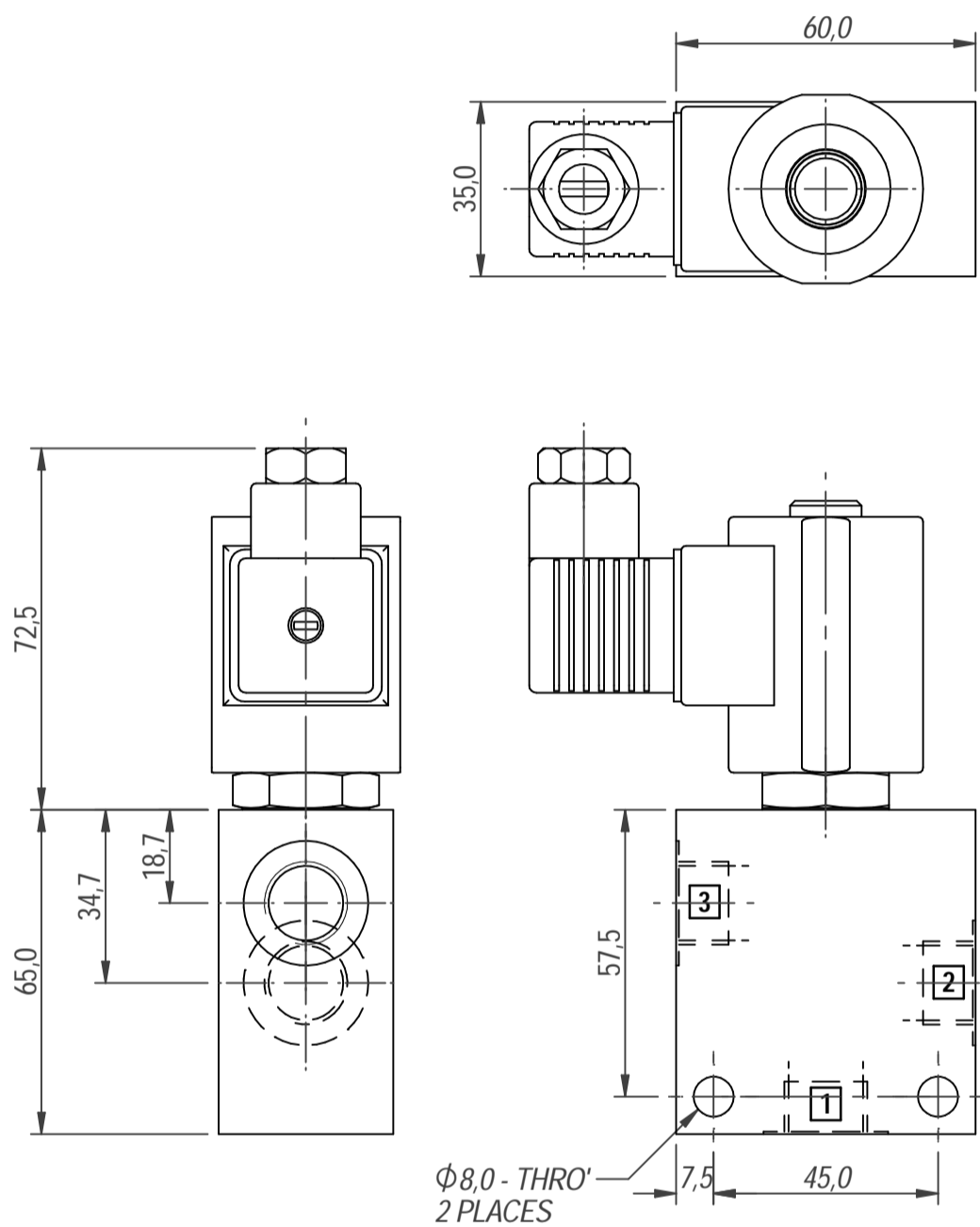
ONLY Body Part Numbers

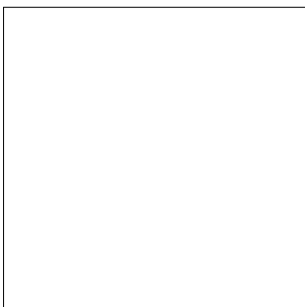
Aluminium

3/8" BSPP - Z10050

SG Iron

3/8" BSPP - Z10050S





FLUID POWER SYMBOL

