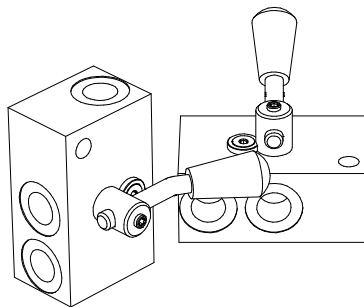
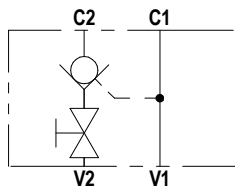




PCS

Pilot Check Valve with Shut-Off

FLUID POWER SYMBOL



APPLICATION

Pilot check valves allow flow to pass in one direction, with a low pressure drop, and then prevent reverse flow until pilot pressure is applied. The most common applications for these valves are in stabilizer cylinders where the stabilizers need to be lowered manually.

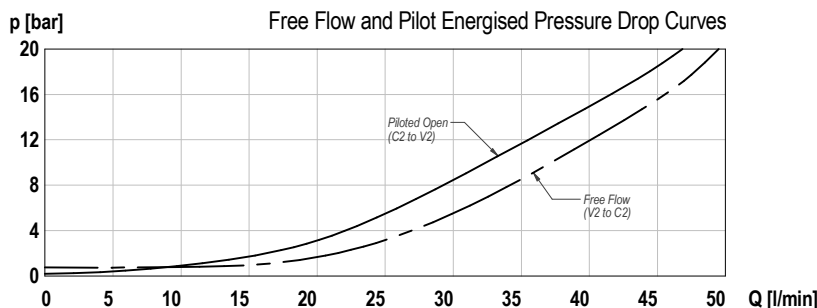
OPERATION

The valve allows free flow from V2 to C2. Flow in the reverse direction is locked by the check valve until the pilot line has pressure. An additional shut-off valve is also present in line to close the flow of oil manually if needed. The valve is suitable only to hold a load and not to control the load while lowering.

FEATURES

Hardened and ground poppet gives excellent flow capability for valve size, positive sealing and long working life. Smooth movement of shut off enables locking and unlocking, even at high pressures.

CHARACTERISTICS. Figures Based on: Oil Temp = 40°C, Viscosity = 40 cSt



General Specifications

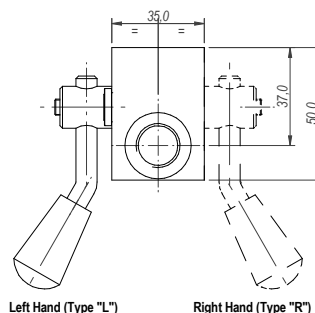
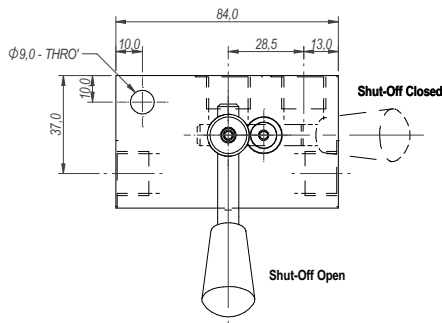
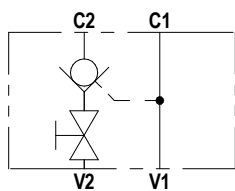
| | |
|-----------------------|---|
| Description | pilot check valve, manual shut-off |
| struction | parts-in-body construction |
| Mounting | BSP threaded ports |
| Installation Position | any |
| Tightening Torque | not applicable |
| Ambient Temp. | -20°C to +50°C |
| Construction Material | Working parts: Hardened, ground steel External surfaces: Zinc plated |
| Cavity Number | Not applicable |
| Weight | see chart |

Hydraulic Specifications

| | |
|--------------------------|--|
| Hydraulic Fluid | Mineral oils. Contact sales office for other fluids. |
| Max. Pressure | 350 bar |
| Rated Flow | 40 lpm |
| Max. Contamination Level | BS5540/4 Class 18/16/13 (25µ nominal) |
| Viscosity Range | 5 to 500 cSt |
| Leakage Flow | Less than 0.3 ml/min (5 dpm) |
| Hydraulic Fluid Temp. | -20°C to +90°C (Standard Seals) |
| Mounting | Line |
| Peak Pressure | 350 bar |
| Max. Flow | 50 lpm |

DIMENSIONS

BASIC CODE: PCS * 3W N



ORDERING CODE

| | |
|--|---------------------------------|
| PCS L 3W N | |
| BASIC CODE PCS - Pilot Check with Shut Off | SEAL KIT N: Nitrile |
| ALIGNMENT R: Right Hand Handle L: Left Hand Handle | PORT SIZE 3W: 3/8" BSP Ports |

Blank Page