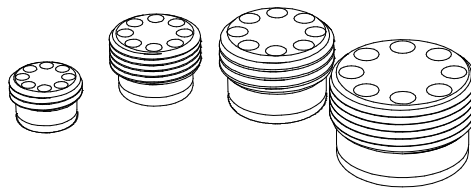
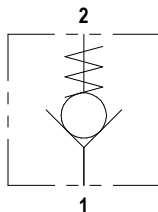




## ICV2

### FLUID POWER SYMBOL



### APPLICATION

Check valves allow flow to pass in one direction, with a low pressure drop, and prevent flow in the reverse direction. These insertable check valves give control over flows in a hydraulic circuit. Commonly used for low profile, space saving applications, the ICV2 series comes in a variety of BSP thread sizes. The cartridge seals on the 123 degree angle of the drilled hole.

### OPERATION

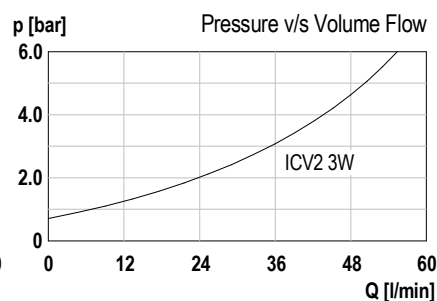
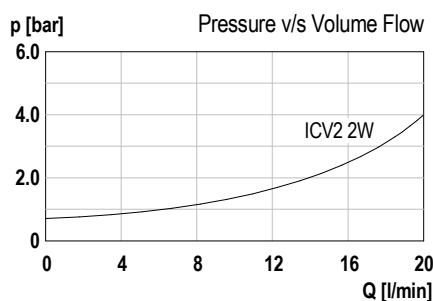
Pressure at the inlet port (Port 1) causes the ball to lift against the spring force, allowing flow to the outlet port (Port 2). Reverse flow is prevented by the ball reseating. It is important to note that the hydraulic flow follows in the opposite direction of screwing and is released in the opposite direction.

### FEATURES

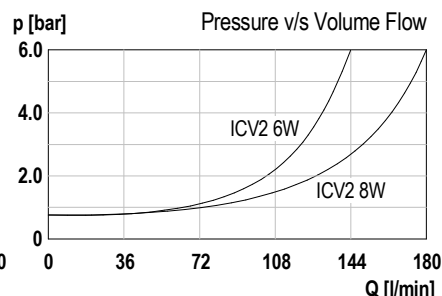
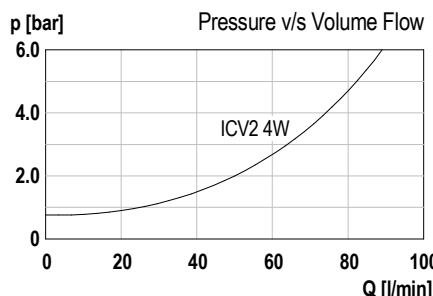
The compact design is the distinguishing feature of the ICV2 series. This valve utilizes a metal-to-metal sealing edge to ensure effective sealing. With its sturdy construction, spring-loaded mechanism, and ability to resist dirt, the check valve is highly durable. Furthermore, the valve seat, ball, and body are hardened to withstand wear and tear.

### DIMENSIONS

### CHARACTERISTICS. Figures Based on: Oil Temp = 40°C, Viscosity = 40 cSt



See chart



### General Specifications

Description	ball type check valve
Construction	insertable cartridge
Mounting	threaded ports
Installation Position	any
Ambient Temp.	-20°C to +50°C
Cartridge Material	Working parts: Hardened, ground steel External surfaces: Zinc plated
Manifold Material	SG Iron/Steel Construction
Weight	ICV2 2W: 0.08 kg ICV2 3W: 0.08 kg ICV2 4W: 0.08 kg ICV2 6W: 0.08 kg ICV2 8W: 0.08 kg

### Hydraulic Specifications

Hydraulic Fluid	Mineral oils. Contact sales office for other fluids.
Max. Pressure	350 bar
Rated Flow	See Chart
Max. Contamination Level	BS540/4 Class 18/16/13 (25µ nominal)
Viscosity Range	5 to 500 cSt
Leakage Flow	Less than 0.3 ml/min (5 dpm)
Hydraulic Fluid Temp.	-20°C to +90°C (Standard Seals)
Mounting	threaded
Peak Pressure	400 bar
Max. Flow	See Chart

## Insert Check Valve

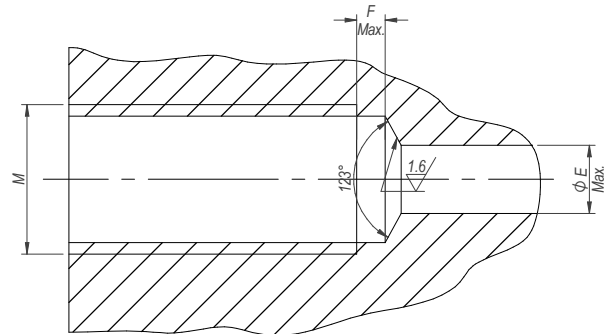
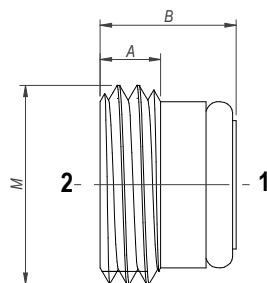
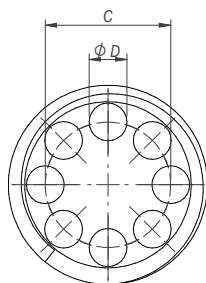
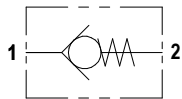
### ORDERING CODE

BASIC CODE		ICV2 2W 1 N	SEAL KIT
ICV2 - Insertable Type, ball			N: Nitrile
SIZE			CRACKING PRESSUE
2W - 1/4" BSP			1: 1,0 bar
3W - 3/8" BSP			
4W - 1/2" BSP			
6W - 3/4" BSP			
8W - 1" BSP			

### DIMENSIONS

BASIC CODE: ICV2 \*\* 1 N

ONLY Body Part Numbers  
Aluminium SG Iron



Model Code	M	Max Flow (lpm)	A	B	C	D	E	F	O-Ring	Torque (Nm)
ICV2 2W 1 N	G1/4	20	4,0	9,0	8,3	2,3	7,0	3,0	8 x 1,5	6
ICV2 3W 1 N	G3/8	50	7,0	12,0	10,8	3,0	9,0	3,0	10 x 1,8	6
ICV2 4W 1 N	G1/2	80	8,0	14,7	14,2	3,8	12,0	4,5	14 x 1,8	10
ICV2 6W 1 N	G3/4	140	10,0	17,5	18,5	4,6	16,0	6,5	20 x 2,0	12
ICV2 8W 1 N	G1	180	13,5	23,5	23,5	5,4	22,0	8,0	25 x 2,5	16