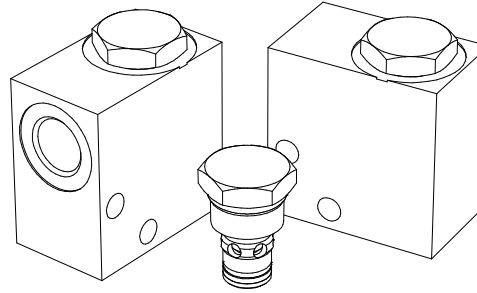
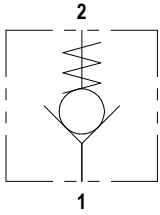




CVX 08

FLUID POWER SYMBOL



5

APPLICATION

These cartridge type check valves allow unidirectional flow at a low pressure drop. They fit into machined cavities and are therefore perfect for installation into custom made hydraulic circuits, manifold blocks or other hydraulic equipment for load sense or low flow applications.

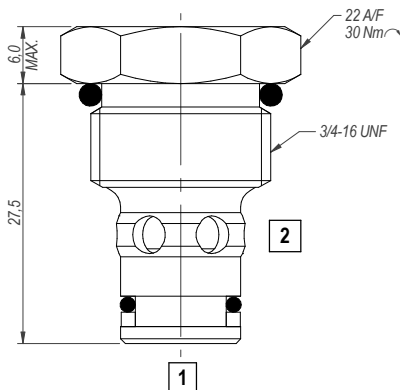
OPERATION

When the inlet pressure acts on the poppet via Port 1, the flow is allowed from Port 1 to Port 2 against the cracking pressure of the specified spring. Reverse flow is prevented by the reseating of the poppet onto its seat.

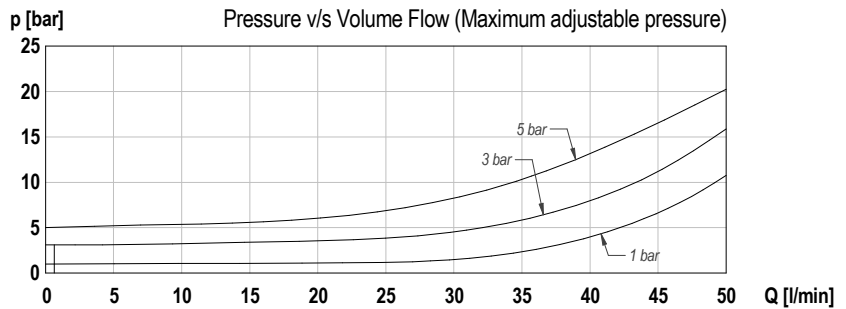
FEATURES

Hardened and ground poppets and high-quality balls along with machined and hardened seats give excellent flow reseal characteristics with zero leakage and extend service life. Installation is quick and easy due to the simplicity of the cavities.

DIMENSIONS



CHARACTERISTICS. Figures Based on: Oil Temp = 40°C, Viscosity = 40 cSt



General Specifications

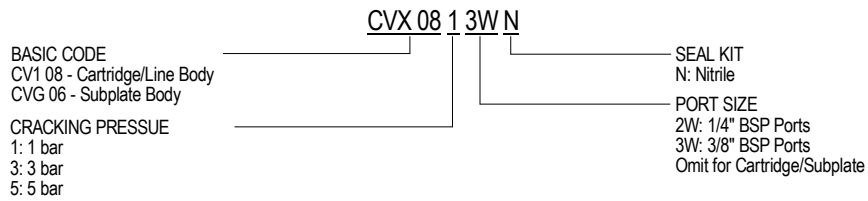
Description	poppet type check valve
Construction	Screw-in Cartridge Construction for Cavity
Mounting	3/4" - 16 UNF screw thread for cartridge Threaded ports for housings.
Installation Position	any
Tightening Torque	30 Nm
Ambient Temp.	-40°C to 70°C
Cartridge Material	Working parts: Hardened, ground steel External surfaces: Zinc plated
Manifold Material	Aluminium or SG Iron
Cavity Number	SAE08-2 (Refer Cavities Section)
Weight	CVX 08 **: 0.05 kg CVX 08 * 2W **: 0.21 kg CVX 08 * 3W **: 0.21 kg

Hydraulic Specifications

Hydraulic Fluid	Mineral oils. Contact sales office for other fluids.
Max. Pressure	350 bar
Rated Flow	40 lpm
Max. Contamination Level	BS5540/4 Class 18/16/13 (25µ nominal)
Viscosity Range	5 to 500 cSt
Leakage Flow	Less than 0.3 ml/min (5 dpm)
Hydraulic Fluid Temp.	-30°C to +90°C (Standard Seals)
Mounting	Line/Subplate
Peak Pressure	400 bar
Max. Flow	60 lpm
Seal Kit Number	SKCV108 (Nitrile)

Poppet Type Check Valve

ORDERING CODE

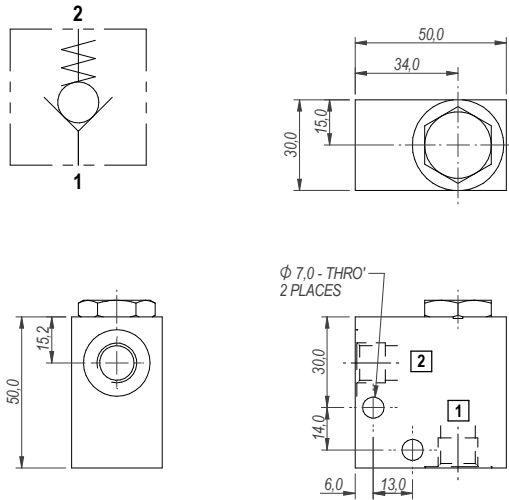


DIMENSIONS

BASIC CODE: CVX 08 * 2W **

ONLY Body Part Numbers

Aluminium SG Iron
1/4" BSPP - Z10216 1/4" BSPP - Z10216S



DIMENSIONS

BASIC CODE: CVX 08 * 3W **

ONLY Body Part Numbers

Aluminium SG Iron
3/8" BSPP - Z10280 3/8" BSPP - Z10280S

