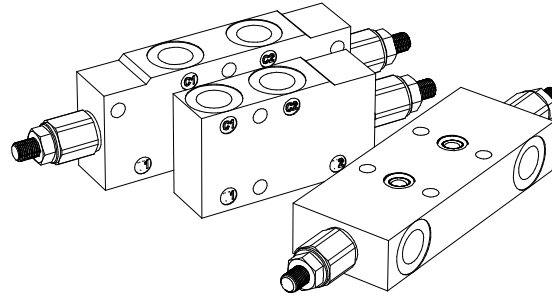
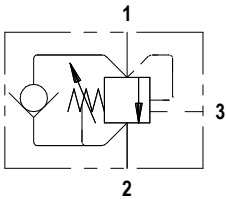




**FLUID POWER SYMBOL**



4

**APPLICATION**

Overcentre valves give static and dynamic control of loads by regulating flow into and out of hydraulic actuators. The Overcentre valve will stop the load from running away in the event of a hose burst. If open center directional control valves are used, they will allow the thermal expansion relief of the hydraulic fluid. These valves provide excellent hose burst protection.

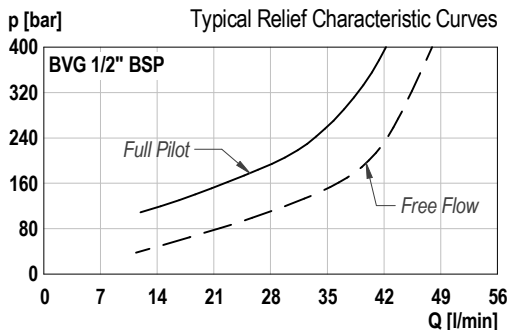
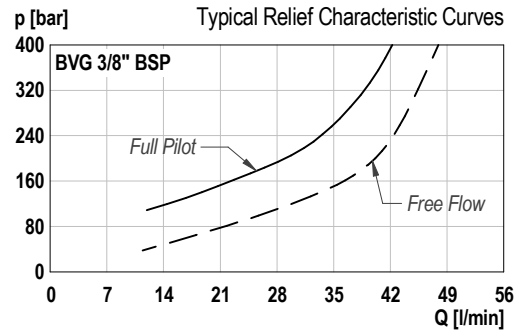
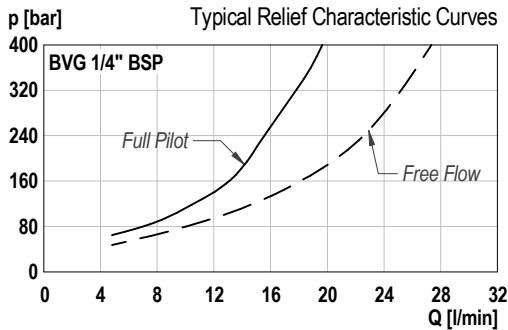
**OPERATION**

The check section of the valve allows free flow into the actuator and then holds and locks the load against movement. Pressure in the pilot port will give a controlled movement to the cylinder when the pressure required to open the valve and allow movement depends on the pilot ratio of the valve.

**FEATURES**

Matched ground and hardened working parts give a long and trouble-free life. Consistent stable operation providing low pressure over ride even with increasing flows.

**CHARACTERISTICS. Figures Based on: Oil Temp = 40°C, Viscosity = 40 cSt**



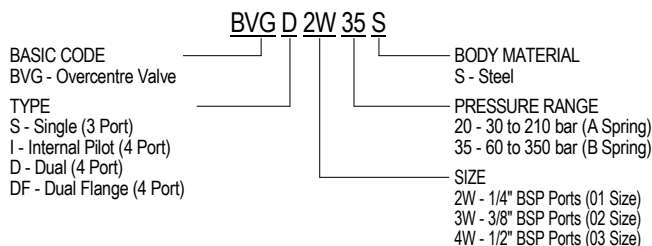
**General Specifications**

|                       |   |
|-----------------------|---|
| Description           | direct acting overcentre valve  |
| Construction          | parts in body construction  |
| Mounting              | blind holes for mounting bolts  |
| Installation Position | any   |
| Ambient Temp.         | -20°C to +50°C  |
| Cartridge Material    | Working parts: Hardened, ground steel<br>External surfaces: Zinc plated |
| Manifold Material     | Steel   |
| Cavity Number         | Not applicable  |
| Weight                | see chart   |

**Hydraulic Specifications**

|                          |  |
|--------------------------|--|
| Hydraulic Fluid          | Mineral oils. Contact sales office for other fluids. |
| Max. Pressure            | 350 bar  |
| Rated Flow               | see chart  |
| Max. Contamination Level | BS5540/4 Class 18/16/13 (25µ nominal)                |
| Viscosity Range          | 5 to 500 cSt   |
| Leakage Flow             | Less than 0.6 ml/min (10 dpm)                        |
| Hydraulic Fluid Temp.    | -20°C to +90°C (Standard Seals)                      |
| Mounting                 | Line   |
| Peak Pressure            | 400 bar  |
| Max. Flow                | see chart  |

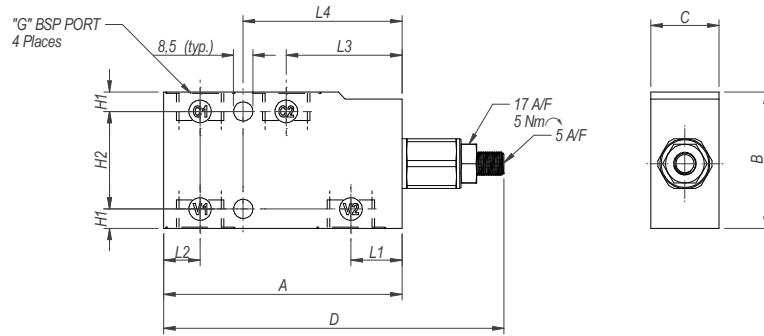
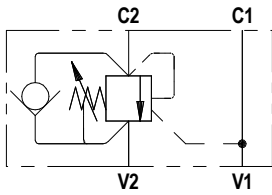
**ORDERING CODE**



# Overcentre Valve

## DIMENSIONS

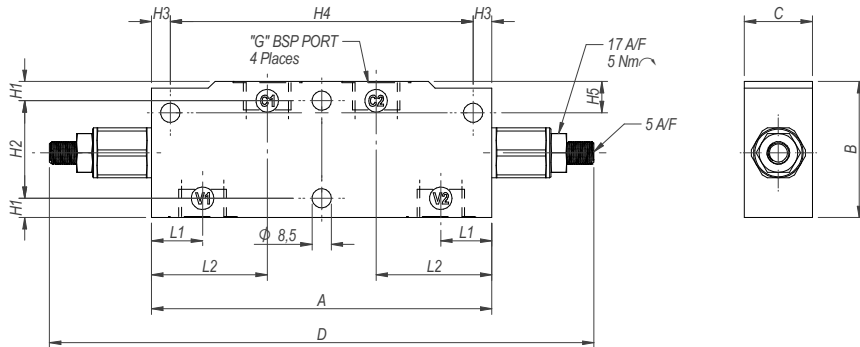
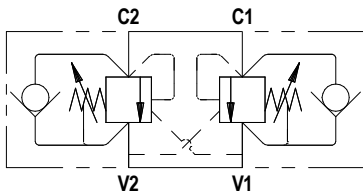
### BASIC CODE: BVG I



| Model Code    | G        | Max Flow (lpm) | A   | B  | C  | D     | L1   | L2 | L3 | L4   | H1  | H2 |
|---------------|----------|----------------|-----|----|----|-------|------|----|----|------|-----|----|
| BVG I 2W ** S | 1/4" BSP | 30 lpm         | 95  | 50 | 25 | 133   | 22.5 | 14 | 51 | 66   | 5.5 | 39 |
| BVG I 3W ** S | 3/8" BSP | 40 lpm         | 95  | 50 | 25 | 133   | 22.5 | 14 | 51 | 66   | 5.5 | 39 |
| BVG I 4W ** S | 1/2" BSP | 60 lpm         | 105 | 60 | 30 | 151.5 | 22.5 | 16 | 51 | 67.5 | 8.5 | 43 |

## DIMENSIONS

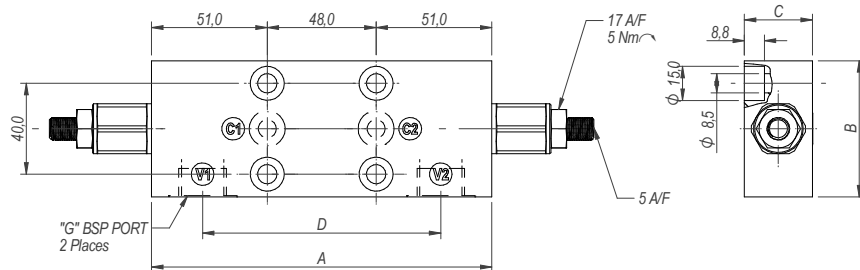
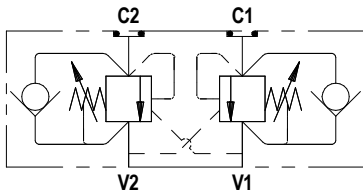
### BASIC CODE: BVG D



| Model Code    | G        | Max Flow (lpm) | A   | B  | C  | D   | L1   | L2 | H1  | H2 | H3   | H4    | H5   |
|---------------|----------|----------------|-----|----|----|-----|------|----|-----|----|------|-------|------|
| BVG D 2W ** S | 1/4" BSP | 30 lpm         | 150 | 50 | 25 | 225 | 22.5 | 51 | 5.5 | 39 | 8.25 | 133.5 | 9.5  |
| BVG D 3W ** S | 3/8" BSP | 40 lpm         | 150 | 50 | 25 | 225 | 22.5 | 51 | 5.5 | 39 | 8.25 | 133.5 | 9.5  |
| BVG D 4W ** S | 1/2" BSP | 60 lpm         | 150 | 60 | 30 | 225 | 22.5 | 51 | 8.5 | 43 | 8.25 | 133.5 | 13.8 |

## DIMENSIONS

### BASIC CODE: BVG DF



| Model Code     | G        | Max Flow (lpm) | A   | B  | C  | D   |
|----------------|----------|----------------|-----|----|----|-----|
| BVG DF 3W ** S | 3/8" BSP | 40 lpm         | 150 | 60 | 30 | 105 |
| BVG DF 4W ** S | 1/2" BSP | 60 lpm         | 150 | 60 | 30 | 105 |