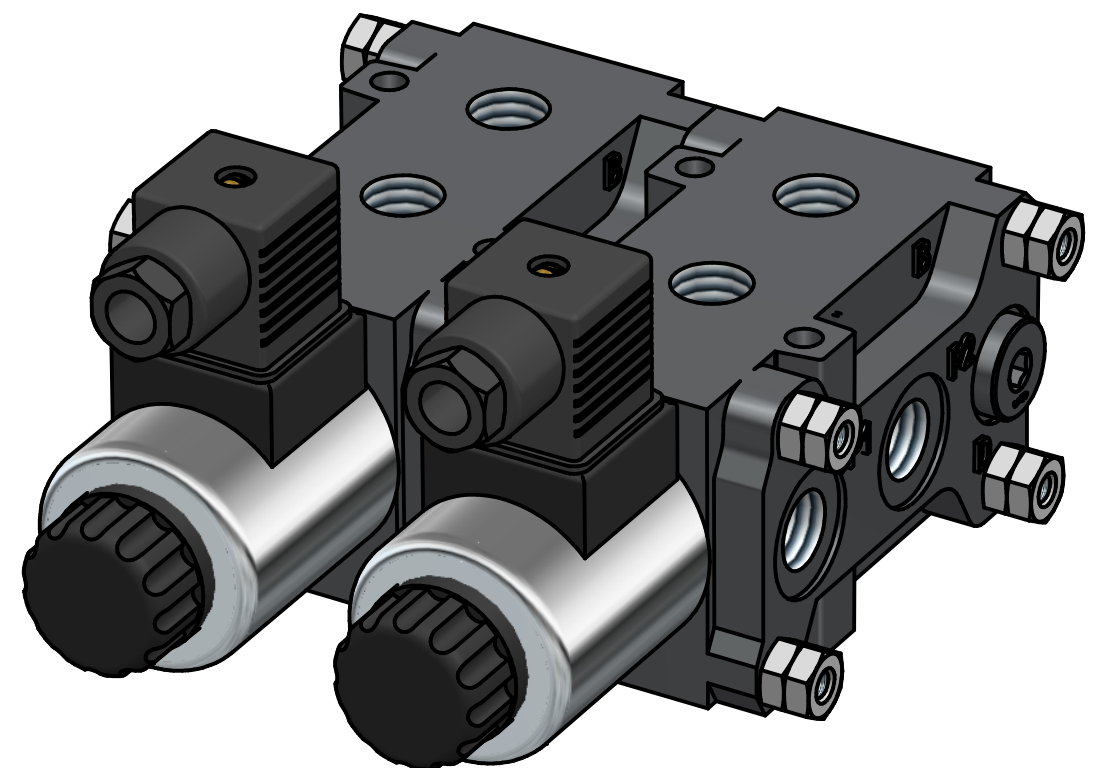
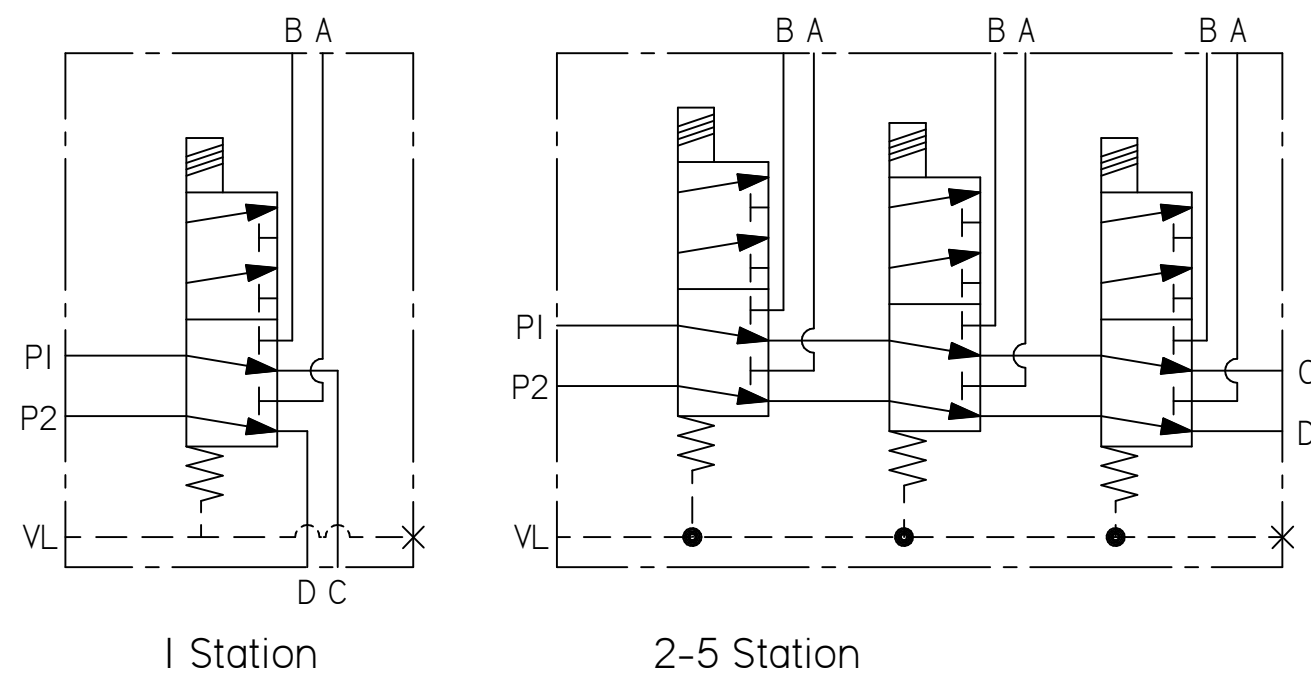


MOP6

FLOW DIVERTER VALVES

FLUID POWER SYMBOL



Application

The stackable circuit selector valve MOP6 can allow one single drive to control 6 users with 5 elements connected in series. High performance solenoids they don't need the external drainage. These valves can manage high hydraulic power with a minimal pressure drop.

To Order

BASIC CODE
MOP6 - Size 6, Diverter Valve

VALVE SIZE
6: NG06

OPERATING STATIONS
I-5: Number of stations

MOP 6 3 3W E G24

VOLTAGE
G12 - 12 Volt D.C.
G24 - 24 Volt D.C.

DRAIN TYPE
E - Extrenally Drained

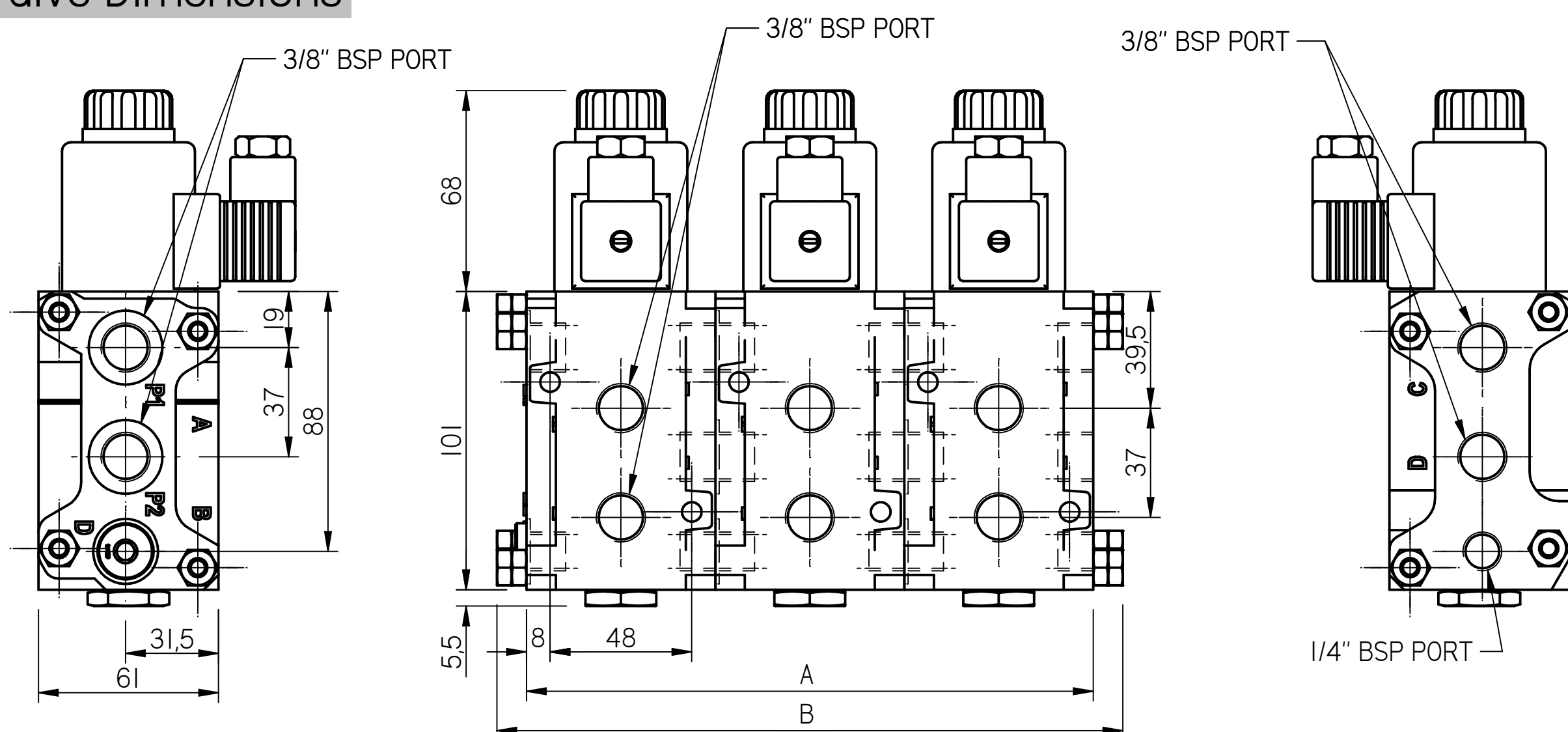
PORT SIZE
3W - 3/8" BSP Ports

Hydraulic Specifications

Figures based on: Oil Temp = 40°C Viscosity = 40 cSt

Max Flow	50 l/min
Max Pressure	250 bar
Mounting Position	Any direction
Body Material	Cast Iron
Weight	See Chart
Filtration	BS5540/4 Class I8/I3 (25µ nominal)
Operating Temp	-20°C to +80°C
Viscosity Range	5 to 500 cSt

Valve Dimensions



Dim.	1	2	3	4
A	64	128	192	256
B	86	138	214	278

Where measurements are critical request certified drawings. We reserve the right to change specifications without notice.