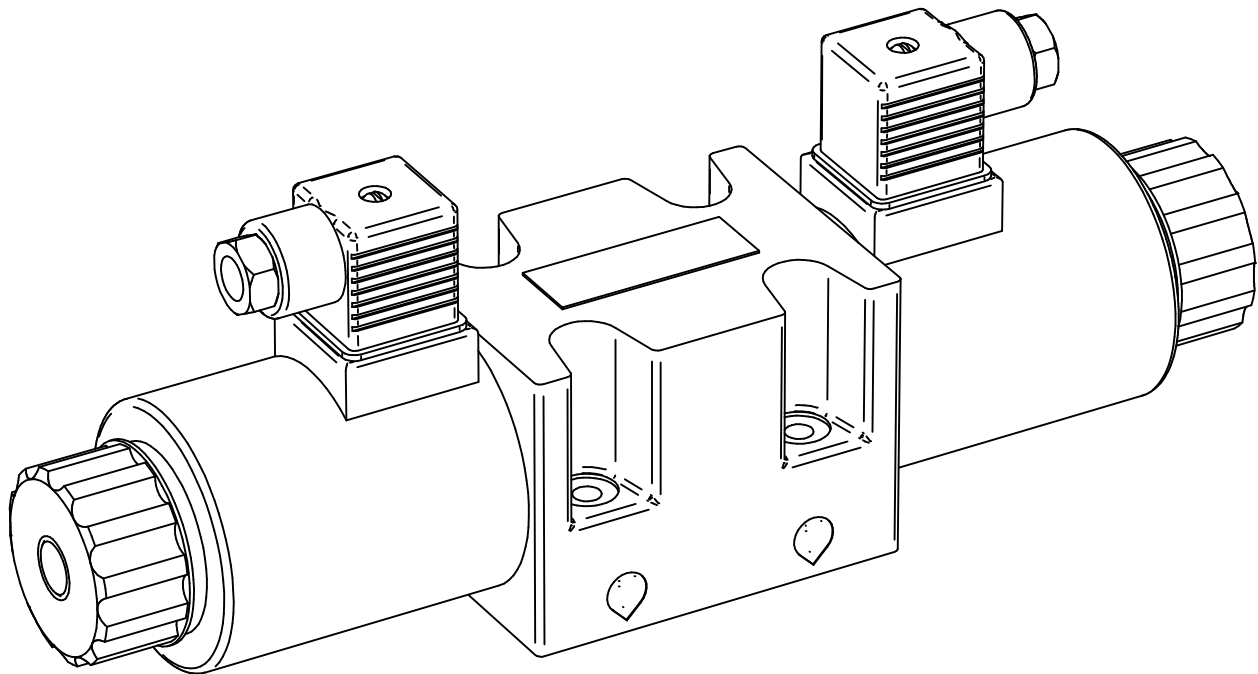


FLUID POWER SYMBOL



5

APPLICATION

Solenoid operated directional control valves are mainly used for changing direction of movement hydraulic actuators. Depending on the various spool types and their position, various kinds of movement can be effected in a hydraulic circuits. These valves are most common for industrial systems such as machine tools, hydraulic presses and SPMs but are also used in mobile hydraulic systems.

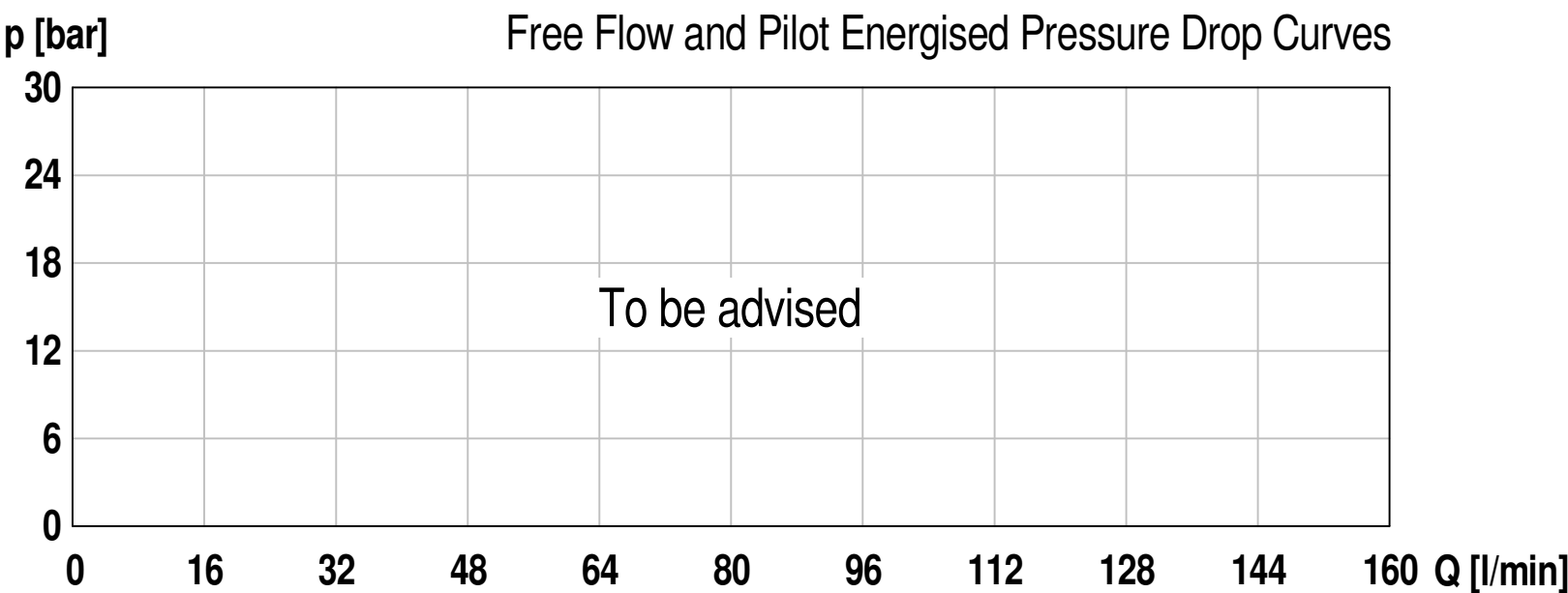
OPERATION

4/2-way spool valve, detented:
2 solenoids and 2 spool positions. With the solenoids deenergised the spool remains in the last switched position.
4/2-way spool valve, spring offset:
1 solenoid and 2 spool positions. With the solenoid deenergised the spool returns to the offset position.
4/3-way spool valve, spring centered:
2 solenoids and 3 spool positions. With the solenoids deenergised the spool returns to the center position..

FEATURES

Low leakage and long product life due to precise fitment of spools. The spools are made from heat treated steel with a cast body featuring an automotive paint coat for better appearance and protection from he elements. These are Direct operated solenoid valves with a 4 port and 5 chamber design. They can be spool detented or with spring reset.

CHARACTERISTICS. Figures Based on: Oil Temp = 40°C, Viscosity = 40 cSt



Spool Symbol	Flow Direction			
	P→A	P→B	A→T	B→T
A, B				
C				
D, Y				
E				
F				
H				
J				
M				
G				

General Specifications

Description	4/2-, 4/3-spool valve
Construction	direct operated spool valve
Mounting	NG10 flange to ISO 4401-05
Installation Position	any
Tightening Torque	9,5 Nm, M6 x 4 nos
Ambient Temp.	-20°C to +50°C
Construction Material	Working parts: Hardened, ground steel External surfaces: Zinc plated
Cavity Number	Not applicable
Weight	2 solenoid version: 5.40 kg 1 solenoid version: 3.90 kg

Hydraulic Specifications

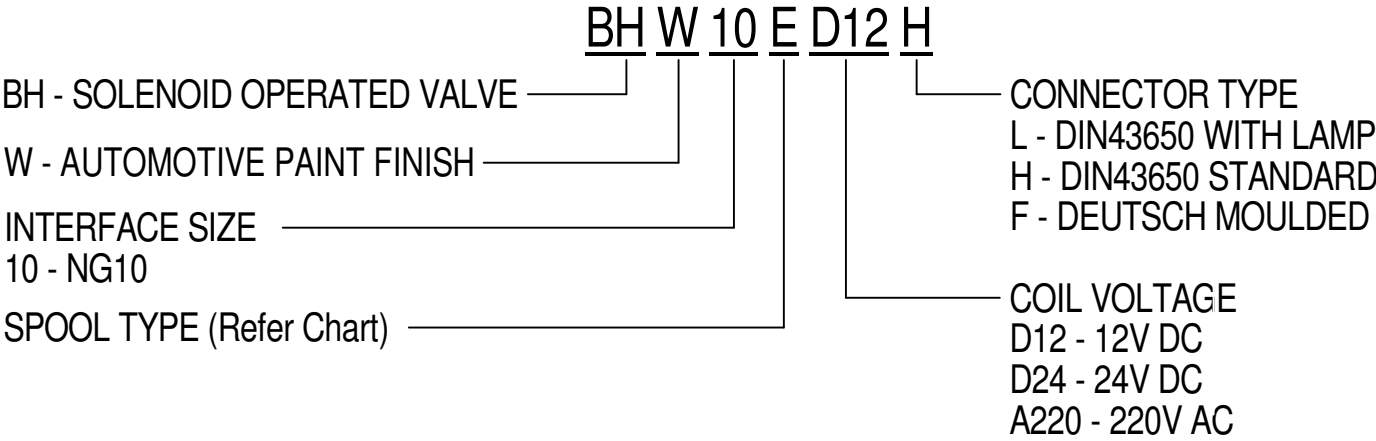
Hydraulic Fluid	Mineral oils. Contact sales office for other fluids.
Max. Operating Pressure	350 bar
Max. Tank Pressure	160 bar
Rated Flow	see chart
Max. Contamination Level	BS5540/4 Class 18/16/13 (25µ nominal)
Viscosity Range	5 to 500 cSt
Leakage Volume Flow	on request
Hydraulic Fluid Temp.	-20°C to +90°C (Standard Seals)
Mounting	Line
Peak Pressure	350 bar
Max. Flow	120 lpm
Seal Kit Number	see chart

Electrical Specifications

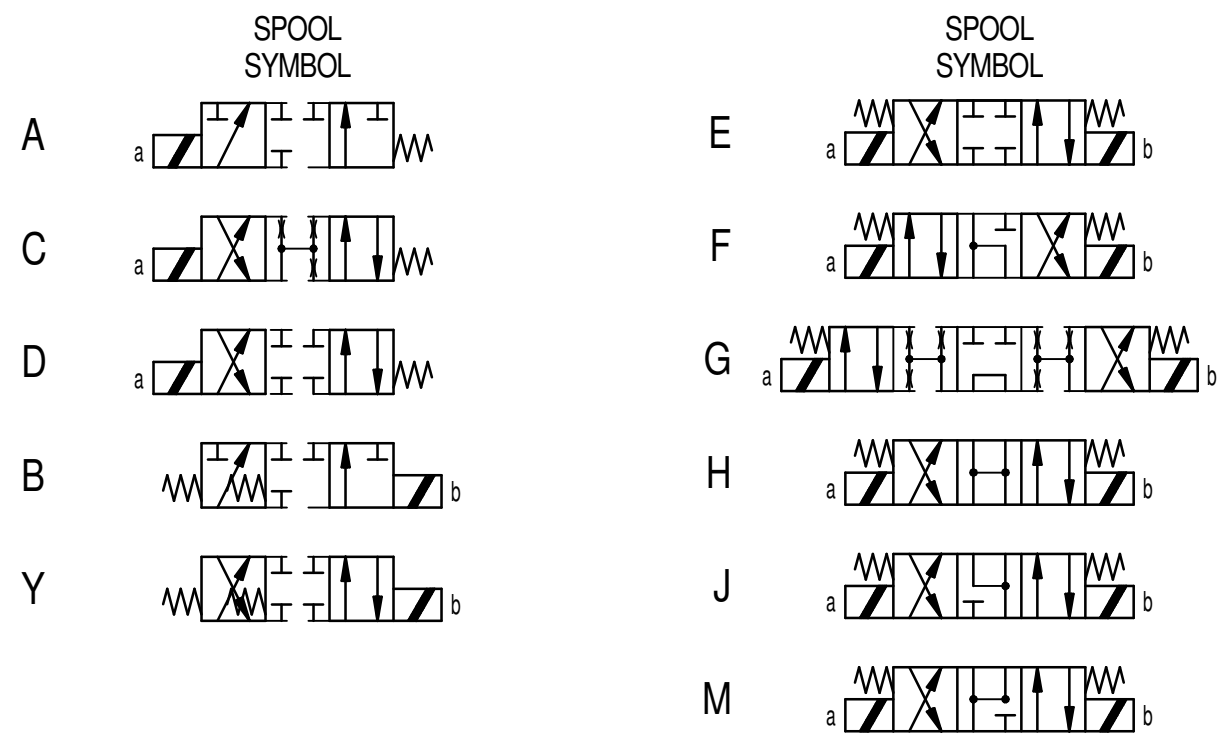
Construction	solenoid, wet pin push type, pressure tight
Voltage tolerance	± 10 % of nominal voltage
Protection class	IP 65 to EN 60 529
Switching cycles	15 000/h
Operating life	10 ⁶ (number of switching cycles, theoretically)
Connection / Power supply	Over device plug connection to ISO 4400 / DIN 43650, (2P+E), other connections on request.

Solenoid Operated Spool Valve

ORDERING CODE

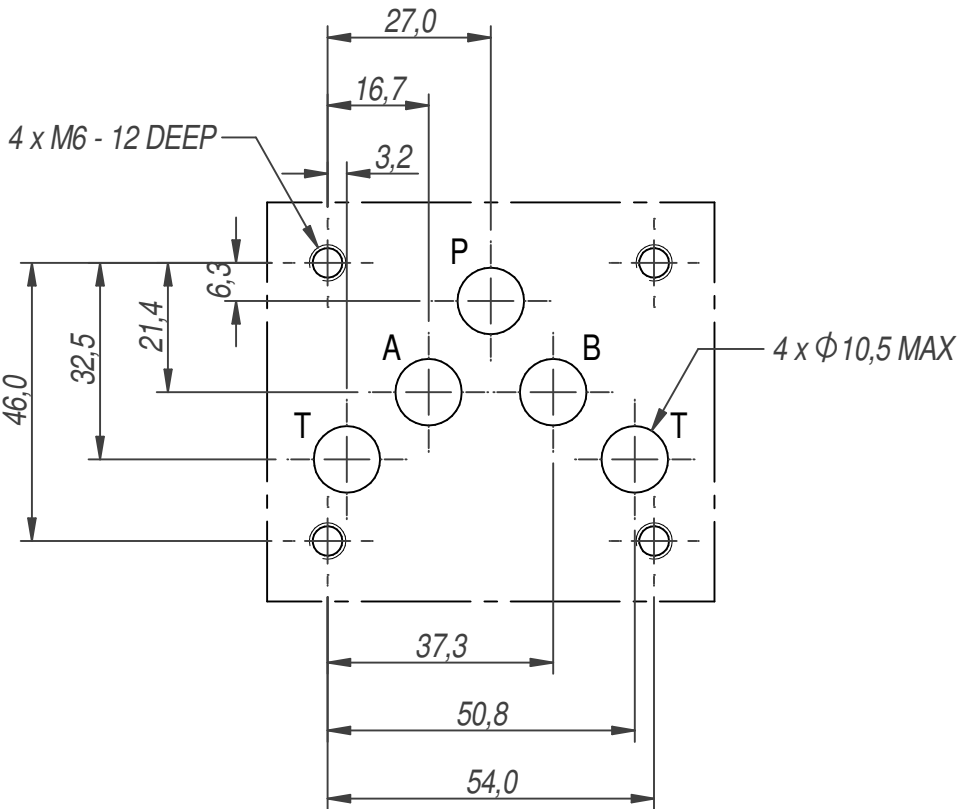


SPOOL TYPES



INTERFACE

As per ISO 4401/7790 for NG10



DIMENSIONS

