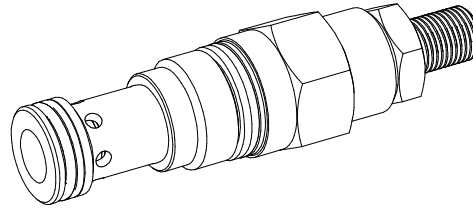
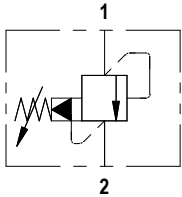




1

FLUID POWER SYMBOL



APPLICATION

Pilot Operated Relief Valves are applicable more in systems where pressure regulation is needed over pressure safety. The barrel-piston assembly of the valve implies that the valve is not a zero-leak valve. The valve is ideal for continuous duty providing accurate control with constant or varying flows.

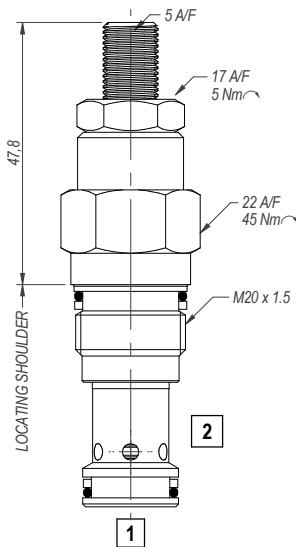
OPERATION

When the inlet pressure at Port 1 (Pressure) exceeds the setting of the valve, the pilot section opens. This creates an internal pressure drop which causes the main section to open allowing relief flow to Port 2 (Tank)

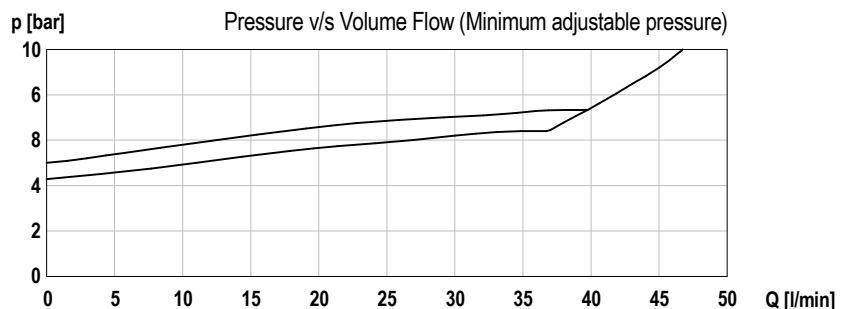
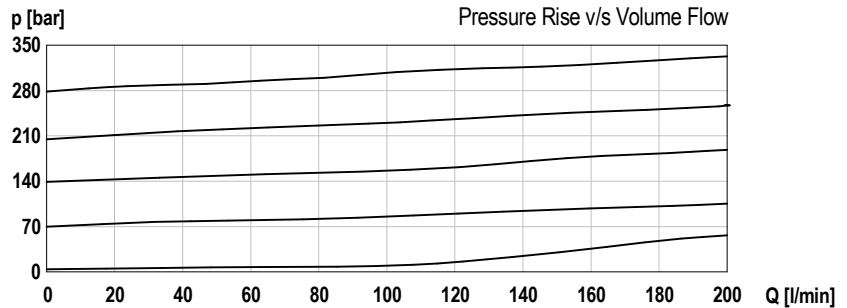
FEATURES

Extremely low pressure-rise for any increase in flow giving accurate pressure control. Smooth operation due to presence of a balanced piston. Hardened working parts ensure a long, reliable, trouble-free life. Cartridge construction gives maximum flexibility in mounting

DIMENSIONS



CHARACTERISTICS. Figures Based on: Oil Temp = 40°C, Viscosity = 40 cSt



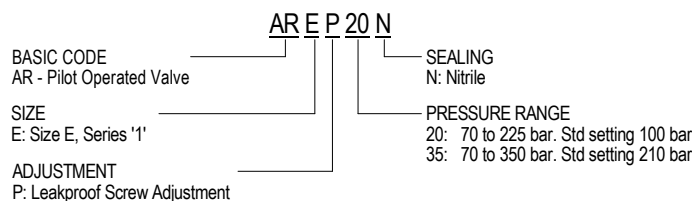
General Specifications

Description	pilot operated relief valve
Construction	Screw-in Cartridge Construction for Cavity
Mounting	M20 x 1.5 screw thread for cartridge Threaded ports for housings.
Installation Position	any
Tightening Torque	45 Nm
Ambient Temp.	-20°C to +50°C
Cartridge Material	Working parts: Hardened, ground steel External surfaces: Zinc plated
Manifold Material	Not available
Cavity Number	Sun T-10A
Weight	AR E P 20 N Cart: 0.14 kg

Hydraulic Specifications

Hydraulic Fluid	Mineral oils. Contact sales office for other fluids.
Max. Pressure	350 bar
Rated Flow	60 lpm
Max. Contamination Level	BS5540/4 Class 18/16/13 (25µ nominal)
Viscosity Range	5 to 500 cSt
Leakage Flow	30 ml/min (nominal)
Hydraulic Fluid Temp.	-20°C to +90°C (Standard Seals)
Mounting	Line/Subplate
Peak Pressure	400 bar
Max. Flow	100 lpm
Seal Kit Number	SKARE (Nitrile)

ORDERING CODE



Blank Page