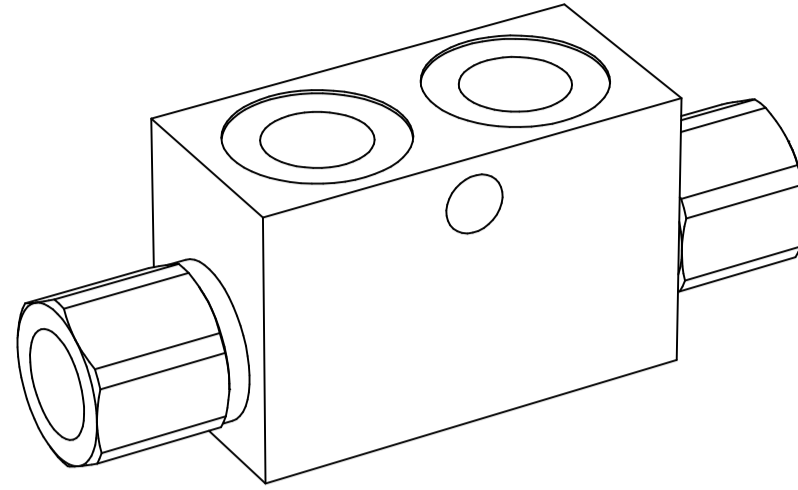
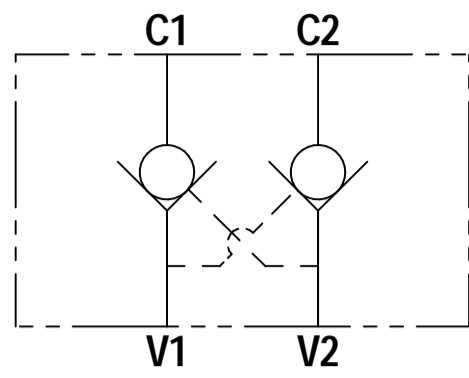




PC2 06

Pilot Check Valve - Cylinder Mounting

FLUID POWER SYMBOL



APPLICATION

Dual pilot check valves have two check valves that each allow flow to pass in one direction, with a low pressure drop, and then prevent reverse flow until pilot pressure is applied via the pressure port of the second check valve. These check valves give control over cylinders, holding and locking them in position until pilot pressure is applied.

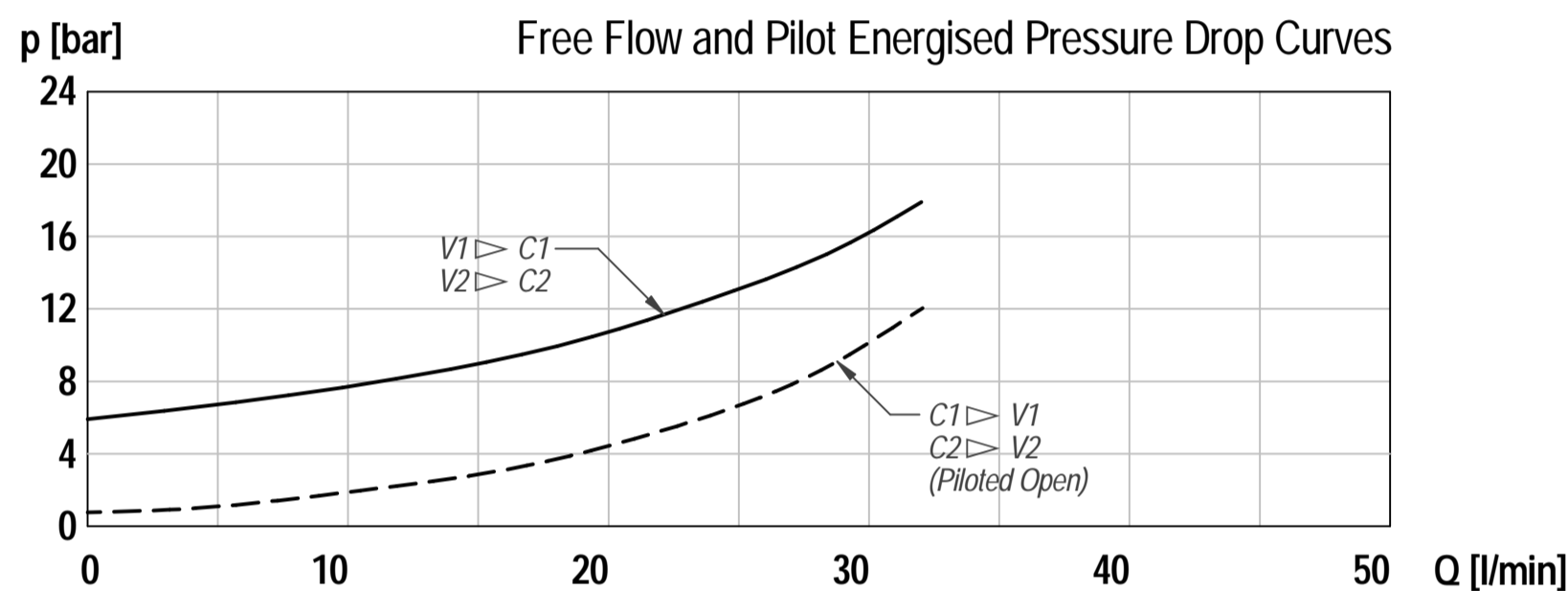
OPERATION

Pressure on the valve port (V1 or V2) causes the poppet to lift against the spring force, allowing flow to the cylinder port (C1 or C2) while providing a pilot for the second valve via the pusher. Reverse flow is prevented by the check reseating.

FEATURES

These valves use two check cartridges in a housing containing a pusher. The valve housings have 4 ports with mounting holes for immediate installation onto hydraulic systems. Moving parts are hardened and then match ground for a long service life.

CHARACTERISTICS. Figures Based on: Oil Temp = 40°C, Viscosity = 40 cSt



General Specifications

Description	dual pilot check valve
struction	parts-in-body construction for threaded ports
Mounting	BSP threaded ports
Installation Position	any
Tightening Torque	not applicable
Ambient Temp.	-20°C to +50°C
Construction Material	Working parts: Hardened, ground steel External surfaces: Zinc plated
Cavity Number	Not applicable
Weight	PC2 06 3W: 0.47 kg PC2 06 A 3W: 0.43 kg

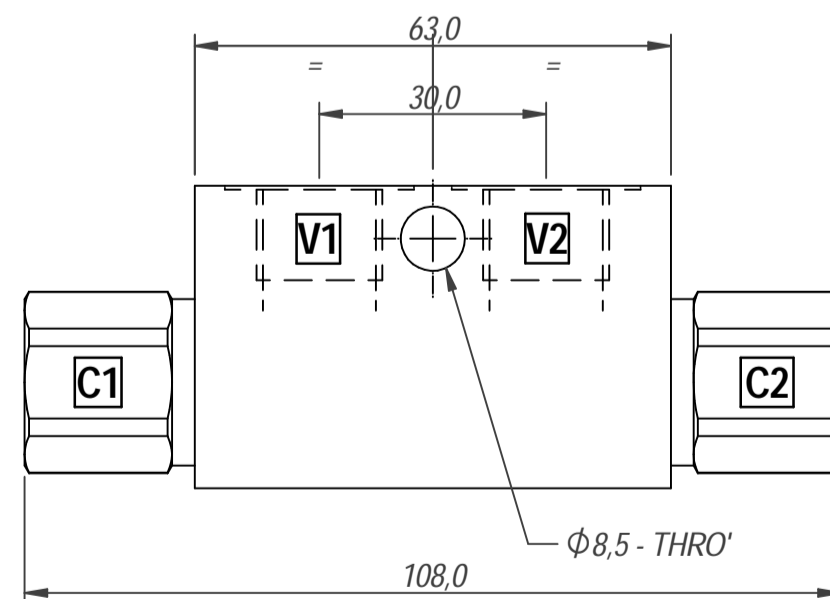
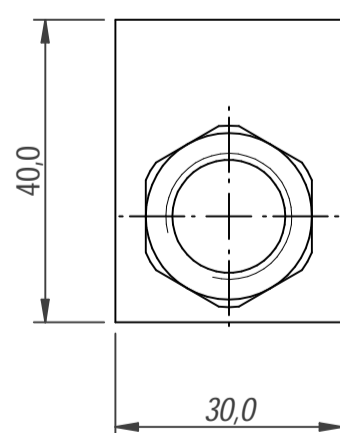
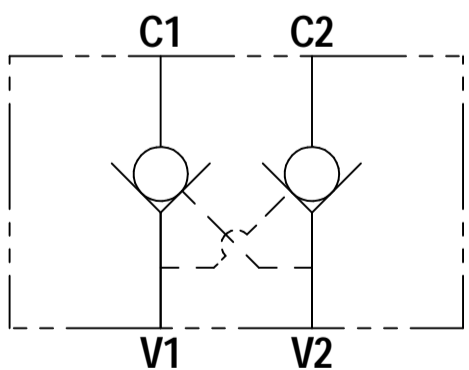
Hydraulic Specifications

Hydraulic Fluid	Mineral oils. Contact sales office for other fluids.
Max. Pressure	350 bar
Rated Flow	see chart
Max. Contamination Level	BS5540/4 Class 18/16/13 (25µ nominal)
Viscosity Range	5 to 500 cSt
Leakage Flow	Less than 0.3 ml/min (5 dpm)
Hydraulic Fluid Temp.	-20°C to +90°C (Standard Seals)
Mounting	Line
Peak Pressure	350 bar
Max. Flow	60 lpm
Seal Kit Number	see chart

DIMENSIONS

BASIC CODE: PC2 06 3W N

ONLY Body Part Numbers
Aluminium SG Iron



ORDERING CODE

PC2 06 A 3W N #H10

BASIC CODE
PC2 - Pilot Check Valve

Configuration
(blank): Dual Pilot Check
A: Pilot Check (on request only)

Seal Kit
N: Nitrile

PORT SIZE
3W: 3/8" BSP Ports

Blank Page