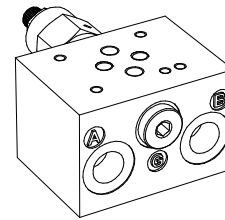
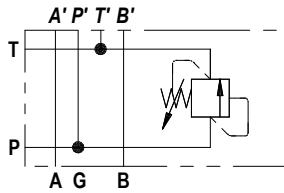




MBR03

Relief Subplate

FLUID POWER SYMBOL



APPLICATION

The MBR03 subplate is a CETOP3 manifold with an inbuilt relief valve to limit system pressure by directing flow from the P to T Port when pump pressure reaches the valve setting. It reduces the need for an additional relief valve when using CETOP3 modular stacking valve.

OPERATION

As with all relief valves, when the pressure exceeds the spring force, the poppet moves back, opening the Pressure Port (P) to the Tank Port (T). The threaded ports internally connect to the subplate interface for valve mounting.

FEATURES

CETOP3 interface provides sandwiched stacking for directional control valves and other modular valves. Mating surfaces are ground and ports with O-rings are spot faced. The valve pressure setting is adjustable by means of an adjusting knob and locknut.

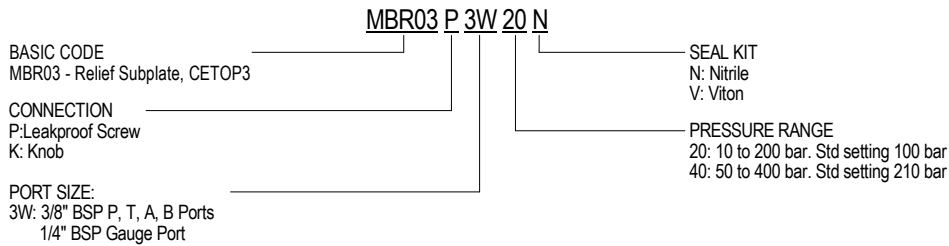
General Specifications

Description	single station relief subplate
Nominal Size	NG6 acc. To ISO 4401-03
Mounting	2 threaded holes for M5 on bottom face
Installation Position	any
Ambient Temp.	-20°C to +50°C
Manifold Material	SG Iron
Weight	MBR06 : 1.50 kg

Hydraulic Specifications

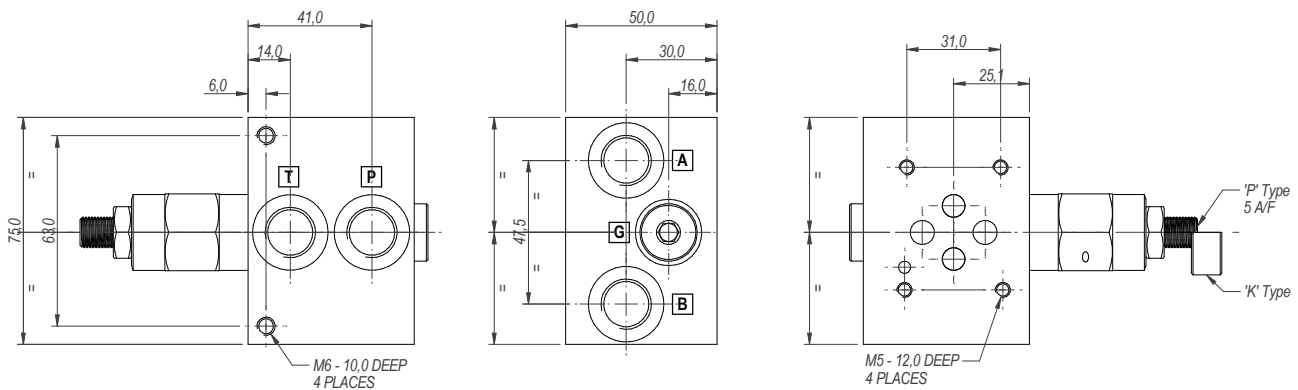
Hydraulic Fluid	Mineral oils. Contact sales office for other fluids.
Max. Pressure	350 bar
Rated Flow	40 lpm
Max. Contamination Level	BS5540/4 Class 18/16/13 (25µ nominal)
Viscosity Range	5 to 500 cSt
Leakage Flow	Less than 0.3 ml/min (5 dpm)
Hydraulic Fluid Temp.	-20°C to +90°C (Standard Seals)
Mounting	Line
Peak Pressure	400 bar
Max. Flow	60 lpm

ORDERING CODE



DIMENSIONS

BASIC CODE: MBR03



1