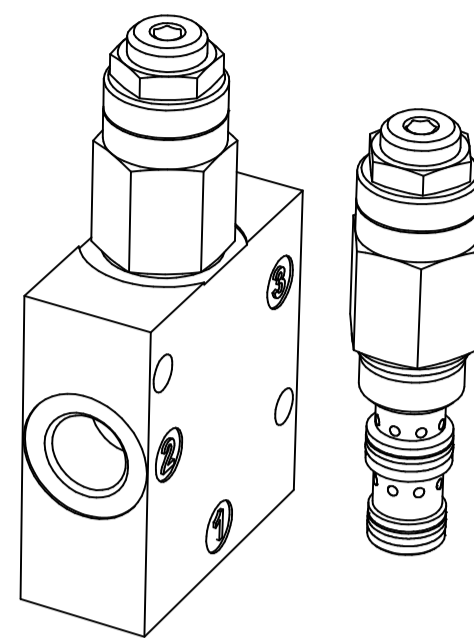
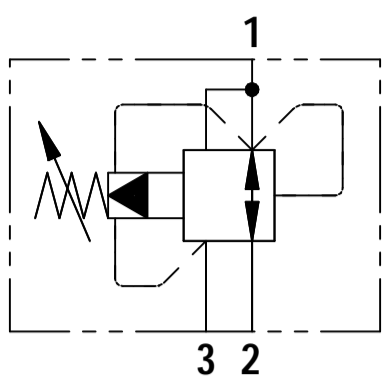




FLUID POWER SYMBOL



APPLICATION

Pressure reducing valves are normally open valves that are used to maintain constant downstream pressure lower than the inlet pressure. They are ideal for use in two actuator systems or to protect low pressure actuators such as brake cylinders or clamping cylinders.

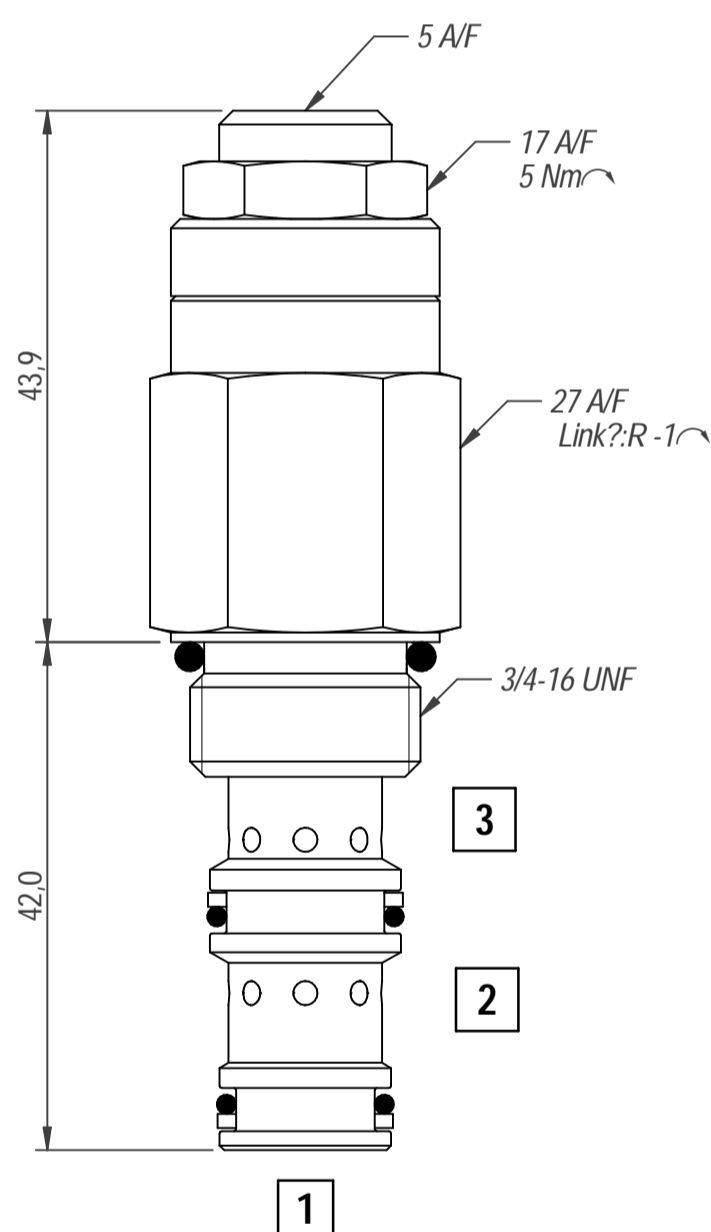
OPERATION

The valve being normally open, the oil from the Inlet Port (2) is connected to the pilot section by an orifice in the main spool. When the pressure rises, the pilot section opens to tank causing a pressure imbalance across the spool, pushing it back and throttling or closing the ring of radial holes at the Inlet to maintain constant pressure in the Regulated Port (1).

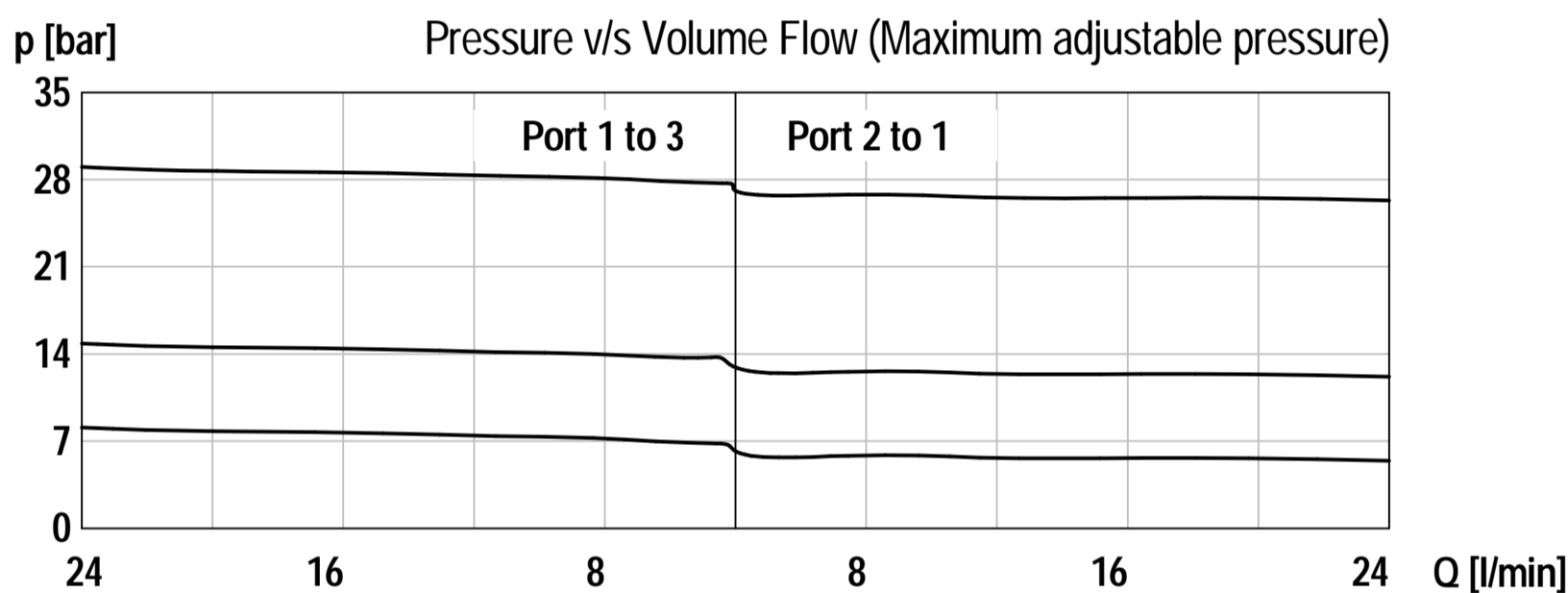
FEATURES

Hardened, match ground and honed working parts assures a long and trouble-free working life. There is a consistent and stable, high capacity operation due to the pilot operated design. Cartridge construction gives maximum flexibility in mounting and ease of installation into customer's manifold.

DIMENSIONS



CHARACTERISTICS. Figures Based on: Oil Temp = 40°C, Viscosity = 40 cSt



General Specifications

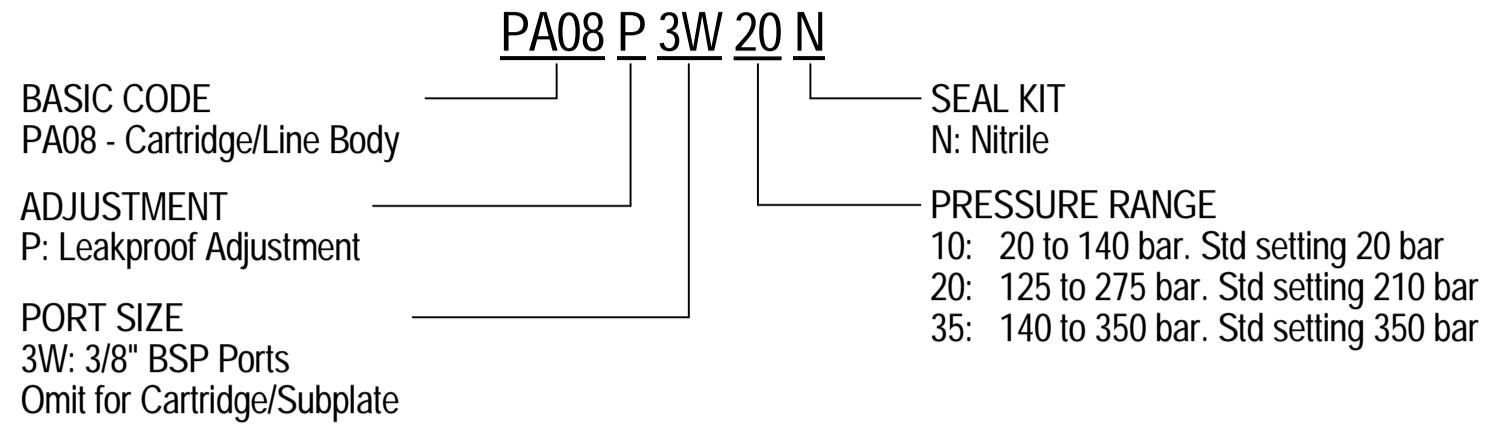
Description	pilot operated sequence valve
Construction	Screw-in Cartridge Construction for Cavity
Mounting	M22 x 1.5 screw thread for cartridge Threaded ports for housings.
Installation Position	any
Tightening Torque	60 Nm
Ambient Temp.	-20°C to +50°C
Cartridge Material	Working parts: Hardened, ground steel External surfaces: Zinc plated
Manifold Material	Aluminium or SG Iron
Cavity Number	SAE08-3 (Refer Cavities Section)
Weight	PS 65 Cartridge: 0.20 kg PS 65 * 4W **: 0.48 kg PSC 65 * 4W ** IN1:0.53 kg

Hydraulic Specifications

Hydraulic Fluid	Mineral oils. Contact sales office for other fluids.
Max. Pressure	350 bar
Rated Flow	20 lpm
Max. Contamination Level	BS5540/4 Class 18/16/13 (25µ nominal)
Viscosity Range	5 to 500 cSt
Leakage Flow	35 ml/min (max.)
Hydraulic Fluid Temp.	-20°C to +90°C (Standard Seals)
Mounting	Line/Subplate
Peak Pressure	400 bar
Max. Flow	50 lpm
Seal Kit Number	SKPA08 (Nitrile)

Pressure Reducing/Relieving Valve

ORDERING CODE



DIMENSIONS

BASIC CODE: PA 08 * 3W **

ONLY Body Part Numbers

Aluminium SG Iron
3/8" BSPP - Z10009 3/8" BSPP - Z10009S

