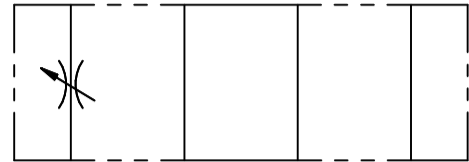
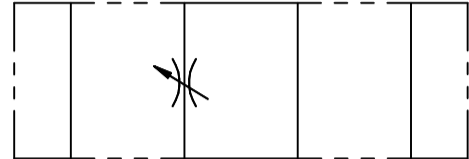


FLUID POWER SYMBOL

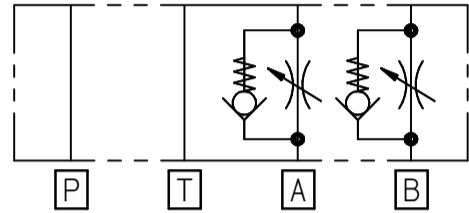
DGMFN3 P



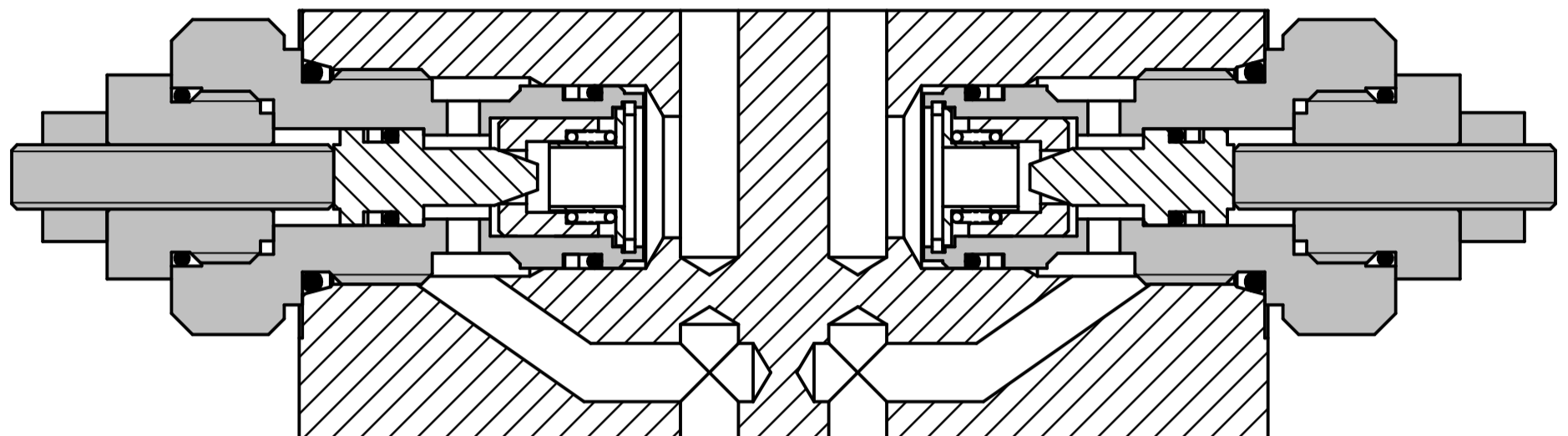
DGMFN3 T



DGMFN3 A B



AS SHOWN



Application

The modular or sandwich valve is stacked along with directional valves in CETOP 3 interfaces to provide a flow control valve system. The valve can be used to control the flow from the pump, create backpressure in the tank line or to either meter in or meter out the flow in the A and B lines.

Operation

A fine tread on the adjustable throttle reveals an annular gap, controlling the flow in the forward/reverse direction. The adjusted throttle cross-section produces a pressure drop which determines the volume flow. Flow to/from either of the actuator ports (A or B) allow free flow in the opposite direction.

Features

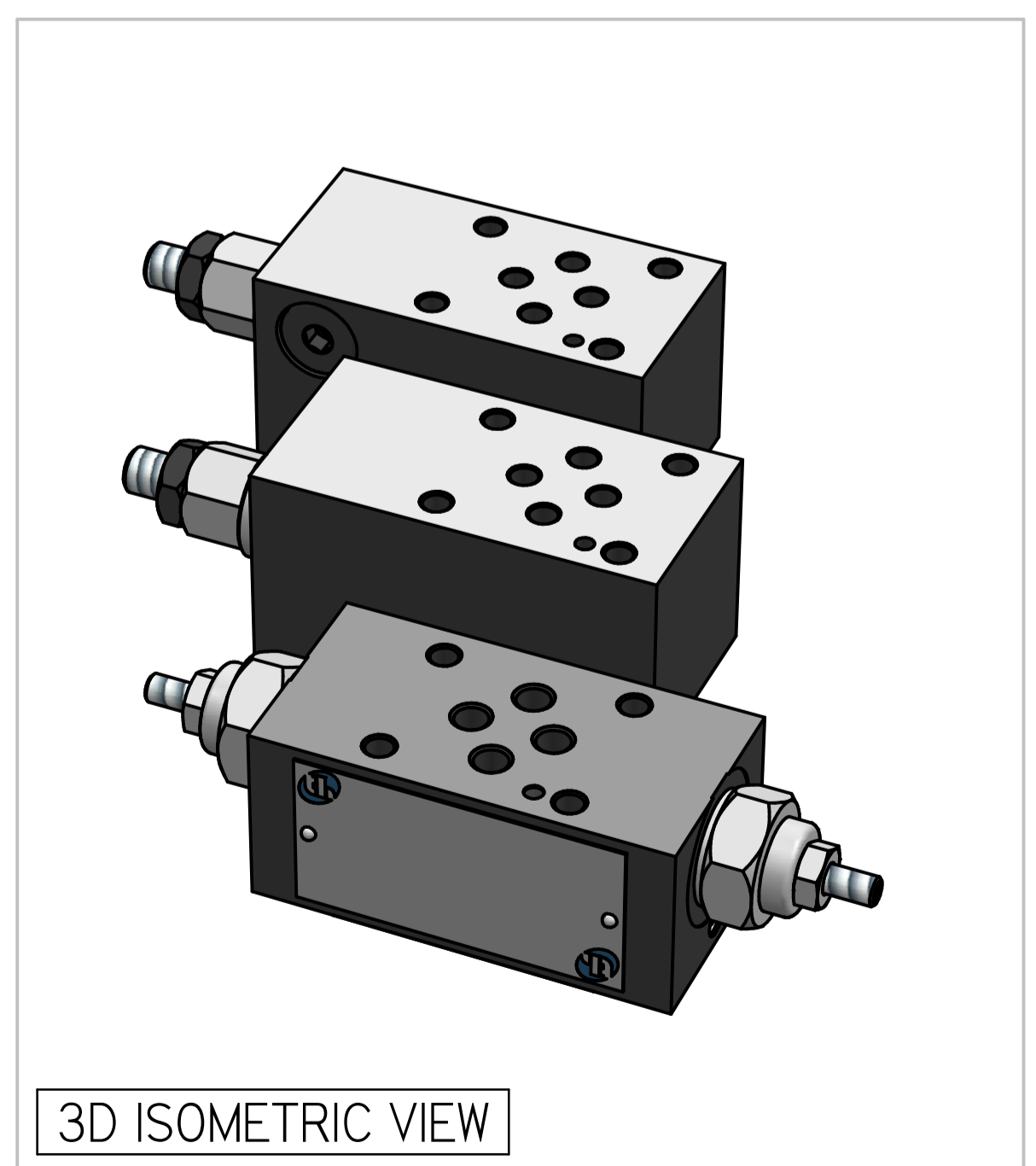
Sandwich construction offers a compact solution. Hardened working parts ensure a long, reliable and trouble-free life. The cartridge construction gives flexibility in servicing.

12

Specifications

Figures based on: Oil Temp = 40°C Viscosity = 40 cSt

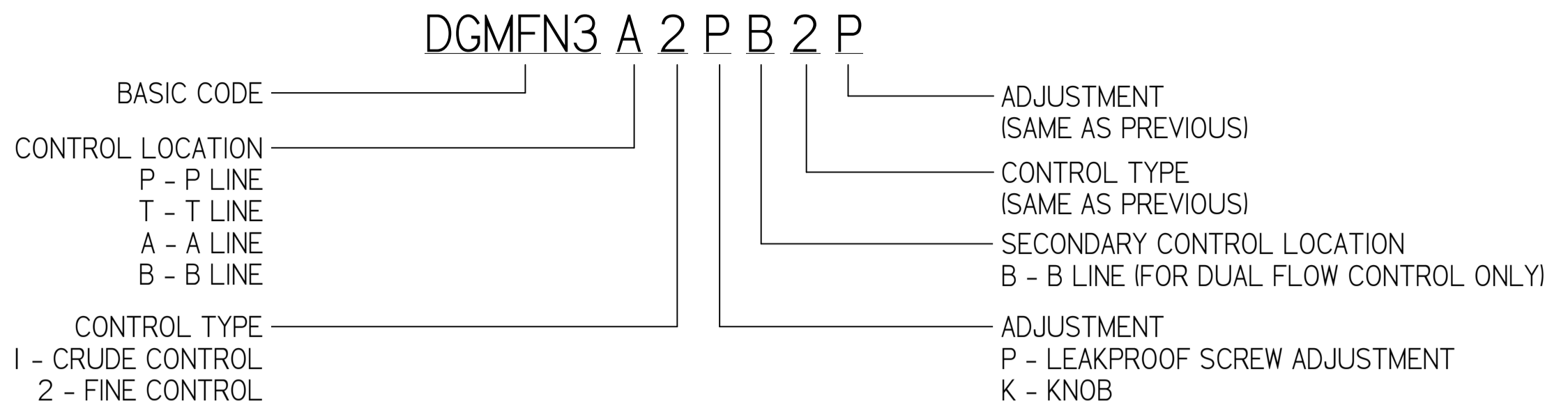
Max Flow	60 lpm
Max Pressure	350 bar
Cartridge Material	Working parts : Hardened, ground steel External surfaces : Zinc plated
Weight	DGMFN3 P: 1.12 kgs DGMFN3 AB: 1.12 kgs
Manifold Material	SG Iron
Mounting	CETOP3
Seal Kit Number	SKDGMFN3 (Nitrile) SKDGMFN3V (Viton®)
Filtration Level	BS5540/4 Class 18/13 (25µ nominal)
Operating Temp	-20°C to +90°C (Standard Seals)
Leakage	Less than 0.3 millilitres/min (5 dpm)
Viscosity Range	5 to 500 cSt



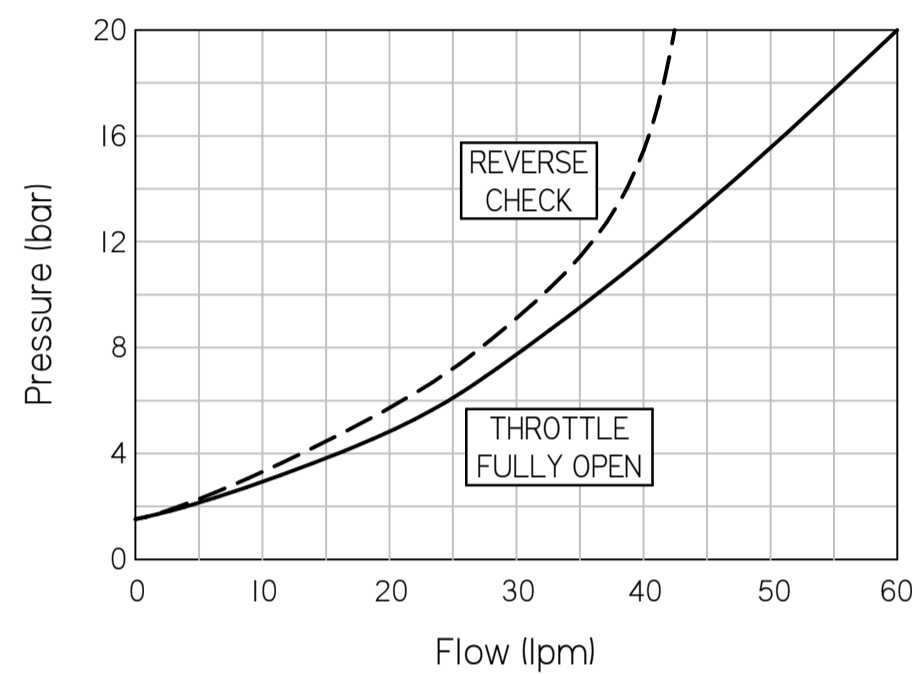
3D ISOMETRIC VIEW

Where measurements are critical request certified drawings. We reserve the right to change specifications without notice.

TO ORDER

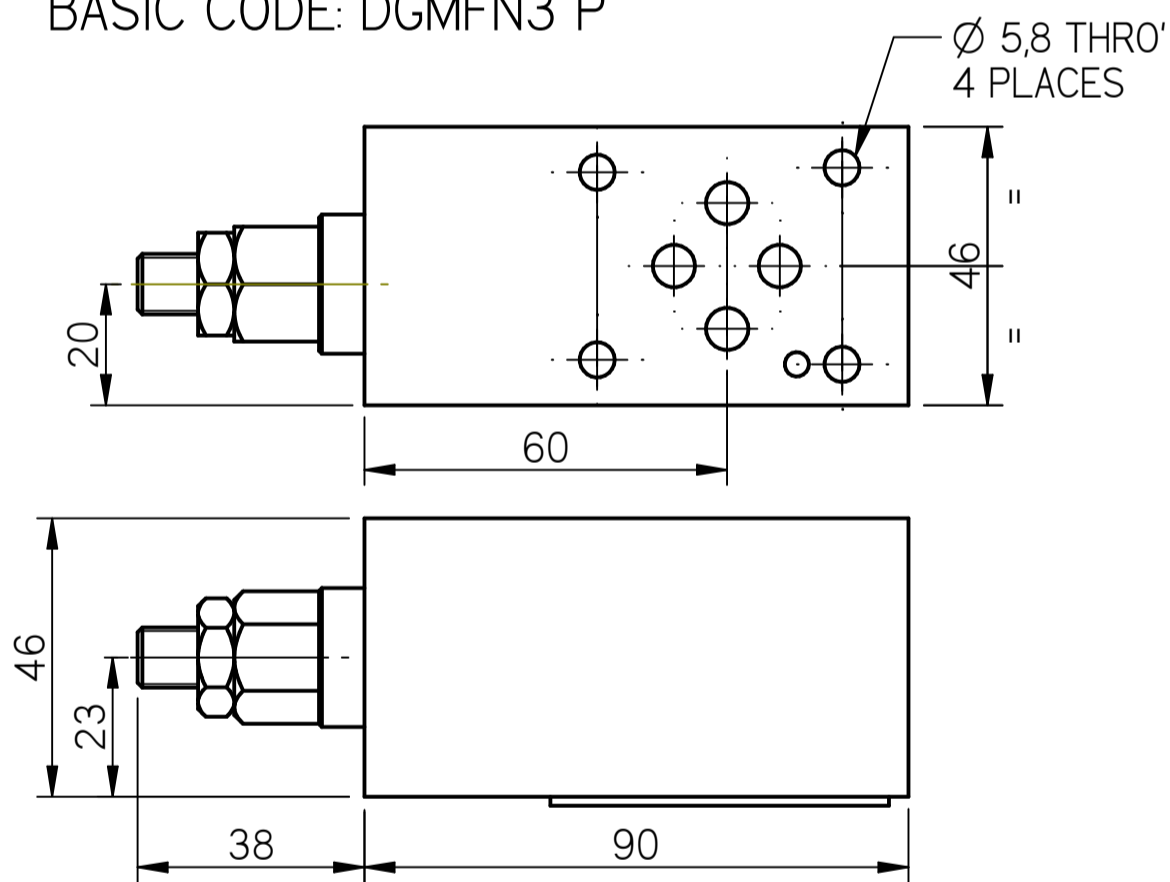


PRESSURE CHARACTERISTICS



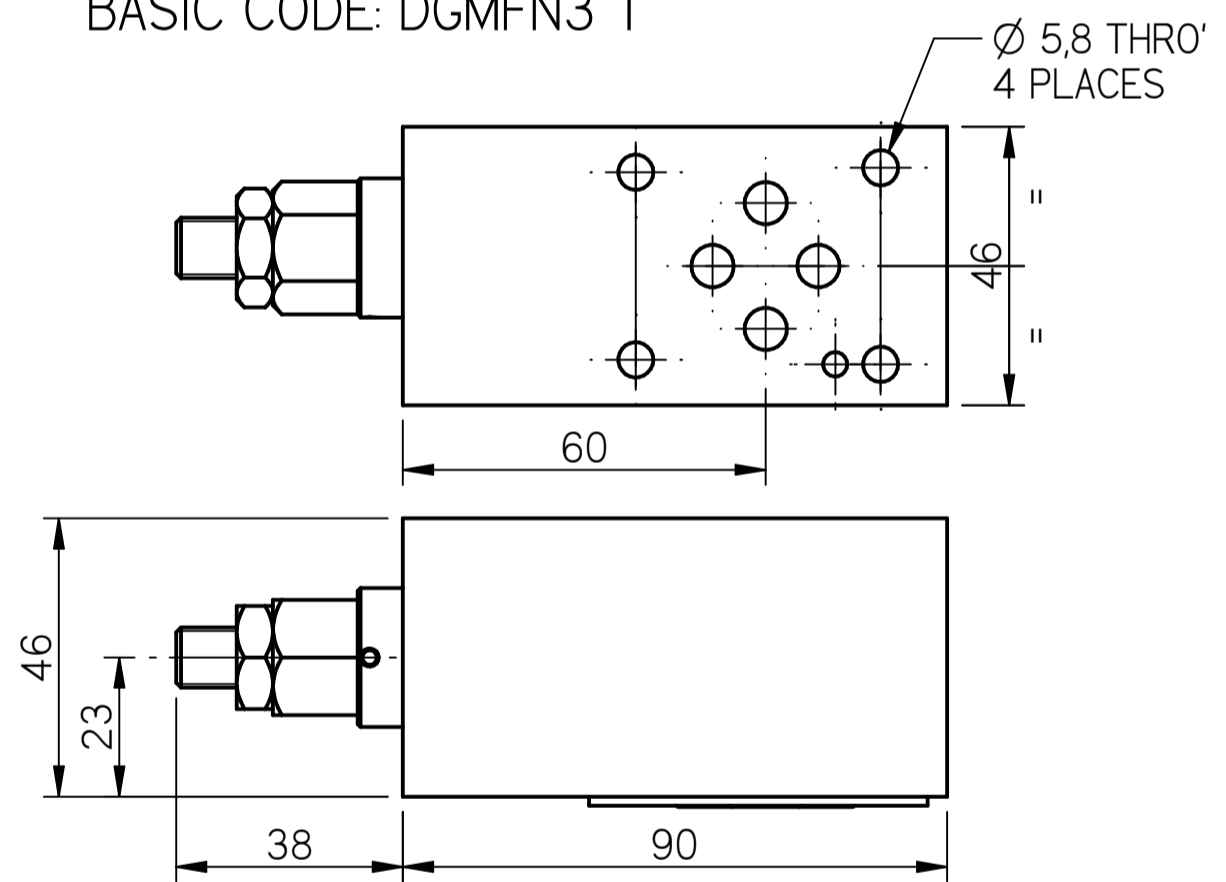
COMPLETE VALVE CETOP3

BASIC CODE: DGMFN3 P



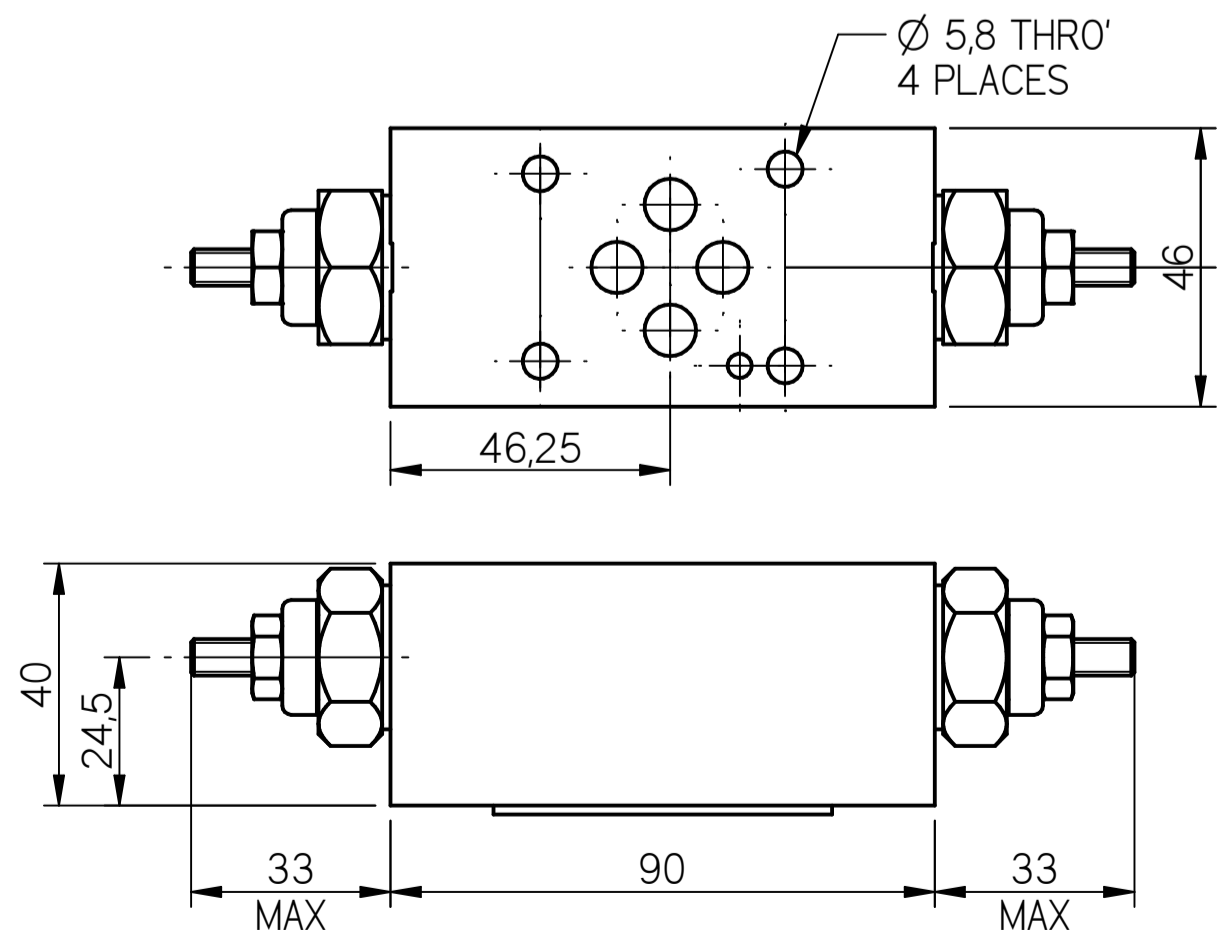
COMPLETE VALVE CETOP3

BASIC CODE: DGMFN3 T



COMPLETE VALVE CETOP3

BASIC CODE: DGMFN3 A B



Where measurements are critical request certified drawings. We reserve the right to change specifications without notice.