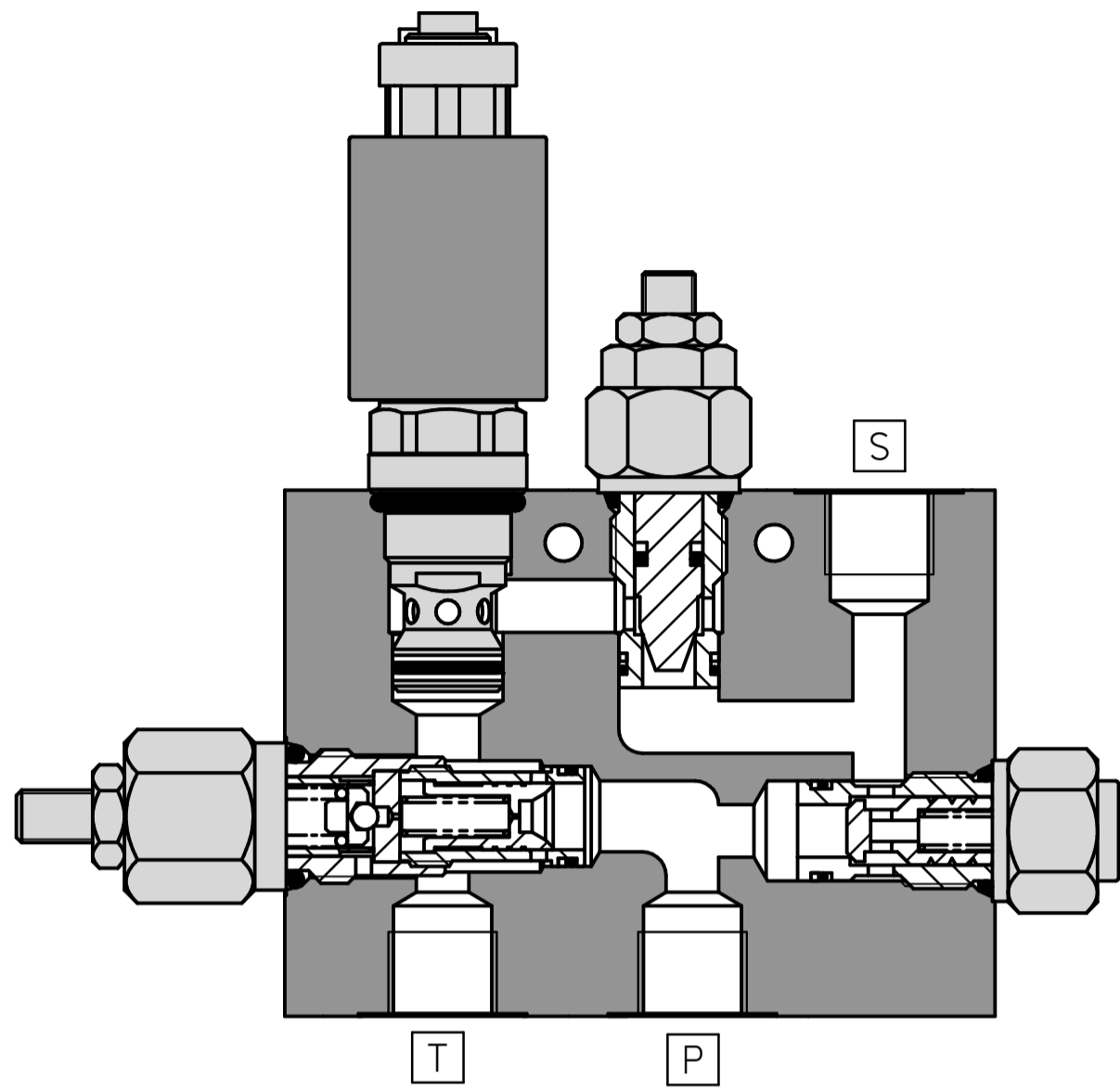
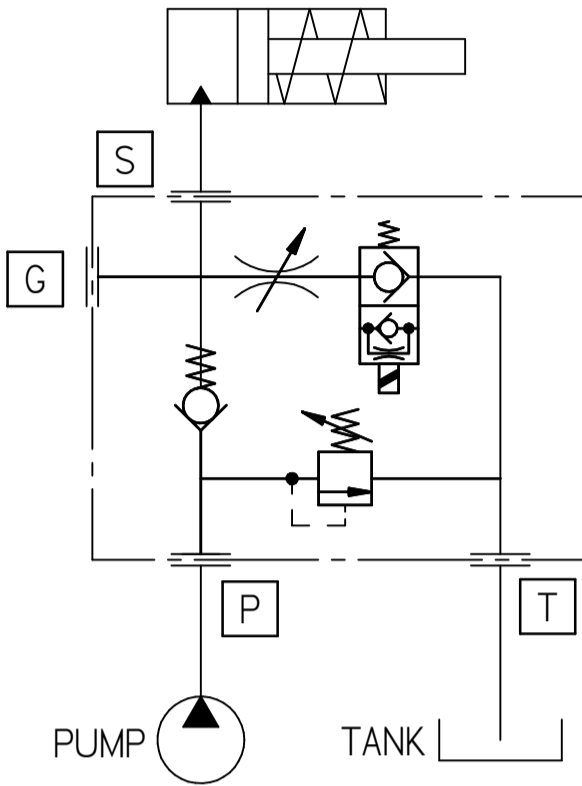


FLUID POWER SYMBOL



Application

Lift Lower blocks are a compact hydraulic solution to control single acting cylinders that are generally mounted on stackers and scissor lifts. They offer a complete solution for lifting, controlled lowering and safety of the pump, cylinder and personnel.

Operation

When the pump is switched on, the oil from the pump extends the cylinder. After full extension, the Check Valve (1) holds the load in place at which point the pump can be switched off. To lower the valve, the Solenoid Valve (3) is energized which opens the flow of oil to tank. The rate of lowering is adjusted by means of a Flow Control Valve (2). There is an inbuilt Relief Valve (4) for pump protection in case of a rise in pressure.

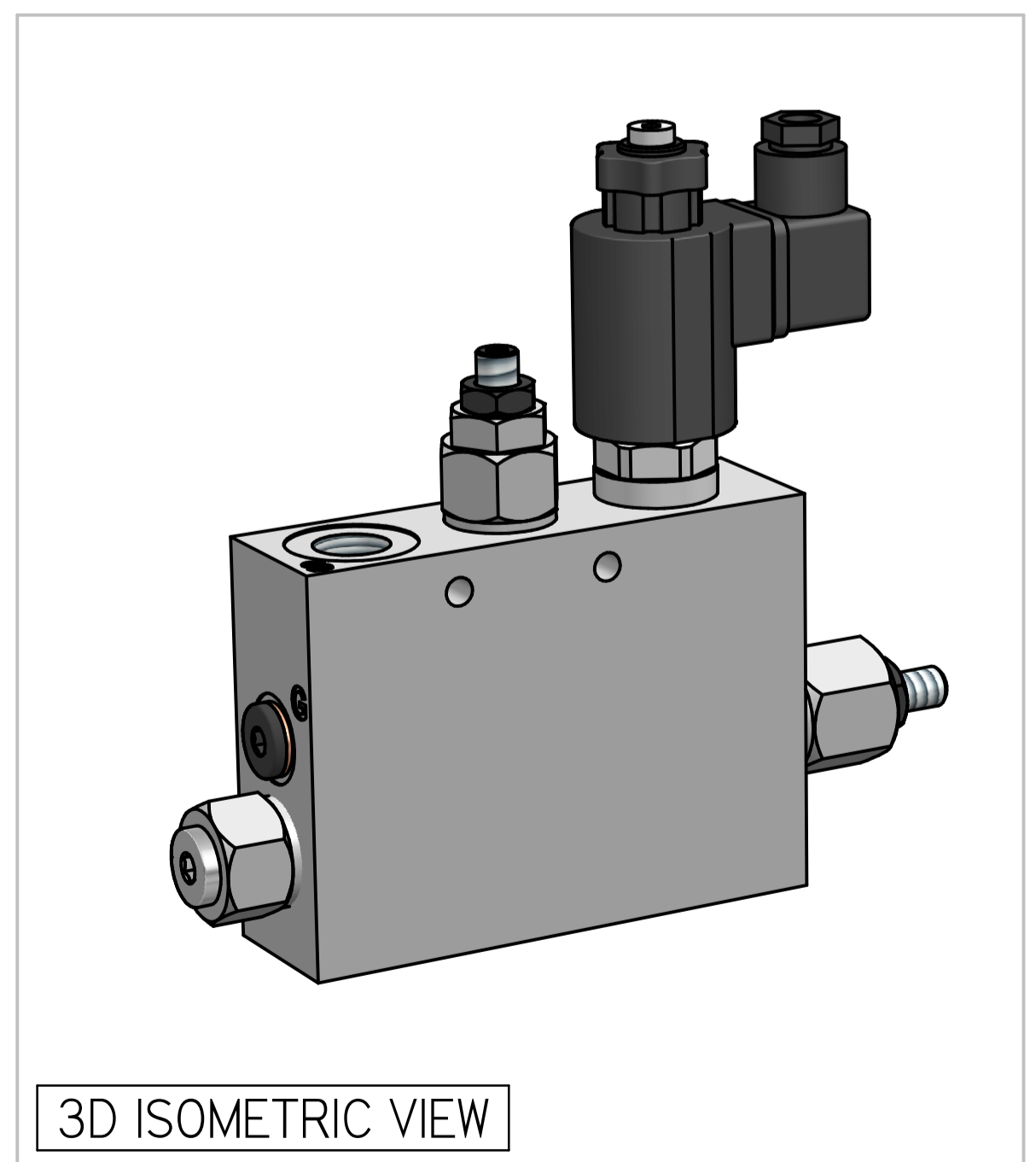
Features

The system is mounted on the framework of the stacker/scissor lift itself. The compact nature of the hydraulic system reduces the need for bulky valves and piping. Solenoid valves are available with a manual over-ride function to lower the platform in case of power failure. Due to the load holding nature of the system, there is no need for the pump to offer continuous duty and hence there is reduced power consumption.

Specifications

Figures based on: Oil Temp = 40°C Viscosity = 40 cSt

Rated Flow	50 litres/min
Max Pressure	250 bar
Manifold Material	Aluminium (upto 250 bar)
Weight	4.6 Kgs
Filtration	BS5540/4 Class 18/13 (25µ nominal)
Operating Temp	-20°C to +90°C (Standard Seals)
Leakage	Less than 0.3 millilitres/min (5 dpm)
Viscosity Range	5 to 500 cSt



Where measurements are critical request certified drawings. We reserve the right to change specifications without notice.

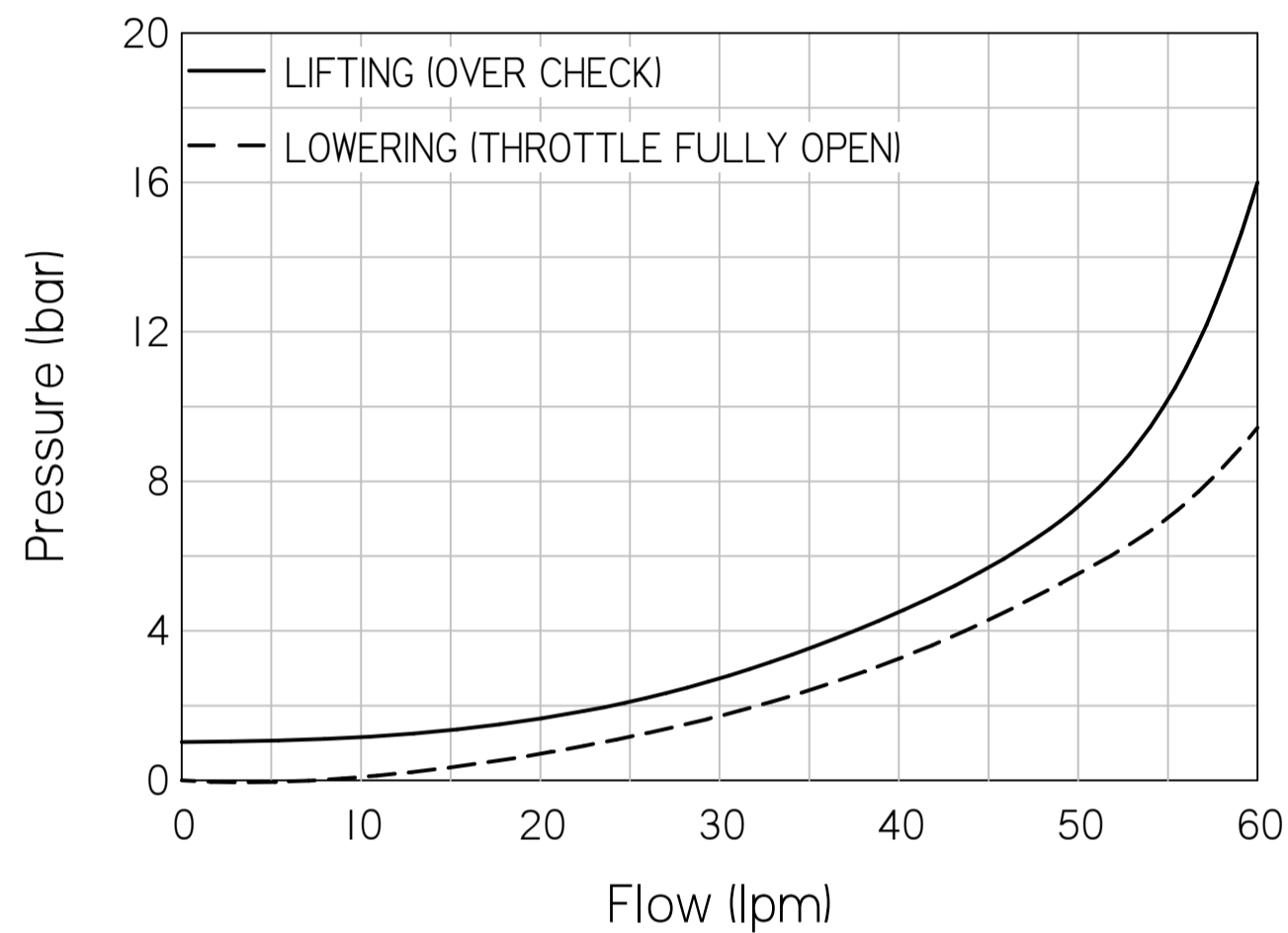
TO ORDER

LLB50 24 2

BASIC CODE ————
 VOLTAGE RATING ————
 12: 12 VDC
 24: 24 VDC
 230: 230 VAC

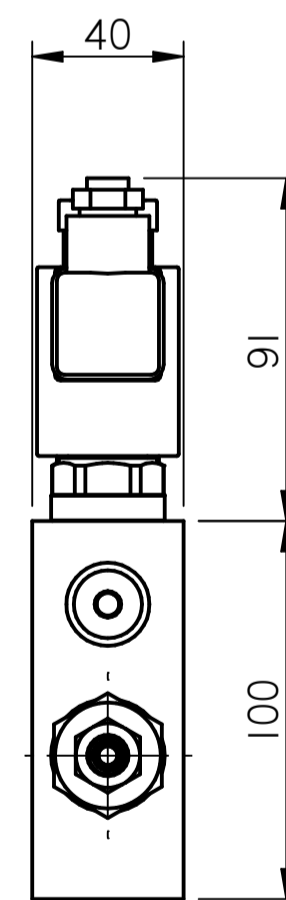
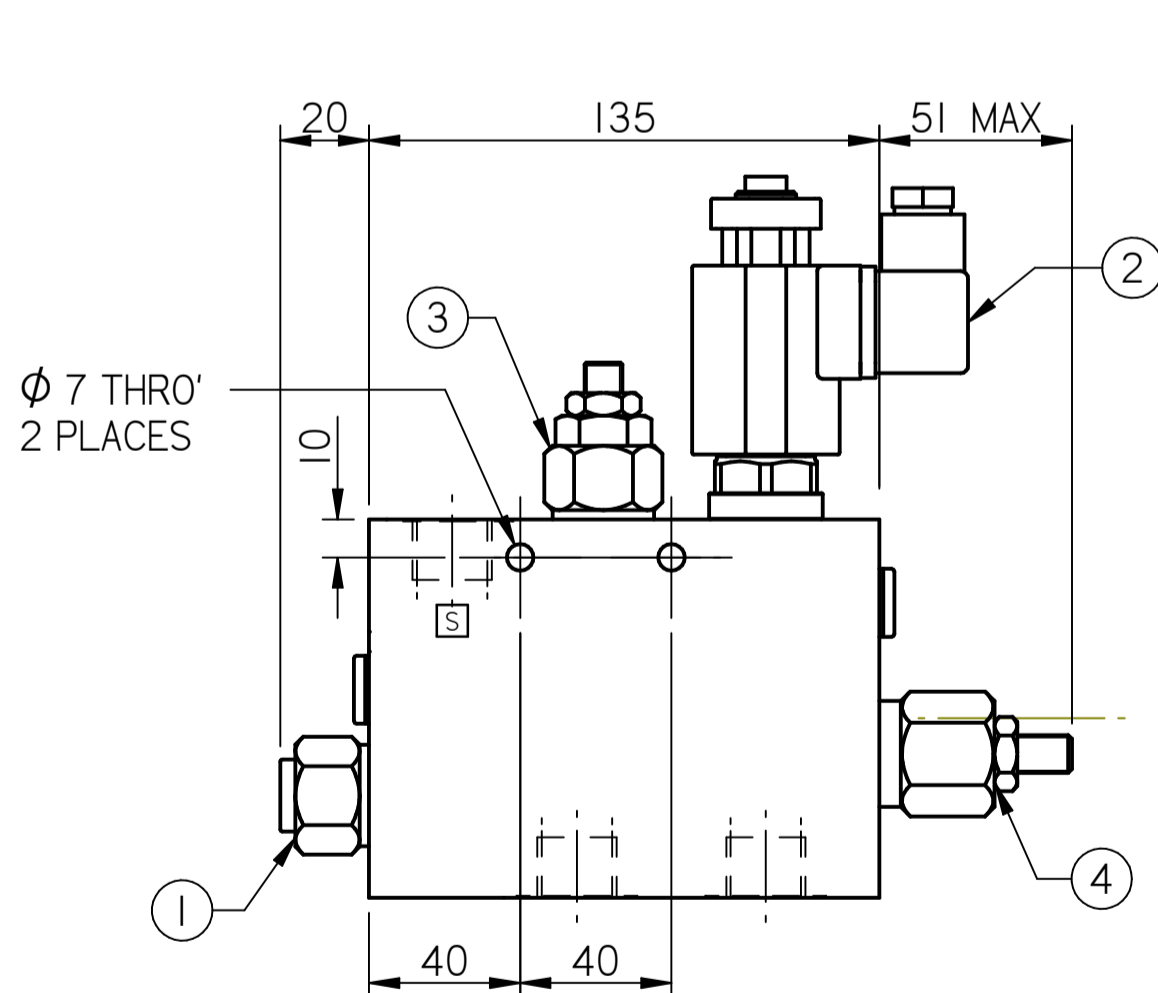
MANUAL OVERRIDE
 2: WITH MANUAL OVERRIDE
 OMIT IF NOT REQUIRED

PRESSURE CHARACTERISTICS



COMPLETE VALVE 1/2" BSP PORTS

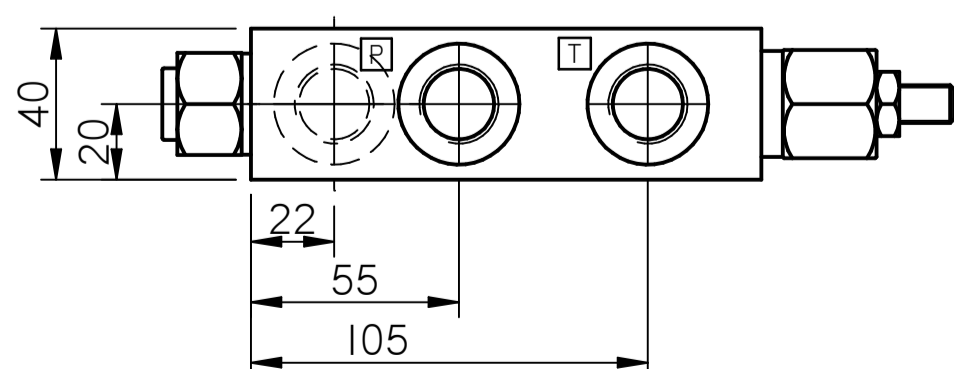
BASIC CODE: LLB50



14

CARTRIDGES AND PORTS

Ports	Cartridges
S 1/2" BSP	1 Check Valve
P 1/2" BSP	2 Solenoid Valve
T 1/2" BSP	3 Flow Control Valve
G 1/4" BSP	4 Relief Valve



Where measurements are critical request certified drawings. We reserve the right to change specifications without notice.