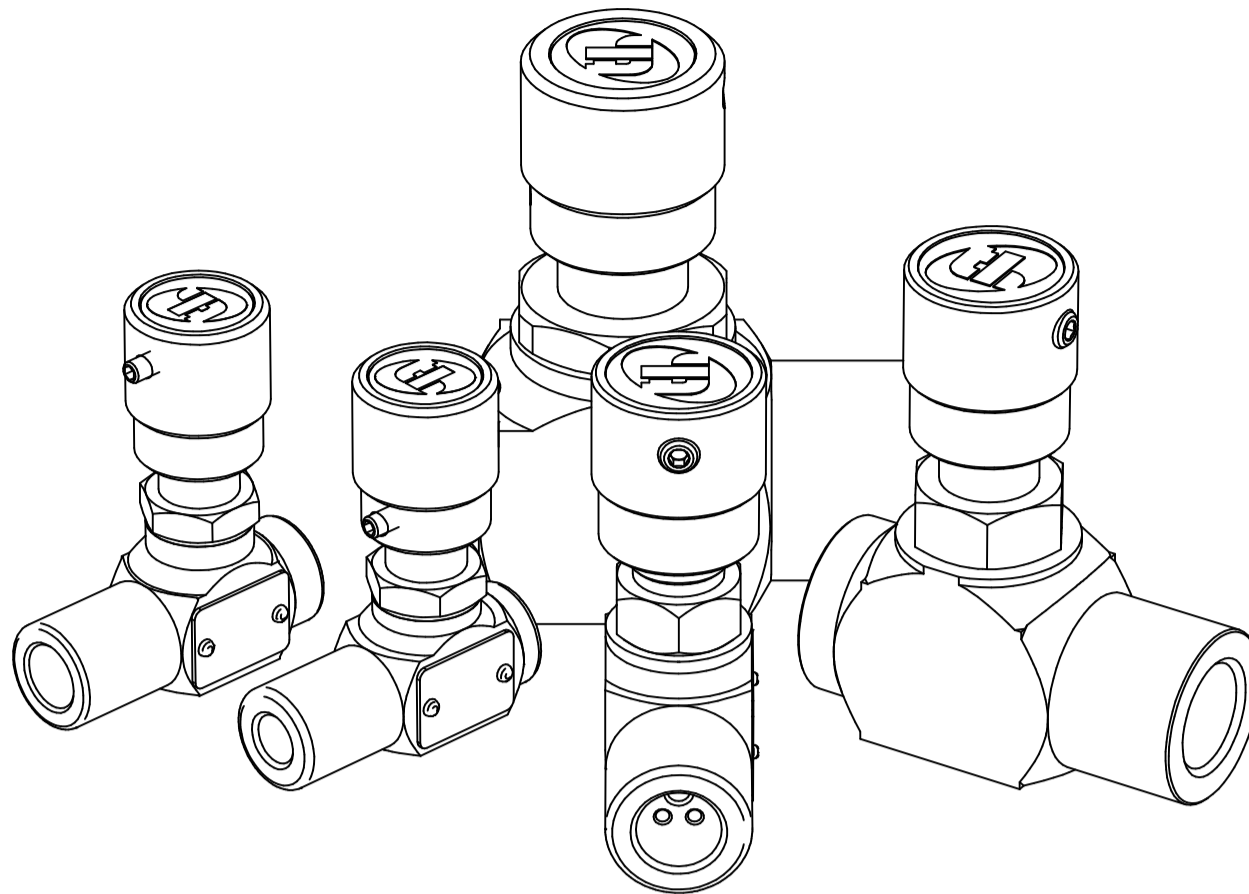
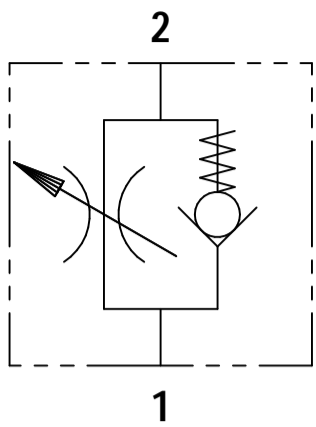




TCV

FLUID POWER SYMBOL



6

APPLICATION

Line mounted Throttle Check valves are used to provide variable flow restriction in one direction with free flow in the opposite direction. This valve can be used where volume flows must be infinitely controlled in one direction without taking pressure fluctuations into account.

OPERATION

A fine thread on the adjustable throttle determines the volume flow. The volume flow is zero from Port 2 to Port 1 when the throttle is screwed in (the metal sealing edge seals completely, minimal leakage flow). As the thread is screwed out, the flow rate will increase. The valve flow is controlled unidirectionally with reverse flow being unrestricted.

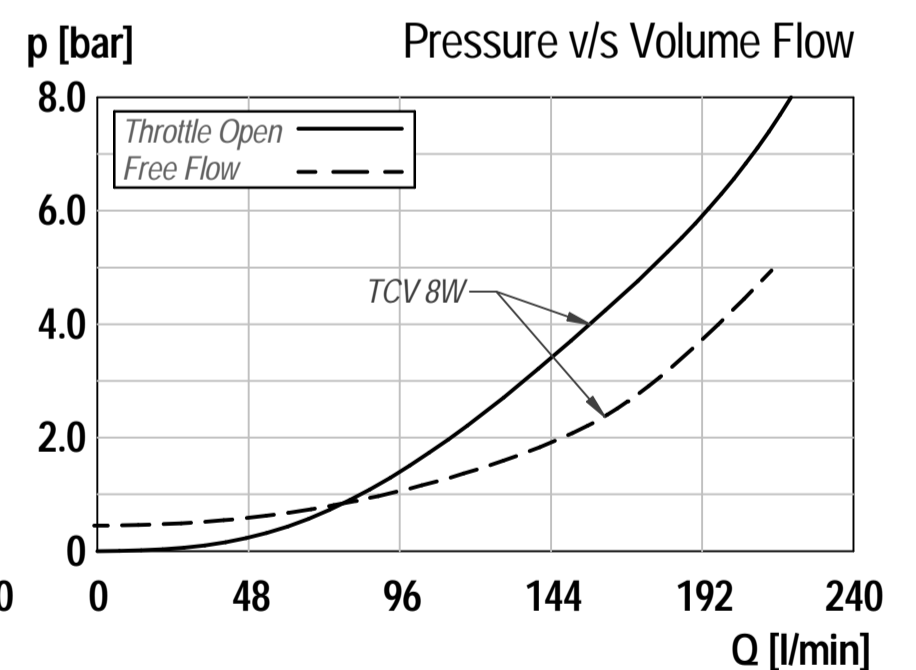
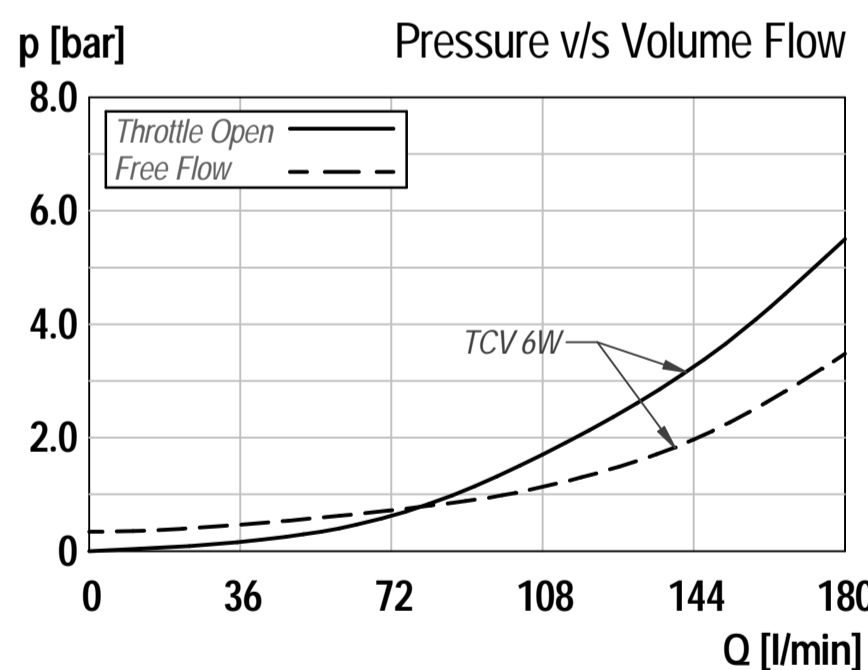
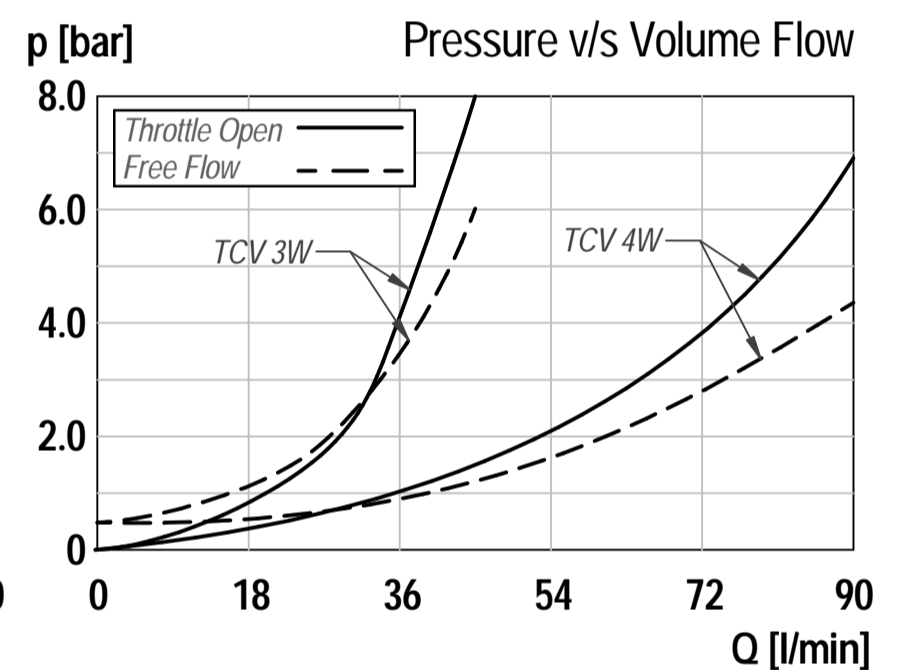
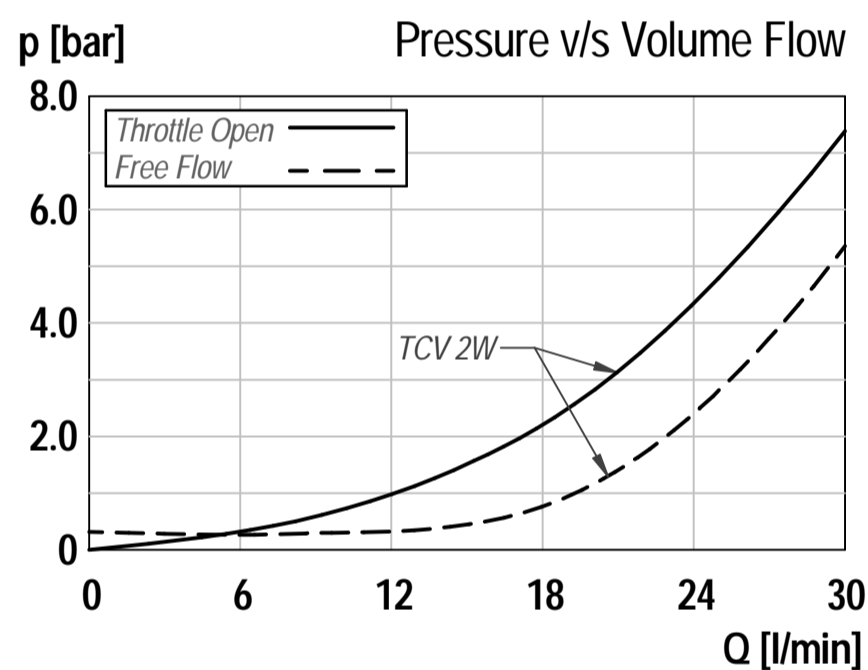
FEATURES

The line mounted bodies come with standard pipe threading to allow easy installation in any hydraulic circuit. All steel construction and hardened working parts ensure a reliable and trouble-free life. Robust machined aluminium knobs provide an excellent tactile feedback.

DIMENSIONS

CHARACTERISTICS. Figures Based on: Oil Temp = 40°C, Viscosity = 40 cSt

See chart



General Specifications

Description	flow control valve, reverse check	
Construction	parts-in-body construction for threaded ports	
Mounting	BSP Threaded ports	
Installation Position	any	
Tightening Torque	Not applicable	
Ambient Temp.	-50°C to +60°C	
Construction Material	Working parts: Hardened, ground steel External surfaces: Zinc plated	
Cavity Number	Not applicable	
Weight	TCV 2W:	0.40 kg
	TCV 3W:	0.42 kg
	TCV 4W:	0.75 kg
	TCV 6W:	1.25 kg
	TCV 8W:	2.25 kg

Hydraulic Specifications

Hydraulic Fluid	Mineral oils. Contact sales office for other fluids.
Max. Pressure	350 bar
Rated Flow	See chart
Max. Contamination Level	BS5540/4 Class 18/16/13 (25µ nominal)
Viscosity Range	5 to 500 cSt
Leakage Flow	Less than 0.3 ml/min (5 dpm)
Hydraulic Fluid Temp.	-30°C to +90°C (Standard Seals)
Mounting	Line
Peak Pressure	400 bar
Max. Flow	See chart
Seal Kit Number	Not applicable

Throttle Check Valve

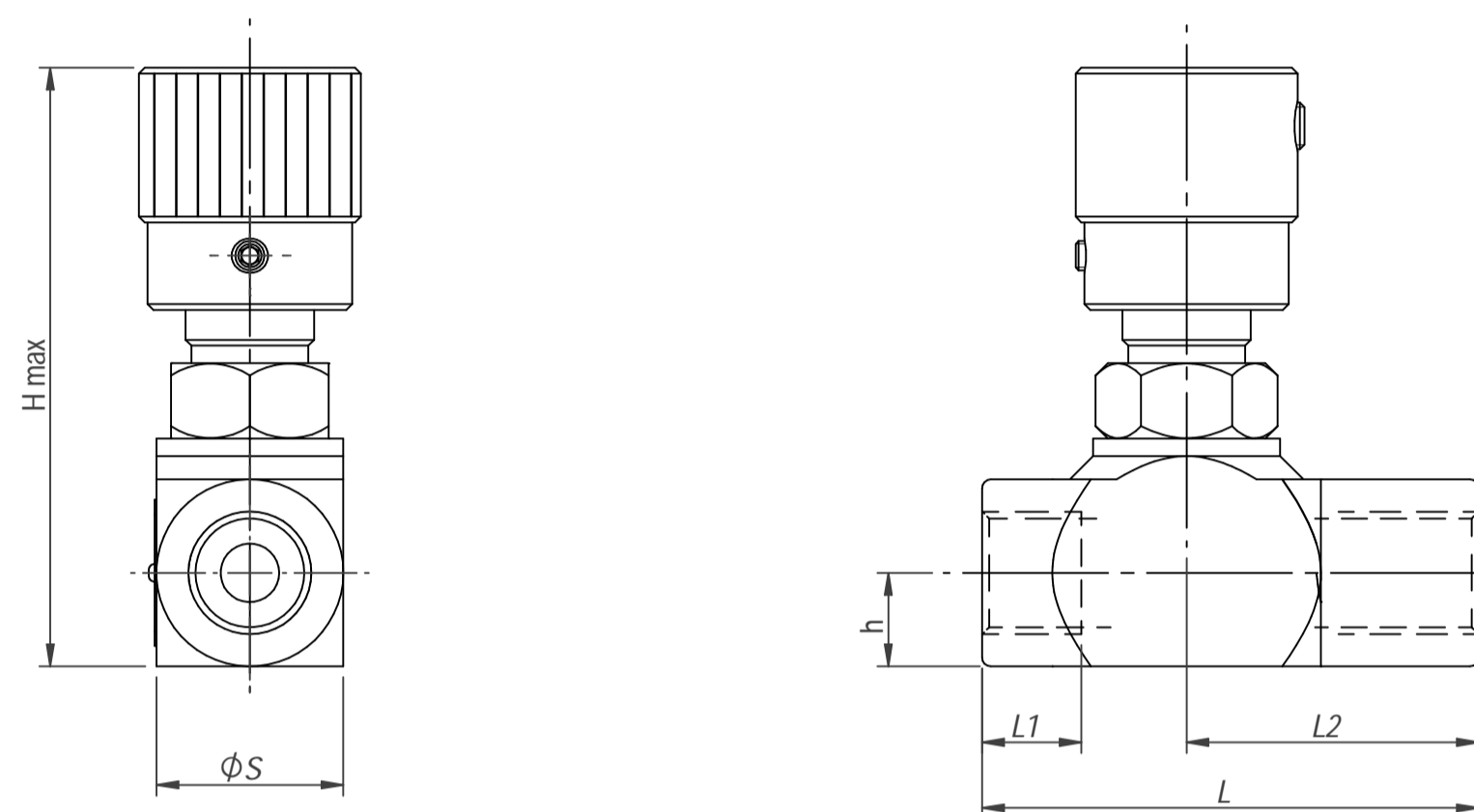
ORDERING CODE

TCV 2W

BASIC CODE PORT SIZE
TCV - Line Body See chart below.

DIMENSIONS

BASIC CODE: TCV



Order	Pressure (bar)	G (BSP)	S (mm)	L (mm)	L1 (mm)	L2 (mm)	D (mm)	Hmax (mm)	h (mm)	Seal Kit	Weight (kg)	Check Type
TCV 2W	350	1/4"	25	70	12	46	32	92	12	SKTCV2W	0.60 Kg	Poppet
TCV 3W	350	3/8"	25	71	15	45	32	92	12	SKTCV3W	0.60 Kg	Poppet
TCV 4W	350	1/2"	32	85	16	50	38	110	16	SKTCV4W	1.10 Kg	Ball
TCV 6W	300	3/4"	41	95	19	58	38	120	21	SKTCV6W	1.60 Kg	Poppet
TCV 8W	300	1"	50	120	21	75	45	132	25	SKTCV8W	2.80 Kg	Poppet