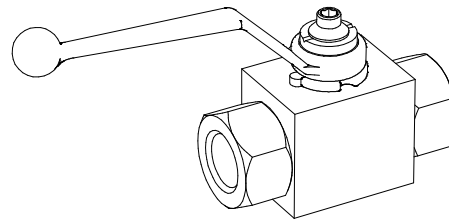
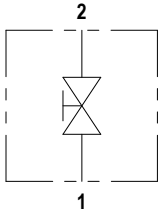




BKH

FLUID POWER SYMBOL



APPLICATION

Line mounted Ball valves are used to manually open or close the flow into a hydraulic circuit. These valves find use in isolation of pressure gauges or to shut off a particular line. The valves can also be used as a safety shut off or to unload pumps at zero pressure where there is a danger of a load spike on startup.

OPERATION

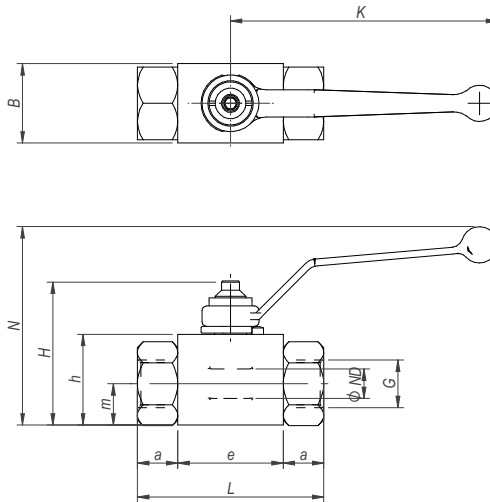
Turning the handle clockwise or anti clockwise closes or opens the valve to flow respectively. The stop disk can be held in place by the dowel if a particular setting has to be fool proofed.

FEATURES

The line mounted three-part bodies come with standard pipe threading to allow easy installation in any hydraulic circuit. All steel construction ensures a reliable and trouble-free life. Black POM seats with MoS₂ additives give a smooth operating feel.

DIMENSIONS

6



Model Code	Pressure	G	a	ND	L	e	B	H	h	m	K	N	Weight
BKH 2W	500 bar	1/4" BSP	14	10	72	42	32	60	38	17.5	118	81	0.58 Kg
BKH 3W	500 bar	3/8" BSP	14	10	72	42	32	60	38	17.5	118	81	0.57 Kg
BKH 4W	500 bar	1/2" BSP	16	13	83	47	35	62	40	19.0	118	95	0.72 Kg
BKH 6W	350 bar	3/4" BSP	18	20	95	61	49	76	57	24.5	193	80	1.70 Kg
BKH 8W	350 bar	1" BSP	20	25	116	65	58	83	65	26.5	193	85	2.40 Kg
BKH 10W	350 bar	1-1/4" BSP	20	25	116	65	58	83	65	26.5	193	85	2.60 Kg
BKH 12W	350 bar	1-1/2" BSP	24	40	131	85	100	125	100	47.0	193	85	6.90 Kg

General Specifications

Description	ball valve
Construction	parts-in-body construction for threaded ports
Mounting	BSP Threaded ports
Installation Position	any
Tightening Torque	Not applicable
Ambient Temp.	-40°C to +50°C
Construction Material	Working parts: Hardened, ground steel External surfaces: Zinc plated
Cavity Number	Not applicable
Weight	See chart

Hydraulic Specifications

Hydraulic Fluid	Mineral oils. Contact sales office for other fluids.
Max. Pressure	See chart
Rated Flow	See chart
Max. Contamination Level	BS5540/4 Class 18/16/13 (25µ nominal)
Viscosity Range	5 to 500 cSt
Leakage Flow	Less than 0.3 ml/min (5 dpm)
Hydraulic Fluid Temp.	-20°C to +90°C (Standard Seals)
Mounting	Line
Peak Pressure	400 bar
Max. Flow	See chart
Seal Kit Number	Not applicable

