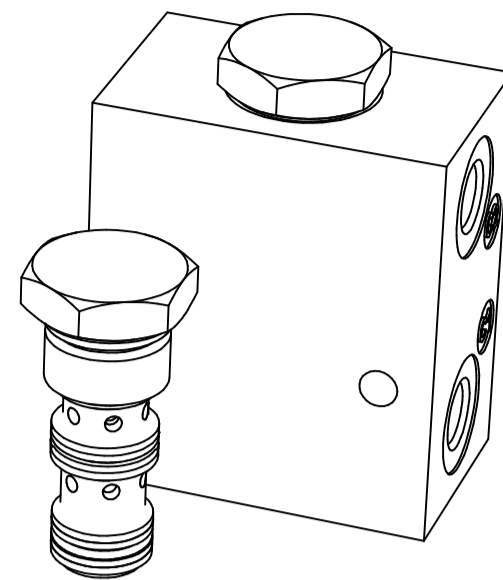
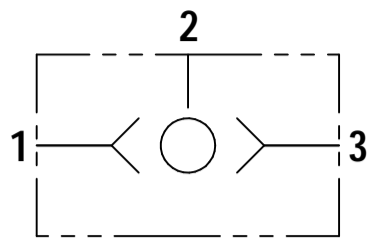




# SHU10

## FLUID POWER SYMBOL



5

## APPLICATION

This valve provides a means of sensing the higher pressures between two lines on a hydraulic circuit allowing this line to be used for an auxiliary function such as the removal of a mechanically applied brake, the operation of a gauge or to give a remote pressure sensing line for the control of a separate valve.

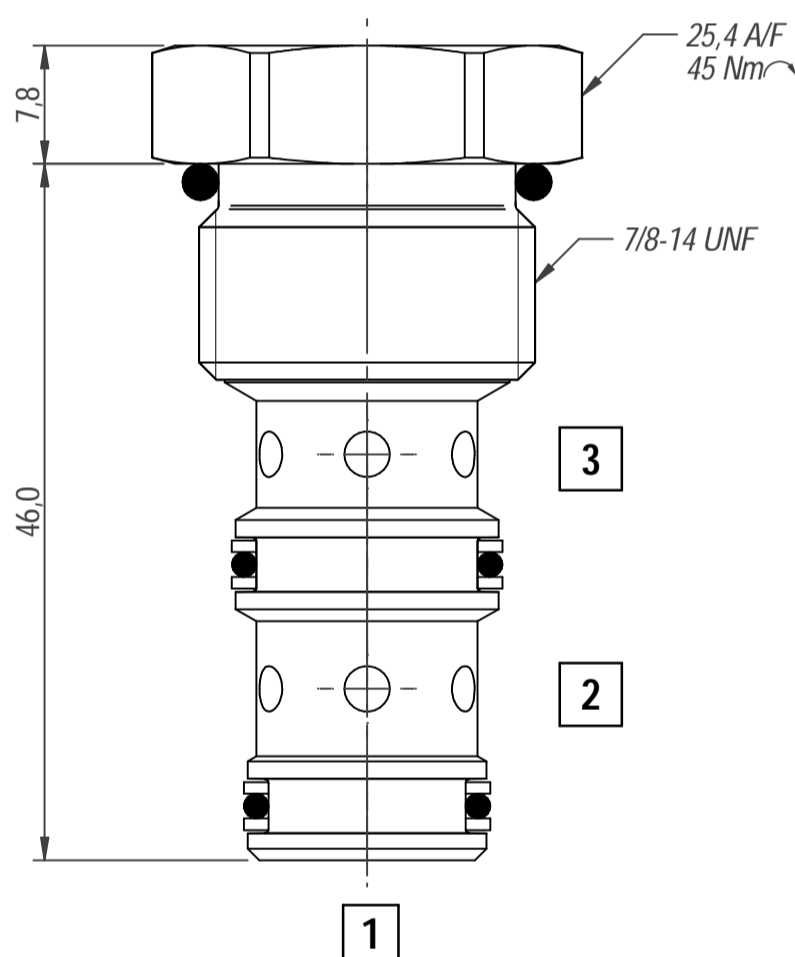
## OPERATION

When a higher pressure is sensed at Port 1 than at Port 3 the ball within the cartridge is forced against a seat closing Port 3, opening Port 1 to Port 2. When the higher pressure appears at Port 3 the ball is forced against the seat at Port 1 and opens up Port 3 to Port 2.

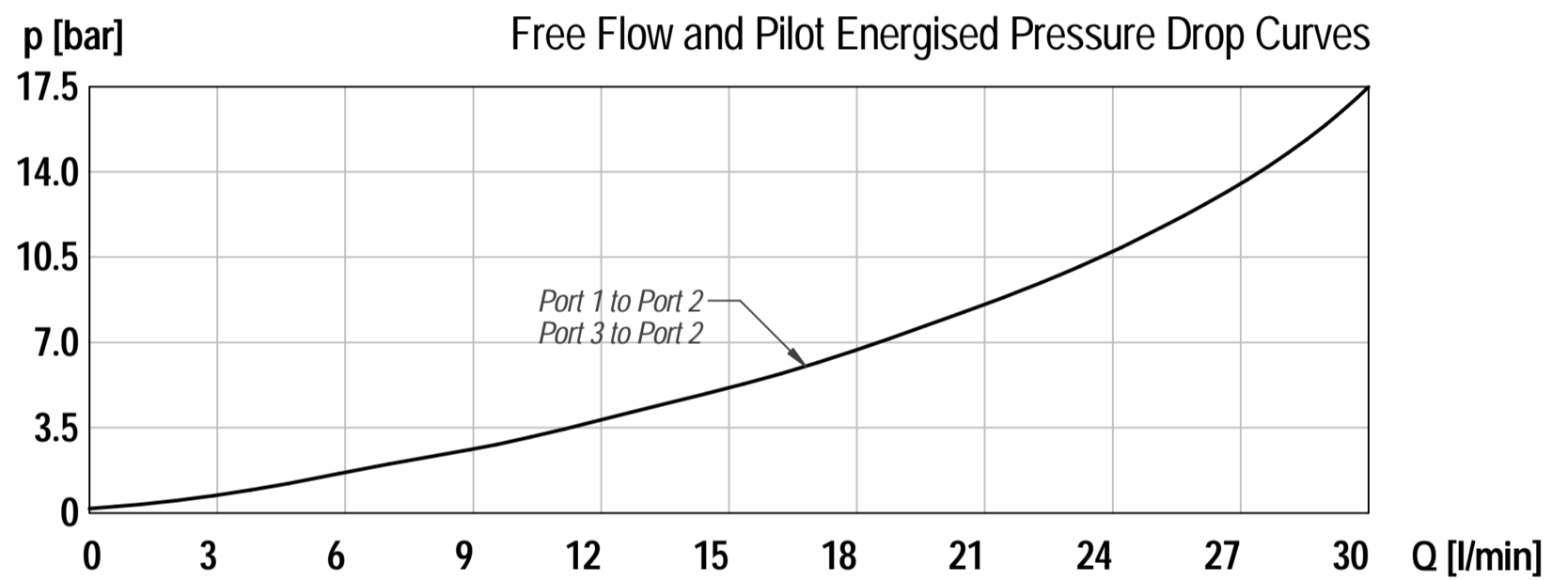
## FEATURES

Cartridge design enabling speedy servicing when mounted in a body or in a composite manifold.

## DIMENSIONS



## CHARACTERISTICS. Figures Based on: Oil Temp = 40°C, Viscosity = 40 cSt



## General Specifications

Description	shuttle valve
Construction	Screw-in Cartridge Construction for Cavity
Mounting	7/8"-14 UNF screw thread for cartridge Threaded ports for housings.
Installation Position	any
Tightening Torque	45 Nm
Ambient Temp.	-20°C to +50°C
Cartridge Material	Working parts: Hardened, ground steel External surfaces: Zinc plated
Manifold Material	Aluminium or SG Iron
Cavity Number	SAE10-3
Weight	SHU10 Cartridge: 0.13 kg SHU10 3W: 0.43 kg

## Hydraulic Specifications

Hydraulic Fluid	Mineral oils. Contact sales office for other fluids.
Max. Pressure	240 bar
Rated Flow	35 lpm
Max. Contamination Level	BS5540/4 Class 18/16/13 (25µ nominal)
Viscosity Range	5 to 500 cSt
Leakage Flow	Less than 0.3 ml/min (5 dpm)
Hydraulic Fluid Temp.	-20°C to +90°C (Standard Seals)
Mounting	Line
Peak Pressure	240 bar
Max. Flow	50 lpm
Seal Kit Number	SKSHU10 (Nitrile)

## ORDERING CODE

**SHU10 3W**

<p>BASIC CODE PCC 06 - Cartridge/Line Body</p>	<p>_____</p>	<p>_____</p>	<p>PORT SIZE 3W: 3/8 BSP PORTS OMIT FOR CARTRIDGE</p>
--	--------------	--------------	---

## DIMENSIONS

**BASIC CODE: SHU10 3W**

**ONLY Body Part Numbers**

Aluminium 3/8" BSPP - Z10050	SG Iron 3/8" BSPP - Z10050S
---------------------------------	--------------------------------

