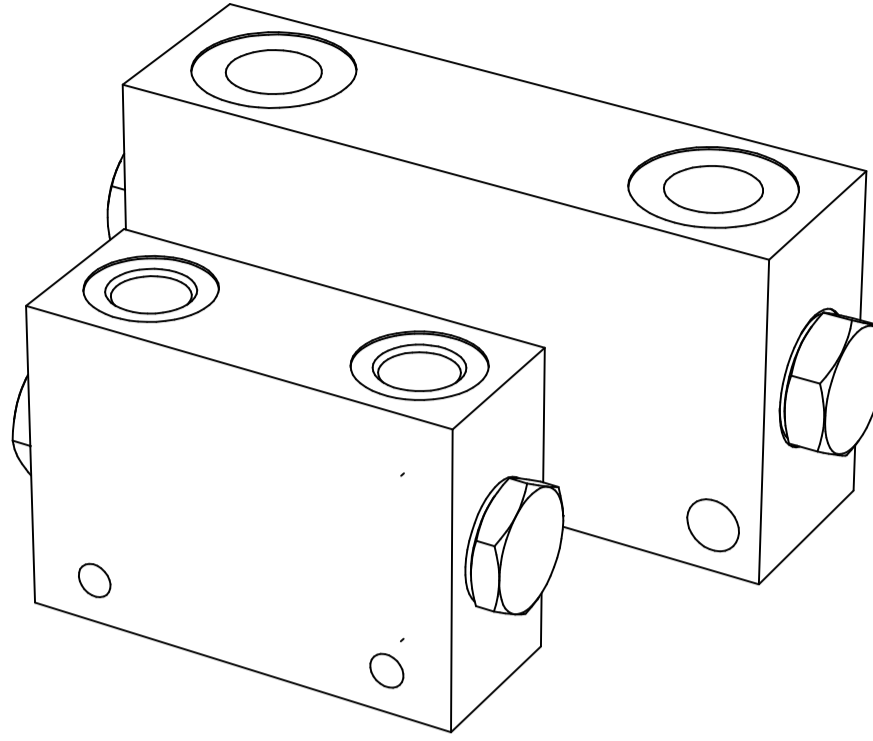
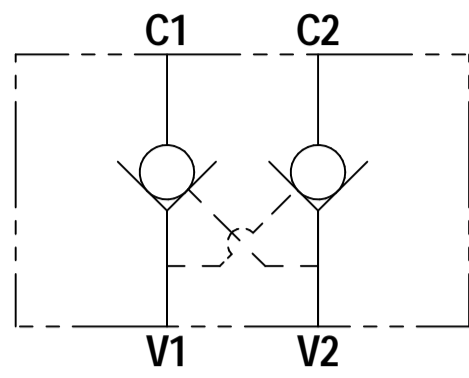




**DPC**

**FLUID POWER SYMBOL**



5

**APPLICATION**

Dual pilot check valves have two check valves that each allow flow to pass in one direction, with a low pressure drop, and then prevent reverse flow until pilot pressure is applied via the pressure port of the second check valve. These check valves give control over cylinders, holding and locking them in position until pilot pressure is applied.

**OPERATION**

Pressure on the valve port (V1 or V2) causes the poppet to lift against the spring force, allowing flow to the cylinder port (C1 or C2) while providing a pilot for the second valve via the pusher. Reverse flow is prevented by the check reseating.

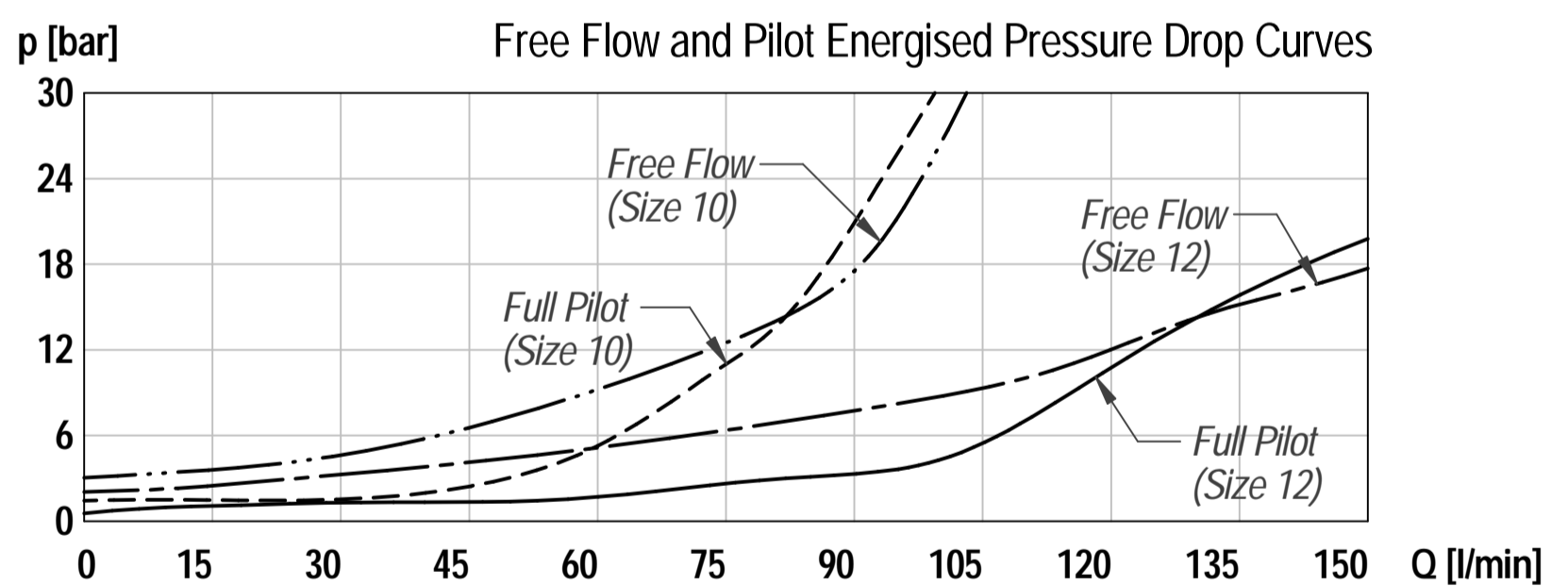
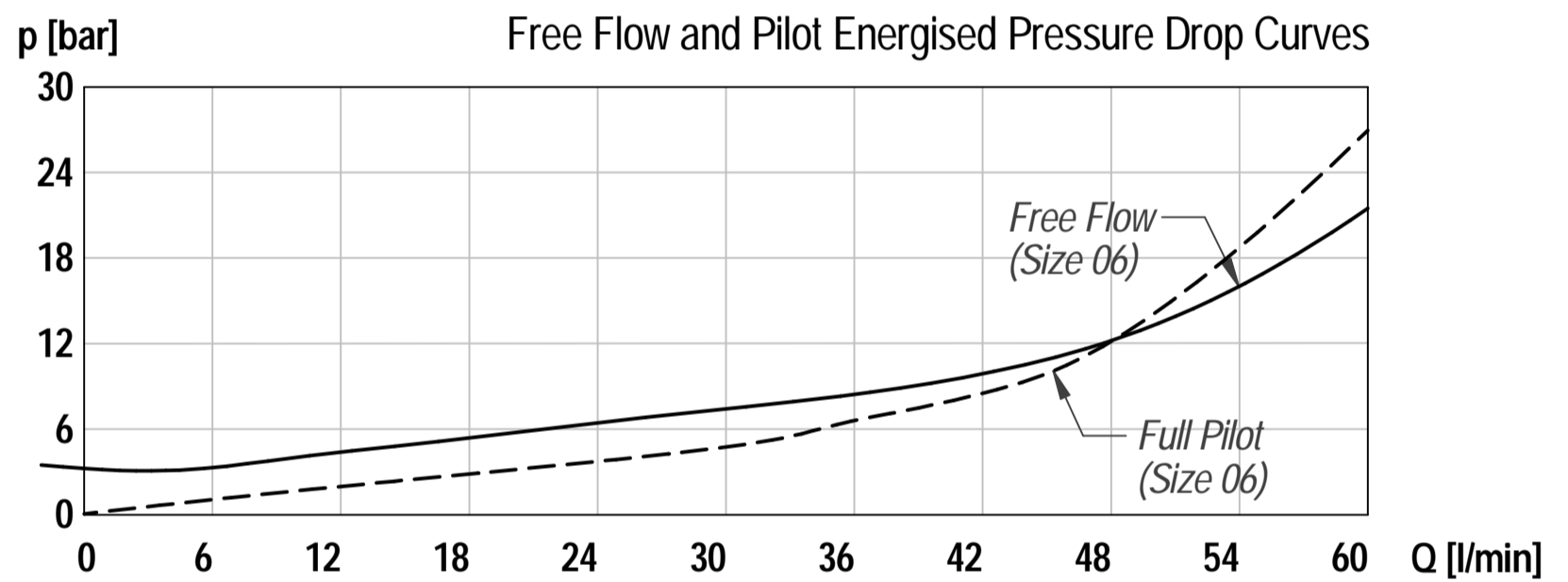
**FEATURES**

These valves use two check cartridges in a housing containing a pusher. The valve housings have 4 ports with mounting holes for immediate installation onto hydraulic systems. Moving parts are hardened and then match ground for a long service life.

**DIMENSIONS**

**CHARACTERISTICS. Figures Based on: Oil Temp = 40°C, Viscosity = 40 cSt**

See next page



**General Specifications**

Description	dual pilot check valve
struction	parts-in-body construction for threaded ports
Mounting	BSP threaded ports
Installation Position	any
Tightening Torque	not applicable
Ambient Temp.	-20°C to +50°C
Construction Material	Working parts: Hardened, ground steel External surfaces: Zinc plated
Cavity Number	Not applicable
Weight	DPC06 3W: 0.70 kg DPC10 4W: 1.30 kg DPC12 6W: 2.30 kg

**Hydraulic Specifications**

Hydraulic Fluid	Mineral oils. Contact sales office for other fluids.
Max. Pressure	350 bar (SG Iron version)
Rated Flow	see chart
Max. Contamination Level	BS5540/4 Class 18/16/13 (25µ nominal)
Viscosity Range	5 to 500 cSt
Leakage Flow	Less than 0.3 ml/min (5 dpm)
Hydraulic Fluid Temp.	-20°C to +90°C (Standard Seals)
Mounting	Line
Peak Pressure	350 bar
Max. Flow	100 lpm
Seal Kit Number	see chart

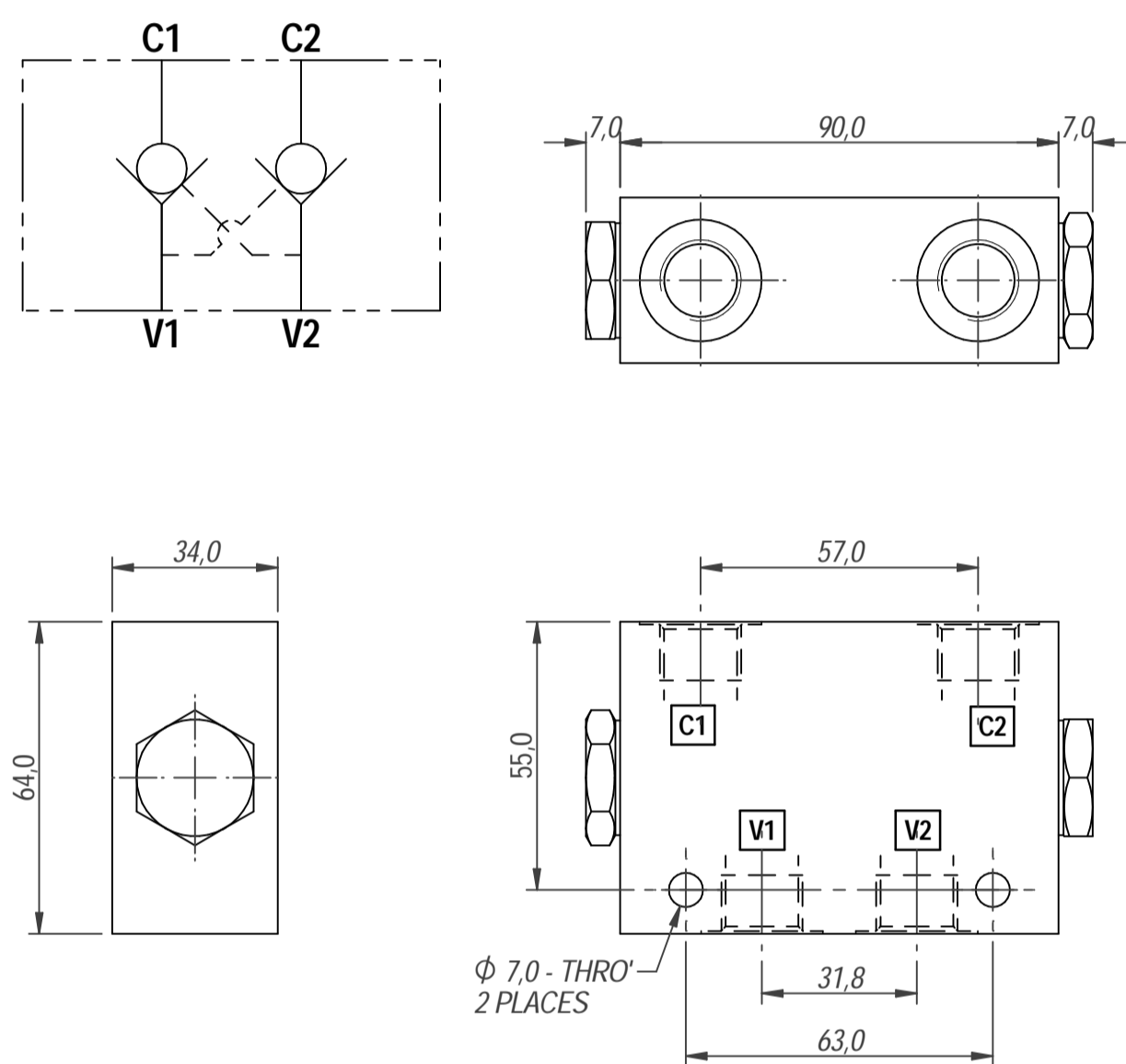
# Dual Pilot Check Valve

## ORDERING CODE

<b>DPC 06 3W 729</b>	
<p><b>BASIC CODE</b> DPC - Dual Pilot Check Valve</p> <p><b>SIZE</b> 06: Size 06 Valve 10: Size 10 Valve 12: Size 12 Valve</p>	<p><b>SUFFIX</b> 729 - SG Iron Body (350 bar)</p> <p><b>PORT SIZE</b> 3W: 3/8" BSP Ports (Size 06) 4W: 1/2" BSP Ports (Size 10) 6W: 3/4" BSP Ports (Size 12)</p>

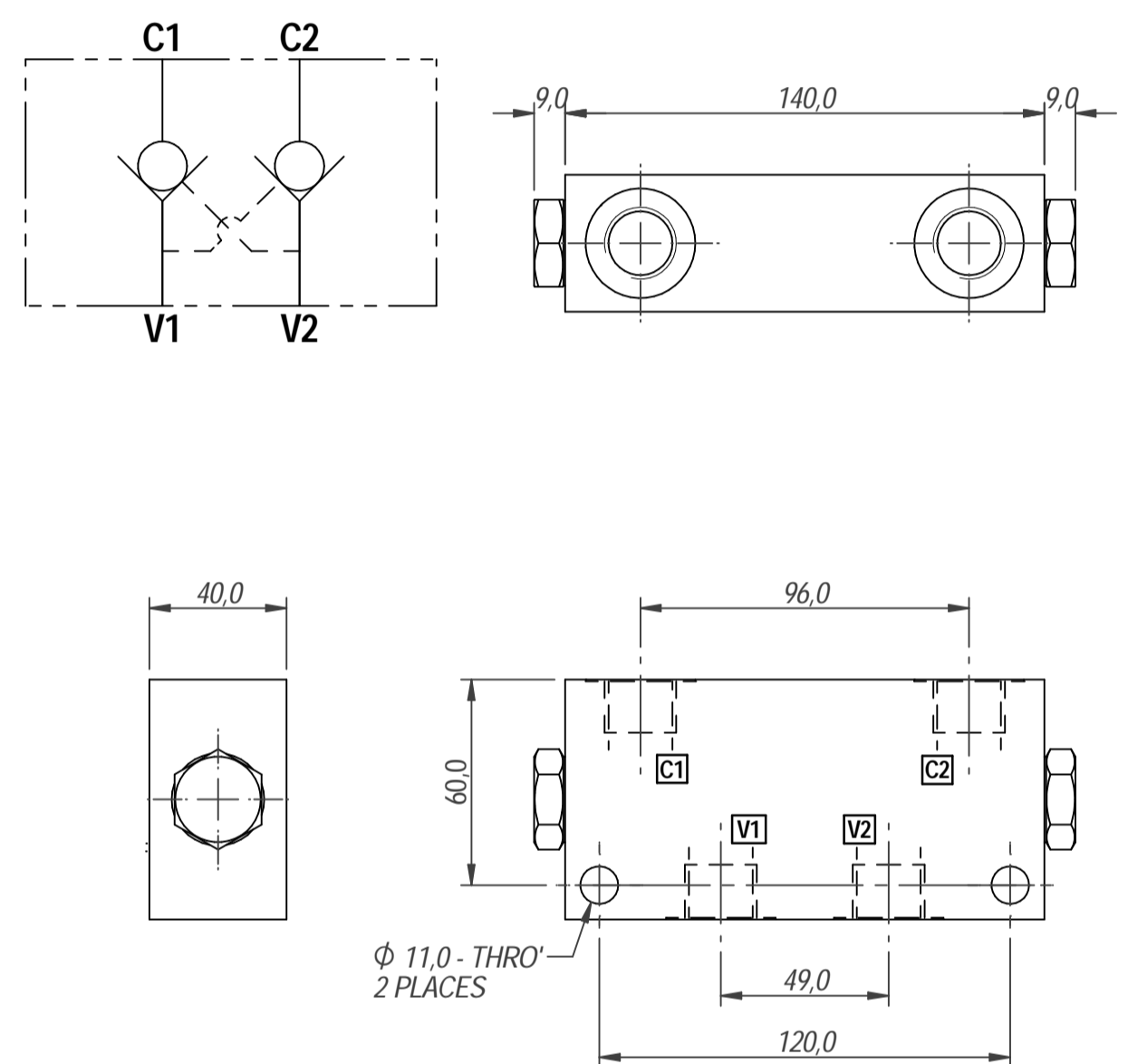
## DIMENSIONS

**BASIC CODE: DPC06 3W**  
ONLY Body Part Numbers  
Aluminium      SG Iron



## DIMENSIONS

**BASIC CODE: DPC10 4W**  
ONLY Body Part Numbers  
Aluminium      SG Iron



## DIMENSIONS

**BASIC CODE: DPC12 6W**  
ONLY Body Part Numbers  
Aluminium      SG Iron

