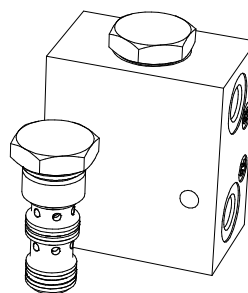
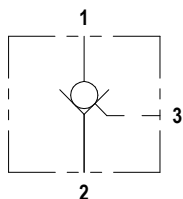




## PCC 06

### FLUID POWER SYMBOL



5

### APPLICATION

Pilot check valves allow flow to pass in one direction, with a low pressure drop, then prevent reverse flow until pilot pressure is applied. There are many applications for this valve type, the most common being to lock and hold a cylinder, or another hydraulic actuator, in position. The PCC06 is a small cartridge valve and is ideally suited for fitting directly into a cylinder, giving economy of installation, direct control of cylinder movement and ease of servicing.

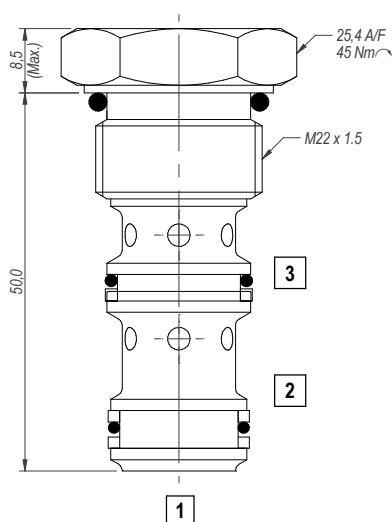
### OPERATION

Pressure on the valve port causes the poppet to lift against the spring force, allowing the flow to the cylinder port. Reverse flow is prevented by the poppet reseating. Pressure applied to the pilot port will overcome the cylinder port pressure and lift the poppet from its seat, allowing flow from the cylinder to valve port.

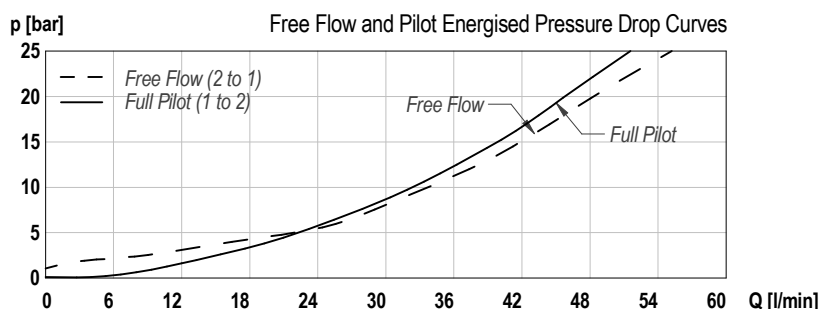
### FEATURES

Hardened and ground poppet gives excellent flow capability for valve size, positive sealing and long working life. Cartridge construction allows installation in actuators, manifold blocks and hydraulic Integrated Circuits. Seal on piston prevents leakage between Port 2 and Port 1.

### DIMENSIONS



### CHARACTERISTICS. Figures Based on: Oil Temp = 40°C, Viscosity = 40 cSt



### General Specifications

Description	pilot check valve
Construction	Screw-in Cartridge Construction for Cavity
Mounting	M22 x 1.5 screw thread for cartridge Threaded ports for housings.
Installation Position	any
Tightening Torque	45 Nm
Ambient Temp.	-20°C to +50°C
Cartridge Material	Working parts: Hardened, ground steel External surfaces: Zinc plated
Manifold Material	Aluminium or SG Iron
Cavity Number	NCS06/3
Weight	PCC06 Cartridge: 0.08 kg PCC06 2W: 0.37 kg

### Hydraulic Specifications

Hydraulic Fluid	Mineral oils. Contact sales office for other fluids.
Max. Pressure	210 bar
Rated Flow	35 lpm
Max. Contamination Level	BS5540/4 Class 18/16/13 (25µ nominal)
Viscosity Range	5 to 500 cSt
Leakage Flow	Less than 0.3 ml/min (5 dpm)
Hydraulic Fluid Temp.	-20°C to +90°C (Standard Seals)
Mounting	Line
Peak Pressure	210 bar
Max. Flow	50 lpm
Seal Kit Number	SKPCC06 (Nitrile)

# Pilot Check Valve

## ORDERING CODE

**PCC06 10 2W**

BASIC CODE  
PCC 06 - Cartridge/Line Body

DESIGN NUMBER  
1X - 10-19

PORT SIZE  
2W: 1/4 BSP PORTS  
OMIT FOR CARTRIDGE

## DIMENSIONS

**BASIC CODE: PCC06 10 2W**

**ONLY Body Part Numbers**

Aluminium 3/8" BSPP - Z10406      SG Iron 3/8" BSPP -

