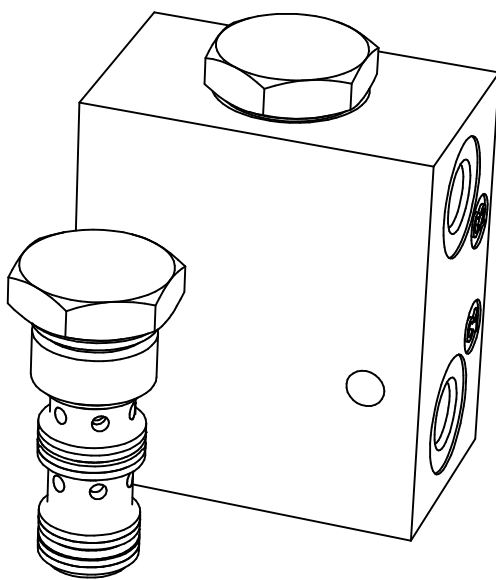
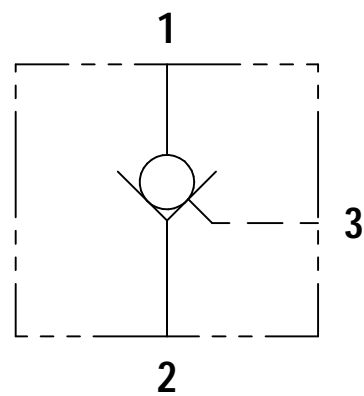


PCC 06

FLUID POWER SYMBOL



5

APPLICATION

Pilot check valves allow flow to pass in one direction, with a low pressure drop, then prevent reverse flow until pilot pressure is applied. There are many applications for this valve type, the most common being to lock and hold a cylinder, or another hydraulic actuator, in position. The PCC06 is a small cartridge valve and is ideally suited for fitting directly into a cylinder, giving economy of installation, direct control of cylinder movement and ease of servicing.

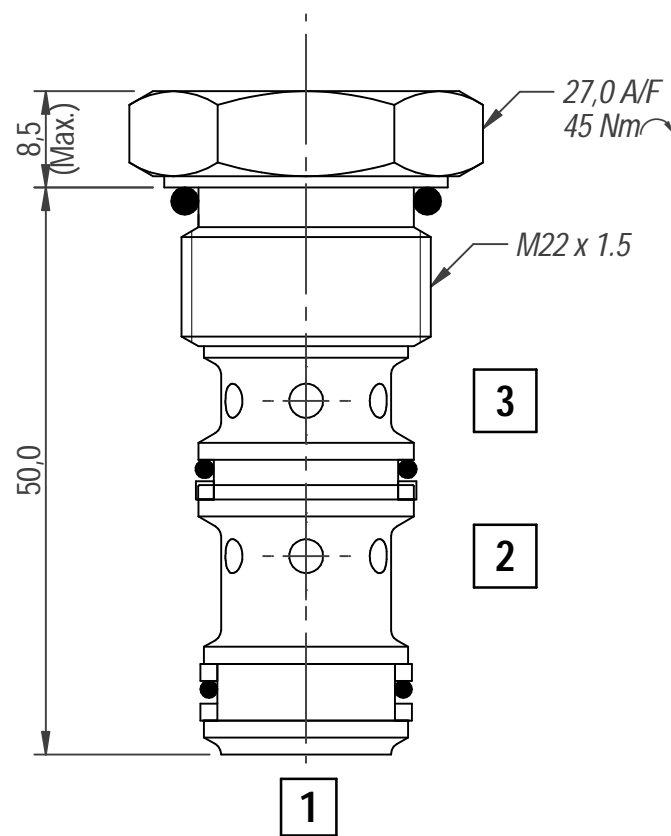
OPERATION

Pressure on the valve port causes the poppet to lift against the spring force, allowing the flow to the cylinder port. Reverse flow is prevented by the poppet reseating. Pressure applied to the pilot port will overcome the cylinder port pressure and lift the poppet from its seat, allowing flow from the cylinder to valve 2 and Port 1.

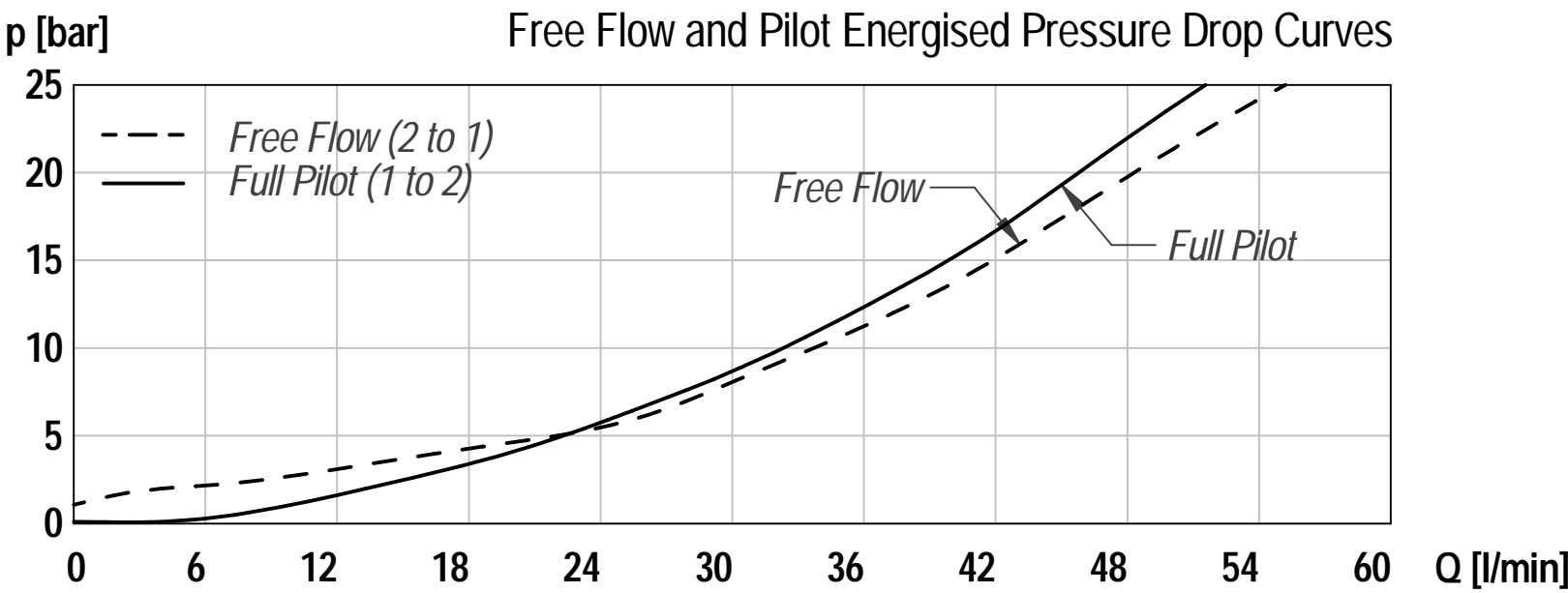
FEATURES

Hardened and ground poppet gives excellent flow capability for valve size, positive sealing and long working life. Cartridge construction allows installation in actuators, manifold blocks and hydraulic Integrated Circuits. Seal on piston prevents leakage between Port 2 and Port 1.

DIMENSIONS



CHARACTERISTICS. Figures Based on: Oil Temp = 40°C, Viscosity = 40 cSt



General Specifications

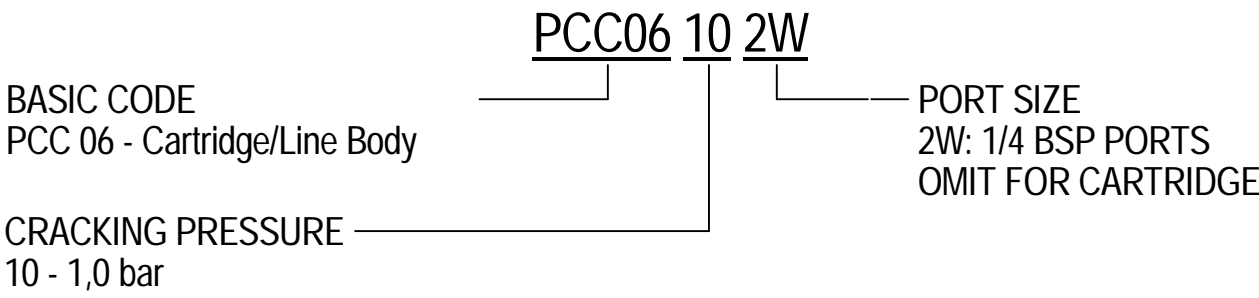
Description	pilot check valve
Construction	Screw-in Cartridge Construction for Cavity
Mounting	M22 x 1.5 screw thread for cartridge Threaded ports for housings.
Installation Position	any
Tightening Torque	45 Nm
Ambient Temp.	-20°C to +50°C
Cartridge Material	Working parts: Hardened, ground steel External surfaces: Zinc plated
Manifold Material	Aluminium or SG Iron
Cavity Number	NCS06/3
Weight	PCC06: 0.08 kg PCC06 2W: 0.37 kg

Hydraulic Specifications

Hydraulic Fluid	Mineral oils. Contact sales office for other fluids.
Max. Pressure	350 bar
Rated Flow	25 lpm
Max. Contamination Level	BS5540/4 Class 18/16/13 (25µ nominal)
Viscosity Range	5 to 500 cSt
Leakage Rate	0.3 ml/min (5 dpm)
Hydraulic Fluid Temp.	-20°C to +90°C (Standard Seals)
Mounting	Line
Peak Pressure	350 bar
Max. Flow	50 lpm
Seal Kit Number	Contact Sales Office

Pilot Check Valve

ORDERING CODE



DIMENSIONS

BASIC CODE: PCC06 10 2W
ONLY Body Part Numbers
Aluminium SG Iron
1/4" BSPP - Z10406 1/4" BSPP -

