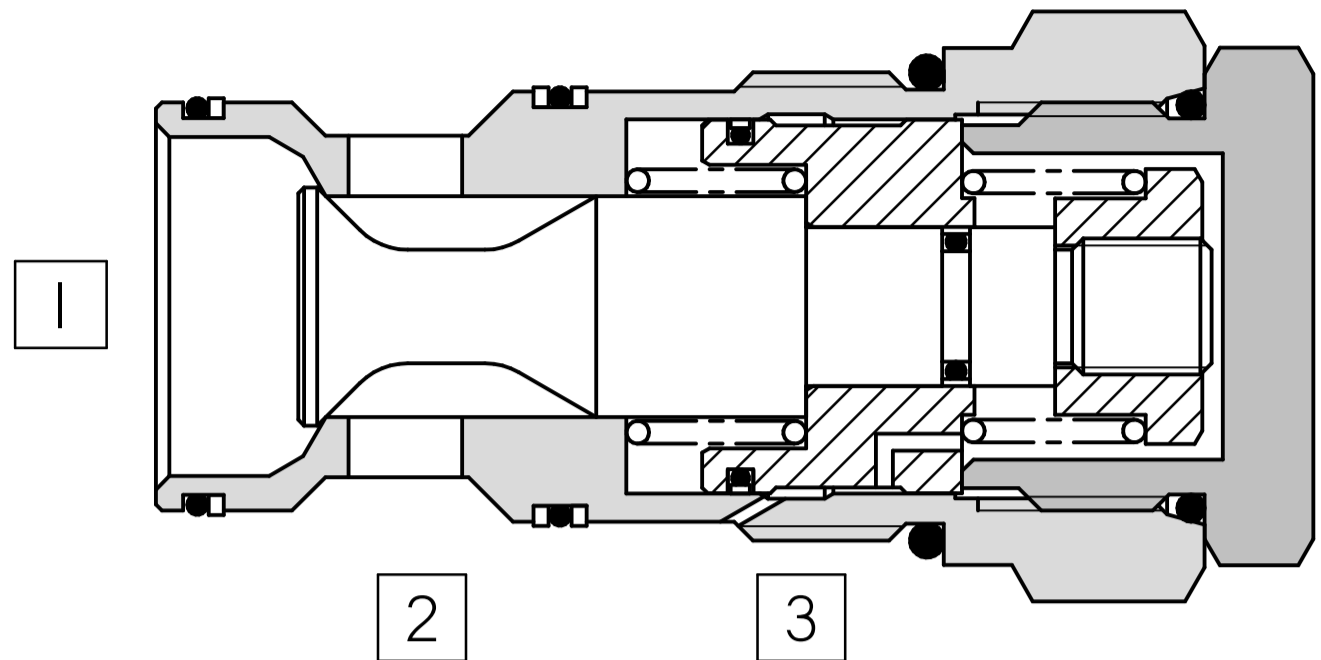
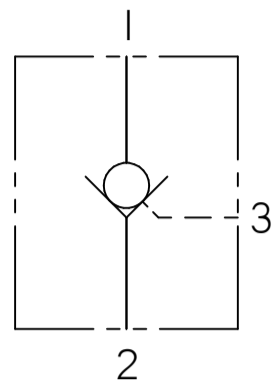
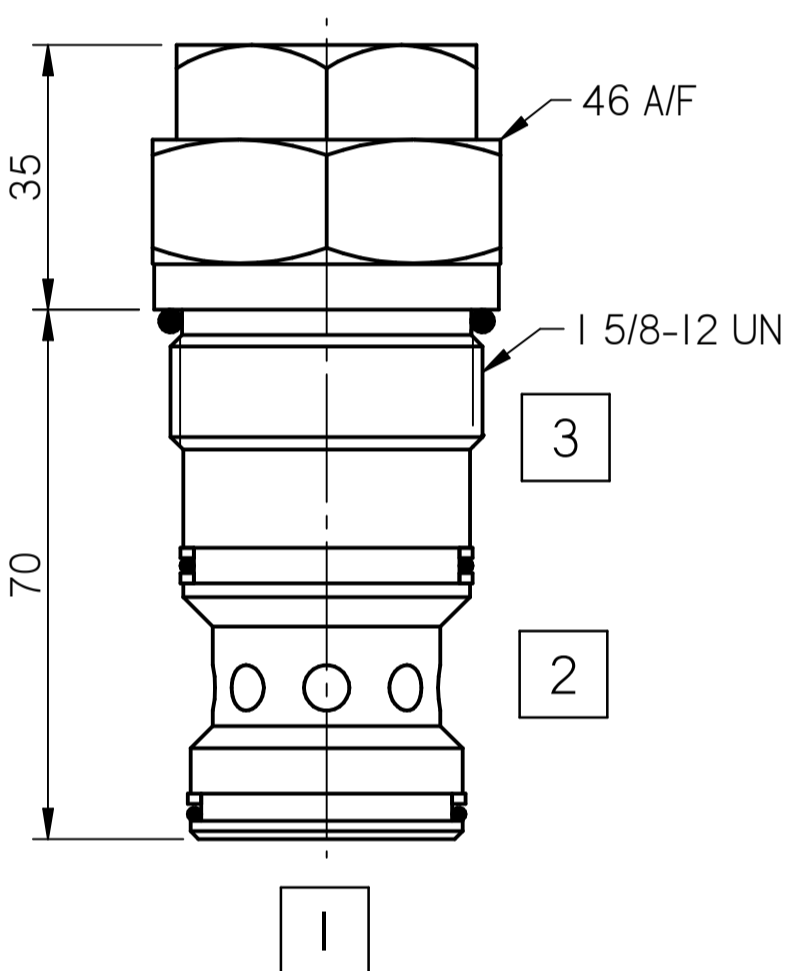


FLUID POWER SYMBOL



5



Application

Pilot check valves allow flow to pass in one direction, with a low pressure drop, then prevent reverse flow until pilot pressure is applied. There are many applications for this valve type, the most common being to lock and hold a cylinder, or another hydraulic actuator, in position. The CK350 is a cartridge valve ideally suited for fitting directly into a cylinder, giving economy of installation, direct control of cylinder movement and ease of servicing.

Operation

Pressure on the valve port causes the poppet to lift against the spring force, allowing the flow to the cylinder port.

Reverse flow is prevented by the poppet reseating. Pressure applied to the pilot port will overcome the cylinder port pressure and lift the poppet from its seat, allowing flow from the cylinder to valve port.

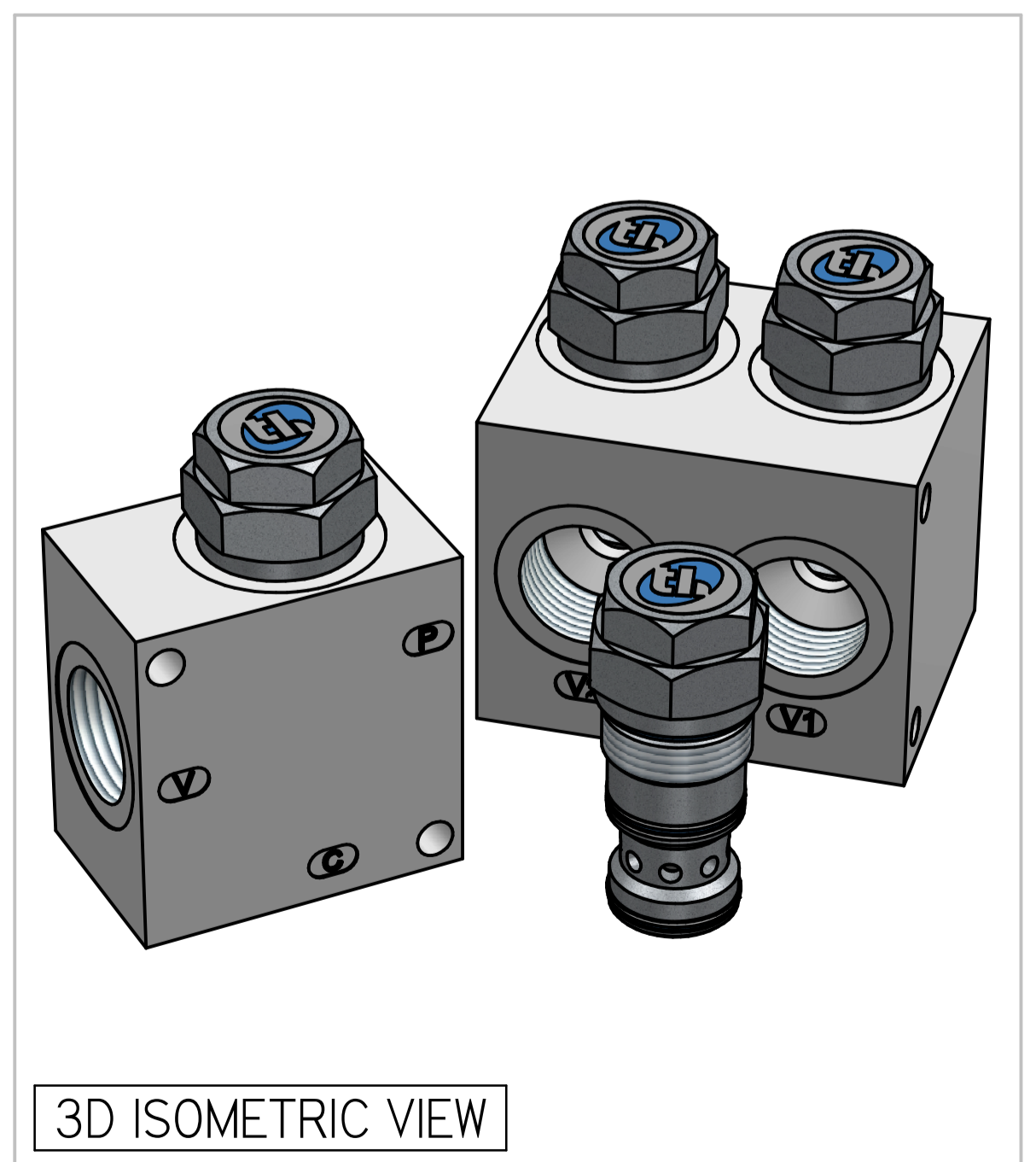
Features

Hardened and ground poppet gives excellent flow capability for valve size, positive sealing and long working life. Cartridge construction allows installation in actuators, manifold blocks and hydraulic Integrated Circuits. The valve fits the same cavity as the OSI350 overcenter valve. Seal on piston prevents leakage between Port 2 and Port 3.

Specifications

Figures based on: Oil Temp = 40°C Viscosity = 40 cSt

Max Flow	350 lpm
Max Pressure	350 bar
Pilot Ratio	3:1
Cartridge Material	Working parts : Hardened, ground steel External surfaces : Zinc plated
Weight (Cartridge only)	CK350: 0.280 kg
Cavity Number	TH6935 (Refer Cavities Section)
Manifold Material	Aluminium (upto 250 bar) Add Suffix '729' for SG Iron (350 bar)
Torque into Cavity	150 Nm
Mounting	Line
Seal Kit Number	SKCK350 (Nitrile) SKCK350V (Viton®)
Filtration Level	BS5540/4 Class 18/13 (25µ nominal)
Operating Temp	-20°C to +90°C (Standard Seals)
Leakage	Less than 0.3 millilitres/min (5 dpm)
Viscosity Range	5 to 500 cSt



Where measurements are critical request certified drawings. We reserve the right to change specifications without notice.

TO ORDER

CK350 10W N 3

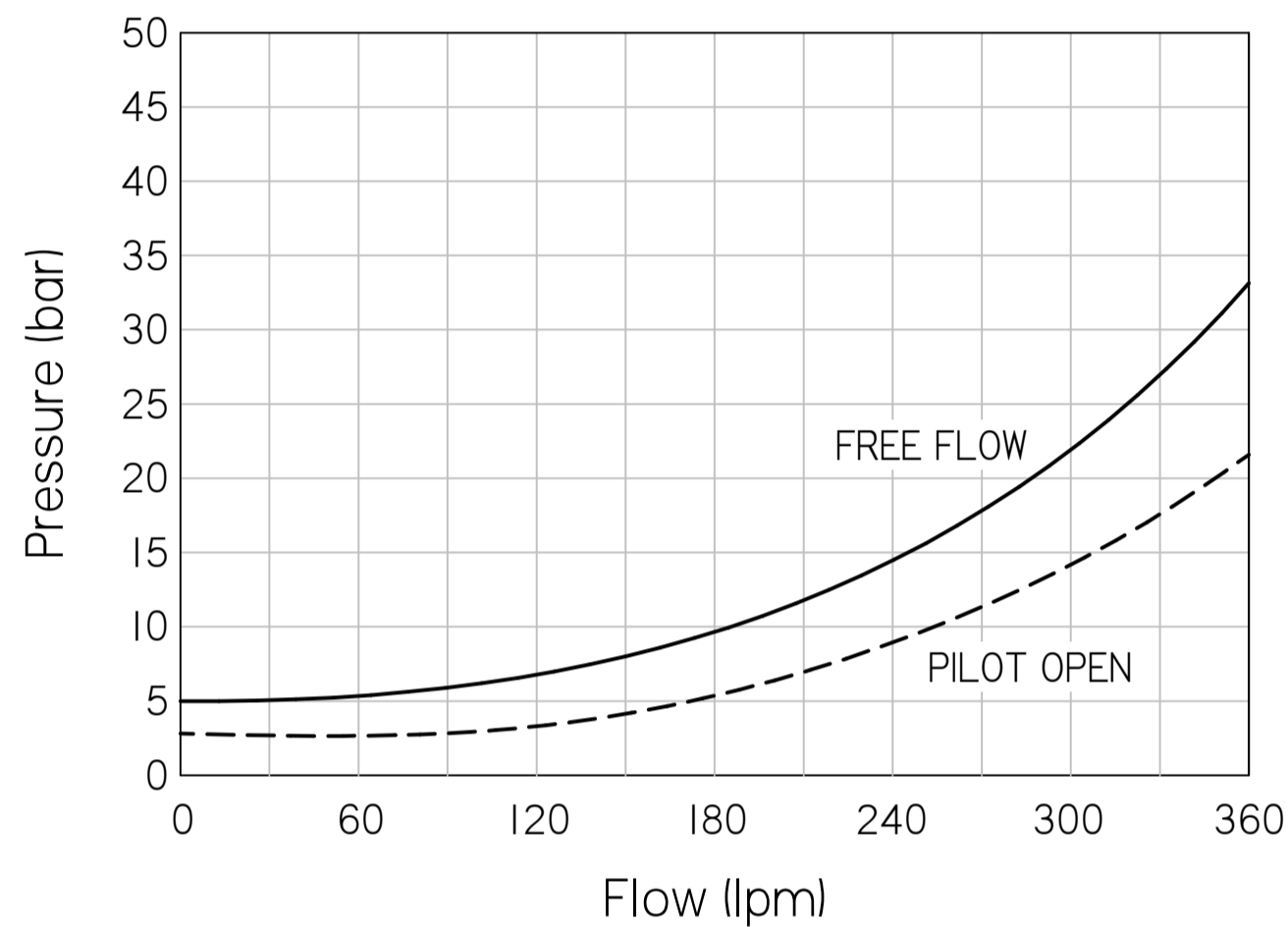
BASIC CODE
CK 350: SINGLE PILOT CHECK
CK2 350: DUAL PILOT CHECK

PORT SIZE
10W: 1-1/4 BSP PORTS
OMIT FOR CARTRIDGE

PILOT RATIO
3: RATIO OF 3:1

SEAL KIT
N: NITRILE
V: VITON

PRESSURE CHARACTERISTICS



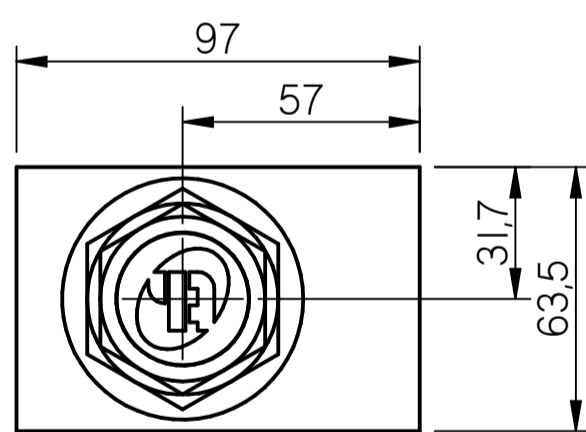
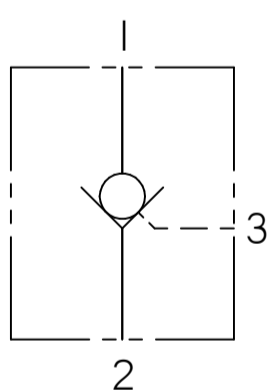
5

COMPLETE VALVE 1-1/4" BSP PORTS

BASIC CODE: CK350 10W

ONLY Body Part Numbers (BSP)

Aluminium	SG Iron
1.1/4" Z10349	1.1/4" Z10386S

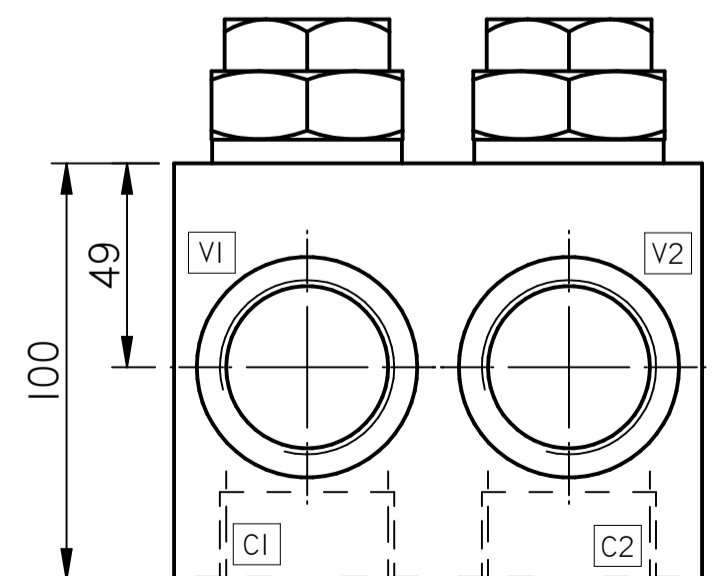
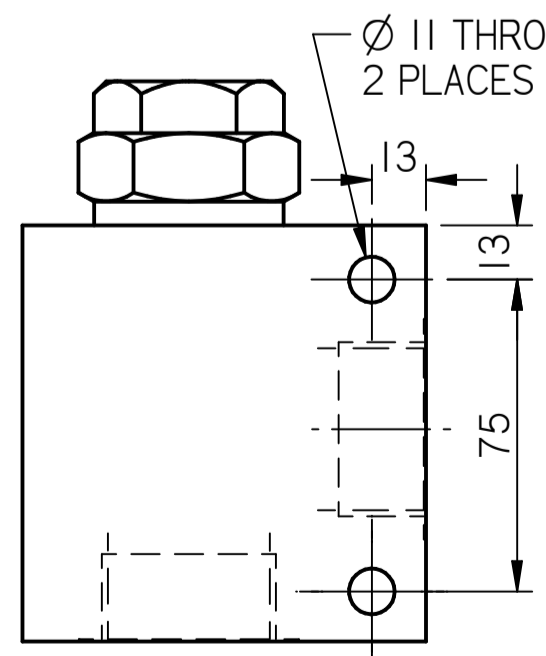
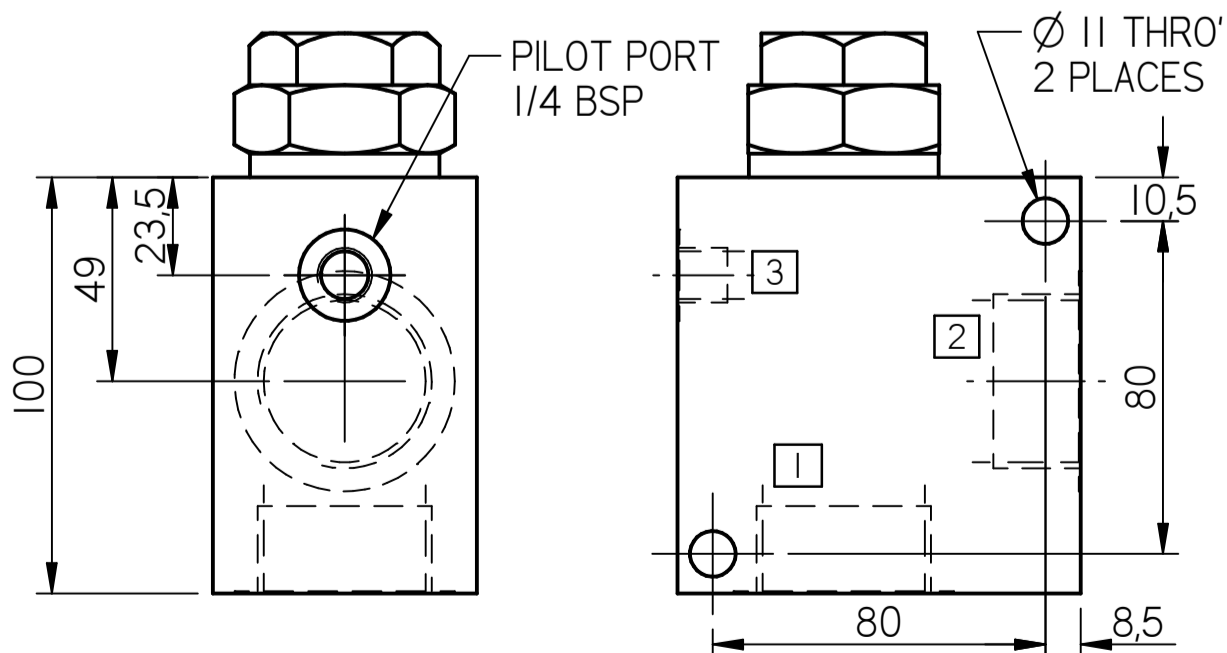
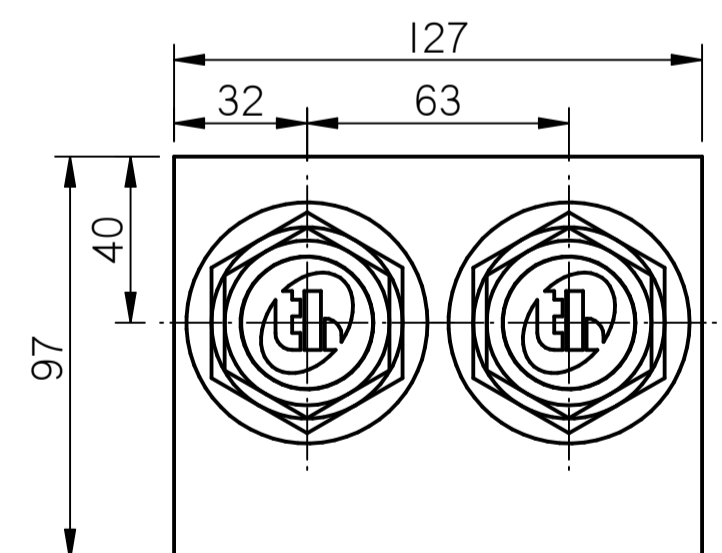
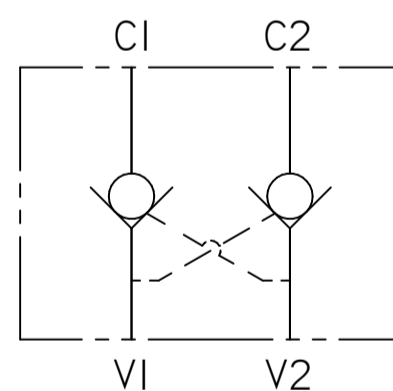


COMPLETE VALVE 1-1/4" BSP PORTS

BASIC CODE: CK2 350 10W (INTERNAL CROSS PILOT)

ONLY Body Part Numbers (BSP)

Aluminium	SG Iron
1.1/4" Z10161	1.1/4" Z10161S



Where measurements are critical request certified drawings. We reserve the right to change specifications without notice.