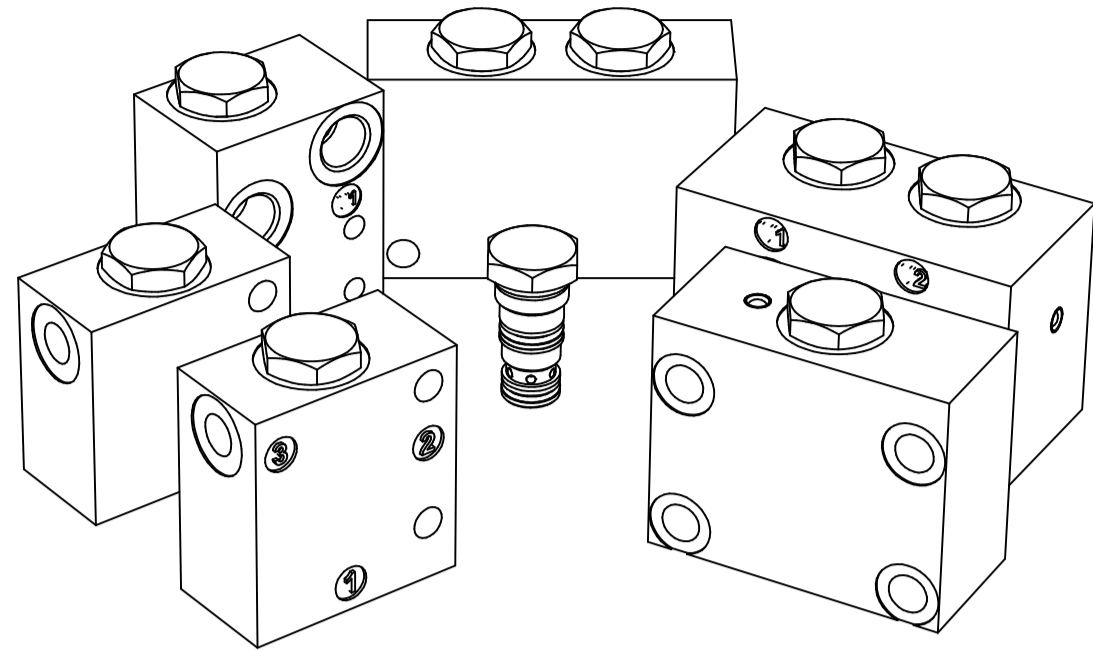
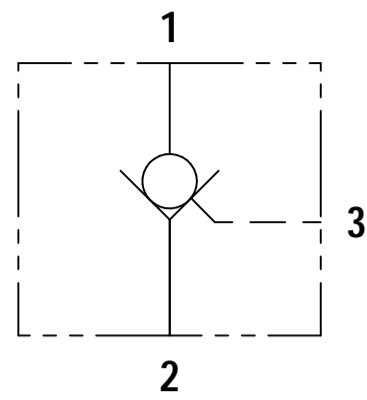


# CK 35

## FLUID POWER SYMBOL



5

## APPLICATION

Pilot check valves allow flow to pass in one direction, with a low pressure drop, then prevent reverse flow until pilot pressure is applied. There are many applications for this valve type, the most common being to lock and hold a cylinder, or another hydraulic actuator, in position. The CK35 is a small cartridge valve and is ideally suited for fitting directly into a cylinder, giving economy of installation, direct control of cylinder movement and ease of servicing.

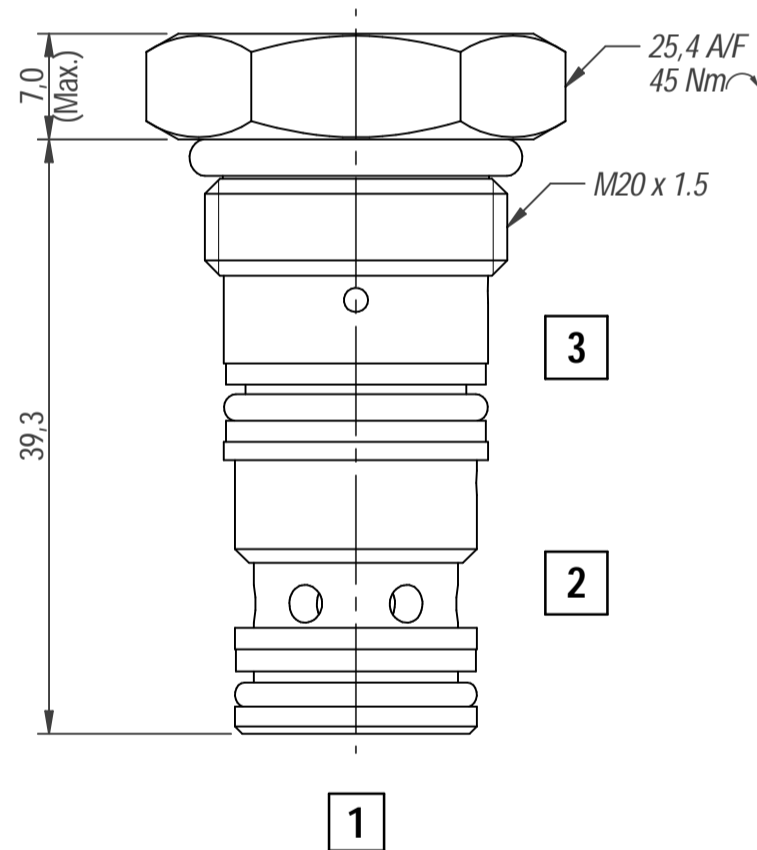
## OPERATION

Pressure on the valve port causes the poppet to lift against the spring force, allowing the flow to the cylinder port. Reverse flow is prevented by the poppet reseating. Pressure applied to the pilot port will overcome the cylinder port pressure and lift the poppet from its seat, allowing flow from the cylinder to valve port.

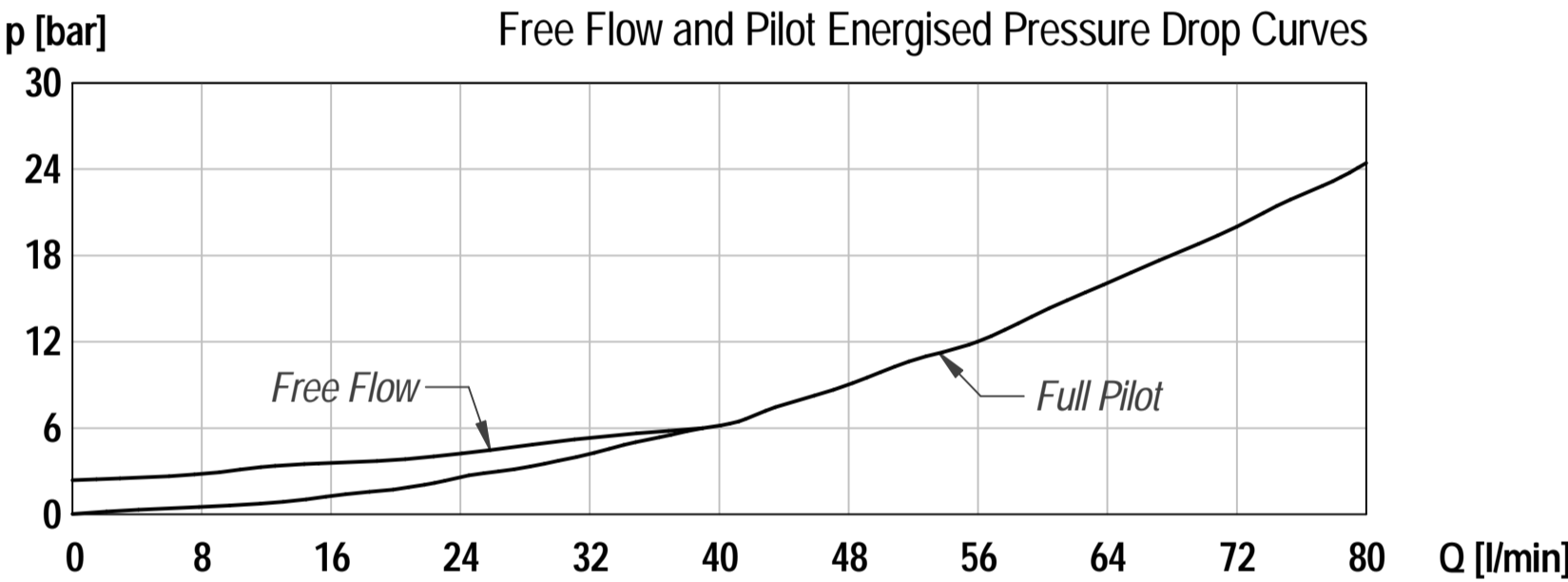
## FEATURES

Hardened and ground poppet gives excellent flow capability for valve size, positive sealing and long working life. Cartridge construction allows installation in actuators, manifold blocks and hydraulic Integrated Circuits. The valve fits the same cavity as the counterbalance valve. Seal on piston prevents leakage between Port 2 and Port 3.

## DIMENSIONS



## CHARACTERISTICS. Figures Based on: Oil Temp = 40°C, Viscosity = 40 cSt



## General Specifications

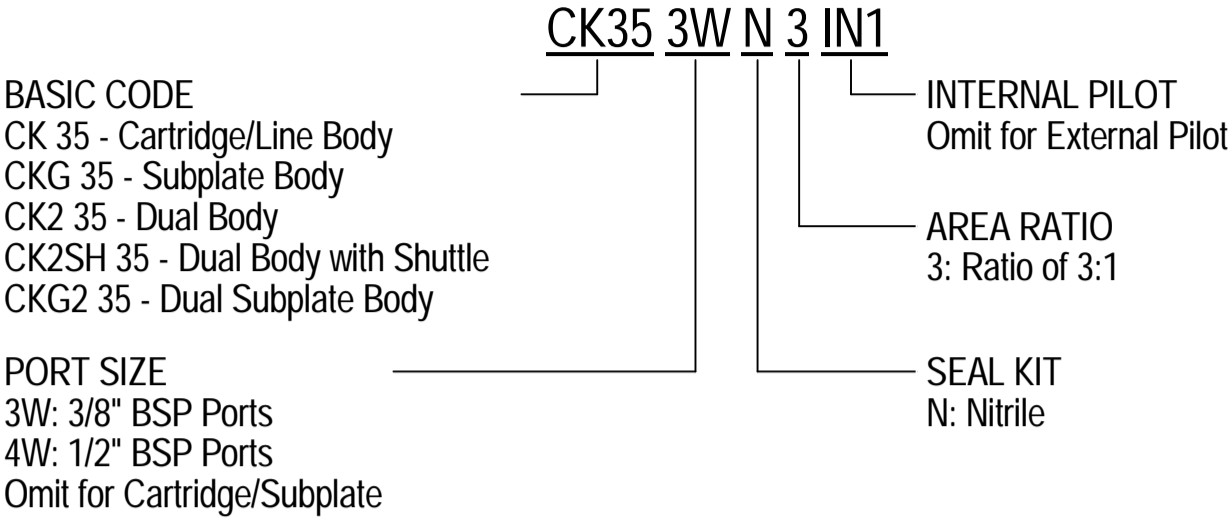
Description	pilot check valve
Construction	Screw-in Cartridge Construction for Cavity
Mounting	M20 x 1.5 screw thread for cartridge Threaded ports for housings.
Installation Position	any
Tightening Torque	45 Nm
Ambient Temp.	-20°C to +50°C
Cartridge Material	Working parts: Hardened, ground steel External surfaces: Zinc plated
Manifold Material	Aluminium or SG Iron
Cavity Number	TH6610 (Refer Cavities Section)
Weight	CK35 Cartridge: 0.08 kg CK 35 3W N 3: 0.37 kg CK 35 3W N 3 IN1: 0.42 kg CK2 35 3W N 3: 0.67 kg CKG 35 3W N 3: 1.52 kg CKG2 35 3W N 3: 0.88 kg

## Hydraulic Specifications

Hydraulic Fluid	Mineral oils. Contact sales office for other fluids.
Max. Pressure	350 bar
Rated Flow	35 lpm
Max. Contamination Level	BS5540/4 Class 18/16/13 (25µ nominal)
Viscosity Range	5 to 500 cSt
Leakage Flow	Less than 0.3 ml/min (5 dpm)
Hydraulic Fluid Temp.	-20°C to +90°C (Standard Seals)
Mounting	Line/Subplate
Peak Pressure	400 bar
Max. Flow	60 lpm
Seal Kit Number	SKCK35 (Nitrile)
Viscosity Range	5 to 500 cSt

# Pilot Check Valve

## ORDERING CODE

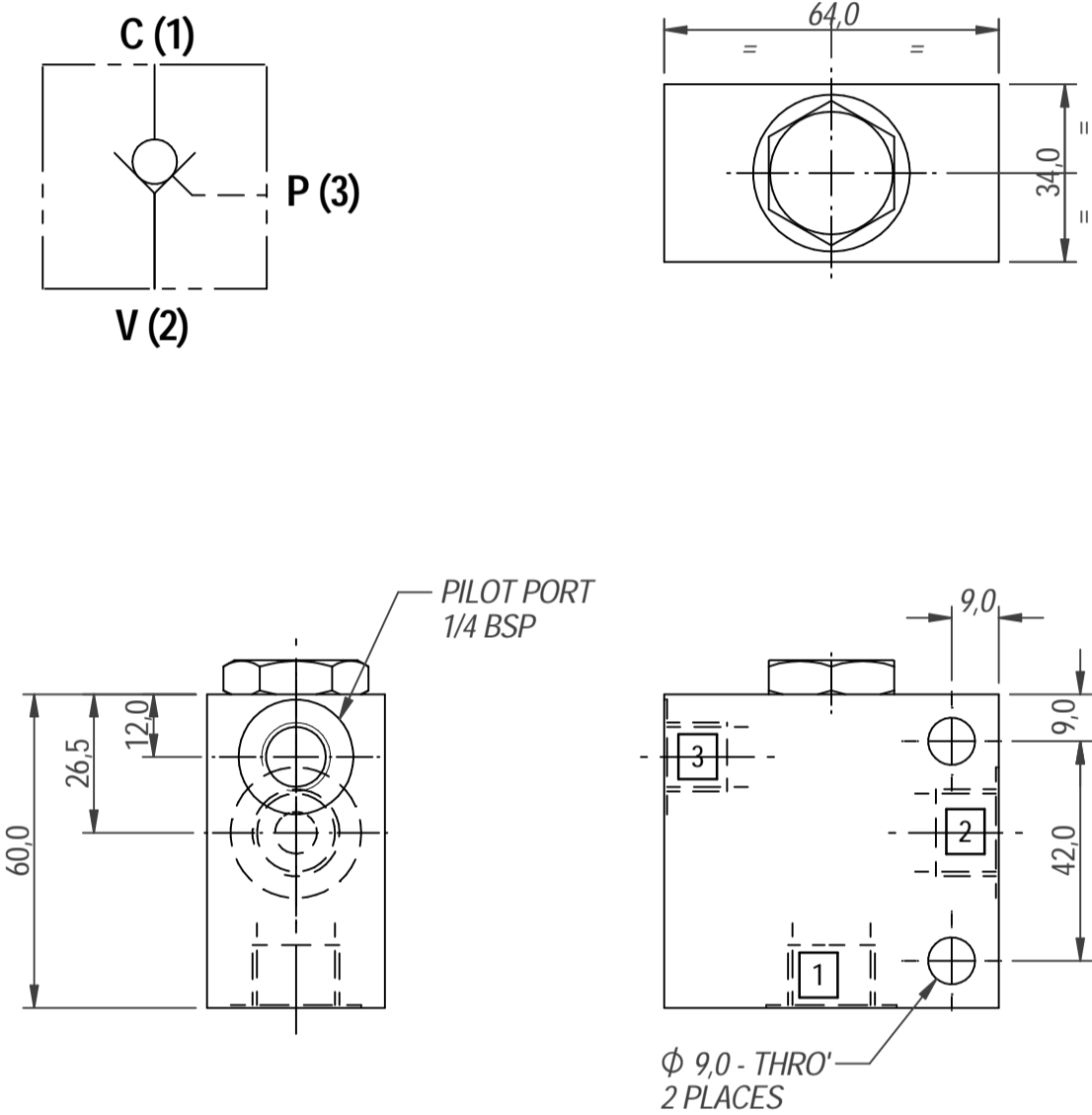


## DIMENSIONS

BASIC CODE: CK35 3W N 3

ONLY Body Part Numbers

Aluminium SG Iron  
3/8" BSPP - Z10386 3/8" BSPP - Z10386S

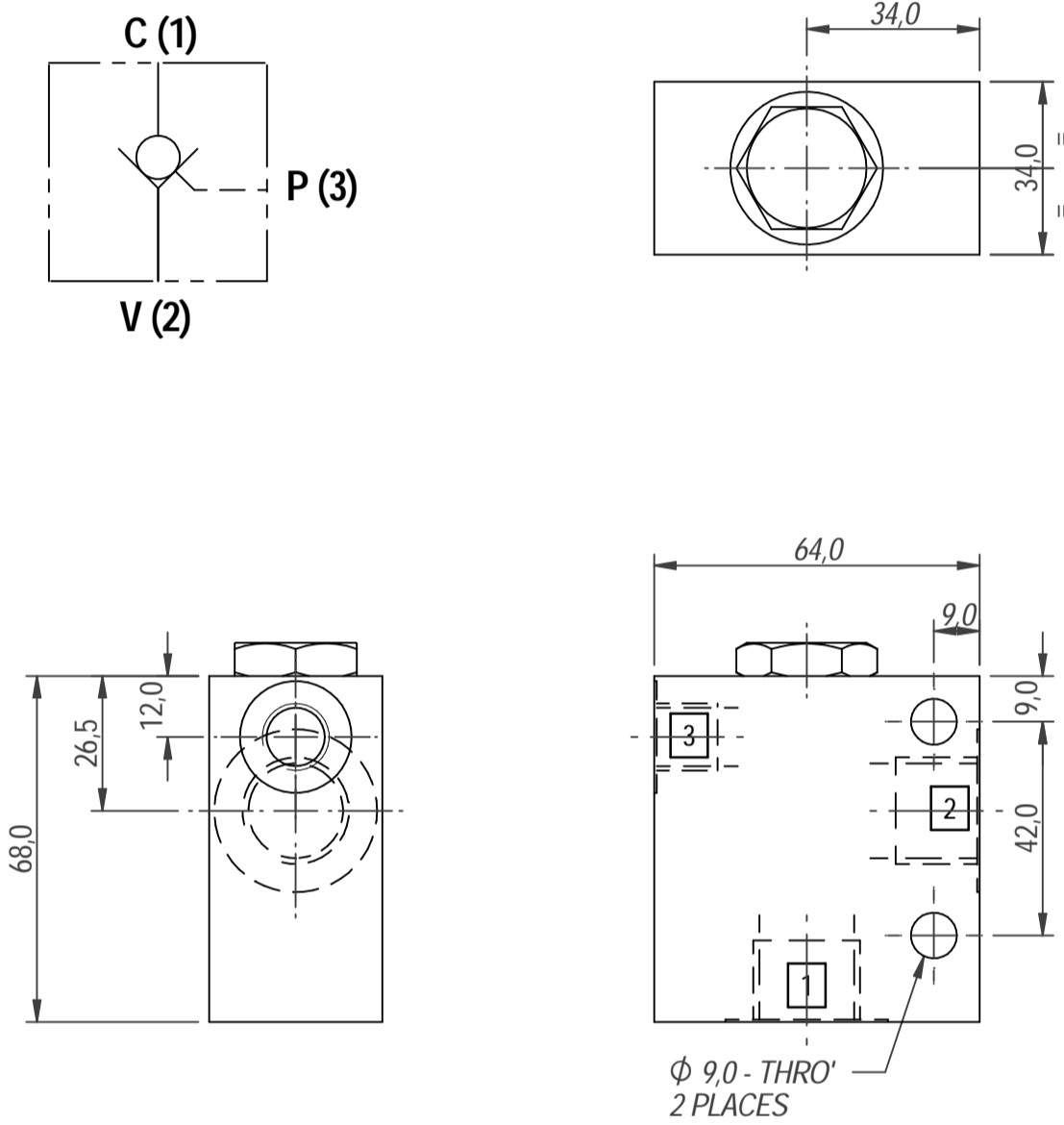


## DIMENSIONS

BASIC CODE: CK35 4W N 3

ONLY Body Part Numbers

Aluminium SG Iron  
1/2" BSPP - Z10435 1/2" BSPP - Z10435S

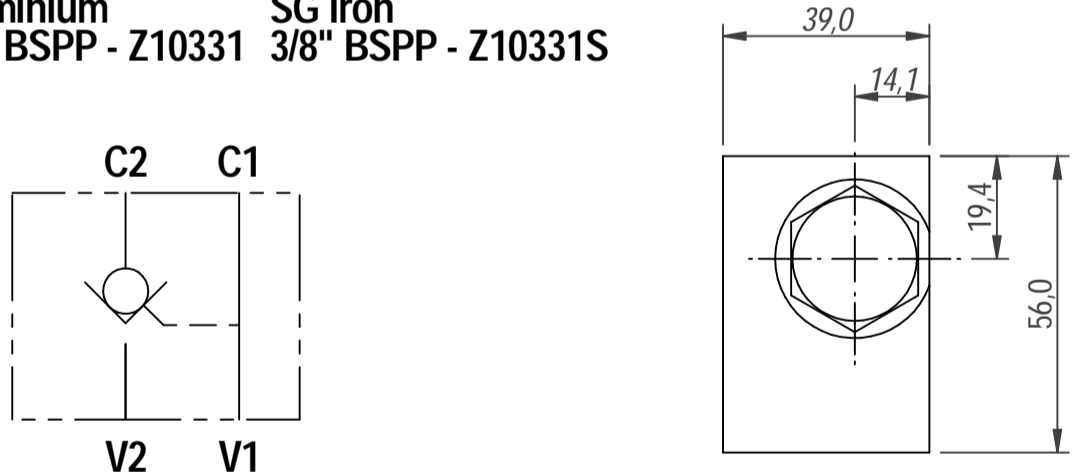


## DIMENSIONS

BASIC CODE: CK35 3W N 3 IN1 (Internal Pilot)

ONLY Body Part Numbers

Aluminium SG Iron  
3/8" BSPP - Z10331 3/8" BSPP - Z10331S

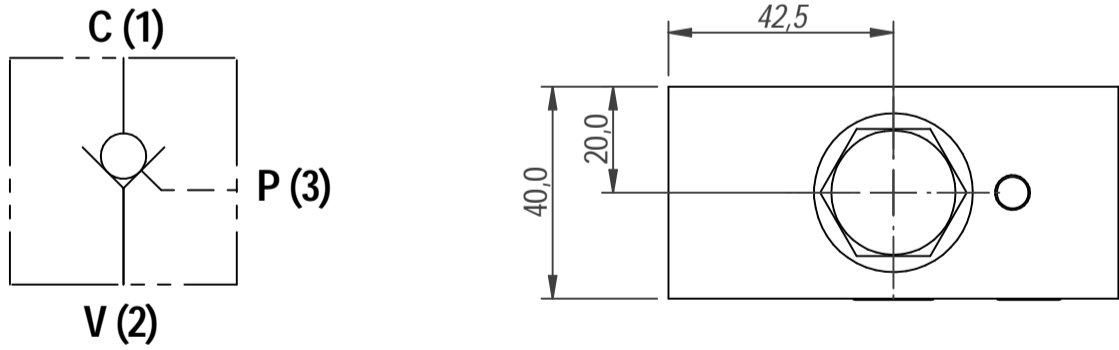


## DIMENSIONS

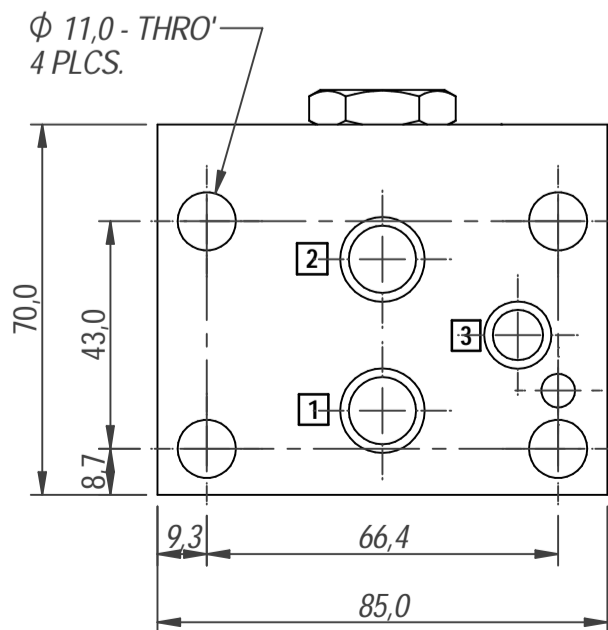
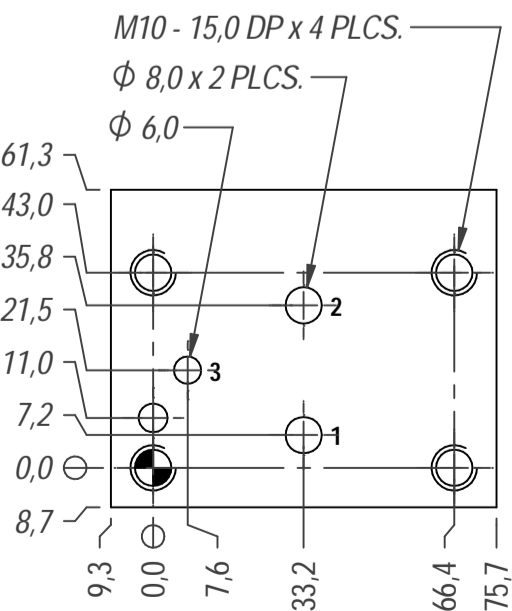
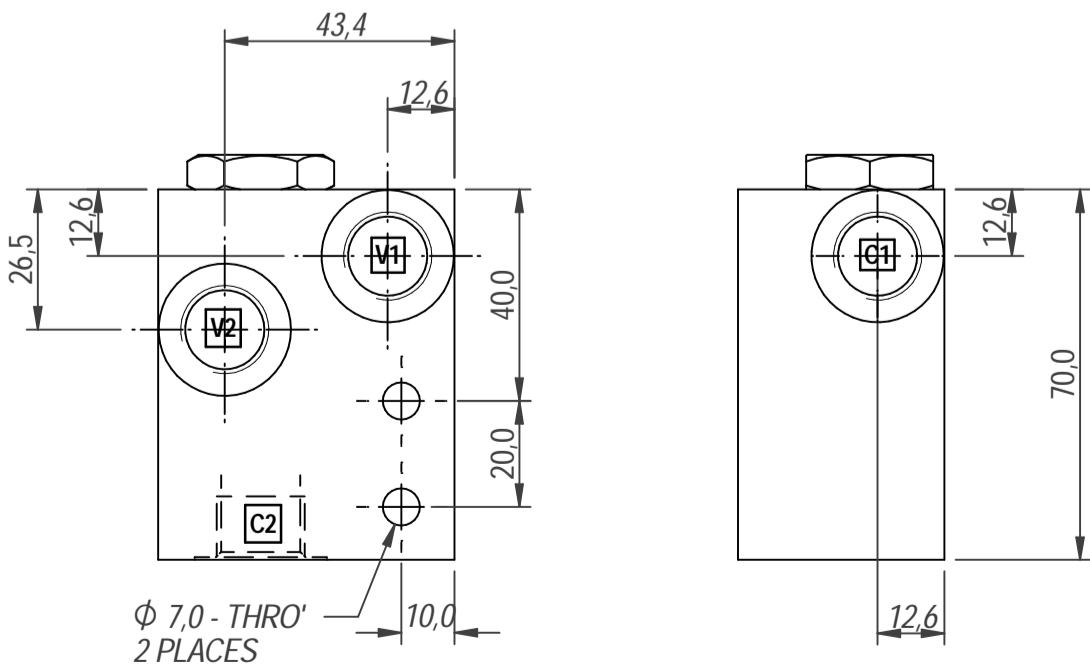
BASIC CODE: CKG 35 N 3

ONLY Body Part Numbers

Aluminium SG Iron  
Subplate - Z10380



## SUBPLATE DIMENSIONS



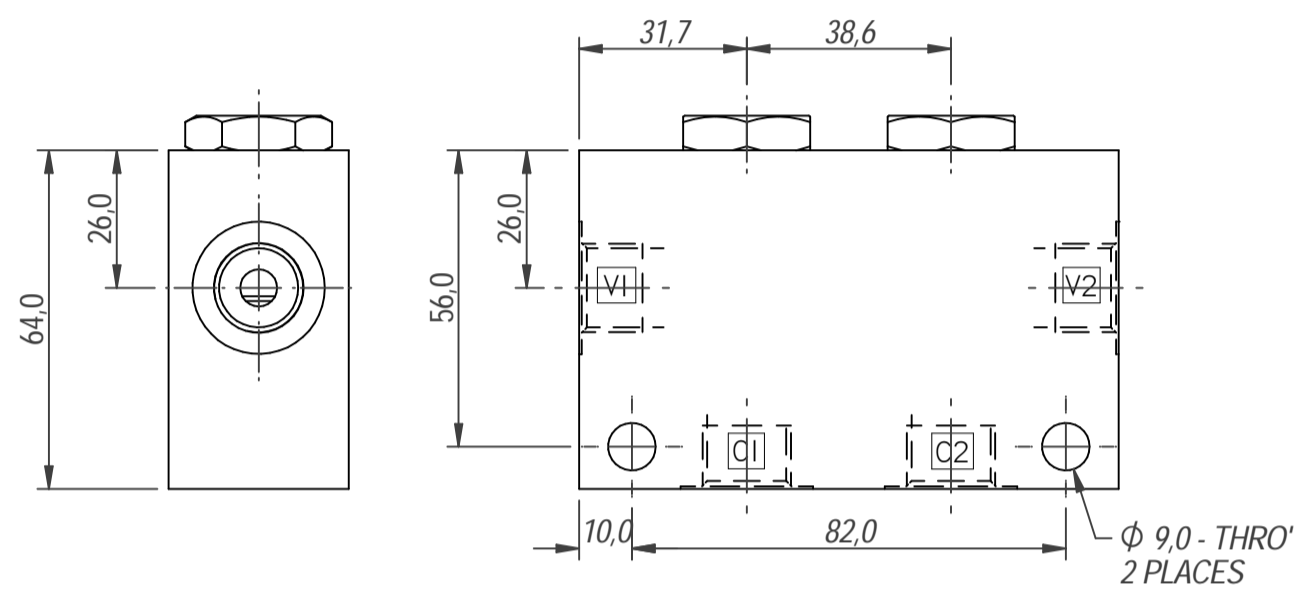
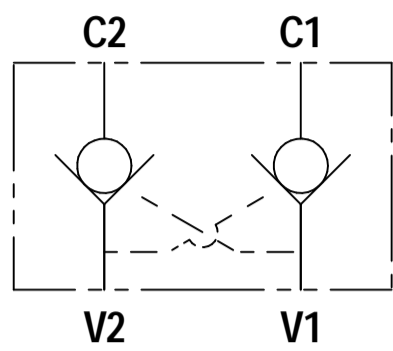
## CK 35

### DIMENSIONS

BASIC CODE: CK2 35 3W N 3

ONLY Body Part Numbers

Aluminium 3/8" BSPP - Z10045 SG Iron 3/8" BSPP - Z10045S

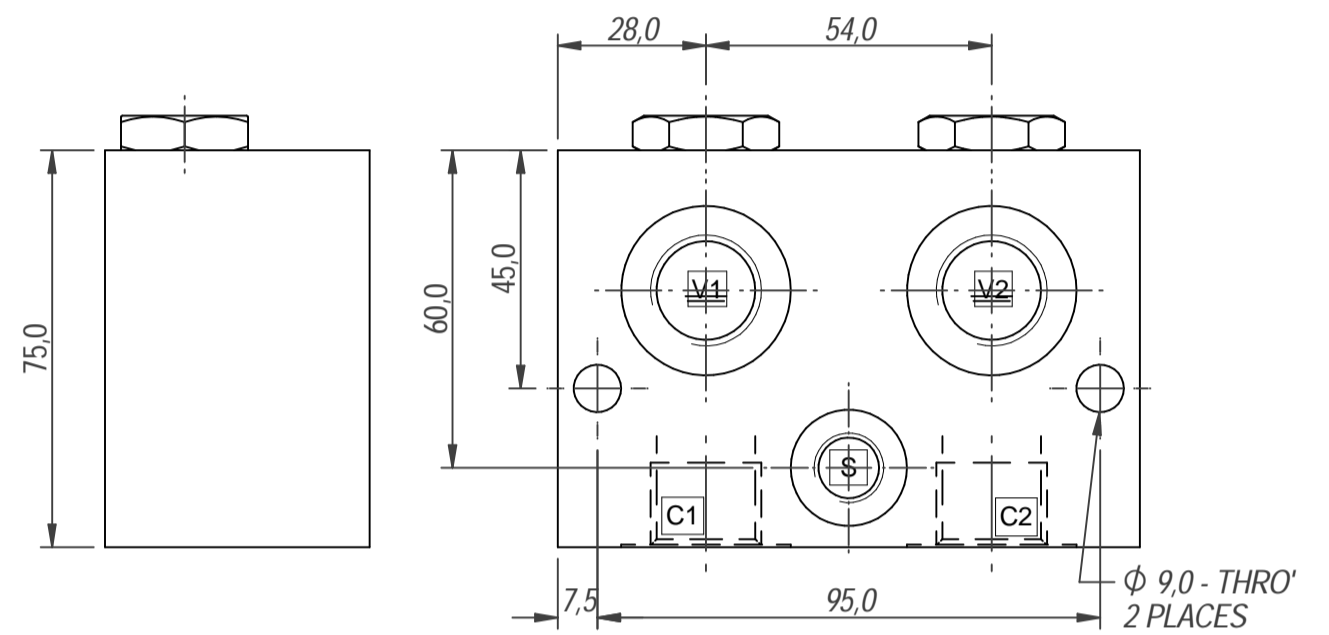
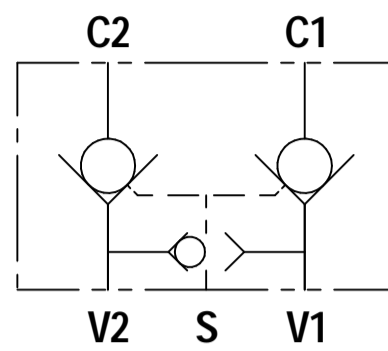


### DIMENSIONS

BASIC CODE: CK2SH 35 4W N 3

ONLY Body Part Numbers

Aluminium 3/8" BSPP - Z10045 SG Iron 3/8" BSPP - Z10045S

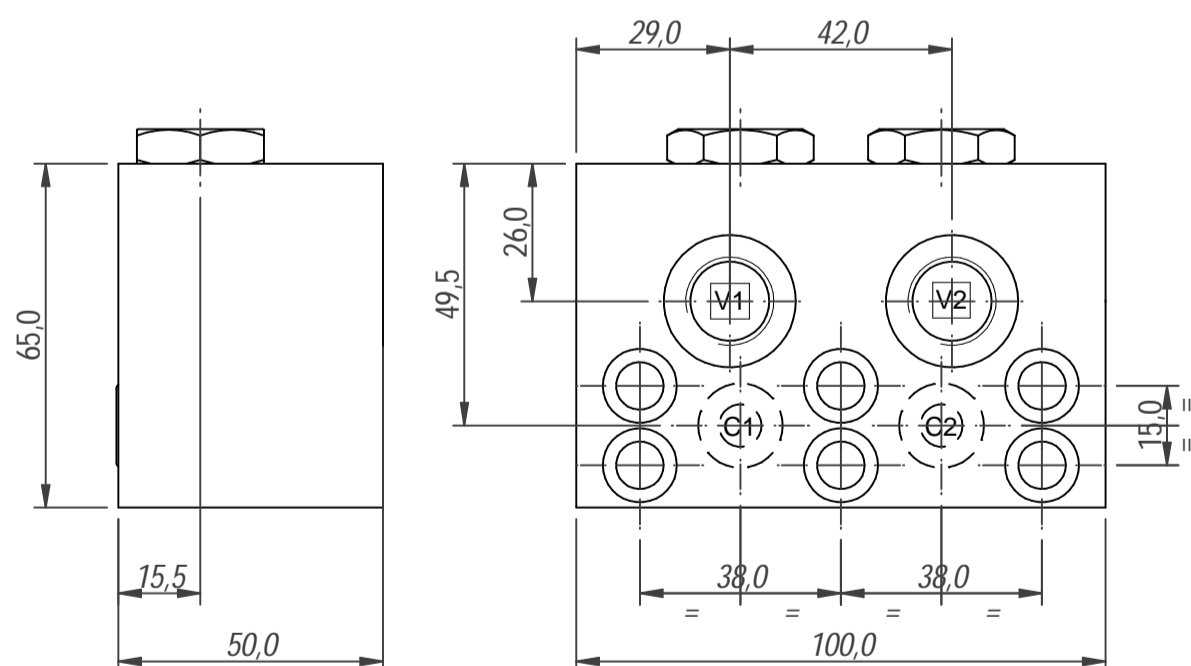
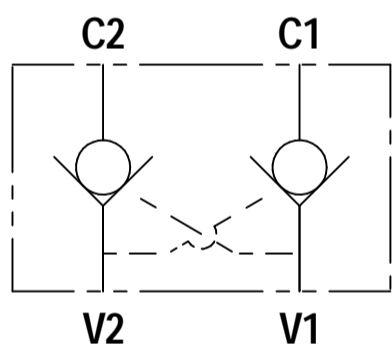


### DIMENSIONS

BASIC CODE: CKG2 35 3W N 3

ONLY Body Part Numbers

Aluminium 3/8" BSPP - Z10045 SG Iron 3/8" BSPP - Z10045S



Blank Page



FLUID POWER SYMBOL

5

DIMENSIONS

CHARACTERISTICS. Figures Based on: Oil Temp = 40°C, Viscosity = 40 cSt





Blank Page