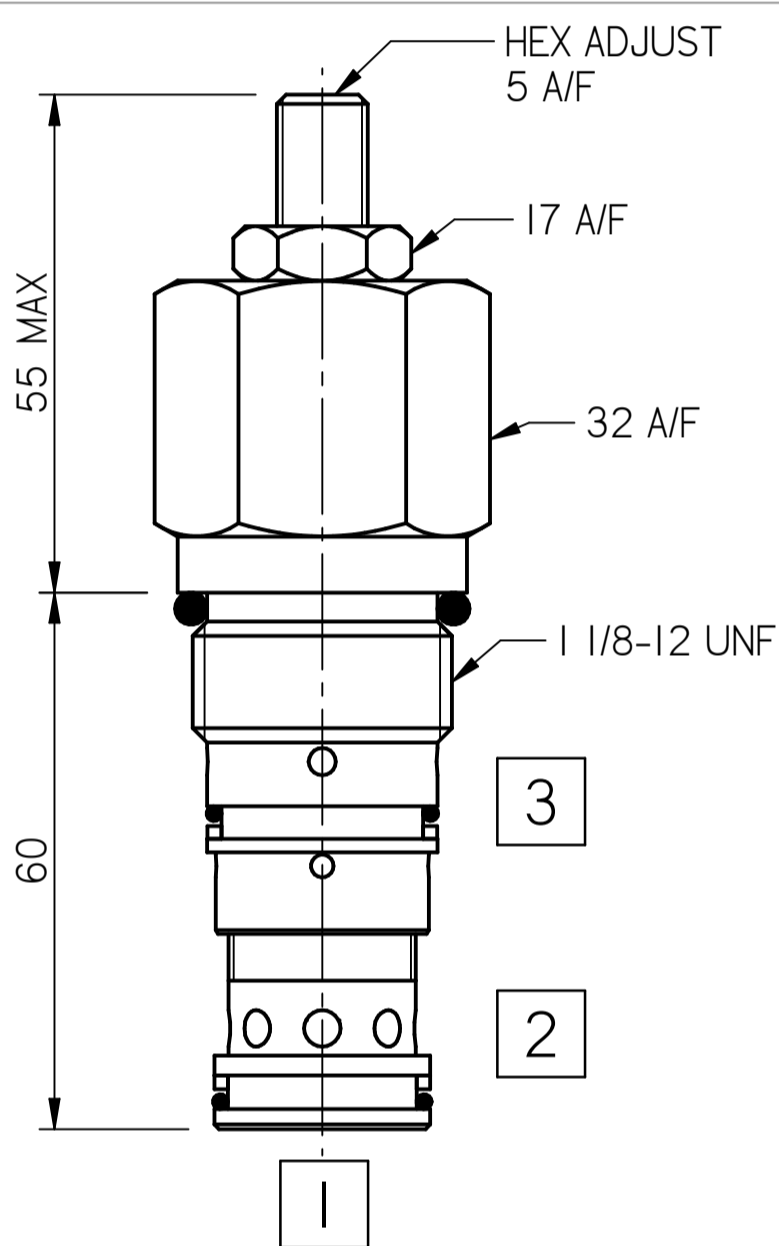
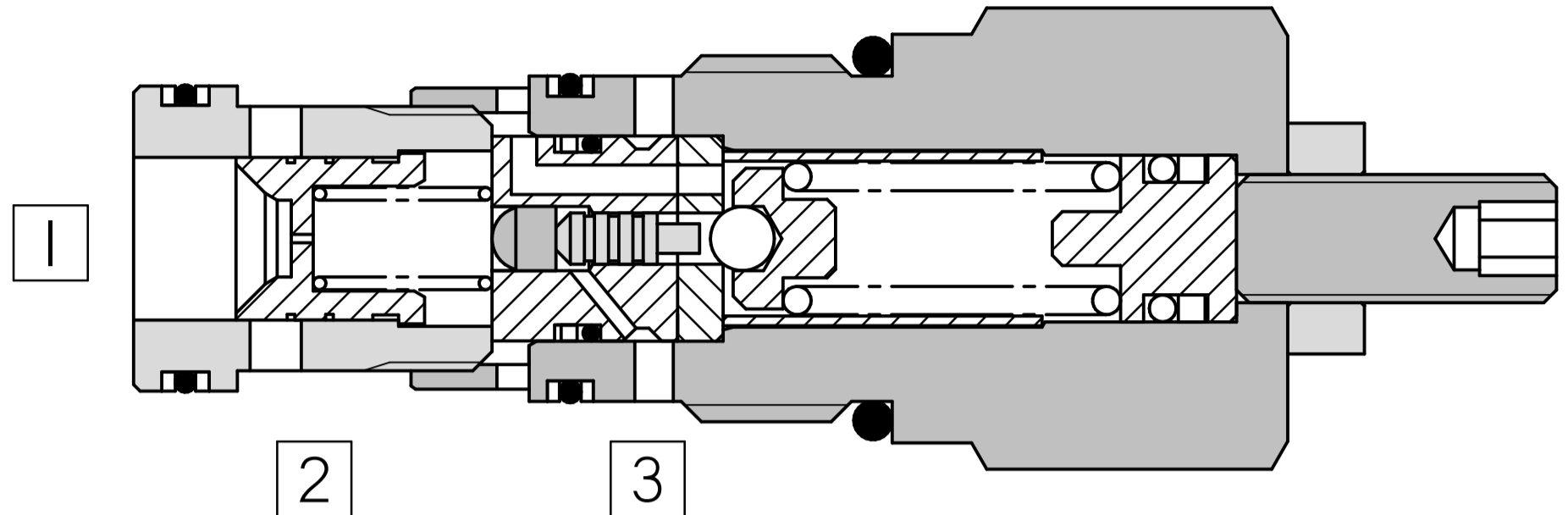
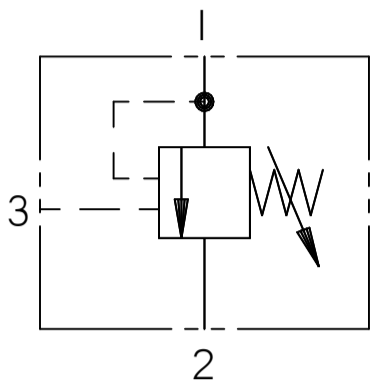


FLUID POWER SYMBOL



Application

Unloading valves are used to unload the pump to tank when the pressure in a separate part of the circuit reaches a preset level. The most common application is to maintain pressure in an accumulator which may be used in an emergency to operate an essential hydraulic function.

Operation

Inlet pressure acts on Port 1 and the system pressure in port 3 acts on the pilot port of the cartridge. When the pressure rises to the valve setting, the relief section opens and the system pressure acts on the pilot piston to hold the valve in the open position. The ratio between the pilot piston and seat

diameter to the relief pilot section ensures that the valve will be maintained in the fully open position until the system pressure drops to approximately 85% of the unload pressure

Features

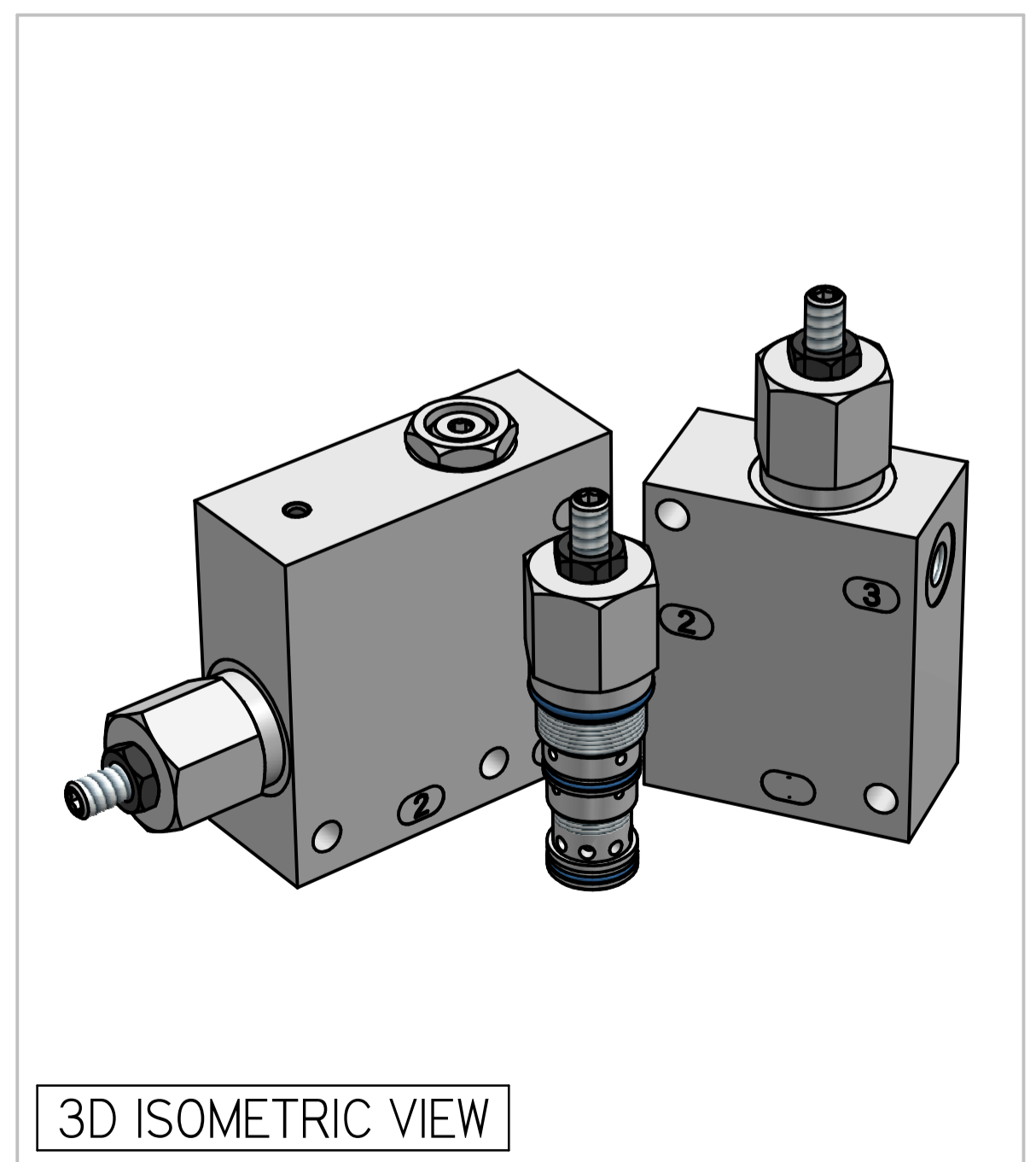
Valve bodies are supplied as line bodies for the use in accumulator circuits. These include a built in check valve which provides with an internal connection to the valve pilot port.

10

Specifications

Figures based on: Oil Temp = 40°C Viscosity = 40 cSt

Rated Flow	80 lpm
Max Pressure	350 bar
Cartridge Material	Working parts : Hardened, ground steel External surfaces : Zinc plated
Weight (Cartridge only)	UL65: 0.400 kg
Cavity Number	TH3146 (Refer Cavities Section)
Manifold Material	Aluminium (upto 250 bar) Add Suffix '729' for SG Iron (350 bar)
Torque into Cavity	75 Nm
Mounting	Line
Seal Kit Number	SKUL65 (Nitrile) SKUL65V (Viton®)
Filtration Level	BS5540/4 Class I8/I3 (25µ nominal)
Operating Temp	-20°C to +90°C (Standard Seals)
Leakage	Less than 35 millilitres/min
Viscosity Range	5 to 500 cSt



3D ISOMETRIC VIEW

Where measurements are critical request certified drawings. We reserve the right to change specifications without notice.

TO ORDER

UL65 P 6W 35 N

BASIC CODE
UL65 - CARTRIDGE ONLY
ULC65 - BODY WITH CHECK

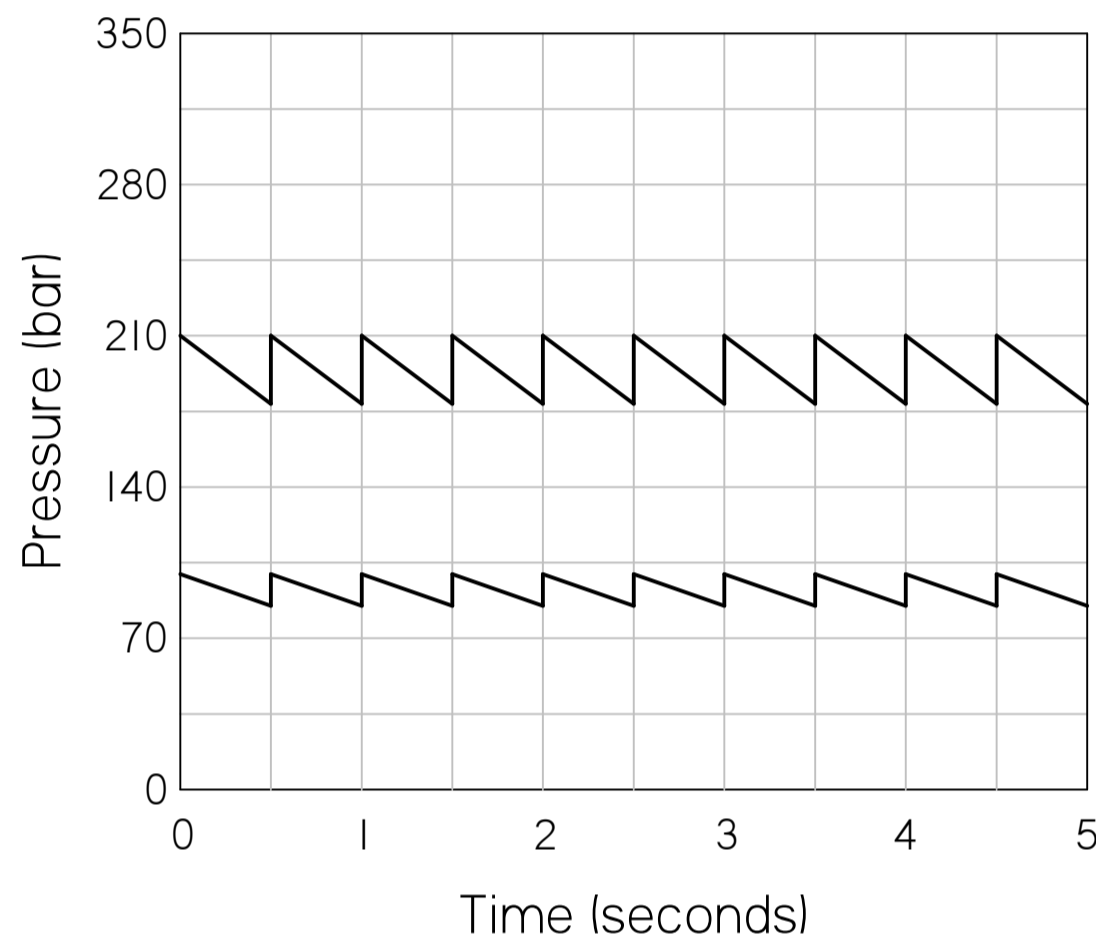
ADJUSTMENT
P: LEAKPROOF SCREW ADJUST

PORT SIZE
4W: 1/2" BSP PORTS
6W: 3/4" BSP PORTS
OMIT FOR CARTRIDGE

SEAL KIT
N: NITRILE
V: VITON

PRESSURE RANGE
20: 10 to 200 bar. Std setting 100 bar
35: 30 to 350 bar. Std setting 280 bar

PRESSURE CHARACTERISTICS



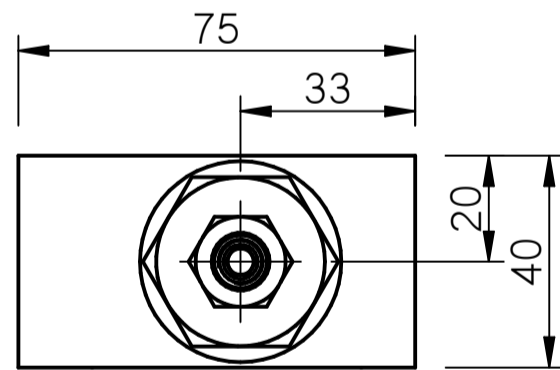
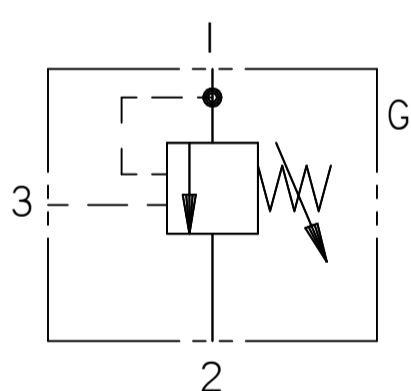
10

COMPLETE VALVE 3/4" BSP PORTS

BASIC CODE: UL65 6W

ONLY Body Part Numbers (BSP)

Aluminium	SG Iron
3/4"	ZI0396
3/4"	ZI0396S

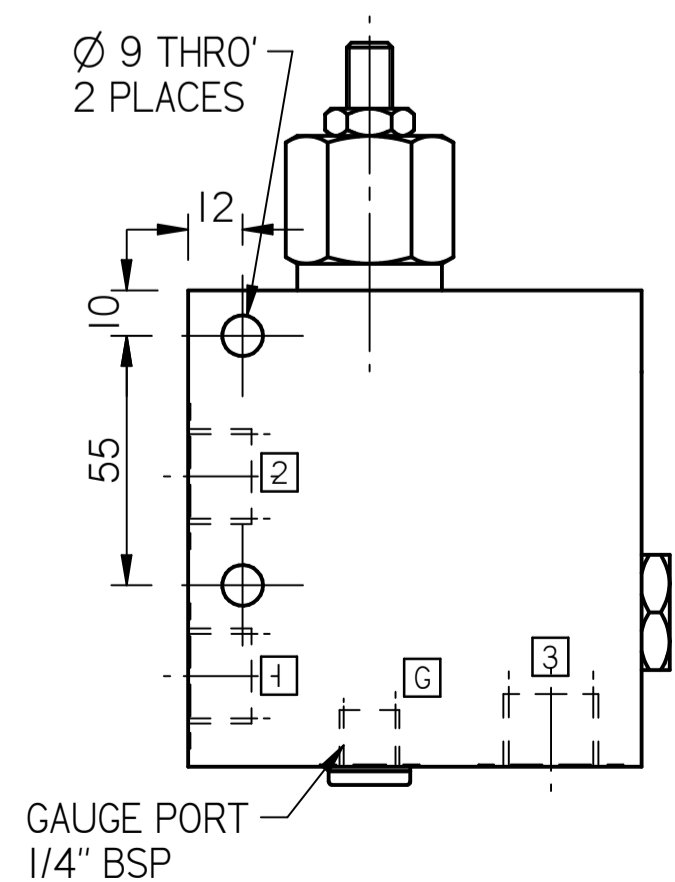
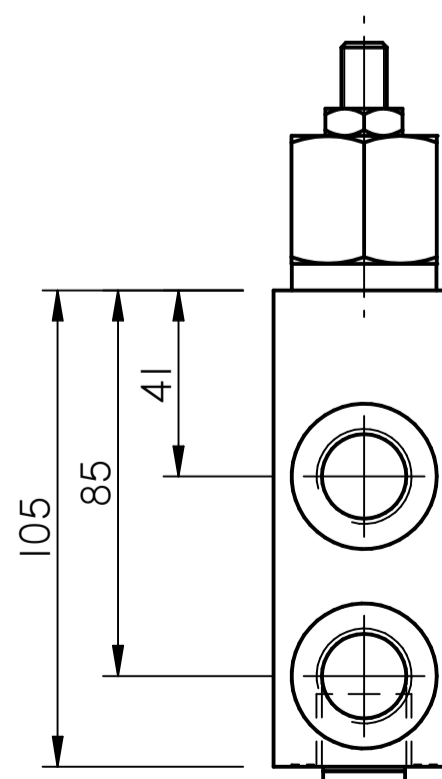
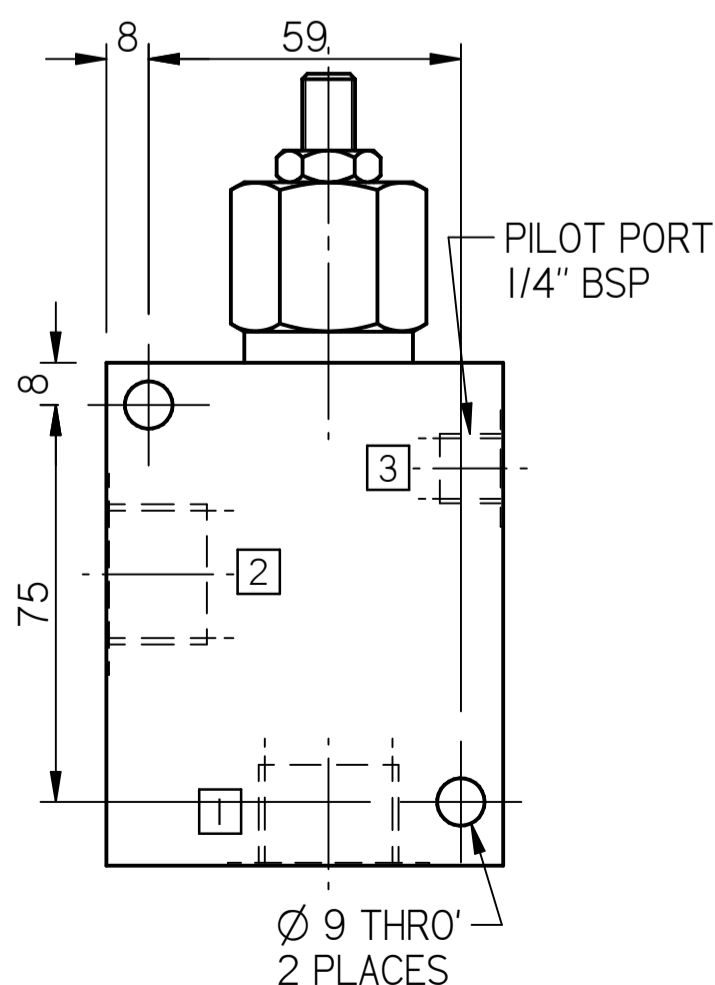
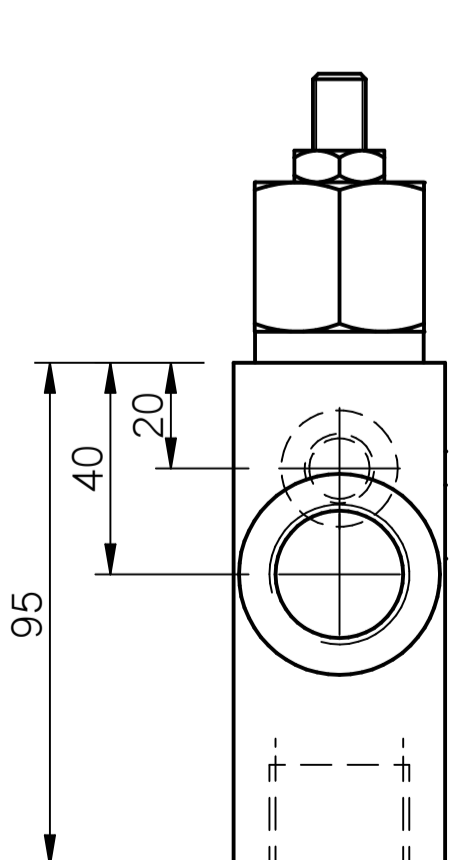
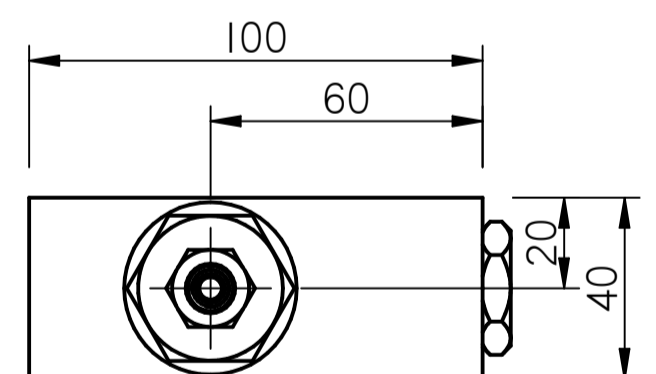
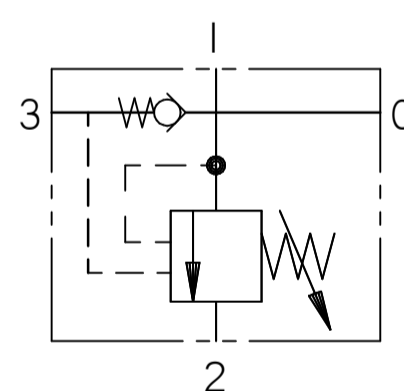


COMPLETE VALVE 1/2" BSP PORTS

BASIC CODE: ULC65 4W

ONLY Body Part Numbers (BSP)

Aluminium	SG Iron
1/2"	ZI0263
1/2"	ZI0263S



Where measurements are critical request certified drawings. We reserve the right to change specifications without notice.