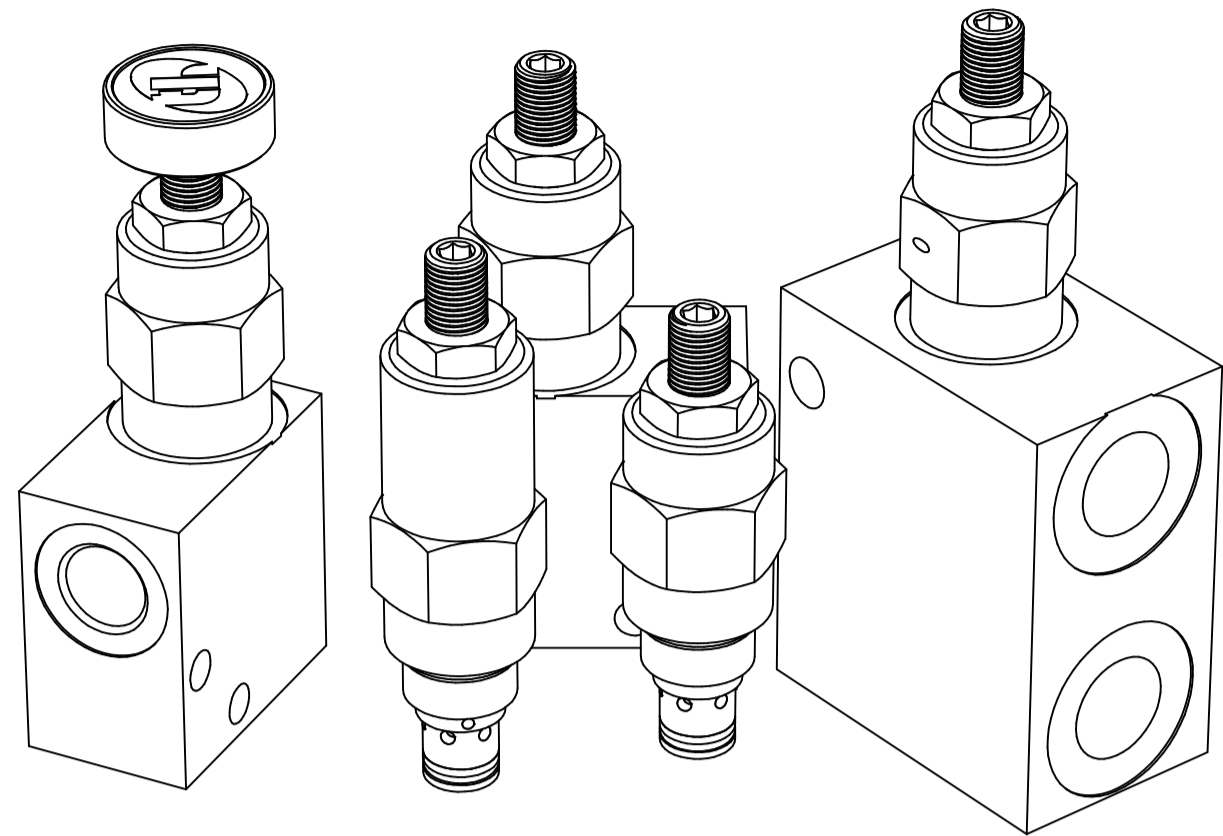
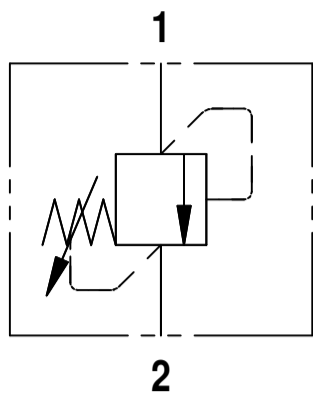




DRV08

1

FLUID POWER SYMBOL



APPLICATION

The valve is used to limit the pressure in the system. This economical solution for small flow systems is also suited for pilot systems. Being a direct operated, zero leak valve and its compact nature, the valve finds applications in most hydraulic systems.

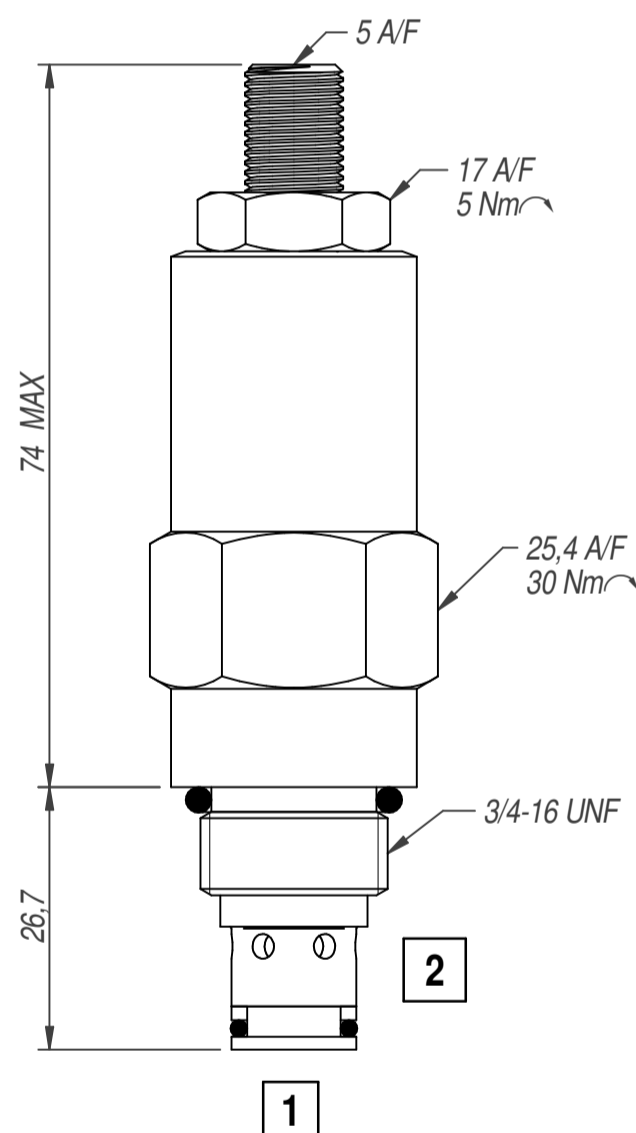
OPERATION

As with all direct acting relief valves, when the pressure at the Pressure Port (1) exceeds the spring force, the poppet shifts backward allowing the flow from the Pressure Port (1) to the Tank Port (2). The pressure can be set by the adjuster screw on top of the valve.

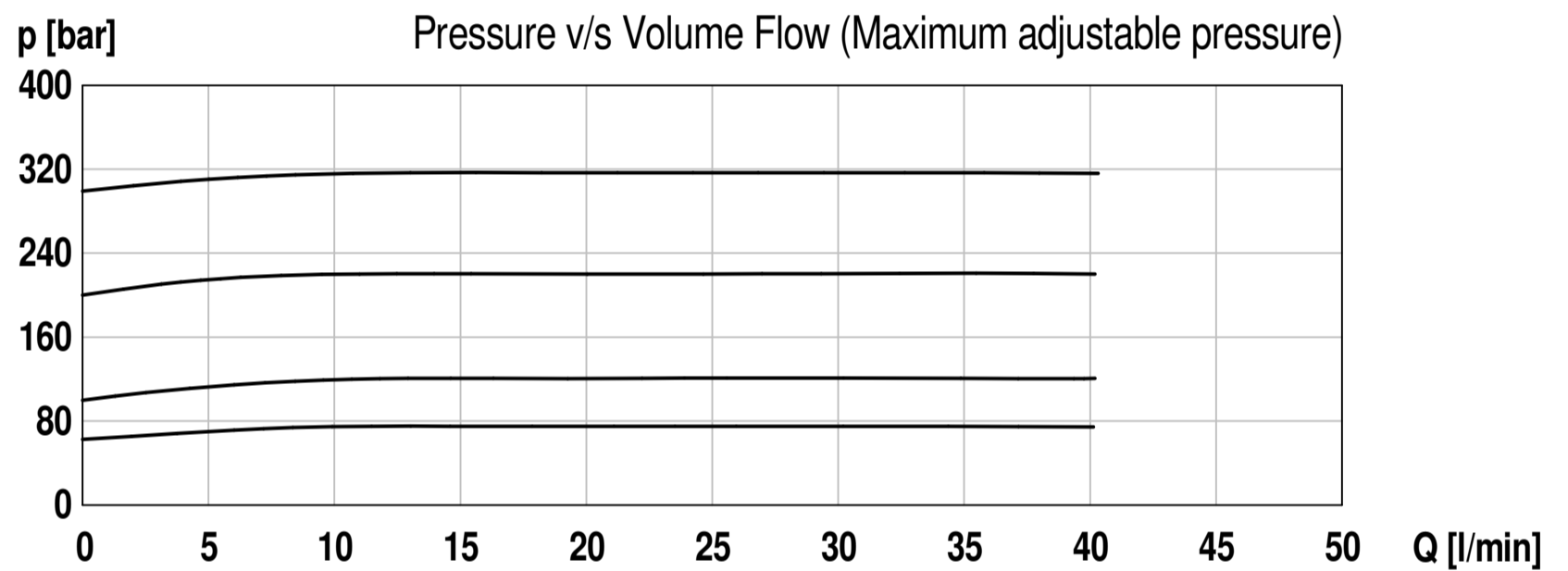
FEATURES

Hardened, match ground and honed working parts give a long, trouble-free service life. The valve provides a consistent and stable operation with a low pressure rise due to increasing flow. Cartridge construction allows for maximum flexibility in mounting.

DIMENSIONS



CHARACTERISTICS. Figures Based on: Oil Temp = 40°C, Viscosity = 40 cSt



General Specifications

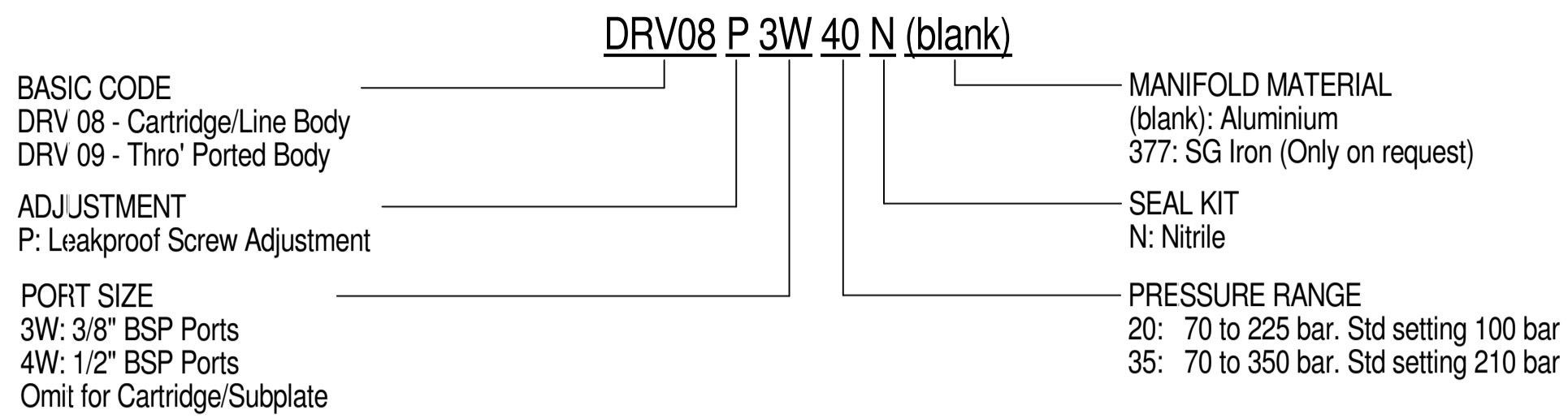
Description	direct acting relief valve
Construction	Screw-in Cartridge Construction for Cavity
Mounting	3/4" - 16 UNF screw thread for cartridge Threaded ports for housings.
Installation Position	any
Tightening Torque	30 Nm
Ambient Temp.	-20°C to +50°C
Cartridge Material	Working parts: Hardened, ground steel External surfaces: Zinc plated
Manifold Material	Aluminium or SG Iron
Cavity Number	SAE08-2 (Refer Cavities Section)
Weight	DRV08 * 20 * Cart: 0.19 kg DRV08 * 40 * Cart: 0.25 kg DRV08 * 2W **: 0.36 kg DRV08 * 3W **: 0.37 kg DRV09 * 3W **: 0.53 kg DRV09 * 4W **: 0.63 kg

Hydraulic Specifications

Hydraulic Fluid	Mineral oils. Contact sales office for other fluids.
Max. Pressure	350 bar
Rated Flow	35 lpm
Max. Contamination Level	BS5540/4 Class 18/16/13 (25µ nominal)
Viscosity Range	5 to 500 cSt
Leakage Flow	Less than 0.3 ml/min (5 dpm)
Hydraulic Fluid Temp.	-20°C to +90°C (Standard Seals)
Mounting	Line/Subplate
Peak Pressure	400 bar
Max. Flow	60 lpm
Seal Kit Number	SKDRV08 (Nitrile)

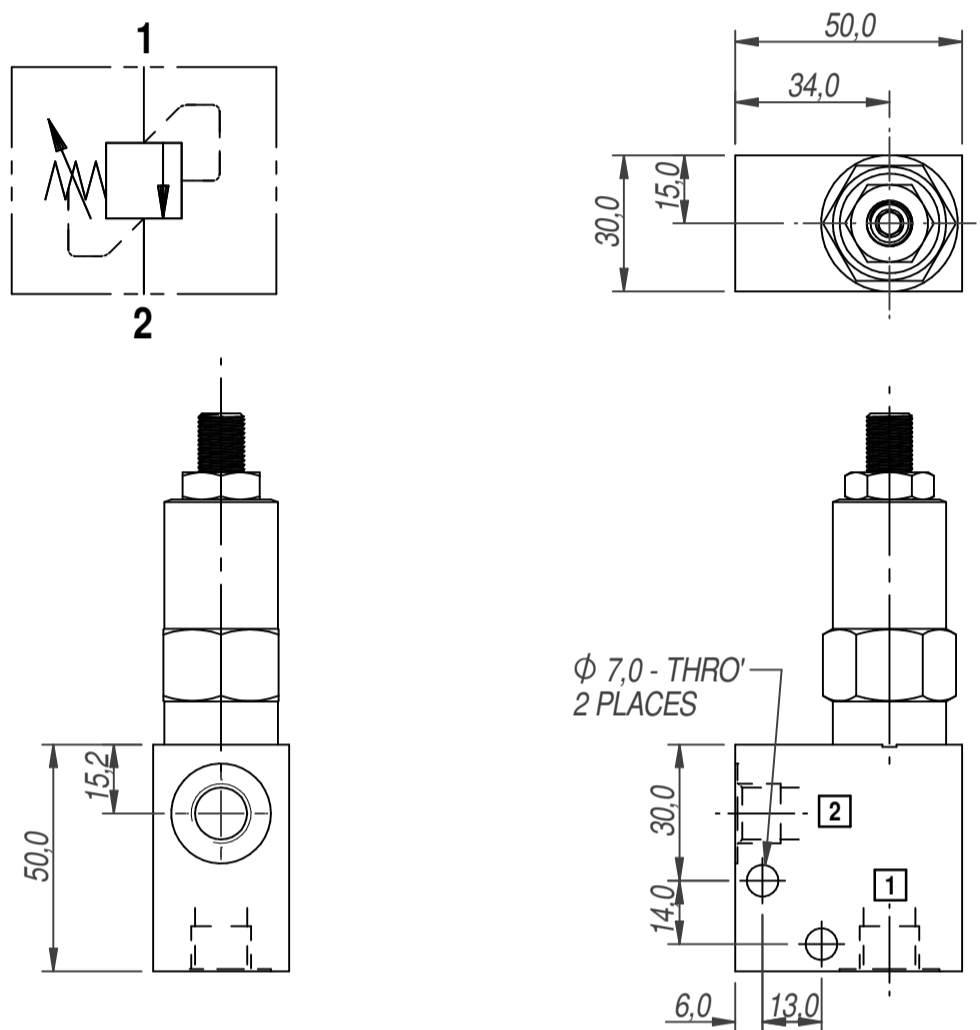
Direct Acting Relief Valve (Poppet Type)

ORDERING CODE



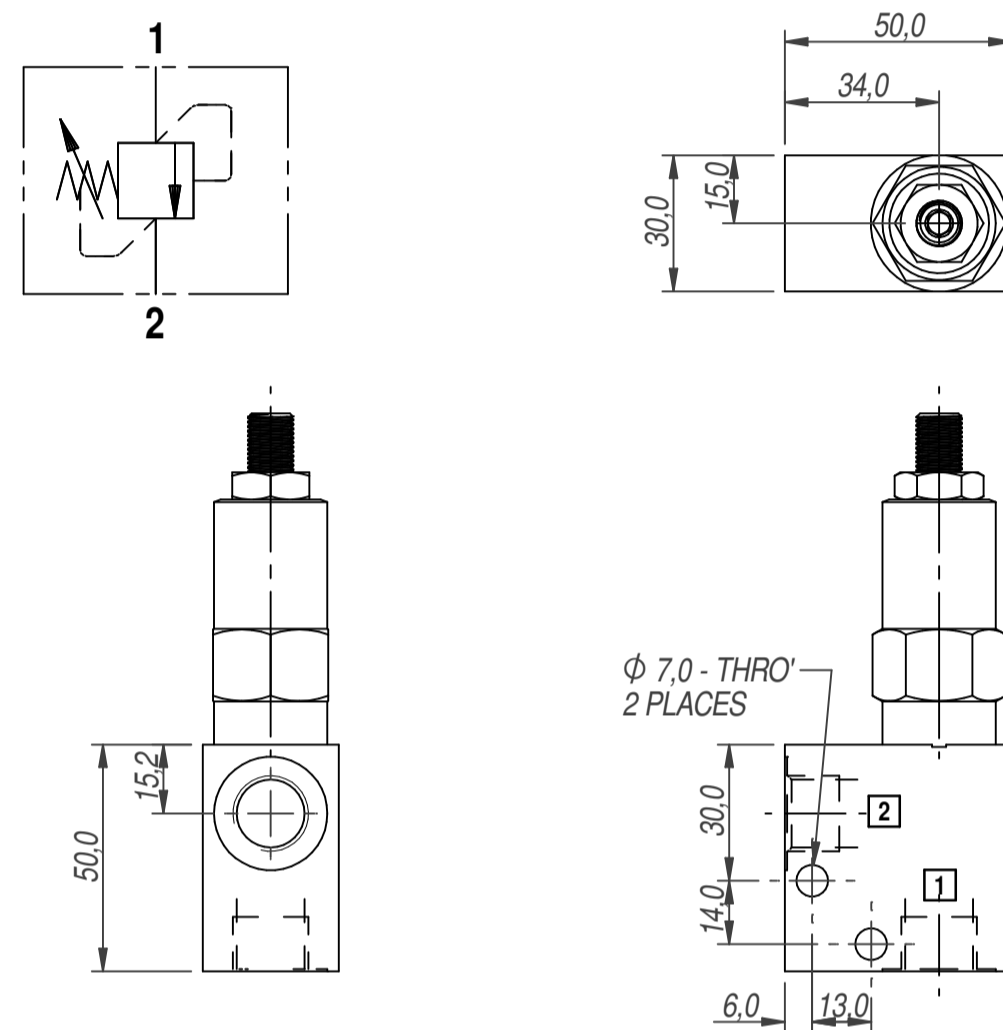
DIMENSIONS

BASIC CODE: DRV08 * 2W **
ONLY Body Part Numbers
 Aluminium SG Iron
 1/4" BSPP - Z10216 1/4" BSPP - Z10216S



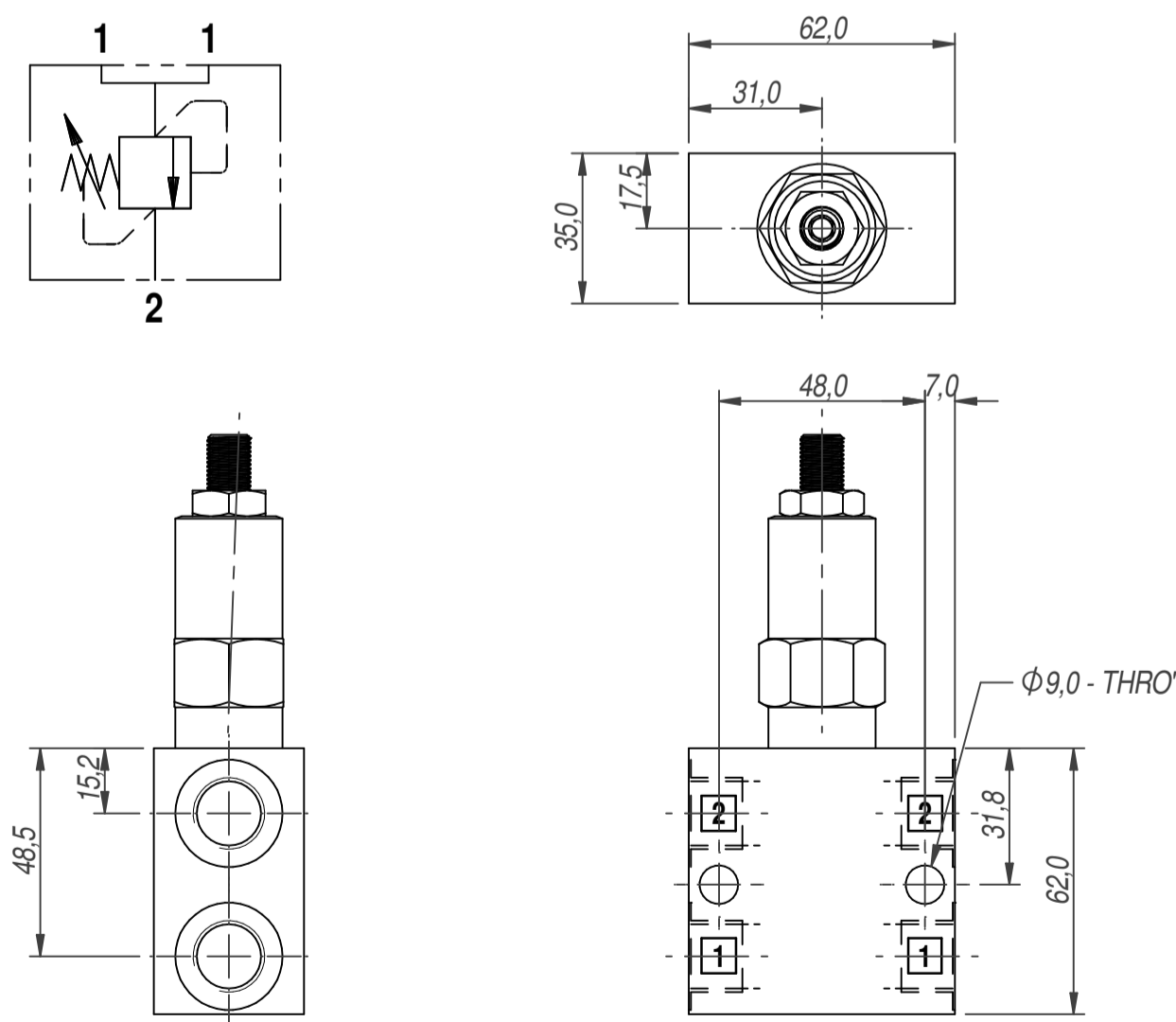
DIMENSIONS

BASIC CODE: DRV08 * 3W **
ONLY Body Part Numbers
 Aluminium SG Iron
 3/8" BSPP - Z10280 3/8" BSPP - Z10280S



DIMENSIONS

BASIC CODE: DRV09 * 3W ***
ONLY Body Part Numbers
 Aluminium SG Iron
 3/8" BSPP - Z10507 3/8" BSPP - Z10507S



DIMENSIONS

BASIC CODE: DRV09 * 4W ***
ONLY Body Part Numbers
 Aluminium SG Iron
 1/2" BSPP - Z10508 1/2" BSPP - Z10508S

