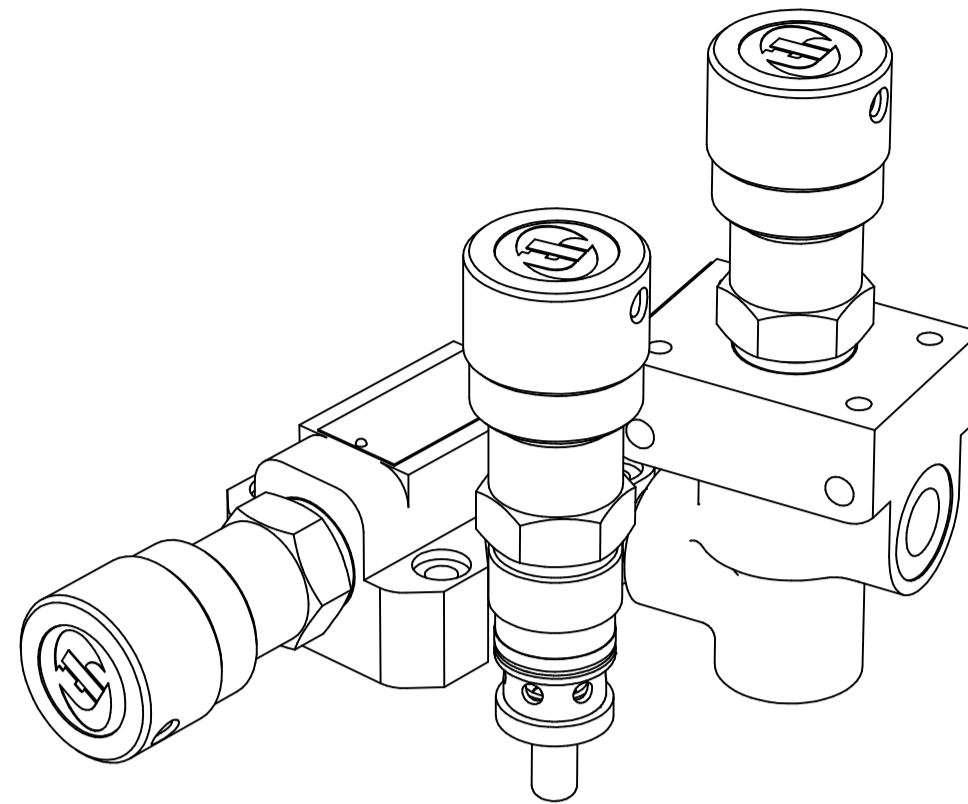
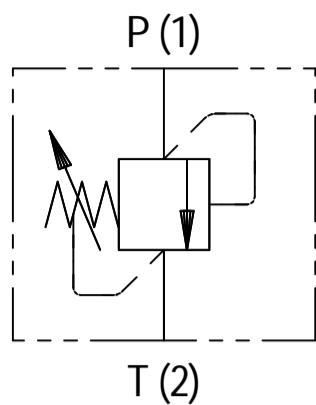




DR10

1

FLUID POWER SYMBOL



APPLICATION

Pressure Relief valves are used to limit the pressure in the system as set on the valve. Direct Relief Valves are applicable in systems where quick pressure release is of prime concern for safety. This is an economical solution for systems having small flows. The valve is a zero-leak valve due to the metal sealing of the poppet on the seat. The DR10 can also be used for pilot systems.

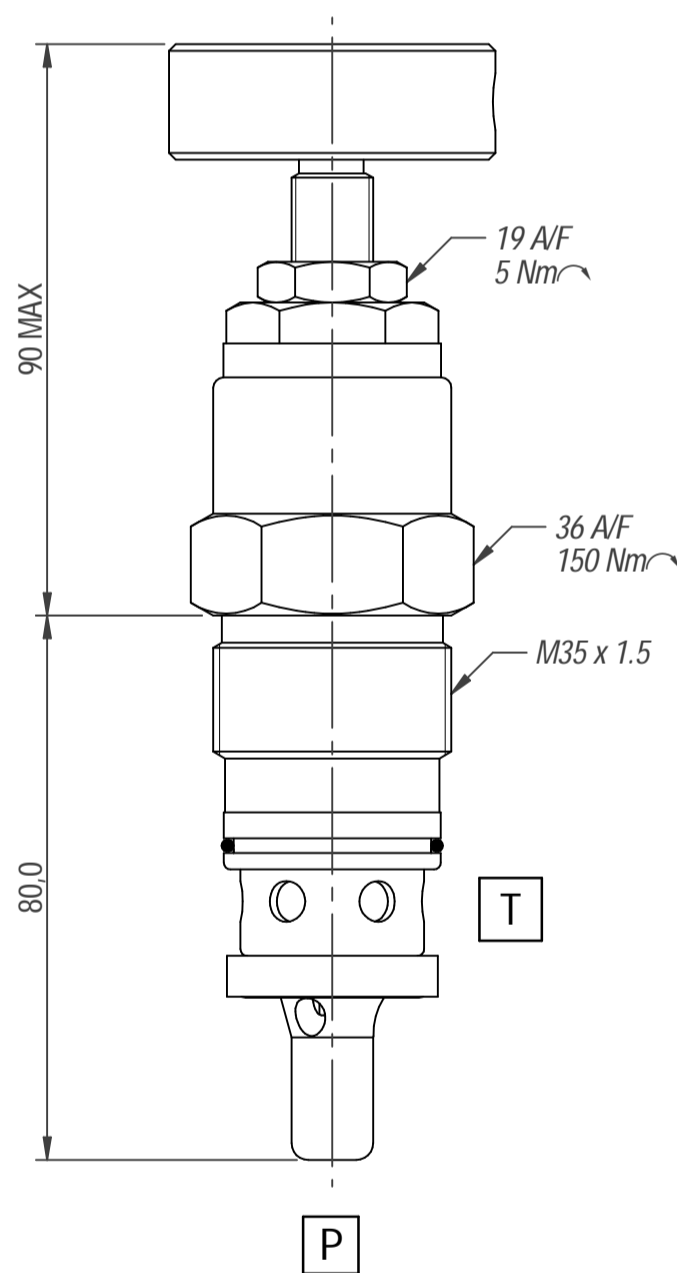
OPERATION

As with all direct acting pressure relief valves, when the pressure at the inlet (P) exceeds the spring force set by the adjuster, the poppet moves back, opening the inlet (P) to outlet (T). This relieves the pressure to tank. The dampening buffer on the nose of the valve dampens the vibrations caused by pressure variations on the valve. This gives it a smooth opening and closing characteristic with minimum chatter.

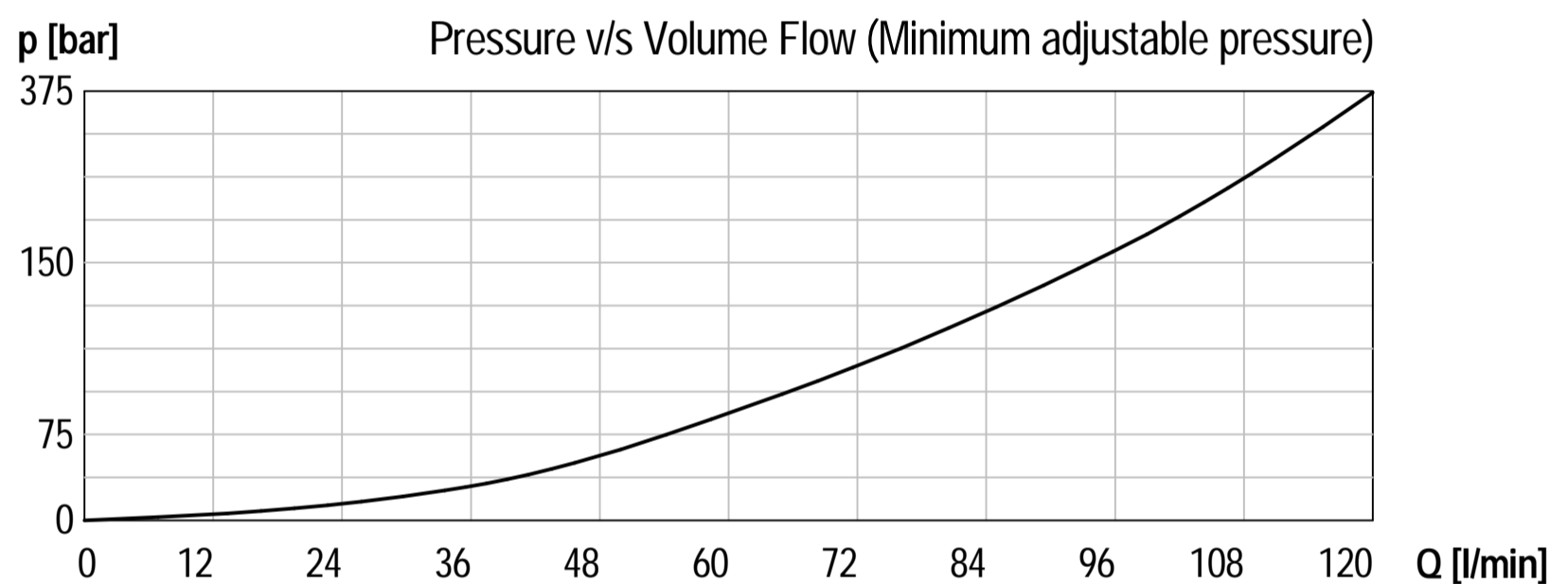
FEATURES

Matched ground and hardened working parts give a long and trouble-free life. Consistent stable operation providing low pressure over ride even with increasing flows. Cartridge type construction gives maximum flexibility in mounting.

DIMENSIONS



CHARACTERISTICS. Figures Based on: Oil Temp = 40°C, Viscosity = 40 cSt



General Specifications

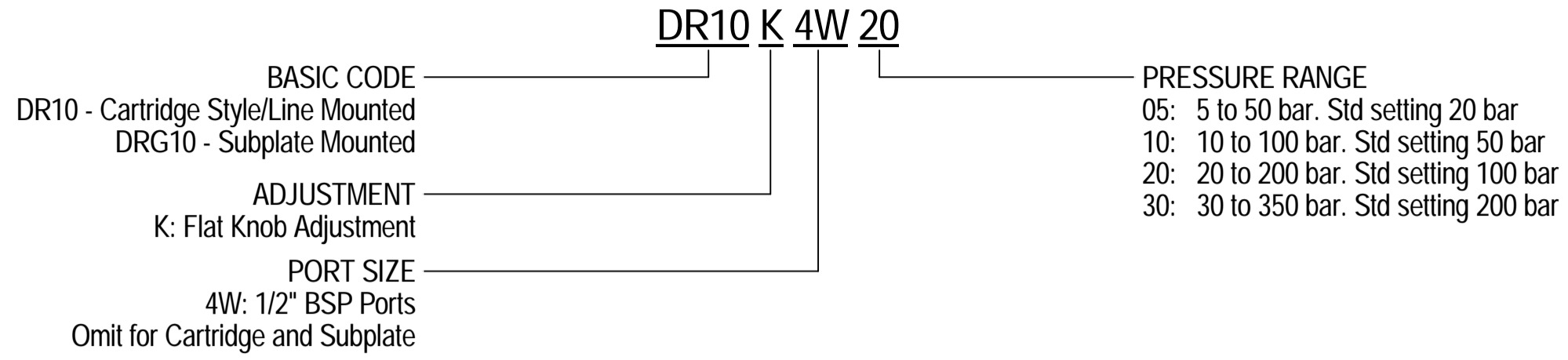
Description	direct acting relief valve
Construction	Screw-in Cartridge Construction for Cavity
Mounting	M35 x 1.5 screw thread for cartridge Threaded ports for housings.
Installation Position	any
Tightening Torque	150 Nm
Ambient Temp.	-20°C to +50°C
Cartridge Material	Working parts: Hardened, ground steel External surfaces: Zinc plated
Manifold Material	Aluminium or SG Iron
Cavity Number	CDR10 (Refer Cavities Section)
Weight	DR 10 * 20 Cart: 0.19 kg DR 10 * 4W **: 0.36 kg DRG 10 * **: 0.37 kg

Hydraulic Specifications

Hydraulic Fluid	Mineral oils. Contact sales office for other fluids.
Max. Pressure	350 bar
Rated Flow	60 lpm
Max. Contamination Level	BS5540/4 Class 18/16/13 (25µ nominal)
Viscosity Range	5 to 500 cSt
Leakage Flow	Less than 0.3 ml/min (5 dpm)
Hydraulic Fluid Temp.	-20°C to +90°C (Standard Seals)
Mounting	Line/Subplate
Peak Pressure	400 bar
Max. Flow	120 lpm
Seal Kit Number	SKDR10 (Nitrile)

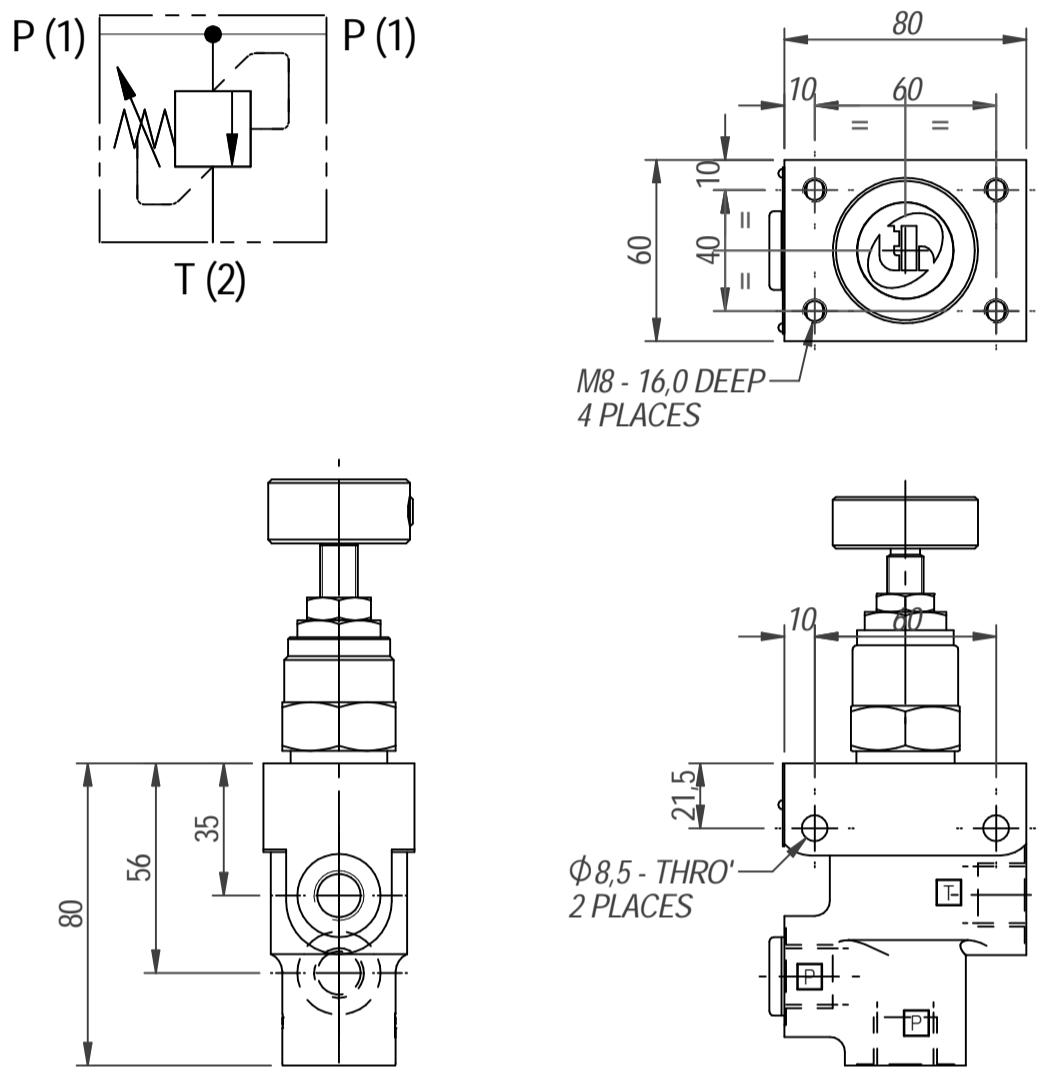
Direct Acting Relief Valve

ORDERING CODE



DIMENSIONS

BASIC CODE: DR10 * 4W **



DIMENSIONS

BASIC CODE: DRG06 * **

SUBPLATE DIMENSIONS

