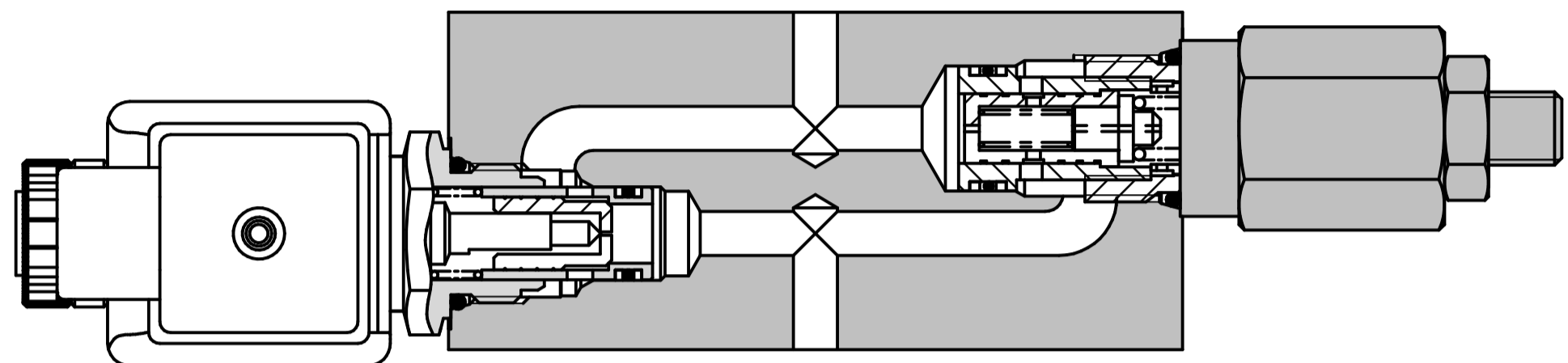
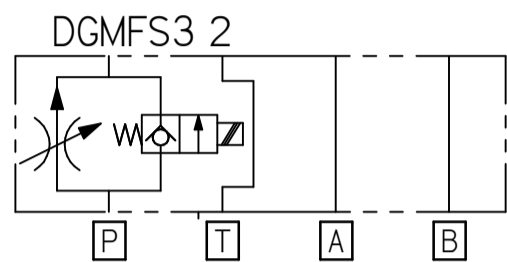
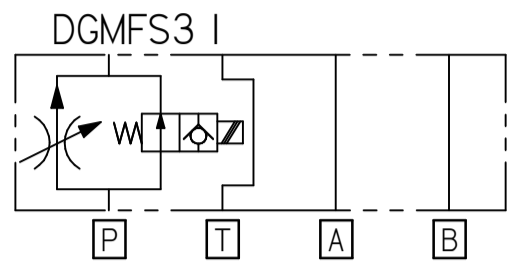


FLUID POWER SYMBOL



Application

The fine feed-/fast approach valves are utilised in hydraulic systems, which require an electrically controlled fine feed-/fast approach changeover, such as positioning controls on machine tools or elevation controls of elevating platforms, etc. Due to the sandwich construction, these fine feed-/fast approach valves can be integrated into stacked systems as an intermediate flange.

Operation

The fine feed-/fast approach valve serves for the electrically controlled two-stage speed control. Fine feed and fast approach. In the first stage, the fine feed, the volume flow is controlled by the flow control valve, to the manually adjusted value independent on the load. In doing so, the poppet valve is closed. In the second stage, the fast approach, the volume flow, dependent of the load and of the system pressure, flows through the poppet valve.

Features

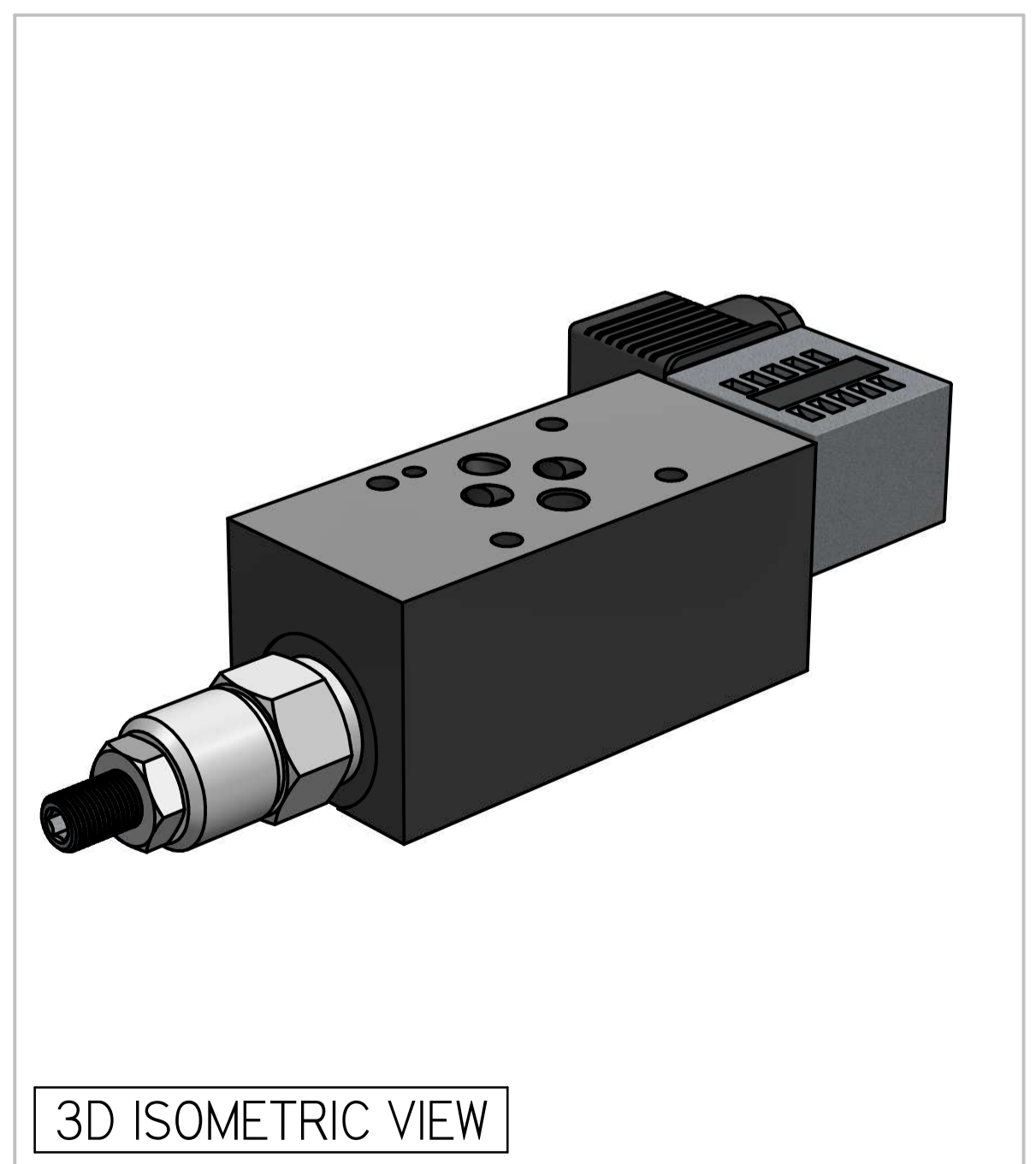
Fine feed-/fast approach valve in sandwich construction. 2-way flow control- and 2/2-way poppet valve cartridges are installed. The poppet valve cartridge is electrically actuated. Sandwich construction offers a compact solution. Hardened working parts ensure a long, reliable and trouble-free life. The cartridge construction gives flexibility in servicing.

12

Specifications

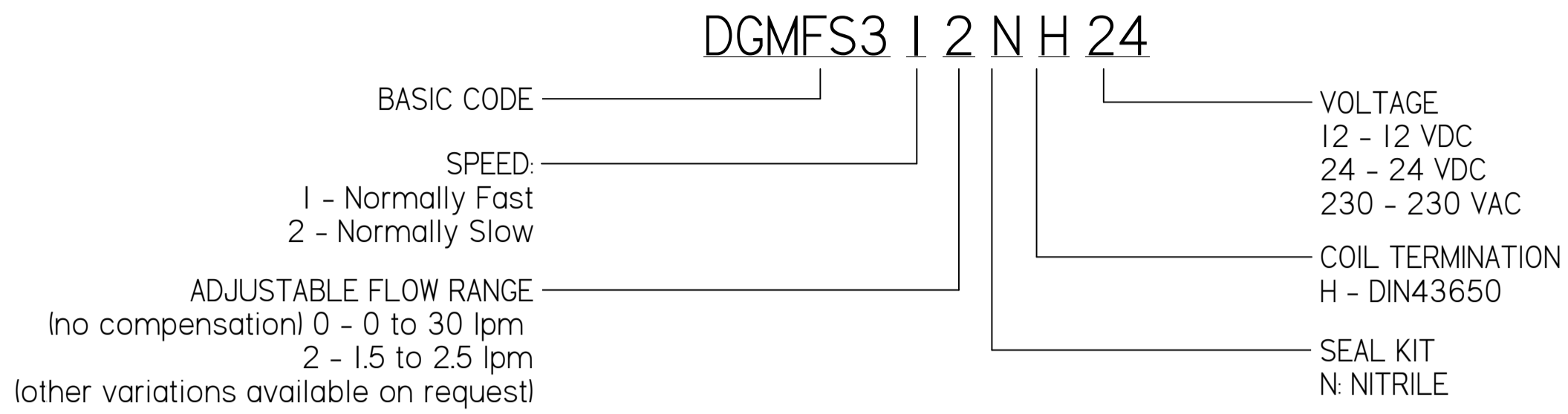
Figures based on: Oil Temp = 40°C Viscosity = 40 cSt

Max Flow	30 lpm
Max Pressure	350 bar
Cartridge Material	Working parts : Hardened, ground steel External surfaces : Zinc plated
Weight	DGMSP3 PT: 1.60 kgs
Manifold Material	SG Iron
Mounting	CETOP3
Seal Kit Number	SKDGMSP3 (Nitrile) SKDGMSP3V (Viton®)
Filtration Level	BS5540/4 Class 18/13 (25µ nominal)
Operating Temp	-20°C to +90°C (Standard Seals)
Leakage	Less than 0.3 millilitres/min (5 dpm)
Viscosity Range	5 to 500 cSt

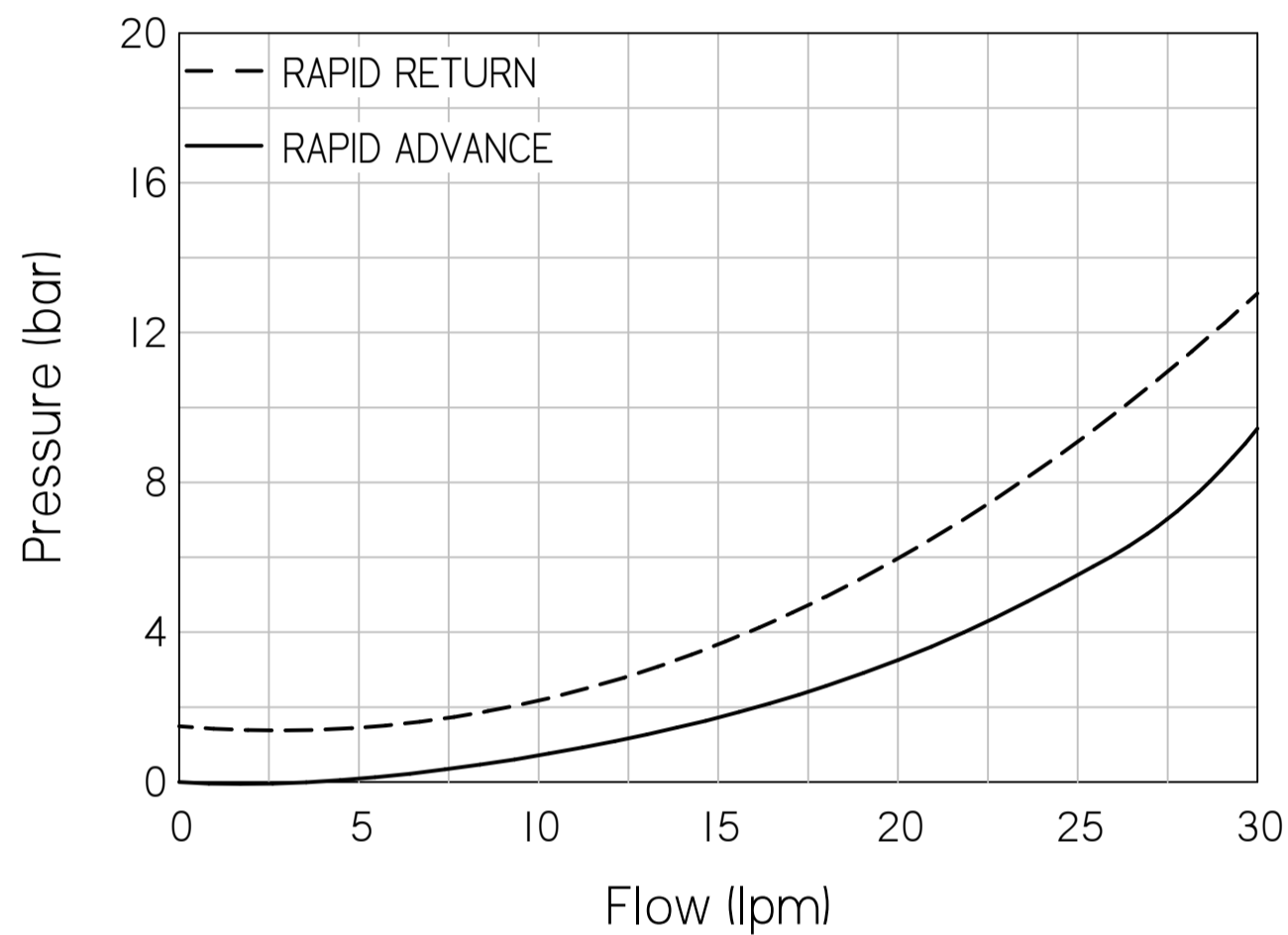


Where measurements are critical request certified drawings. We reserve the right to change specifications without notice.

TO ORDER

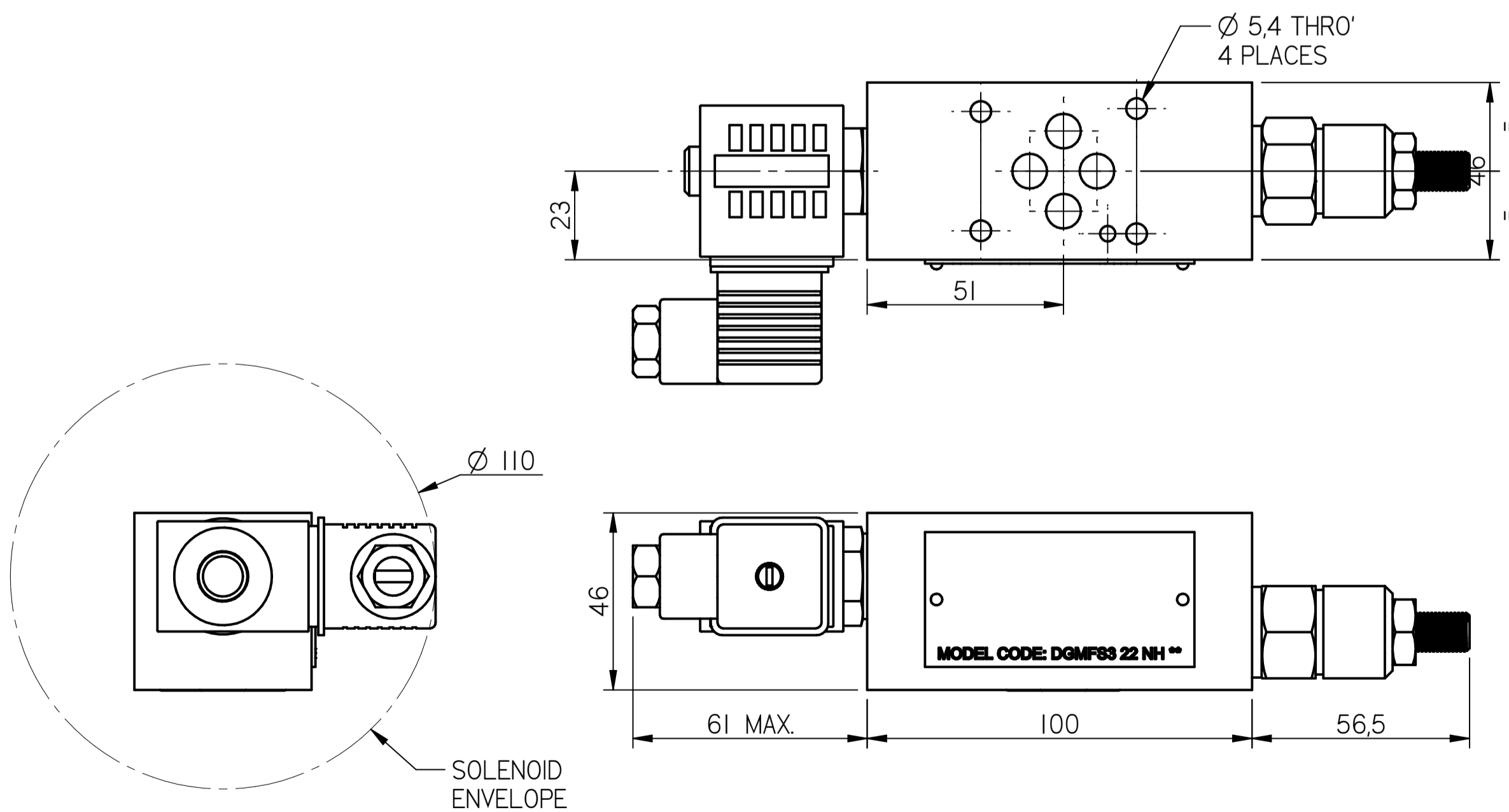


PRESSURE CHARACTERISTICS



COMPLETE VALVE CETOP3

BASIC CODE: DGMFS3



12

Where measurements are critical request certified drawings. We reserve the right to change specifications without notice.