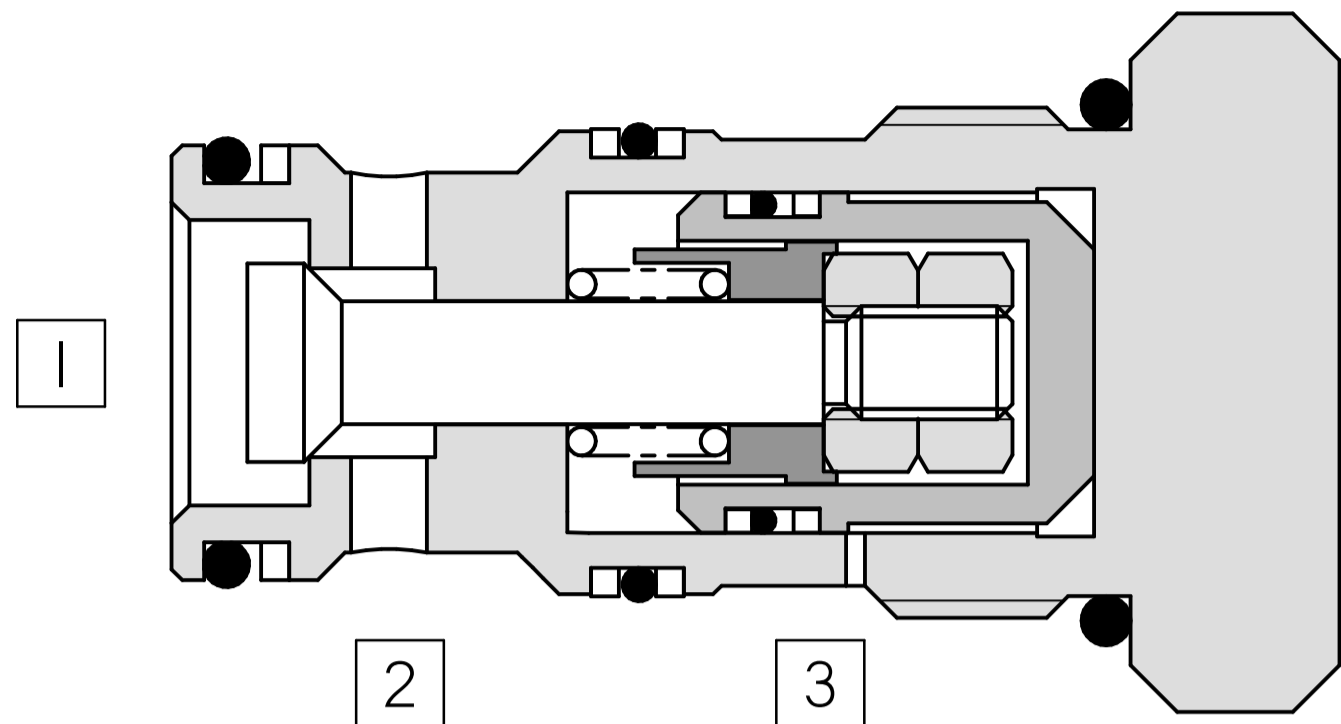
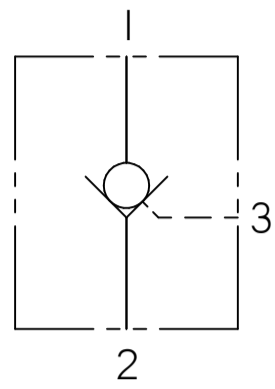
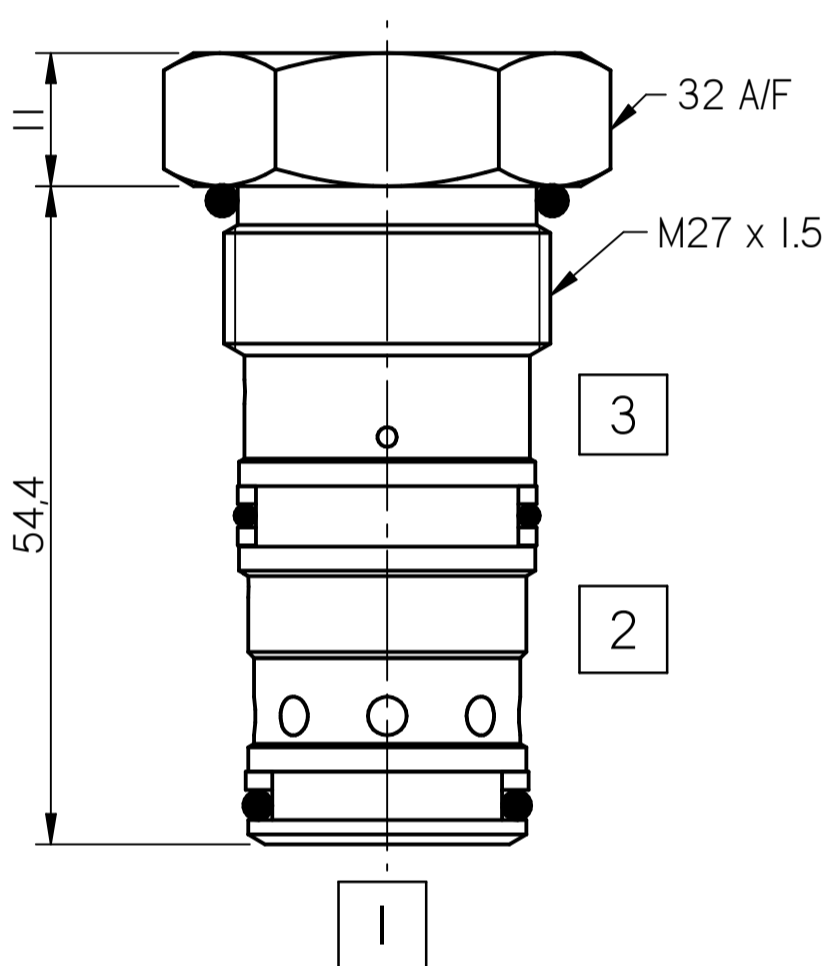


FLUID POWER SYMBOL



5



Application

Pilot check valves allow flow to pass in one direction, with a low pressure drop, then prevent reverse flow until pilot pressure is applied. There are many applications for this valve type, the most common being to lock and hold a cylinder, or another hydraulic actuator, in position. The CK95 is a small cartridge valve and is ideally suited for fitting directly into a cylinder, giving economy of installation, direct control of cylinder movement and ease of servicing.

Operation

Pressure on the valve port causes the poppet to lift against the spring force, allowing the flow to the cylinder port.

Reverse flow is prevented by the poppet reseating. Pressure applied to the pilot port will overcome the cylinder port pressure and lift the poppet from its seat, allowing flow from the cylinder to valve port.

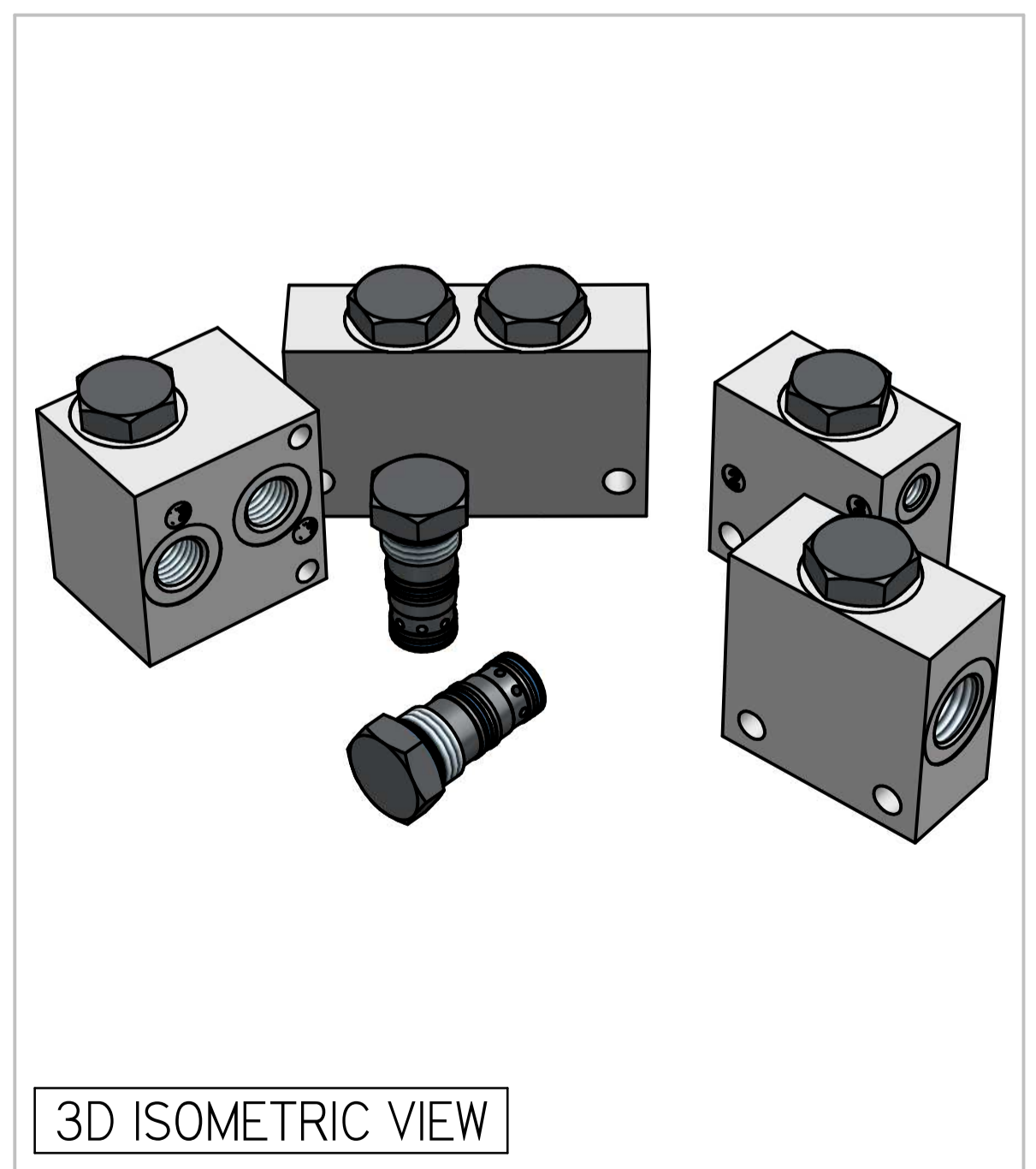
Features

Hardened and ground poppet gives excellent flow capability for valve size, positive sealing and long working life. Cartridge construction allows installation in actuators, manifold blocks and hydraulic Integrated Circuits. The valve fits the same cavity as the OS195 overcenter valve. Seal on piston prevents leakage between Port 2 and Port 3.

Specifications

Figures based on: Oil Temp = 40°C Viscosity = 40 cSt

Max Flow	100 lpm
Max Pressure	350 bar
Pilot Ratio	3:1
Cartridge Material	Working parts : Hardened, ground steel External surfaces : Zinc plated
Weight (Cartridge only)	CK95: 0,240 kg
Cavity Number	TH12336 (Refer Cavities Section)
Manifold Material	Aluminium (upto 250 bar) Add Suffix '729' for SG Iron (350 bar)
Torque into Cavity	60 Nm
Mounting	Line
Seal Kit Number	SKCK95 (Nitrile) SKCK95 V (Viton®)
Filtration Level	BS5540/4 Class I8/I3 (25µ nominal)
Operating Temp	-20°C to +90°C (Standard Seals)
Leakage	Less than 0.3 millilitres/min (5 dpm)
Viscosity Range	5 to 500 cSt

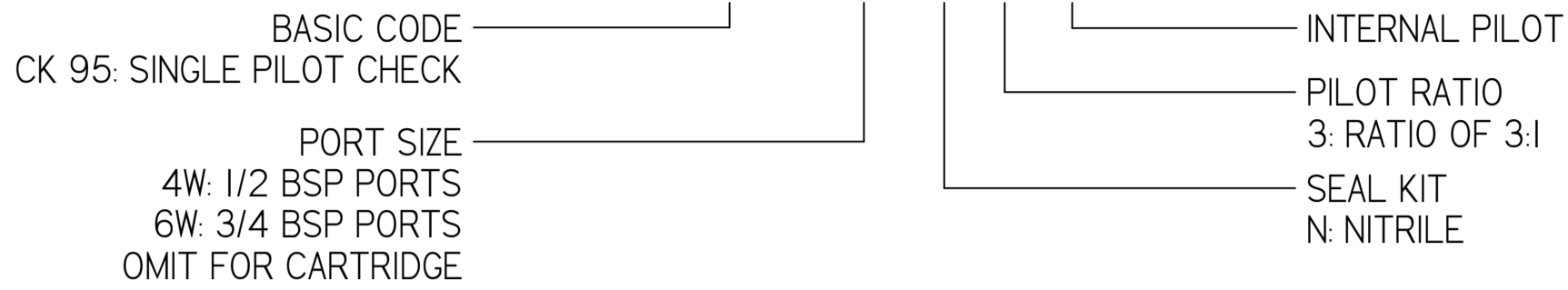


3D ISOMETRIC VIEW

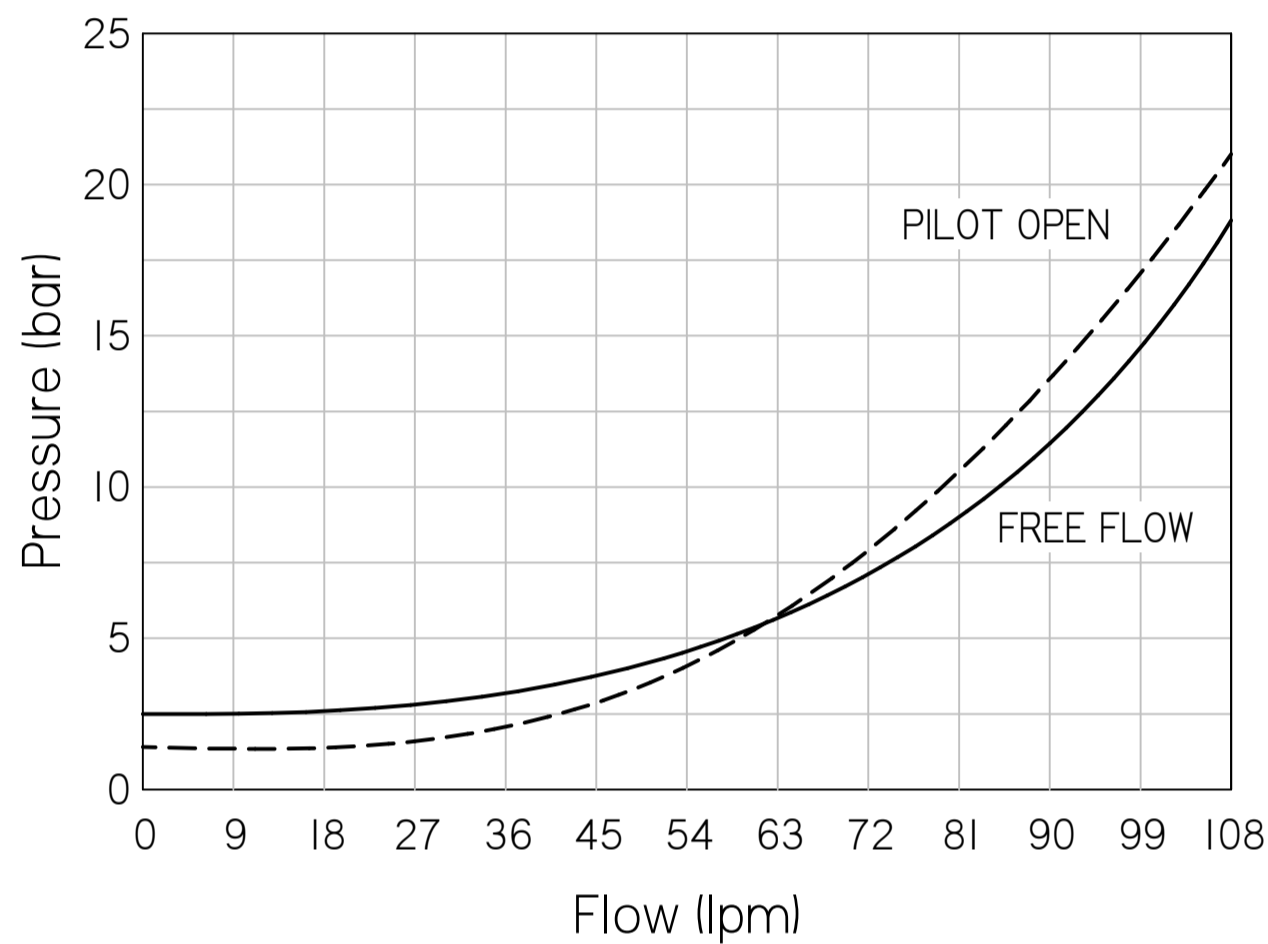
Where measurements are critical request certified drawings. We reserve the right to change specifications without notice.

TO ORDER

CK95 6W N 3 INI



PRESSURE CHARACTERISTICS



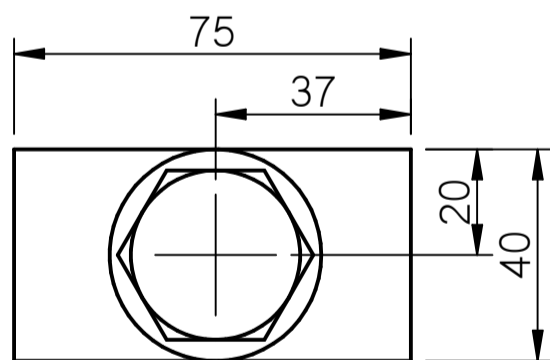
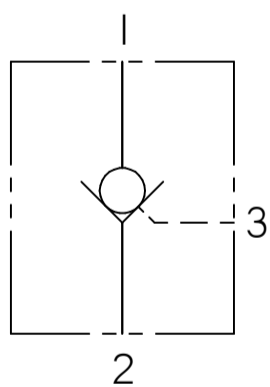
5

COMPLETE VALVE 1/2" 3/4" BSP PORTS

BASIC CODE: CK95 4W / CK95 6W

ONLY Body Part Numbers (BSP)

Aluminium		SG Iron	
1/2"	Z10359	1/2"	Z10359S
3/4"	Z10436	3/4"	Z10436S

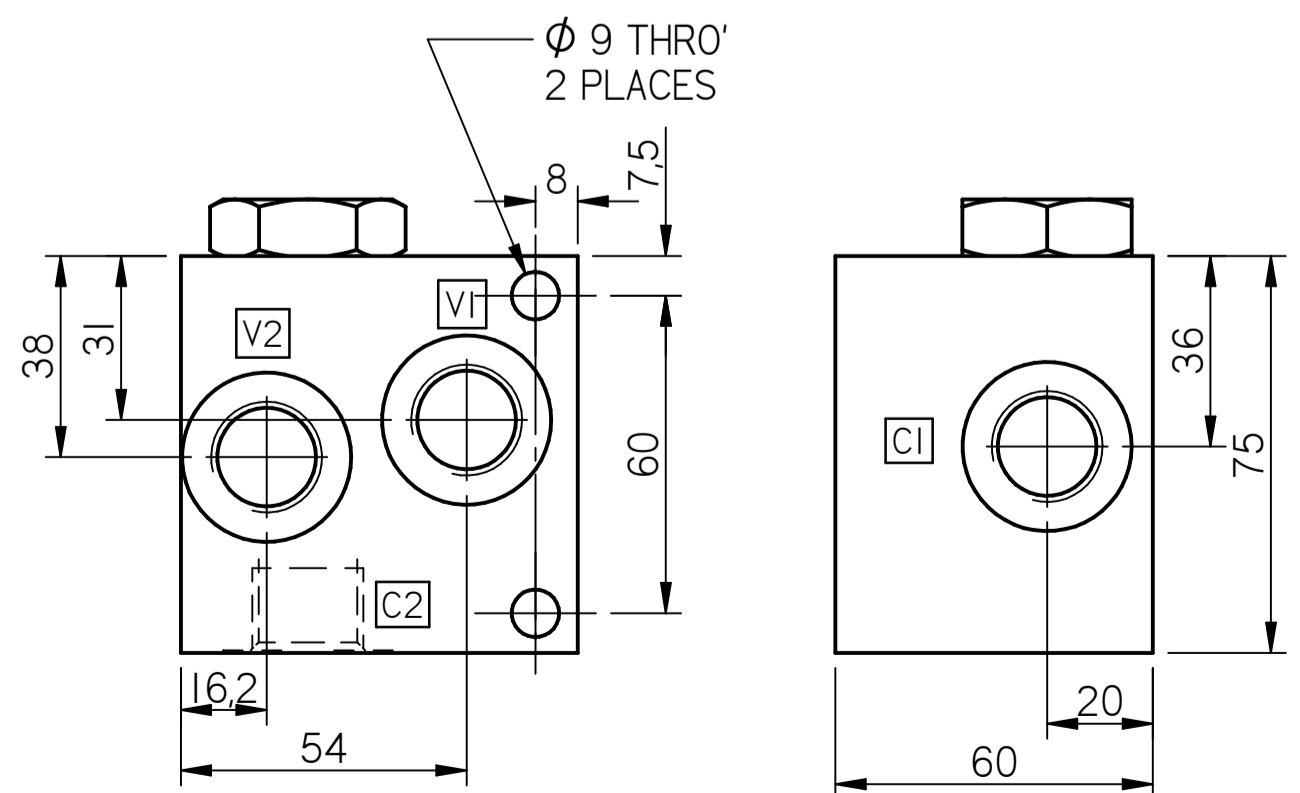
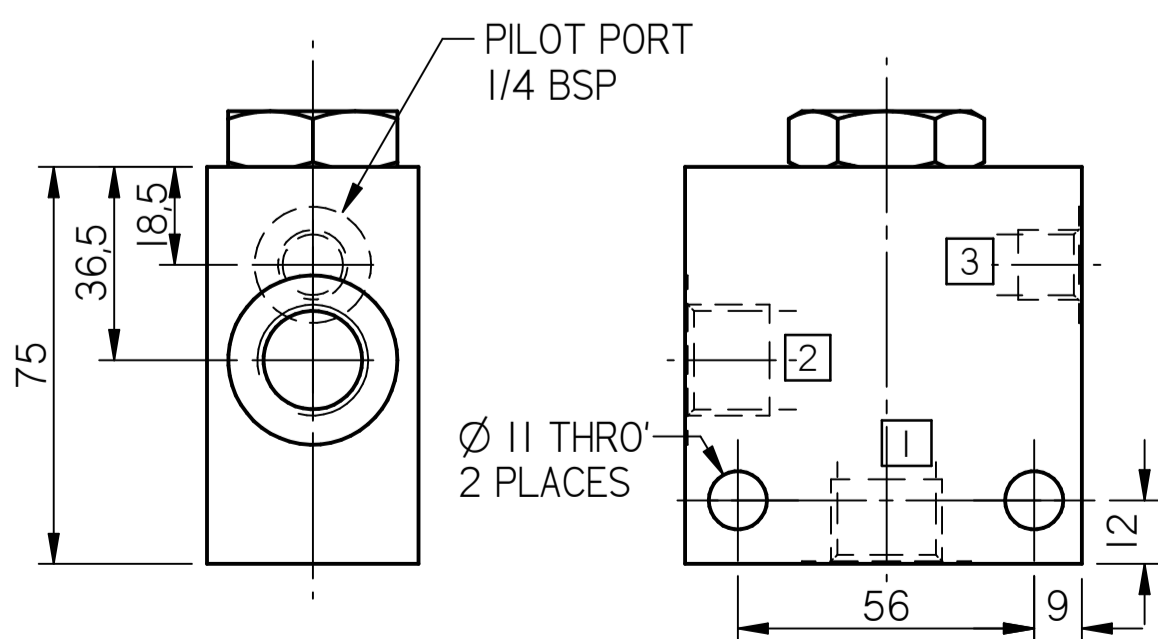
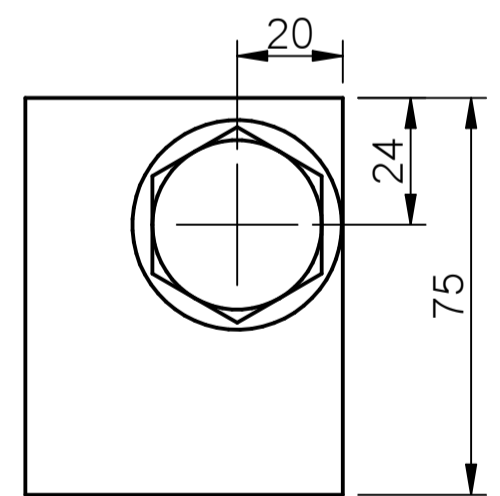
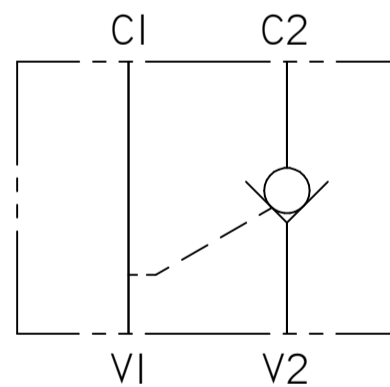


COMPLETE VALVE 1/2" BSP PORTS

BASIC CODE: CK95 4W INI (INTERNAL PILOT)

ONLY Body Part Numbers (BSP)

Aluminium		SG Iron	
1/2"	Z10372	1/2"	Z10372S



Where measurements are critical request certified drawings. We reserve the right to change specifications without notice.

TO ORDER

CK2 95 4W N 3



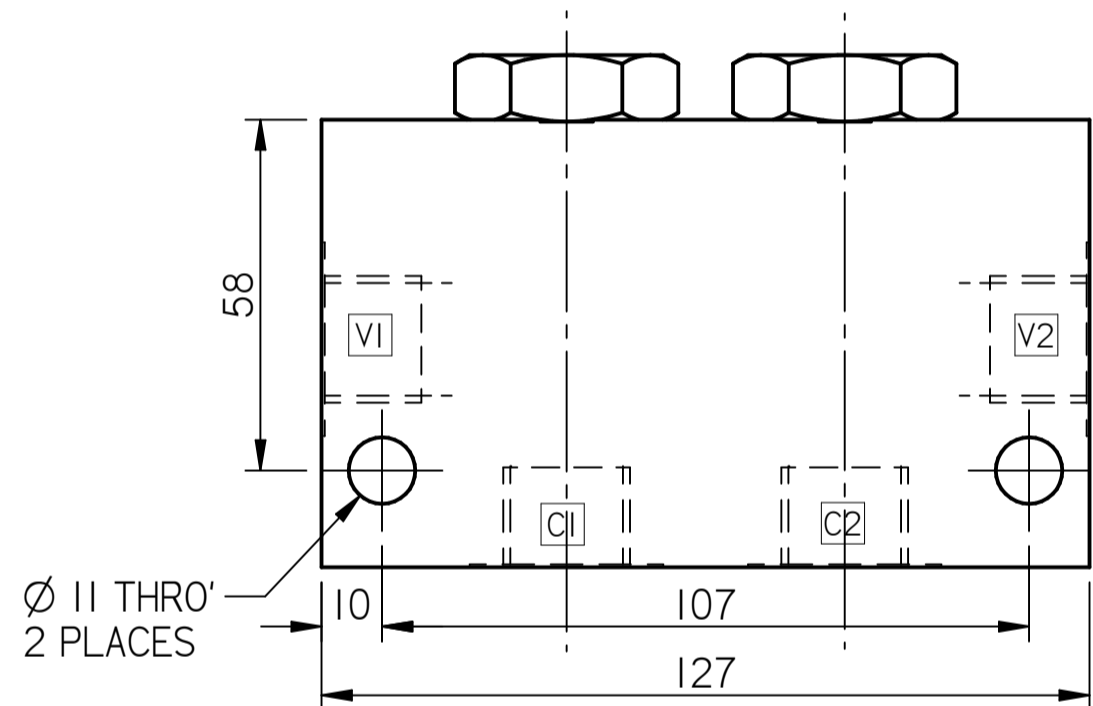
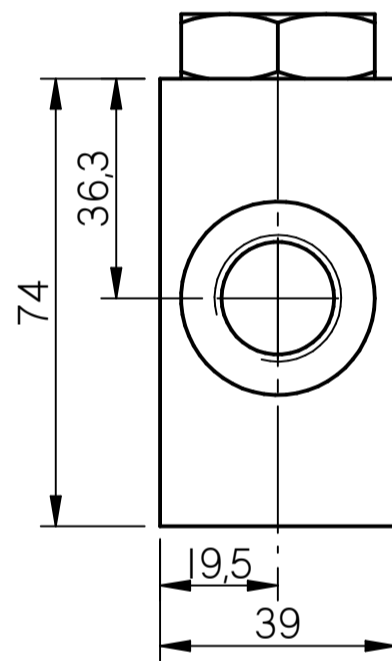
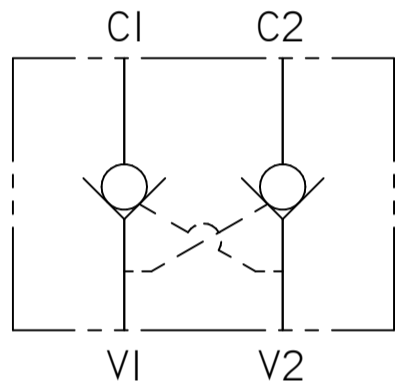
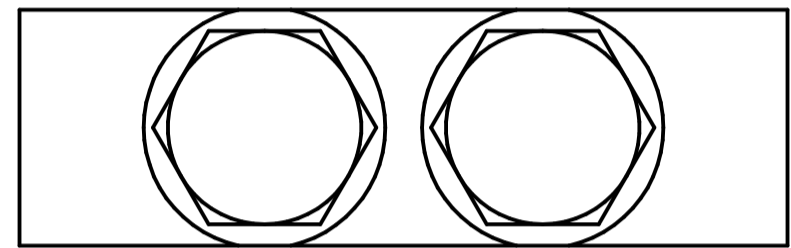
5

COMPLETE VALVE 1/2" BSP PORTS

BASIC CODE: CK2 95 4W

ONLY Body Part Numbers (BSP)

Aluminium	SG Iron
1/2" Z10394	1/2" Z10394S



Where measurements are critical request certified drawings. We reserve the right to change specifications without notice.

NOTES