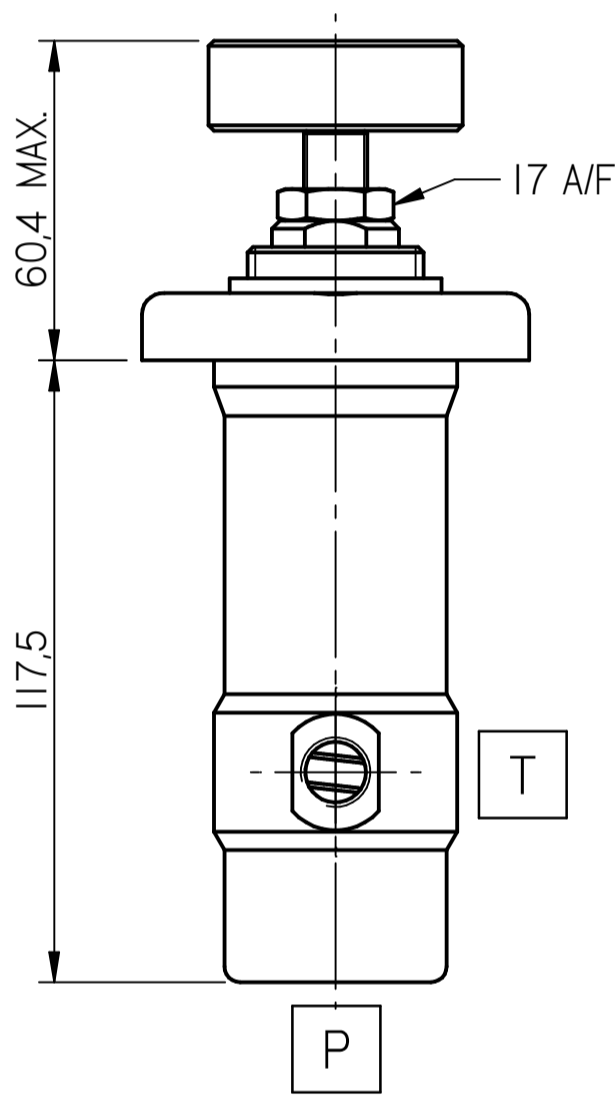
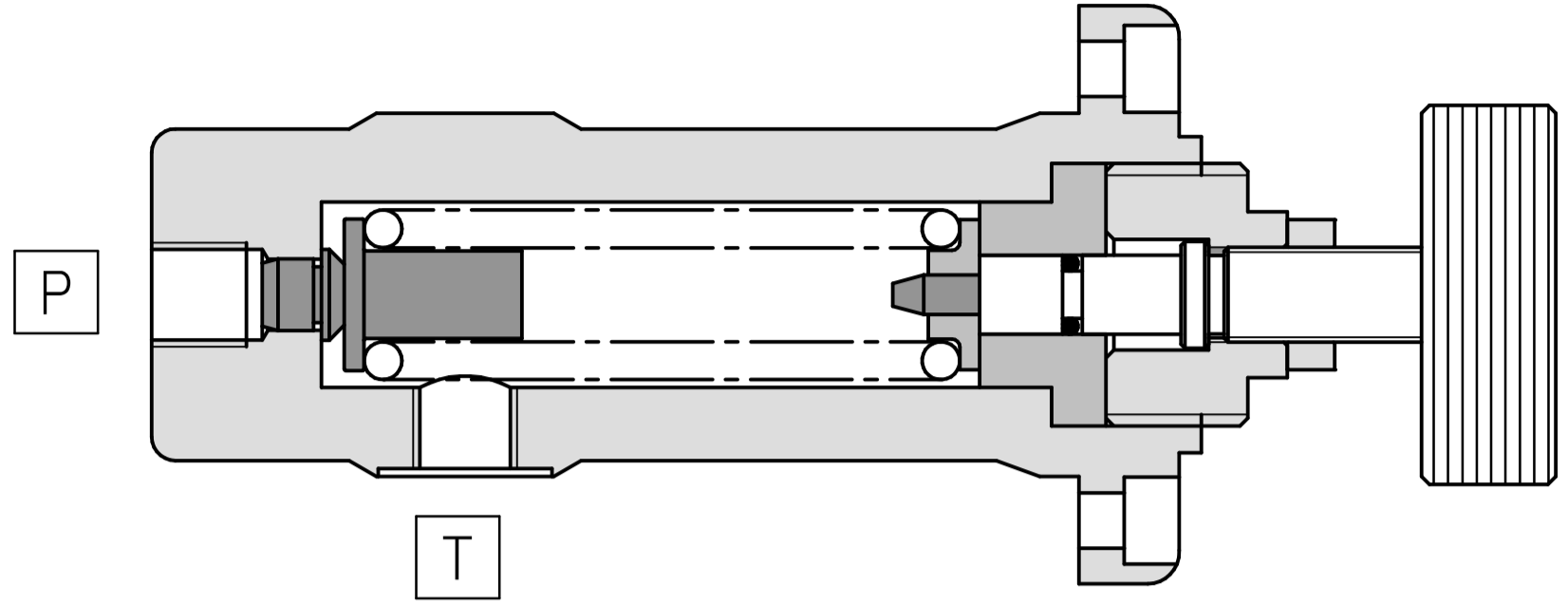
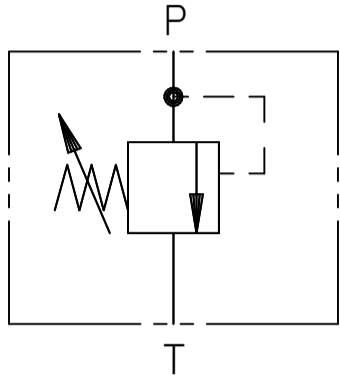


FLUID POWER SYMBOL



Application

Pressure Relief valves are used to limit the pressure in the system as set on the valve. Direct Relief Valves are applicable in systems where quick pressure release is of prime concern for safety. This is an economical solution for systems having small flows. The valve is a zero leak valve due to the metal sealing of the poppet on the seat. The CI75 can also be used for pilot systems.

Operation

As with all direct acting pressure relief valves, when the pressure at the inlet (P) exceeds the spring force set by the adjuster, the poppet moves back, opening the inlet (I) to outlet (T). This

relieves the pressure to tank. The dampening buffer on the nose of the valve dampens the vibrations caused by pressure variations on the valve. This gives it a smooth opening and closing characteristic with minimum chatter.

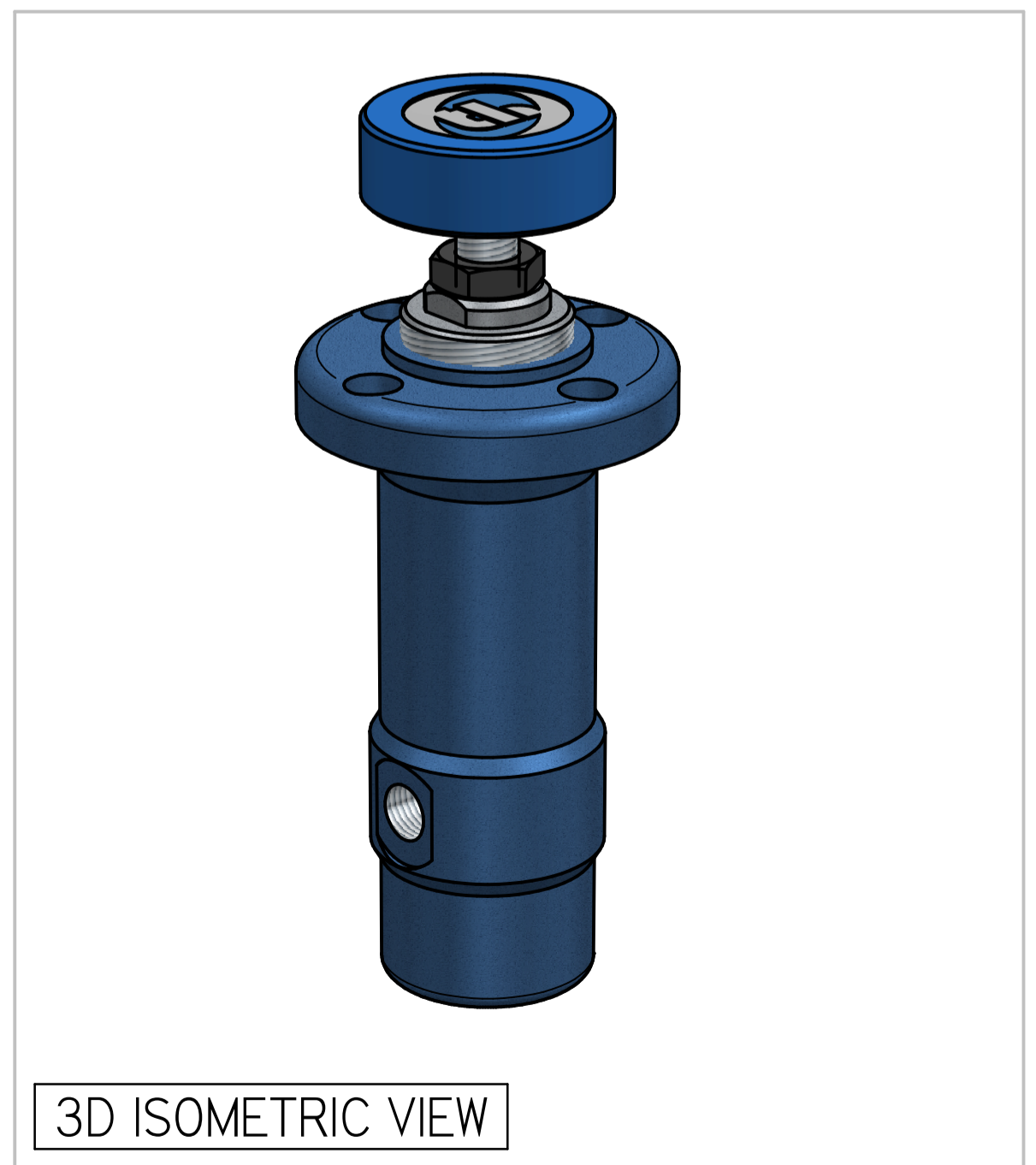
Features

Matched ground and hardened working parts give a long and trouble-free life. Consistent stable operation providing low pressure over ride even with increasing flows. Cartridge type construction gives maximum flexibility in mounting.

Specifications

Figures based on: Oil Temp = 40°C Viscosity = 40 cSt

Rated Flow	17 lpm
Max Pressure	210 bar
Cartridge Material	Working parts : Hardened, ground steel External surfaces : Zinc plated
Weight (Cartridge only)	CI75: 1.500 kg
Manifold Material	SG Iron (upto 350 bar)
Torque into Cavity	45 Nm
Mounting	Line
Filtration Level	BS5540/4 Class 18/13 (25µ nominal)
Operating Temp	-20°C to +70°C (Standard Seals)
Leakage	Less than 0.3 millilitres/min (5 dpm)
Viscosity Range	5 to 500 cSt



3D ISOMETRIC VIEW

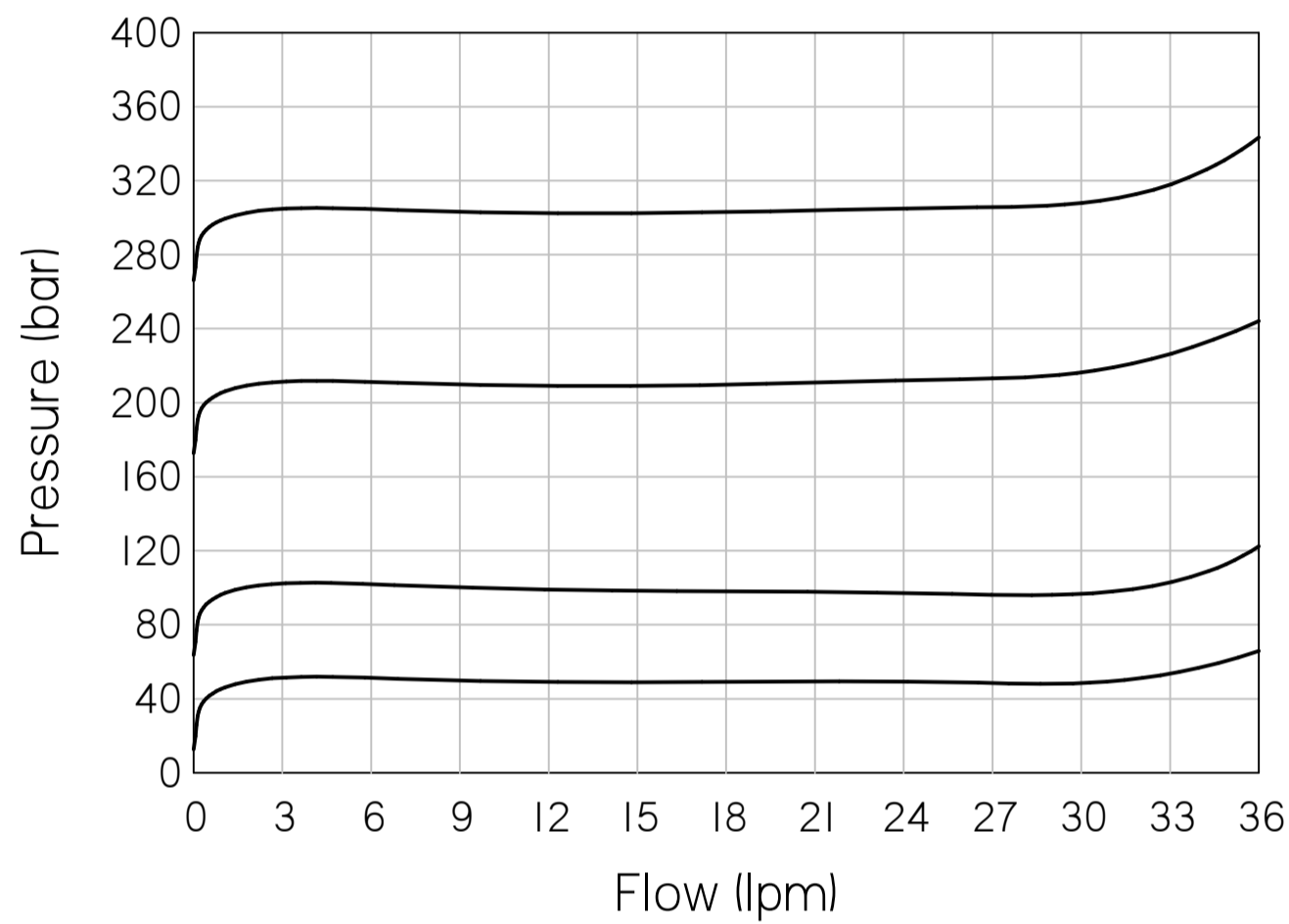
Where measurements are critical request certified drawings. We reserve the right to change specifications without notice.

TO ORDER

C175 K 2W 20

BASIC CODE	_____	PRESSURE RANGE
ADJUSTMENT	_____	05: 5 to 50 bar
P: CAP		10: 10 to 100 bar
K: KNOB		20: 20 to 200 bar
PORT SIZE	_____	30: 30 to 350 bar
2W: 1/4 BSP PORTS		
3W: 3/8 BSP PORTS		
OMIT FOR CARTRIDGE		

PRESSURE CHARACTERISTICS

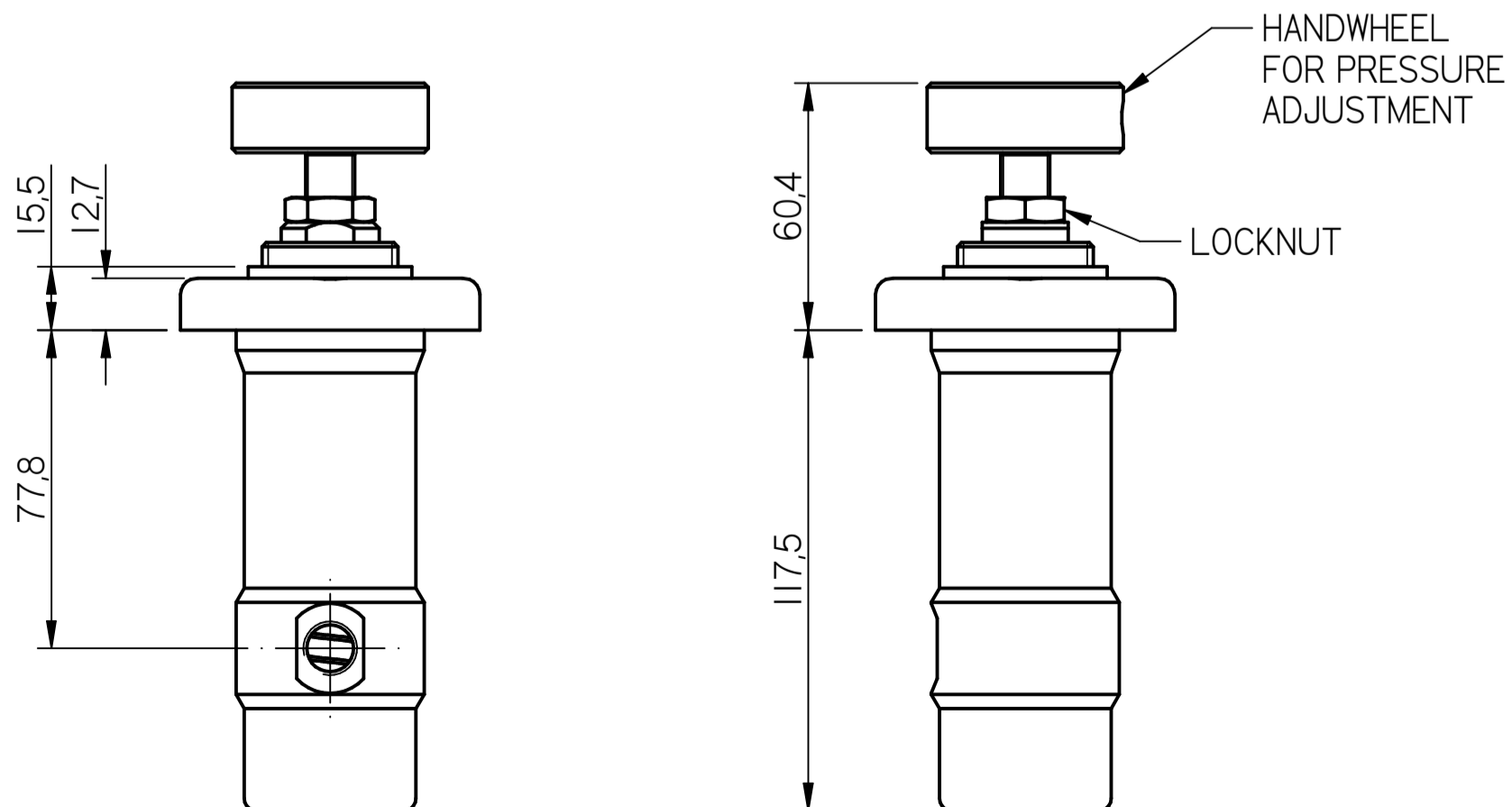
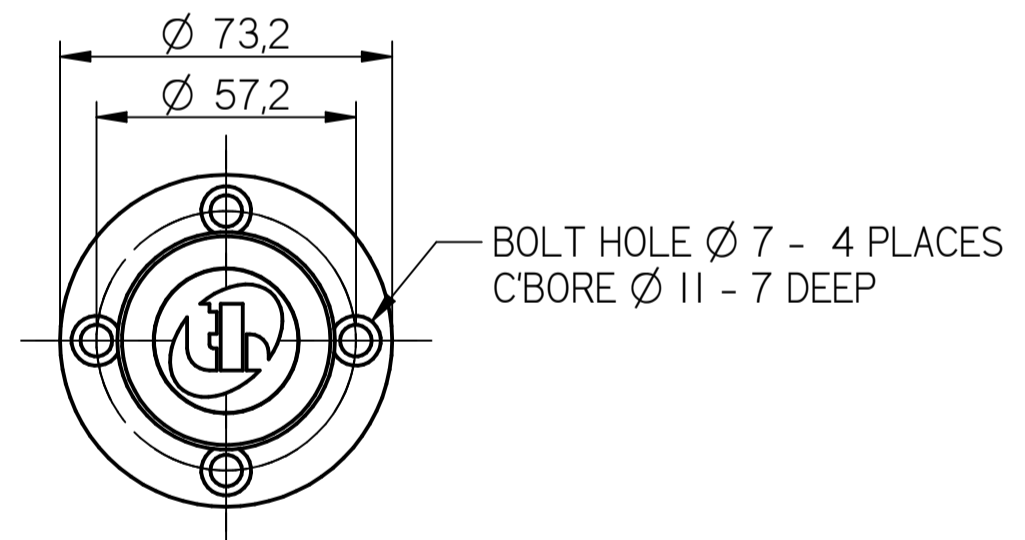


COMPLETE VALVE 1/4" BSP PORTS

BASIC CODE: C175

ONLY Body Part Numbers (BSP)

Aluminium	SG Iron
-	1/4" Z10121



Where measurements are critical request certified drawings. We reserve the right to change specifications without notice.