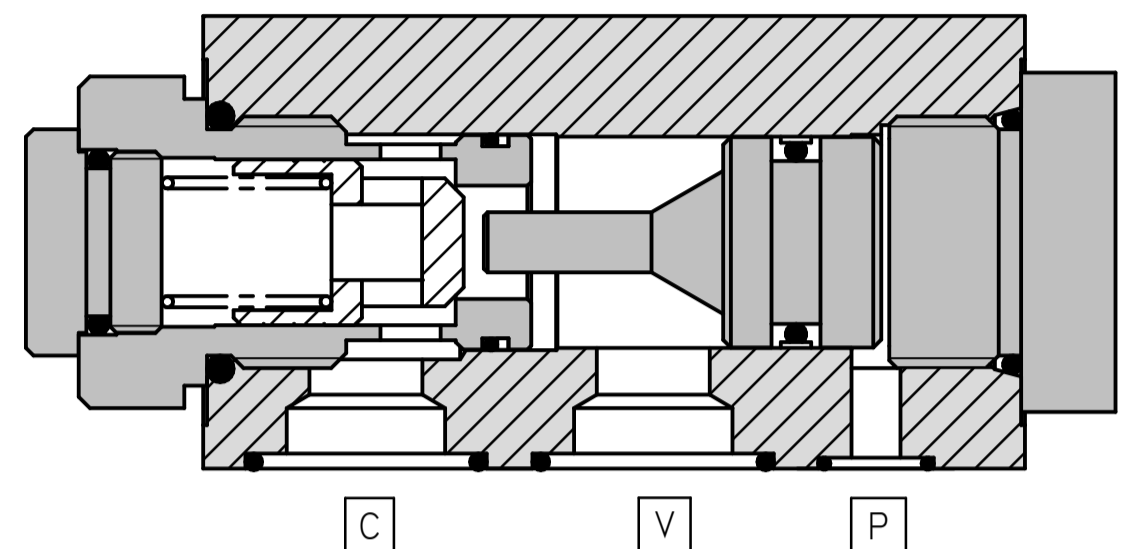
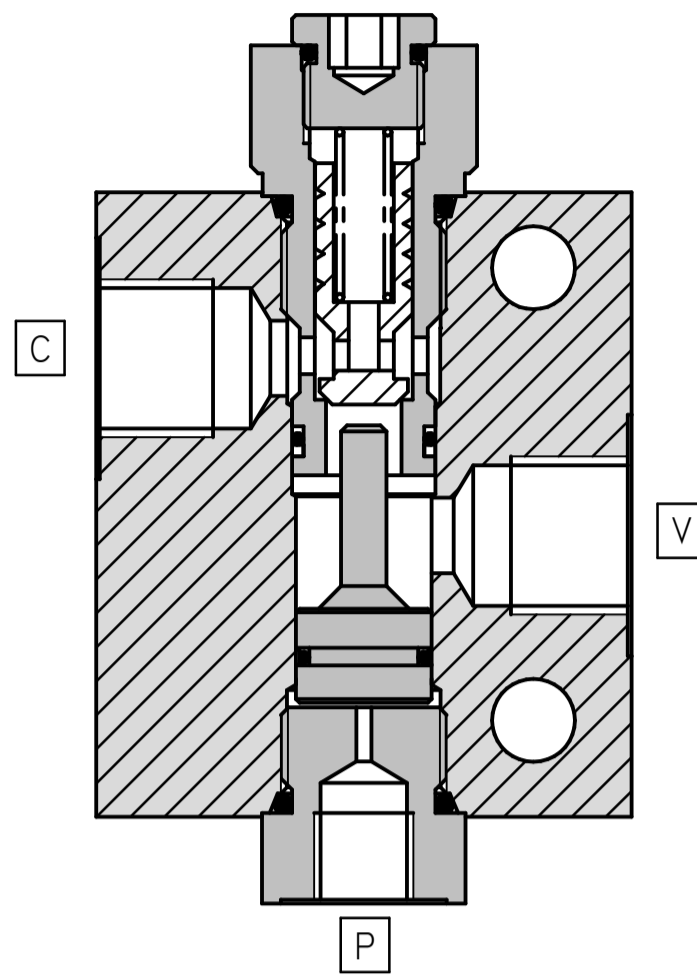
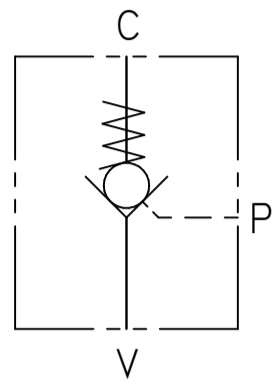


FLUID POWER SYMBOL



**Application**

Pilot check valves allow flow to pass in one direction, with a low pressure drop, and then prevent reverse flow until pilot pressure is applied. There are many applications for this valve type, the most common being to lock and hold a cylinder, or another hydraulic actuator, in position.

**Operation**

Pressure on Port V opens the check cartridge against spring force, allowing the flow to Port C. Reverse flow is prevented by the cartridge poppet reseating. Pressure applied to the Pilot Port P will allow the pusher to overcome Port C pressure and open the flow from Port C to Port V.

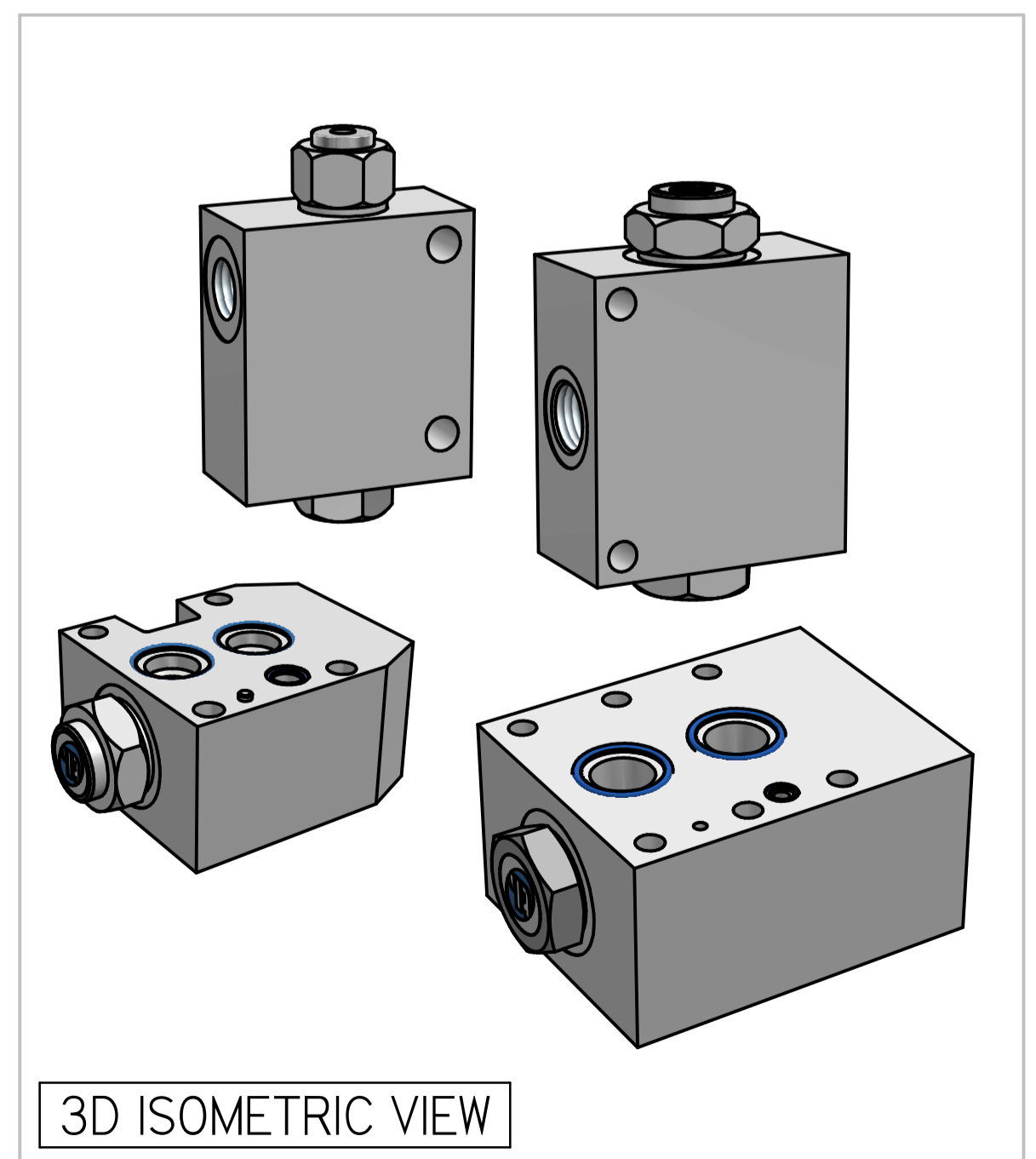
**Features**

Hardened and ground poppet gives excellent flow capability for valve size, positive sealing and long working life. Cartridge construction allows line mounting as well as easy servicing.

**Specifications**

Figures based on: Oil Temp = 40°C Viscosity = 40 cSt

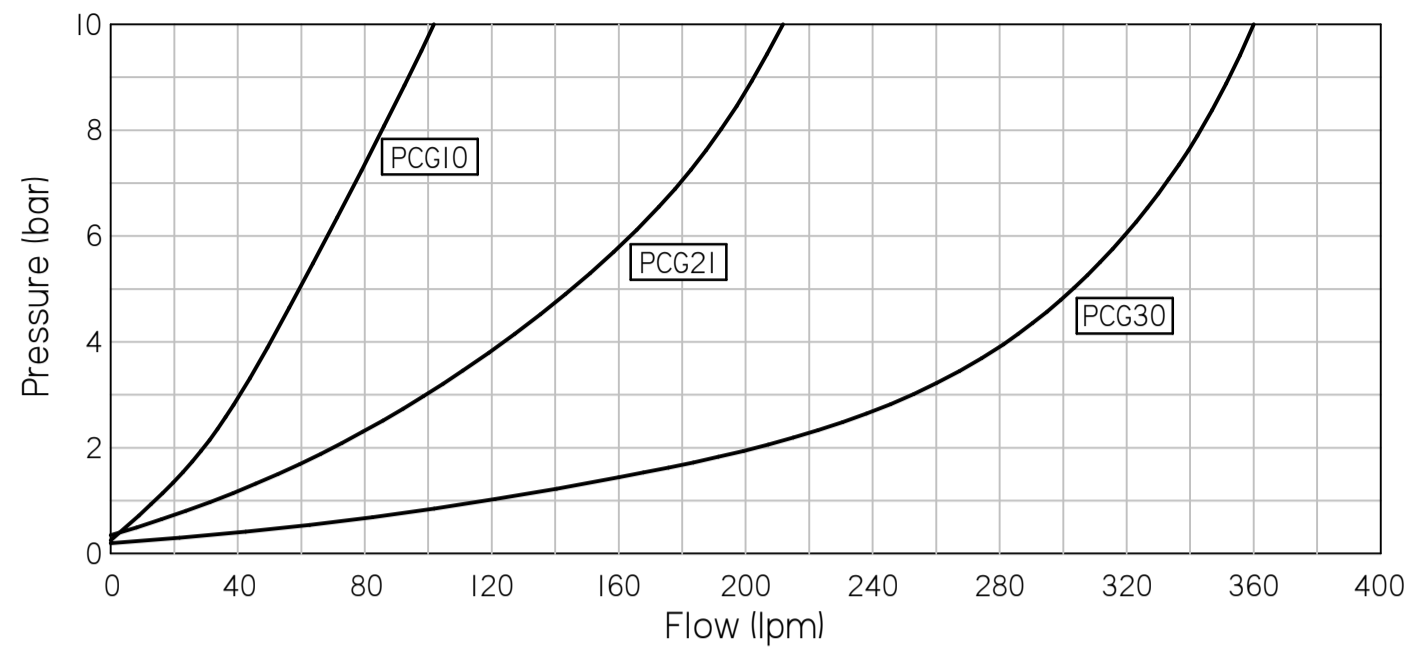
Rated Flow	See Table
Max Pressure	350 bar
Cracking Pressure	1 bar
Pilot Ratio	3:1
Weight	See Table
Manifold Material	Aluminium (upto 250 bar) Add Suffix '729' for SG Iron (350 bar)
Mounting	Line/Subplate
Seal Kit Number	See Table
Filtration Level	BS5540/4 Class 18/13 (25µ nominal)
Operating Temp	-20°C to +90°C (Standard Seals)
Leakage	Less than 0.3 millilitres/min (5 dpm)
Viscosity Range	5 to 500 cSt



3D ISOMETRIC VIEW

Where measurements are critical request certified drawings. We reserve the right to change specifications without notice.

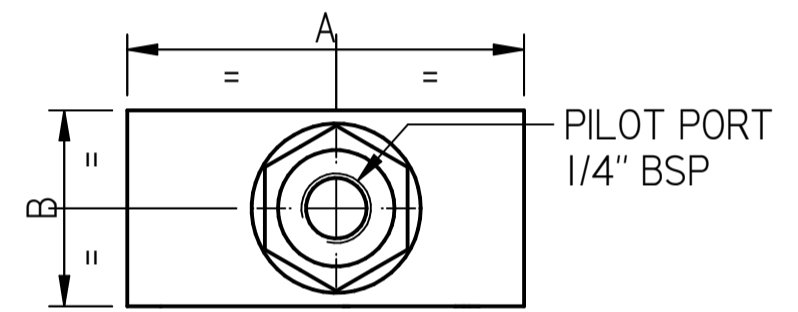
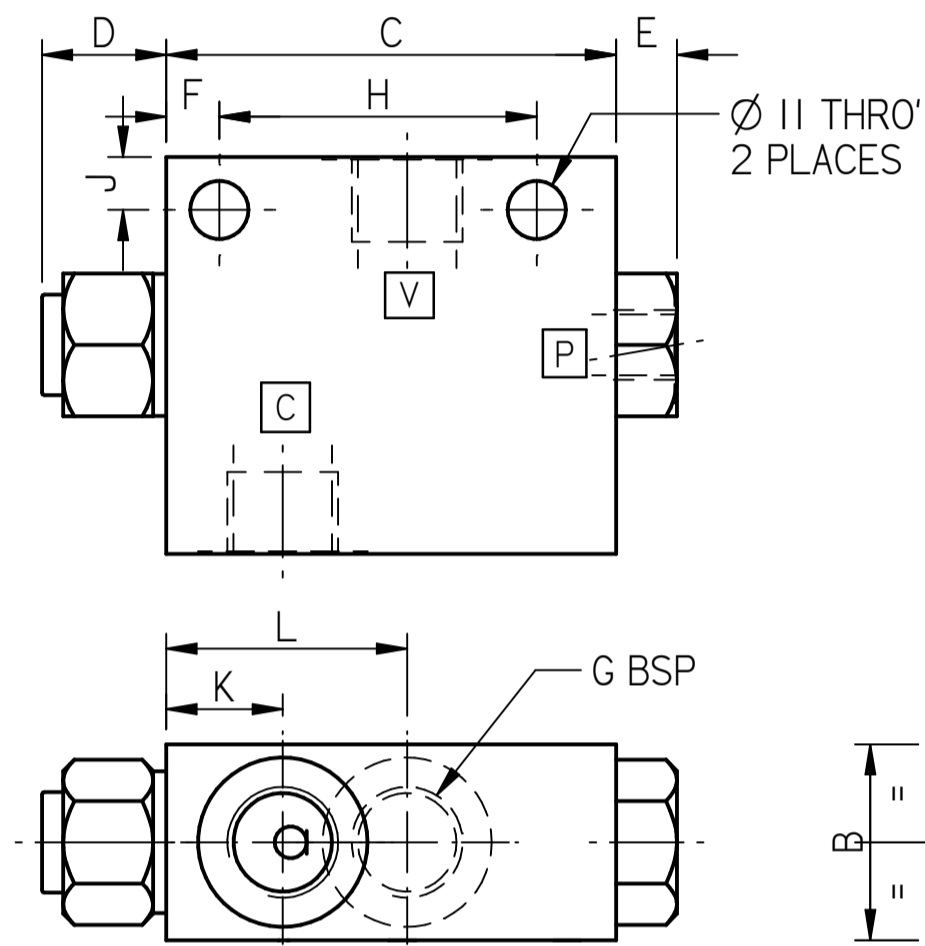
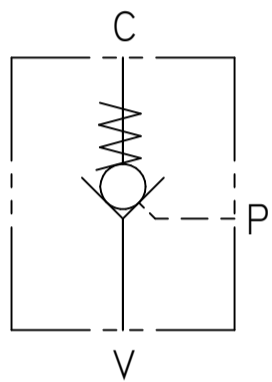
**PRESSURE CHARACTERISTICS**



**COMPLETE VALVE**

BSP PORTS

BASIC CODE: PC



5

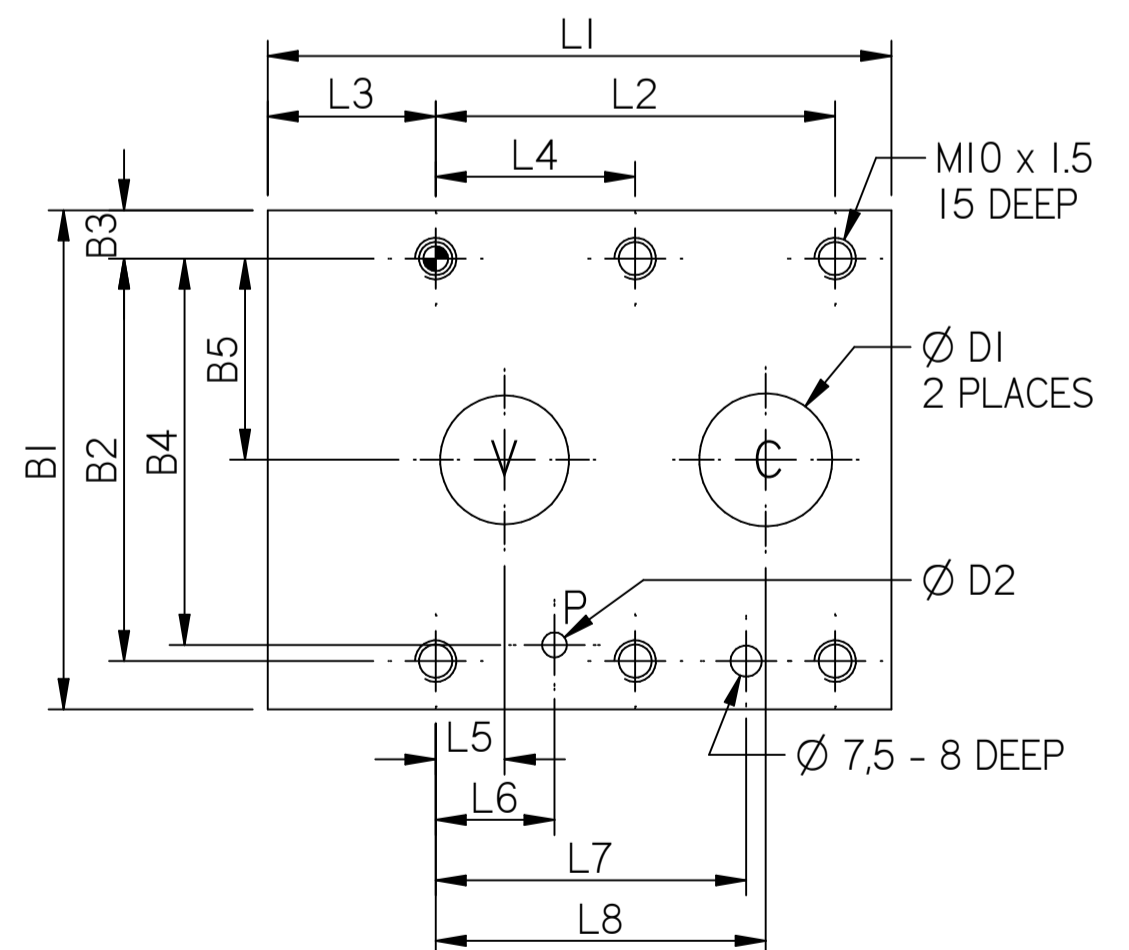
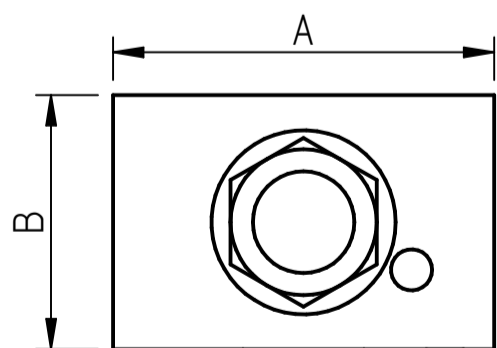
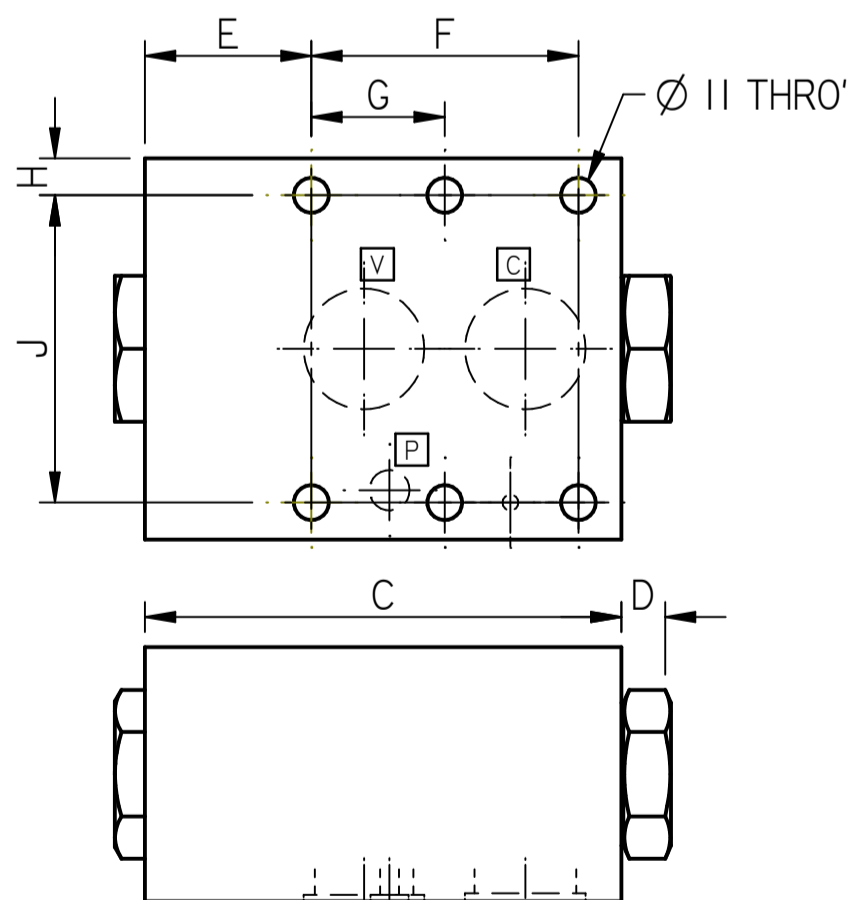
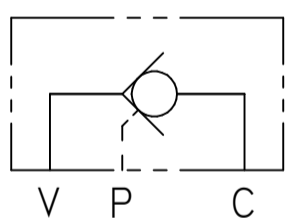
Order Code	Flow	G	A	B	C	D	E	F	H	J	K	L	Seal Kit	Weight
PC10 4W	80	1/2"	75	40	85	23.5	11.5	10	60	10	22	45.5	SKPC10	0.85 Kg
PC20 6W	200	1"	100	50	110	24	12	10	90	10	25	54.3	SKPC21	1.75 Kg

**COMPLETE VALVE**

SUBPLATE

**SUBPLATE DIMENSIONS**

BASIC CODE: PCG



Code	Pressure	Flow	A	B	C	D	E	F	G	H	J	Seal Kit	Weight
PCG 10	350 bar	80	85	40	100	7	42.5	43	-	9.4	66.5	SKPCG10	2.3 Kg
PCG 20	350 bar	200	96	60	109	12	38	60.3	-	8.3	79.4	SKPCG21	4.0 Kg
PCG 30	350 bar	350	120	80	150	16	53	84.1	42	11.6	96.8	SKPCG30	9.3 Kg

SUBPLATE SIZE	L1	L2	L3	L4	L5	L6	L7	L8	B1	B2	B3	B4	B5	DI	D2
10	85	42.9	42.5	-	7.1	21.4	31.8	35.7	85	66.7	9.3	58.7	33.5	13	6
20	89.3	60.3	38	-	11.1	20.8	44.5	49.2	97.9	79.4	9.15	73	39.7	22	6
30	150	84.1	52.4	42	16.6	24.6	62.7	67.4	120	96.8	11.6	92.9	48.4	31	6

Where measurements are critical request certified drawings. We reserve the right to change specifications without notice.