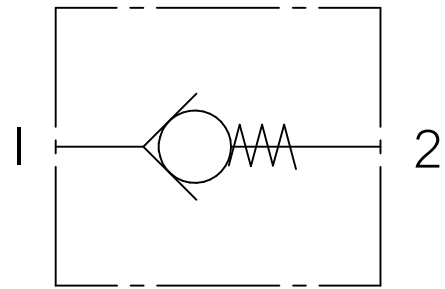
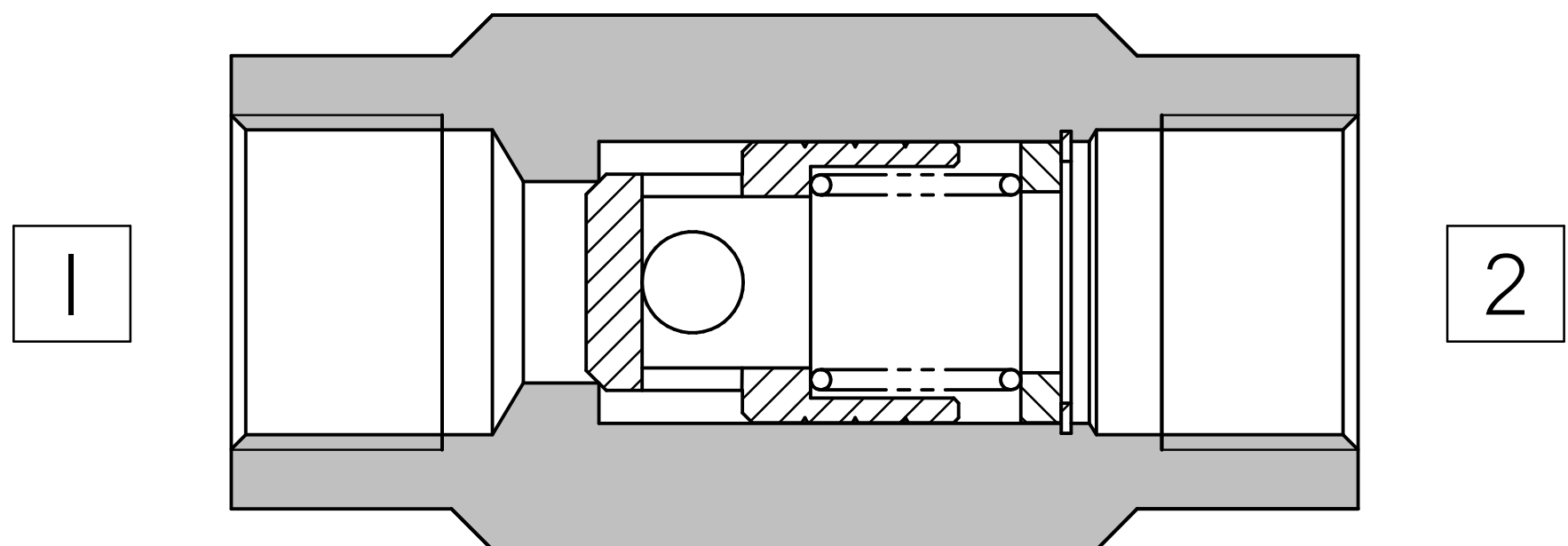


FLUID POWER SYMBOL



5



**Application**

Check valves allow flow to pass in one direction, with a low pressure drop, then prevent reverse flow in the other direction. These line mounted check valves give control over flows in a hydraulic circuit. Commonly used for anti-cavitation, cooler bypass, preventing reverse suction at the pump outlet and accumulator holding.

**Operation**

Pressure at the inlet port (Port 1) causes the poppet to lift against the spring force, allowing flow to the outlet port (Port 2). Reverse flow is prevented by the poppet reseating.

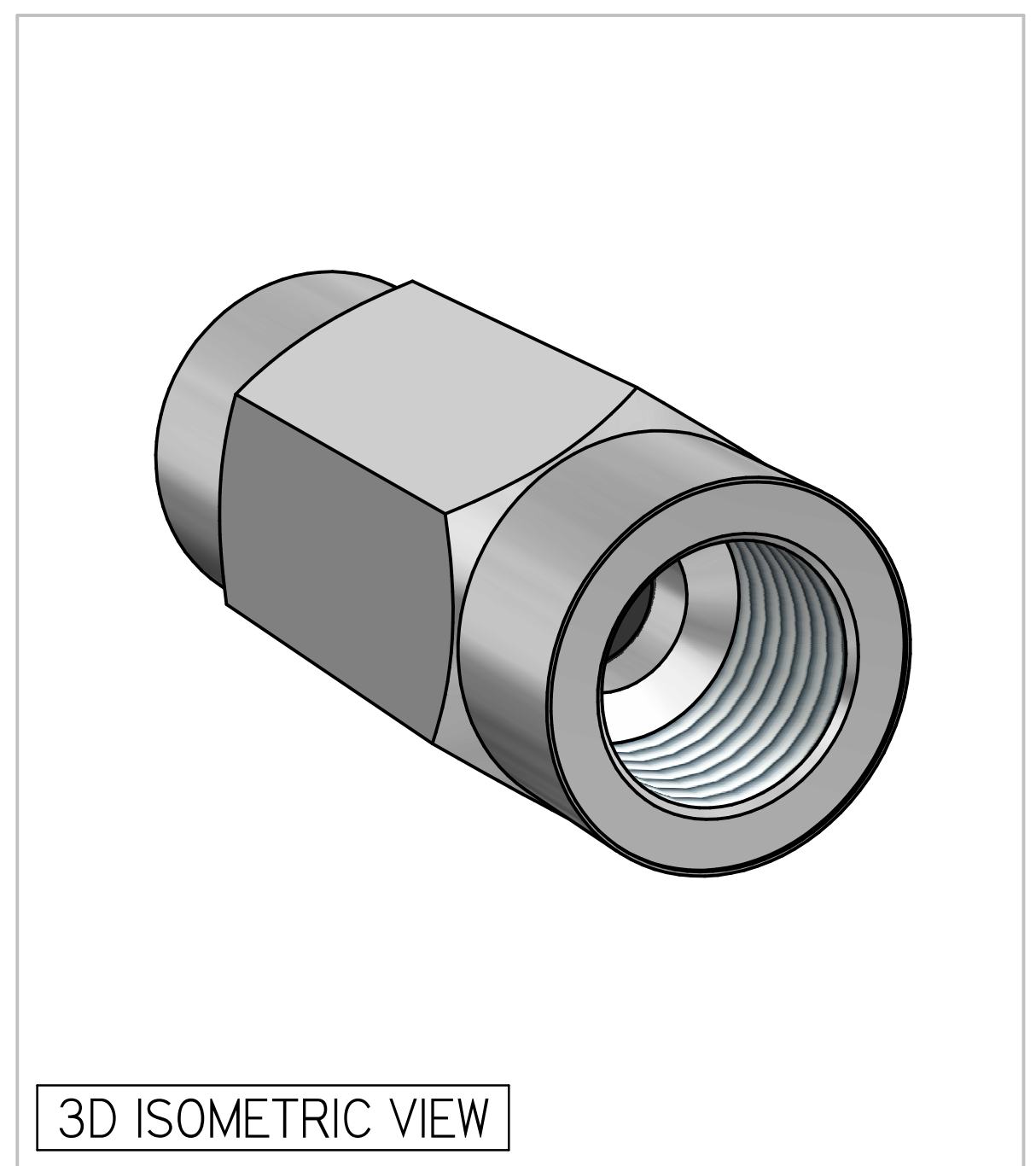
**Features**

These valves use hardened and precision ground poppets. This provides an excellent flow capability and shut off characteristics with a good tolerance to particle (dirt) contamination prevalent in most hydraulic power packs and systems. The valve housings have BSP ports for immediate installation into hydraulic systems.

**Specifications**

Figures based on: Oil Temp = 40°C Viscosity = 40 cSt

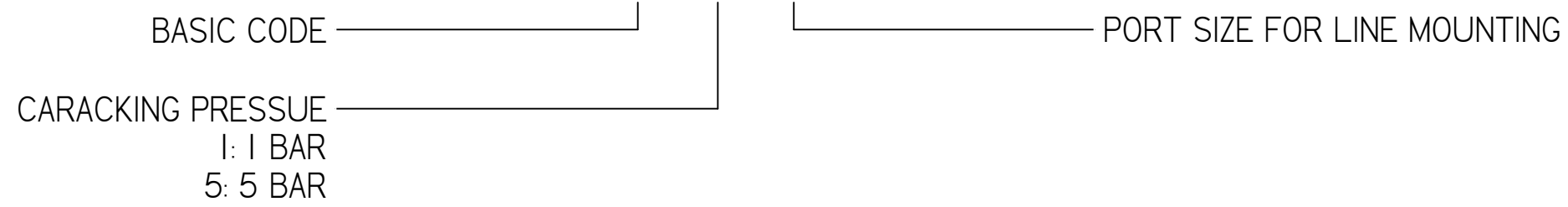
Rated Flow	See Graph
Max Pressure	See Chart
Body Material	Zinc plated steel
Mounting Position	Line mounted
Weight	See Chart
Filtration Level	BS5540/4 Class 18/13 (25µ nominal)
Operating Temp	-20°C to +90°C
Leakage	Less than 0.3 millilitres/min (5 dpm)
Viscosity Range	5 to 500 cSt



Where measurements are critical request certified drawings. We reserve the right to change specifications without notice.

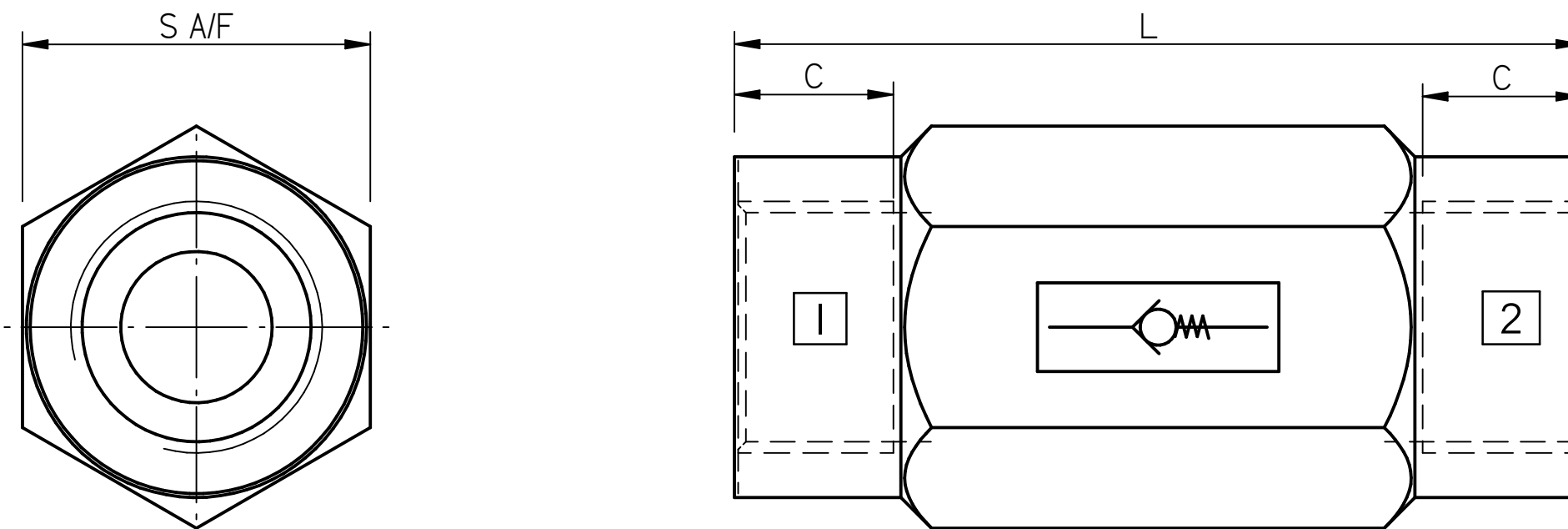
**TO ORDER**

**CVT 1 10W**



**COMPLETE VALVE** VARIOUS BSP PORTS

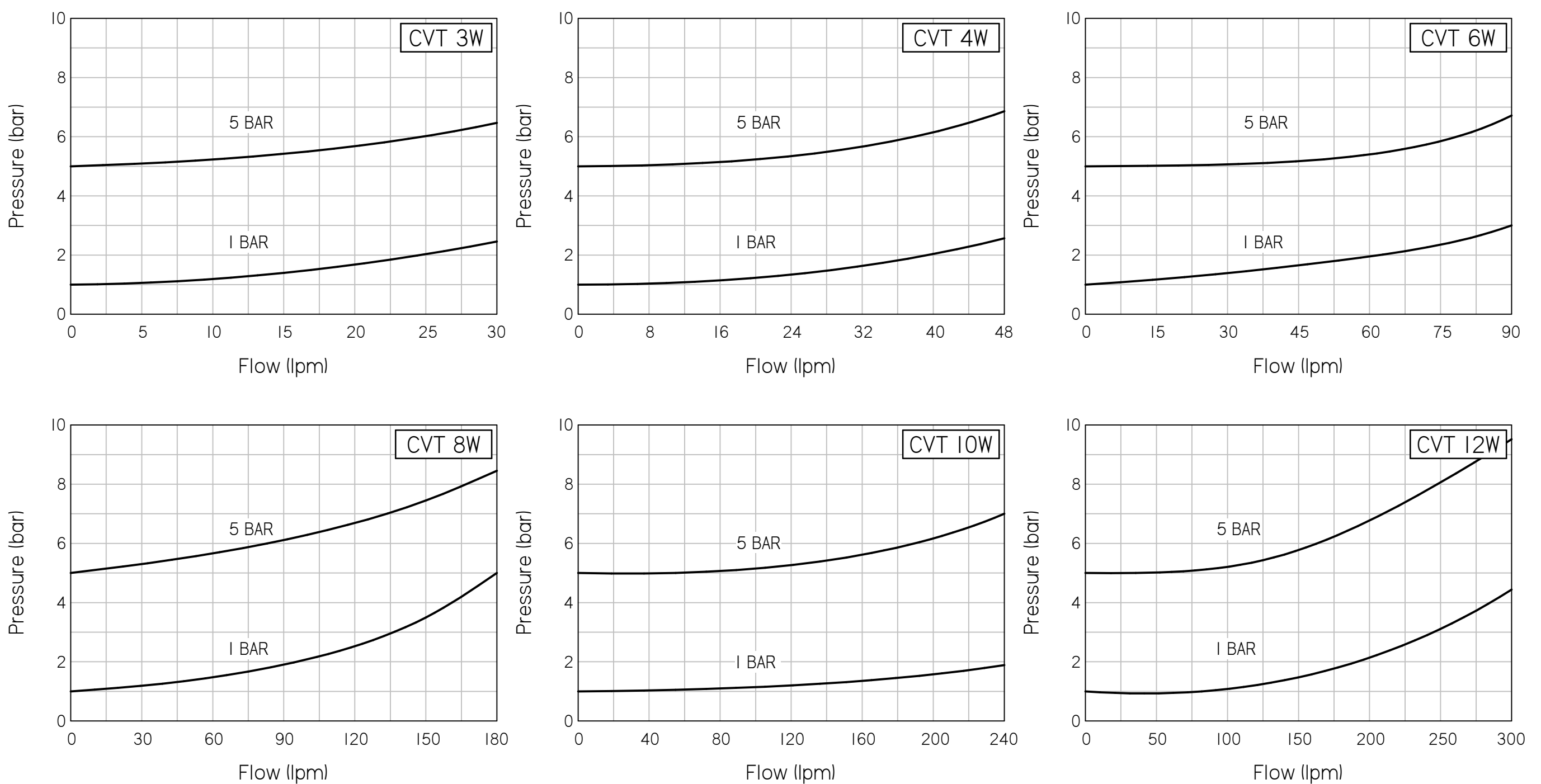
BASIC CODE: CVT \*\*\*



5

Ordering Code	Pressure	G	L (mm)	C (mm)	S A/F (mm)	Weight
CVT * 2W	350 bar	1/4" BSP	62	12	19.0	0.10 Kg
CVT * 3W	350 bar	3/8" BSP	80	12	27.0	0.28 Kg
CVT * 4W	350 bar	1/2" BSP	85	17	32.0	0.41 Kg
CVT * 6W	300 bar	3/4" BSP	105	19	36.0	0.57 Kg
CVT * 8W	300 bar	1" BSP	112	21	46.0	1.00 Kg
CVT * 10W	200 bar	1-1/4" BSP	142	26	55.0	1.80 Kg
CVT * 12W	200 bar	1-1/2" BSP	155	26	63.5	2.70 Kg

**PRESSURE CHARACTERISTICS**



Where measurements are critical request certified drawings. We reserve the right to change specifications without notice.