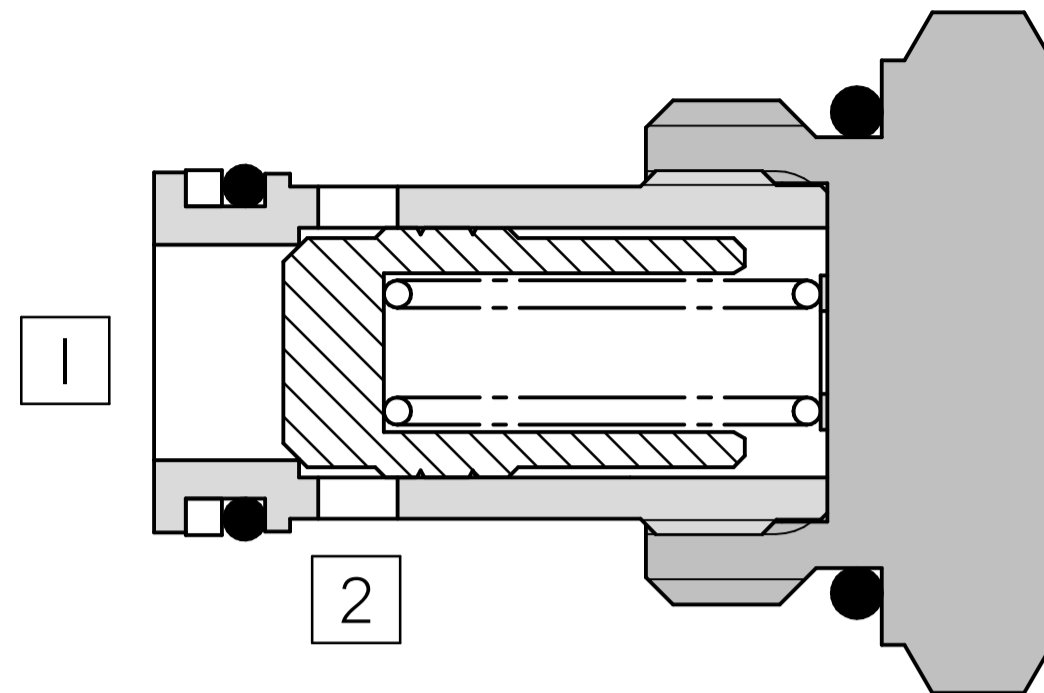
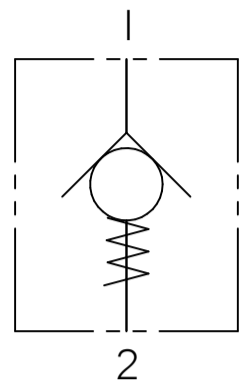
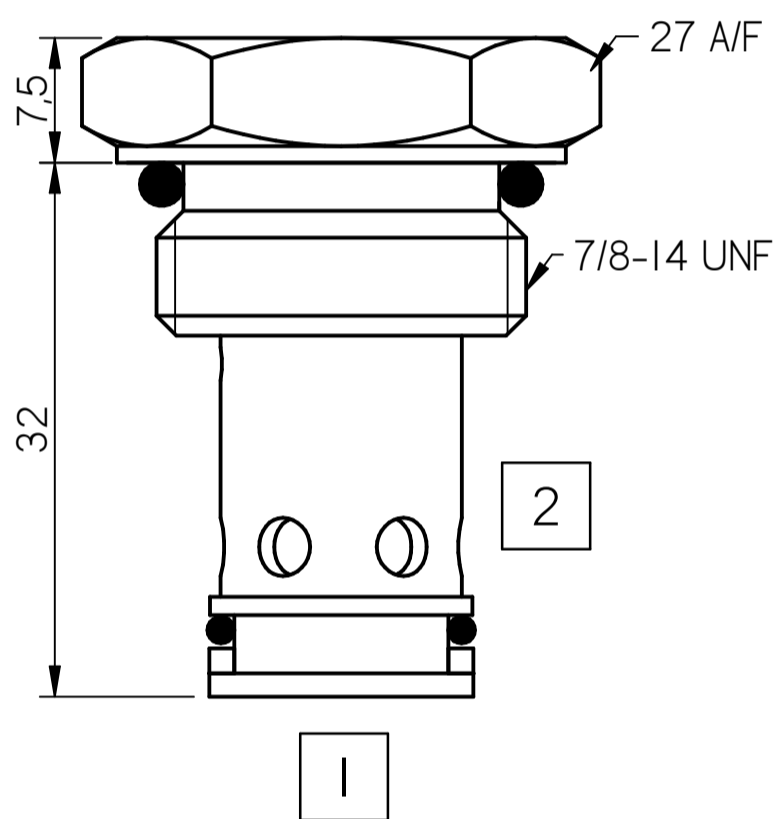


FLUID POWER SYMBOL



5



Application

These cartridge check valves allow unidirectional flow at a low pressure drop. They fit into simply machined cavities and are therefore perfect for installation into custom made hydraulic circuits, manifold blocks or other hydraulic equipment for load sense or low flow applications.

Features

Hardened and ground poppets and high quality balls along with machined and hardened seats give excellent flow reseal characteristics with zero leakage. Installation is quick and easy due to the simplicity of the cavities.

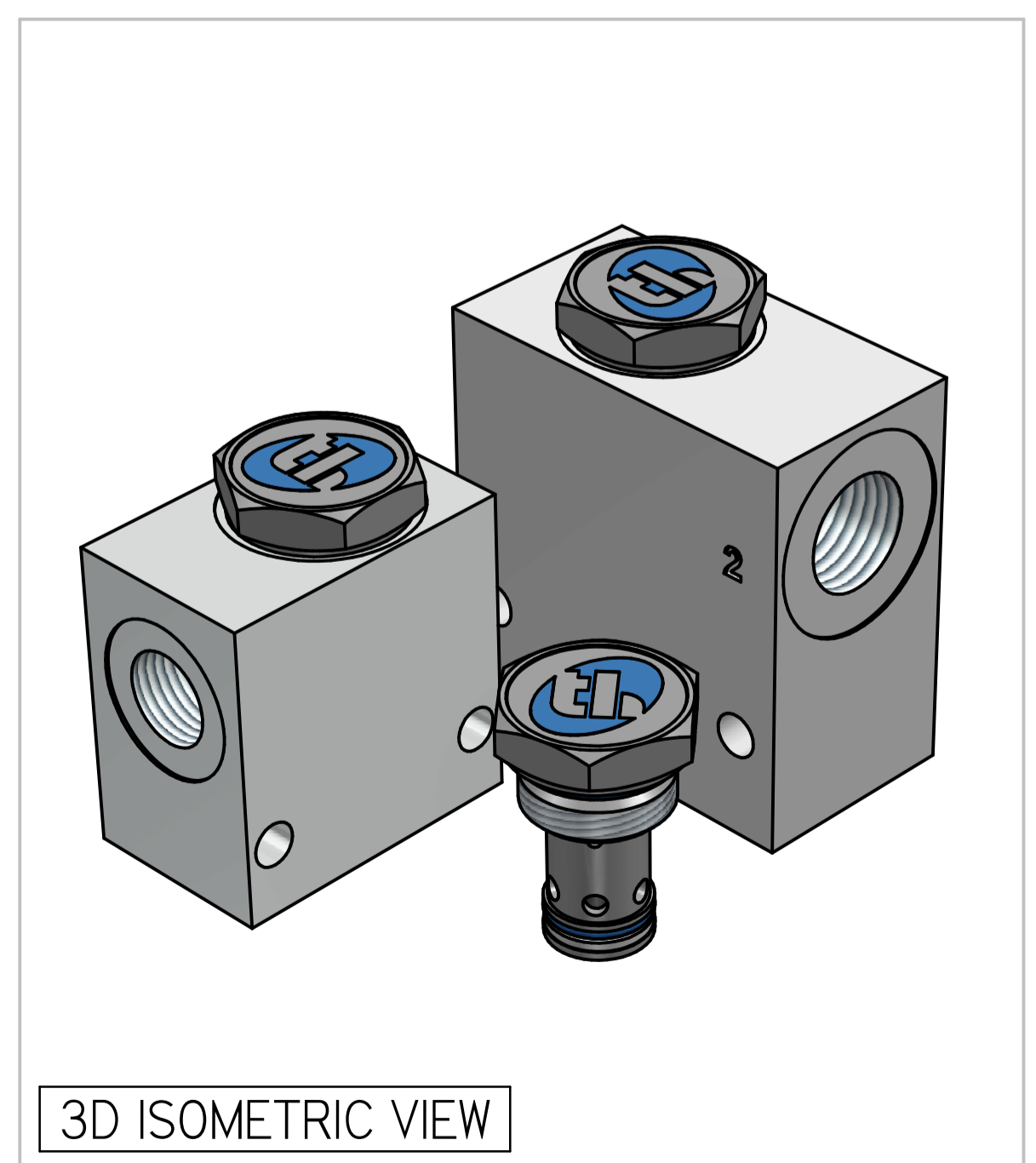
Operation

When the inlet pressure acts on the poppet via Port 1, the flow is allowed from Port 1 to Port 2 with cracking pressures as specified bar. Reverse flow is prevented by the reseating of the ball/poppet onto its seat.

Specifications

Figures based on: Oil Temp = 40°C Viscosity = 40 cSt

| | |
|-------------------------|---------------------------------------------------------------------------|
| Max Flow | 60 lpm |
| Max Pressure | 350 bar |
| Cartridge Material | Working parts : Hardened, ground steel External surfaces : Zinc plated |
| Weight (Cartridge only) | CVI 10: 0.060 kg |
| Cavity Number | SAE10-2 (Refer Cavities Section) |
| Manifold Material | Aluminium (upto 250 bar) Add Suffix '729' for SG Iron (350 bar) |
| Torque into Cavity | 45 Nm |
| Mounting | Line |
| Seal Kit Number | SKCV110 (Nitrile) SKCKV110 V (Viton®) |
| Filtration Level | BS5540/4 Class 18/13 (25µ nominal) |
| Operating Temp | -20°C to +90°C (Standard Seals) |
| Leakage | Less than 0.3 millilitres/min (5 dpm) |
| Viscosity Range | 5 to 500 cSt |



3D ISOMETRIC VIEW

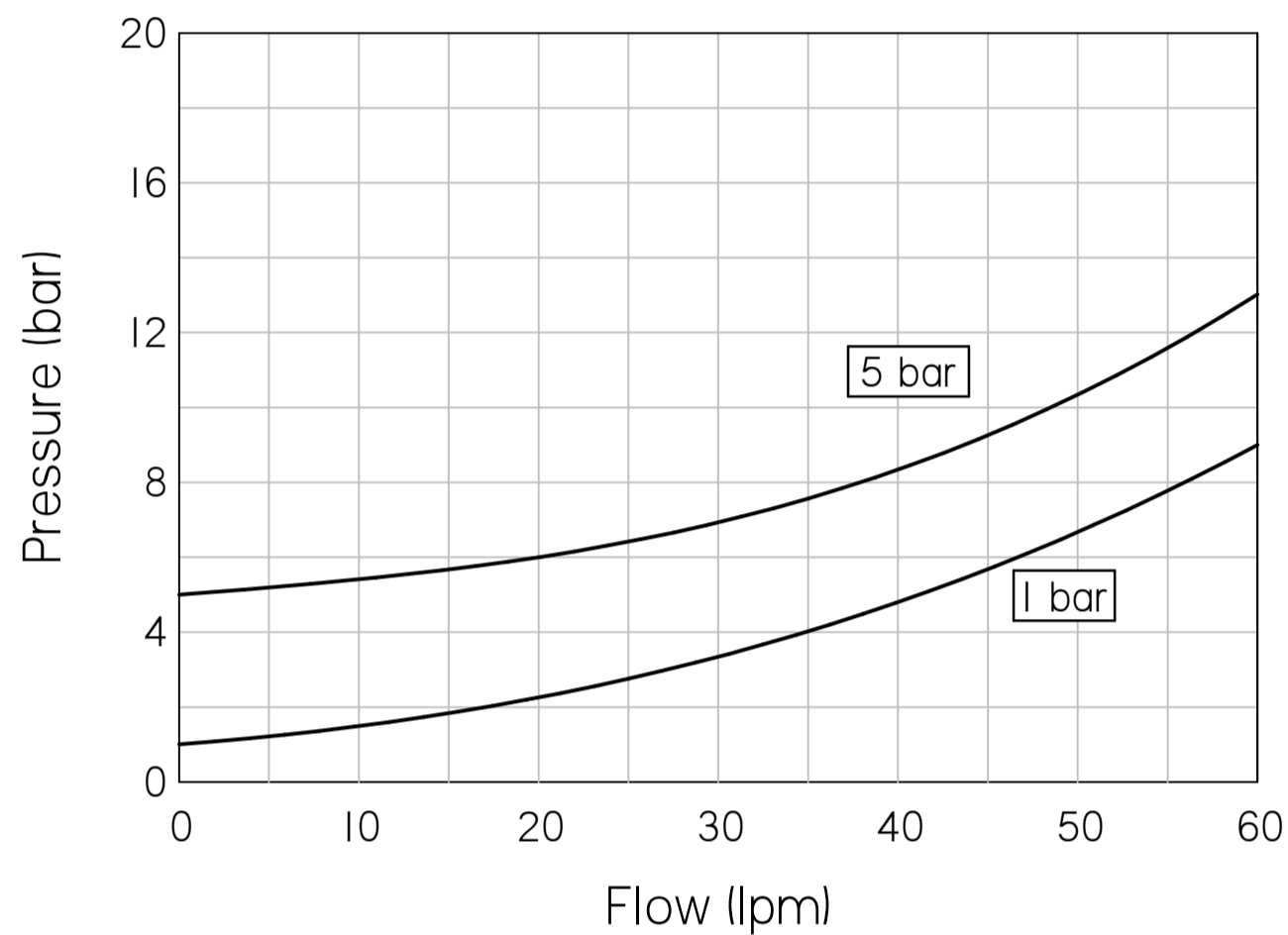
Where measurements are critical request certified drawings. We reserve the right to change specifications without notice.

TO ORDER

CVI 10 | 4W N

| | | | |
|-------------------|----------|-----------|--------------------|
| BASIC CODE | CVI 10 | SEAL KIT | N: NITRILE |
| CARTRIDGE SIZE | SIZE 10 | V: VITON | |
| CARACKING PRESSUE | 1: 1 BAR | PORT SIZE | 3W: 3/8 BSP PORTS |
| | 5: 5 BAR | | 4W: 1/2 BSP PORTS |
| | | | OMIT FOR CARTRIDGE |

PRESSURE CHARACTERISTICS



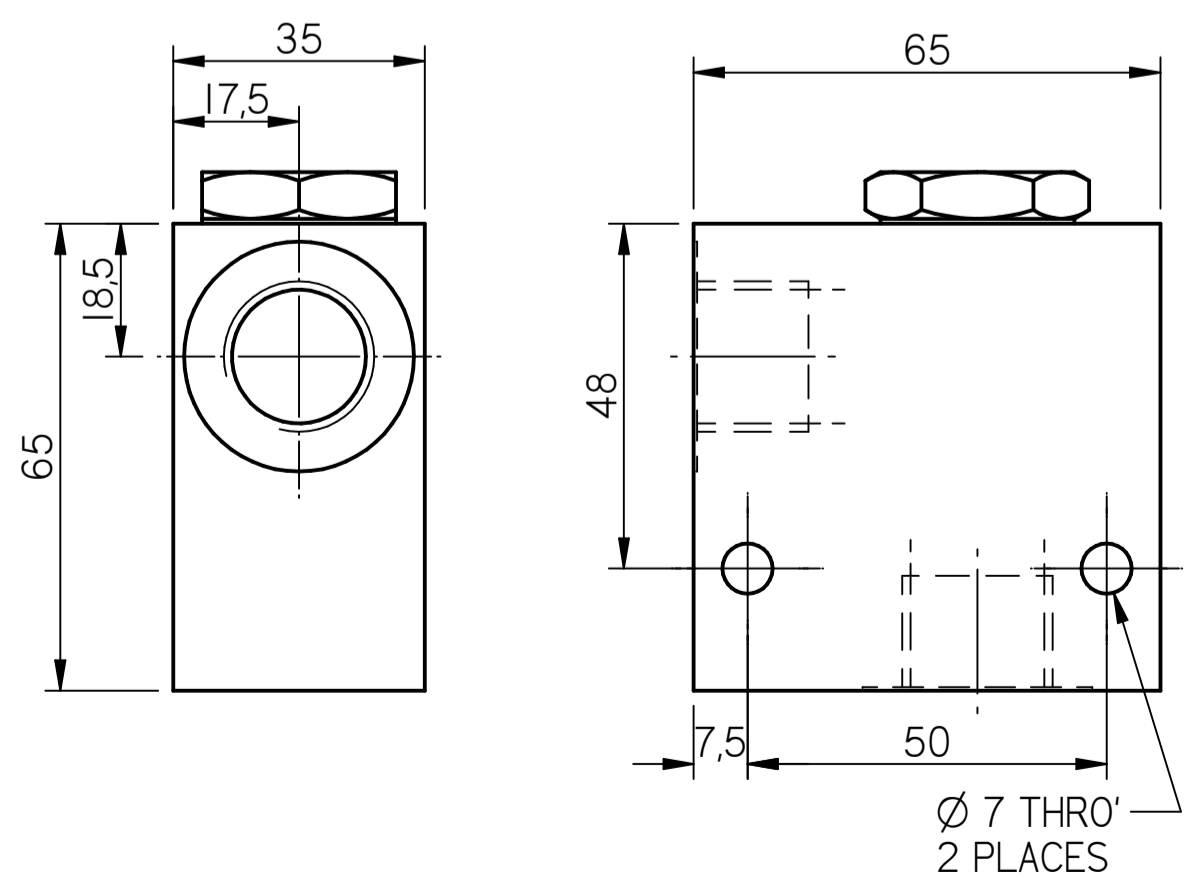
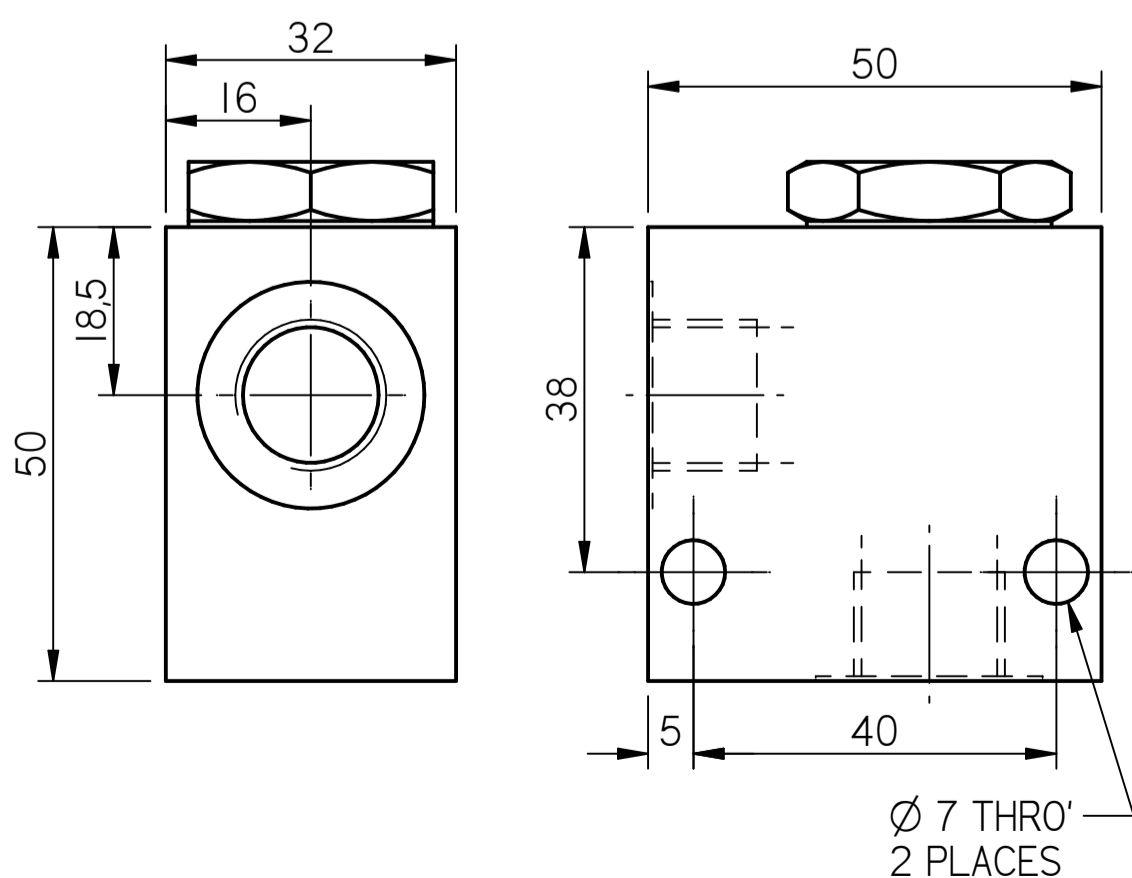
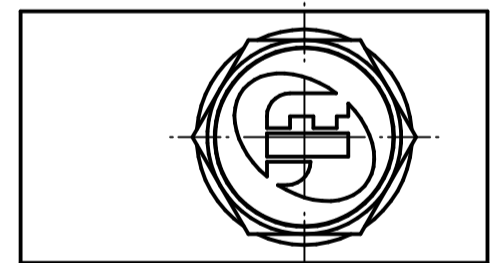
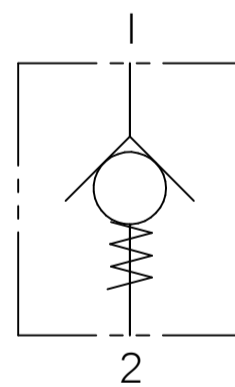
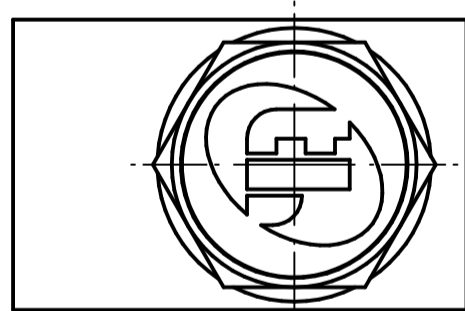
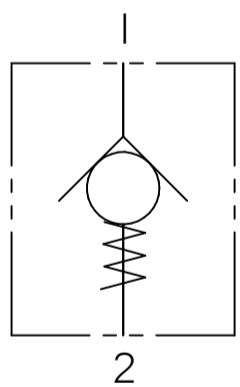
5

COMPLETE VALVE 3/8" BSP PORTS

BASIC CODE: CVI 10 3W
ONLY Body Part Numbers (BSP)
Aluminium 3/8" Z10221 SG Iron 3/8" Z10221S

COMPLETE VALVE 1/2" BSP PORTS

BASIC CODE: CVI 10 4W
ONLY Body Part Numbers (BSP)
Aluminium 1/2" Z10212 SG Iron 1/2" Z10212S



Where measurements are critical request certified drawings. We reserve the right to change specifications without notice.