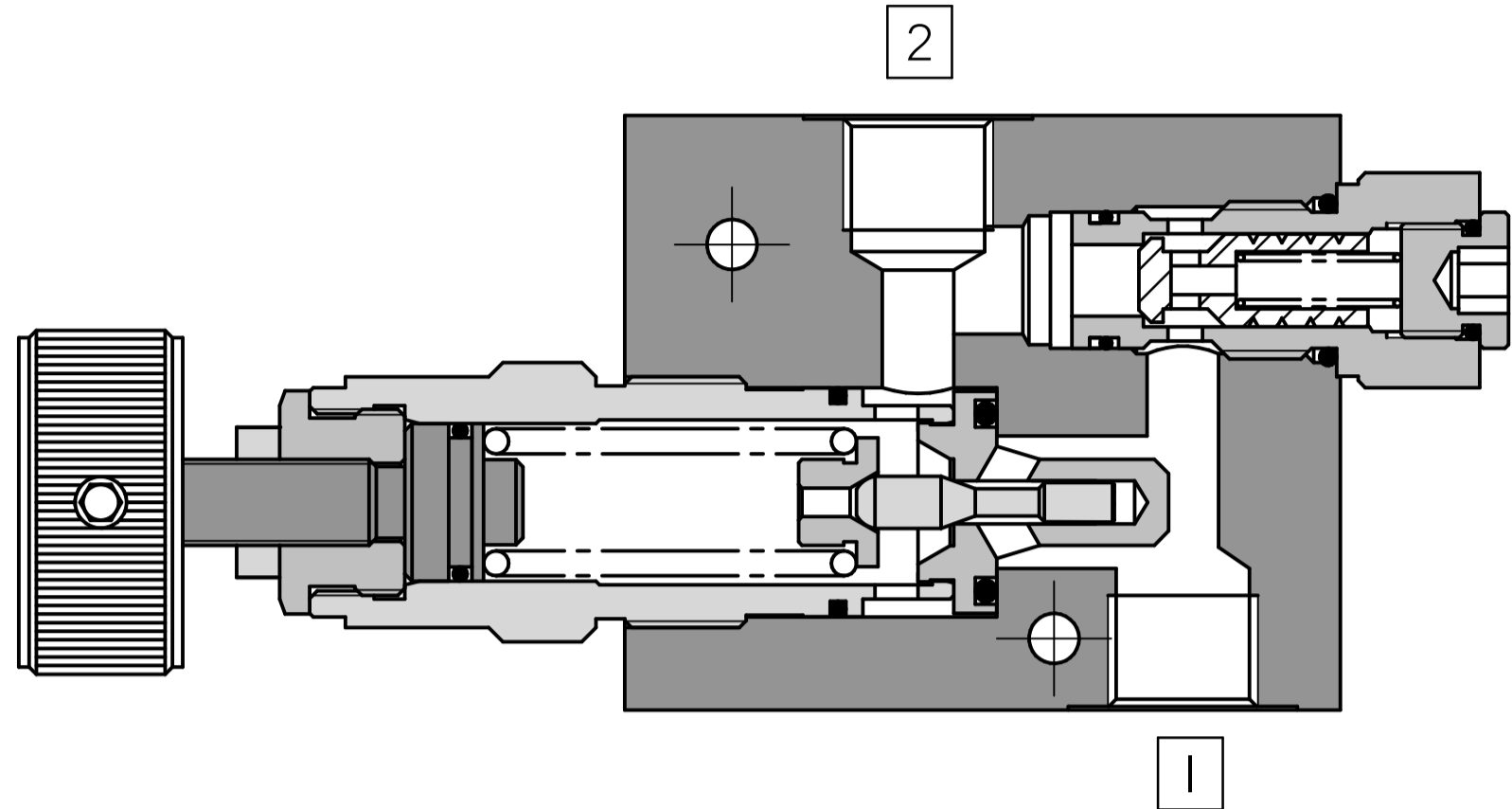
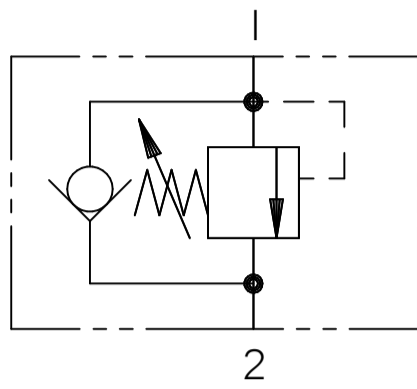


FLUID POWER SYMBOL



4

**Application**

Counterbalance valves give static and dynamic control of loads by regulating flows in or out of hydraulic actuators. They prevent load runaway or allow for thermal expansion of the hydraulic fluid in the system. They can also be used to develop back pressure in applications such as plastic moulding to improve the colour quality of the polymer mix

**Operation**

As in the case of Direct Acting Valves, when the pressure at Port I exceeds the setting of the relief valve, the poppet will slide back and open the Inlet to the Outlet. Maintaining a steady back pressure on the inlet port and controlling the motion. The check valve allows the reverse flow of oil to pass unrestricted.

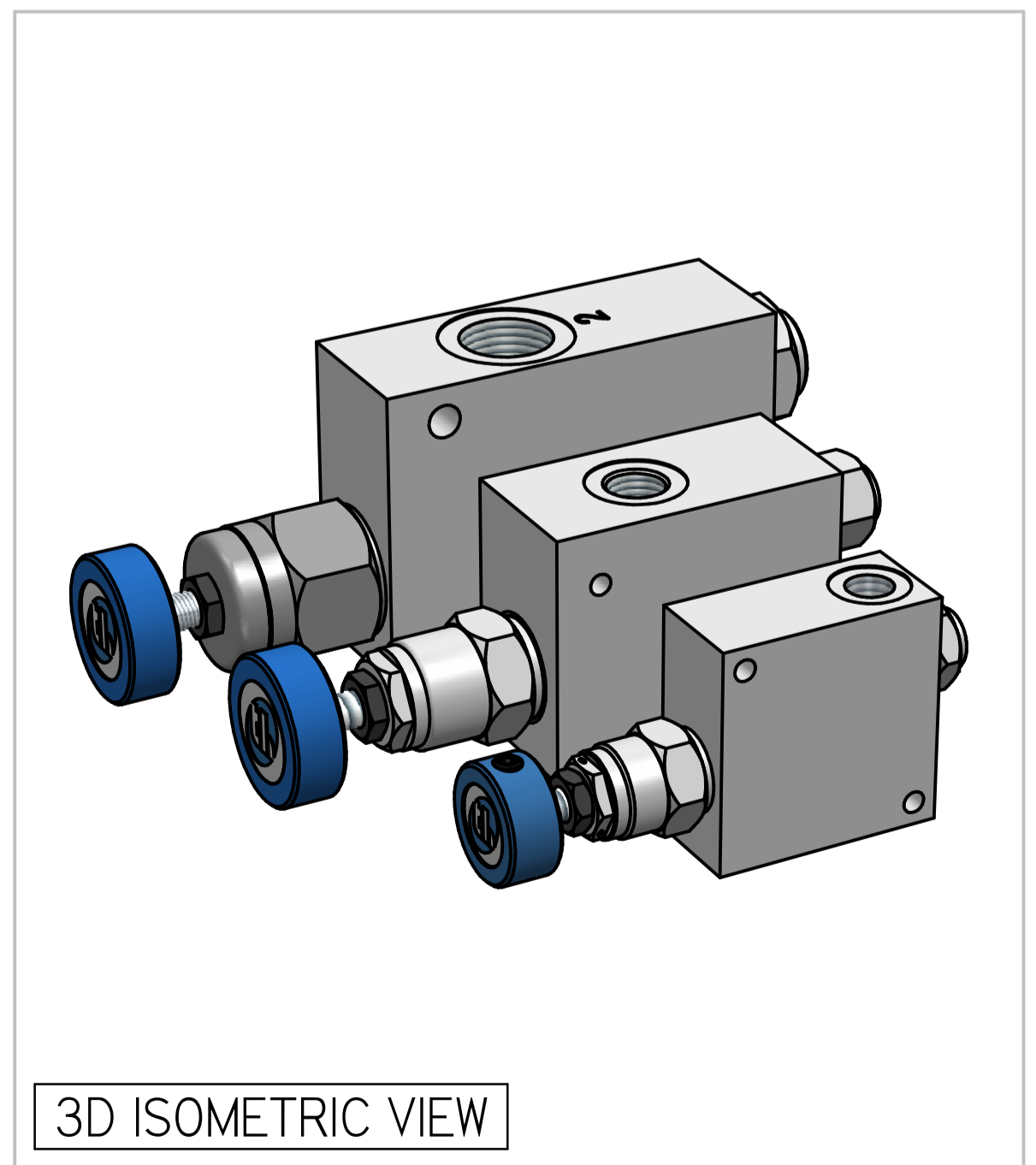
**Features**

Direct acting relief valves give quicker control of pressure. They also have zero leak characteristics which give load holding capabilities. They find excellent use in vertical cylinders for load control. Valves are designed for minimum pressure drop to ensure low power consumption. Hardened working parts ensure a long, reliable, trouble-free life.

**Specifications**

Figures based on: Oil Temp = 40°C Viscosity = 40 cSt

Rated Flow	Up to 160 lpm
Max Pressure	250 bar
Cartridge Material	Working parts : Hardened, ground steel External surfaces : Zinc plated
Weight	CBV06 1.300 kg CBV10 1.300 kg CBV20 1.300 kg
Manifold Material	Aluminium (upto 250 bar)
Mounting	Line
Seal Kit Number	SKCBV06 (Nitrile) SKCBV10 (Nitrile) SKCBV20 (Nitrile)
Filtration Level	BS5540/4 Class I8/I3 (25µ nominal)
Operating Temp	-20°C to +90°C (Standard Seals)
Leakage	Less than 0.3 millilitres/min (5 dpm)
Viscosity Range	5 to 500 cSt

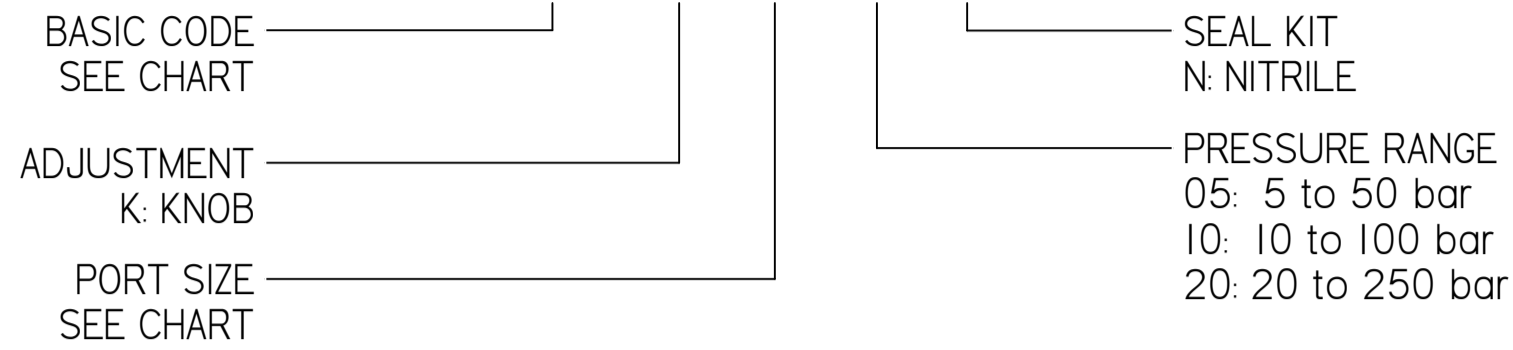


3D ISOMETRIC VIEW

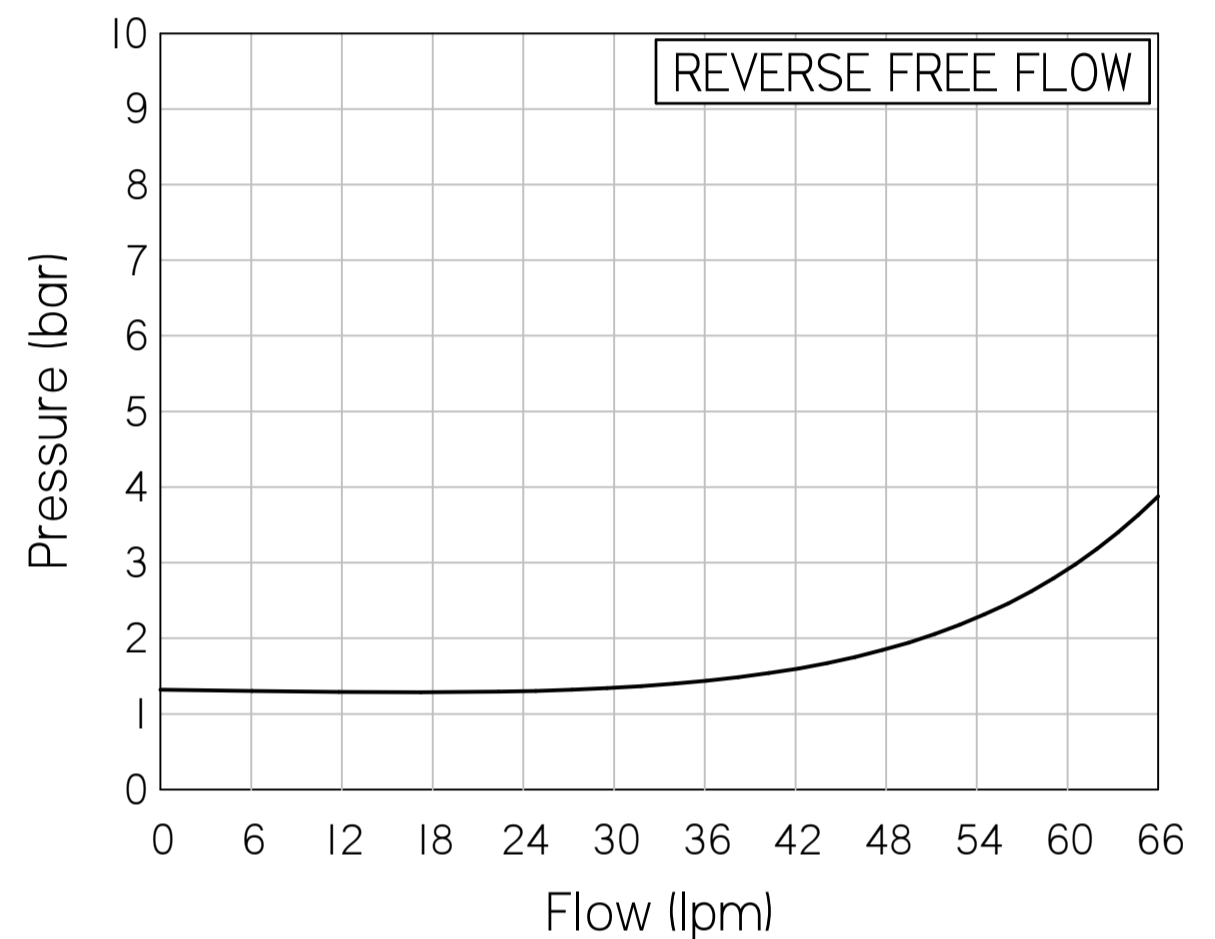
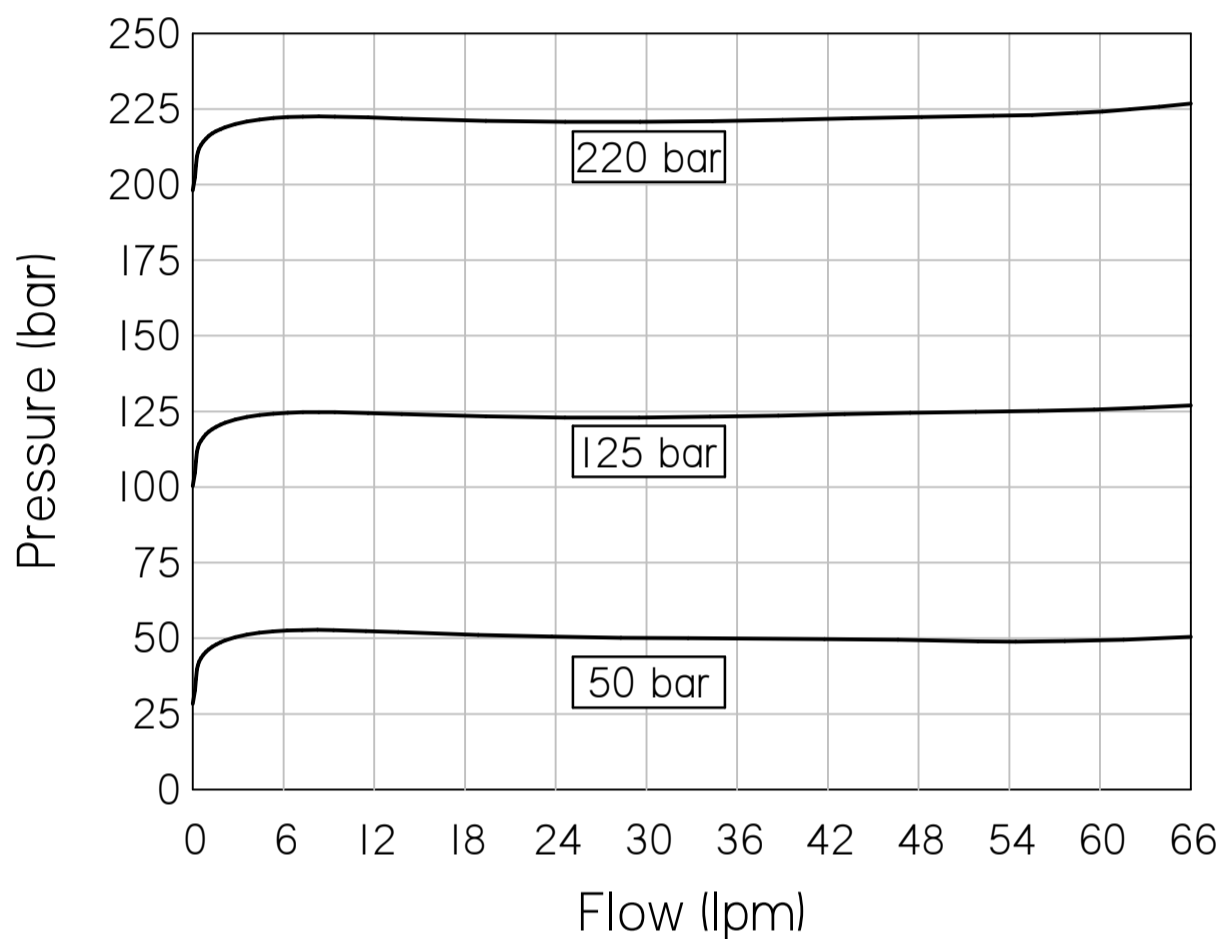
Where measurements are critical request certified drawings. We reserve the right to change specifications without notice.

**TO ORDER**

**CBV06 K 3W 20 N**

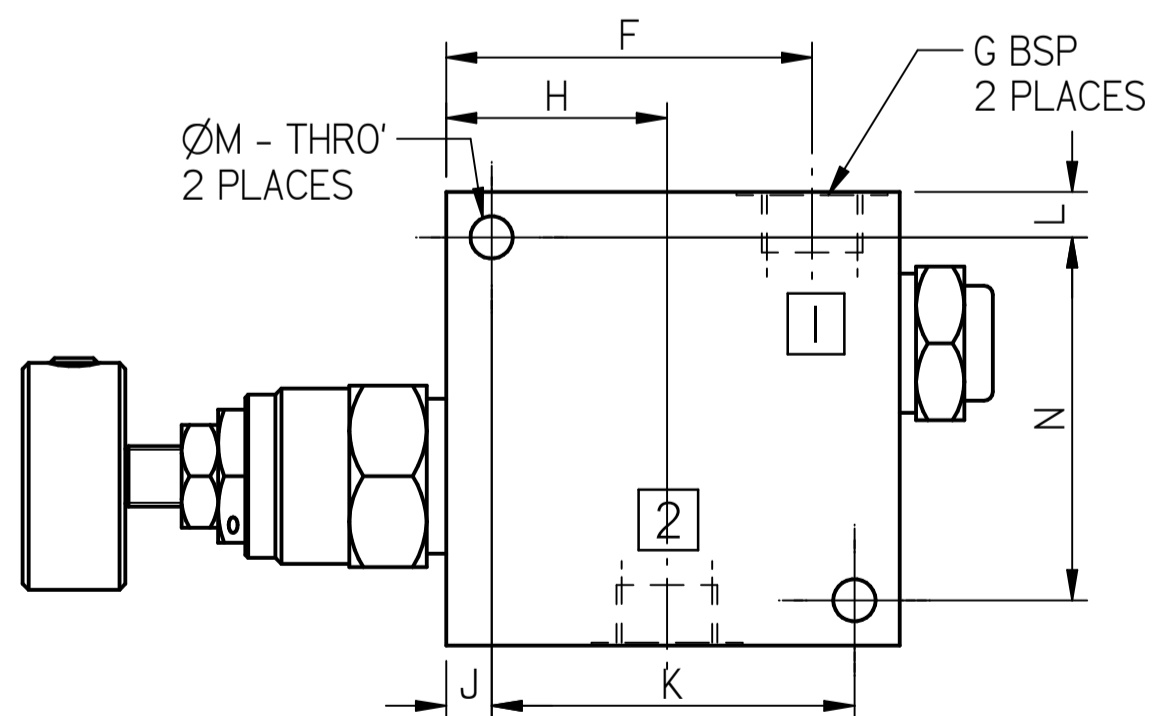
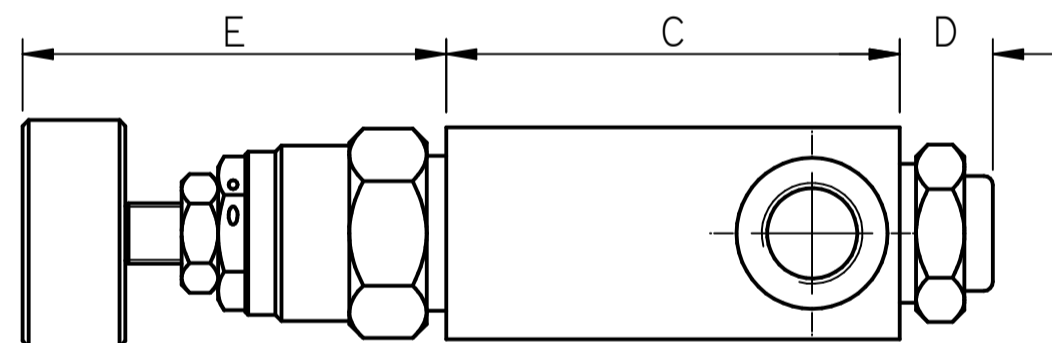
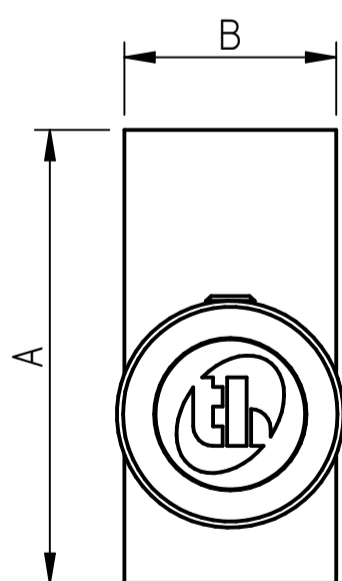
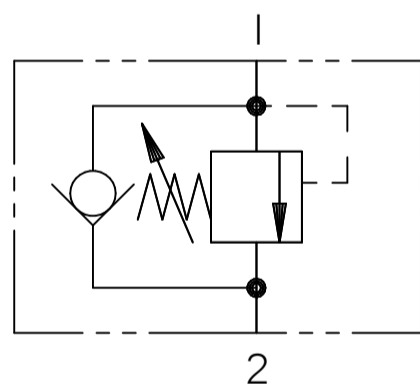


**PRESSURE CHARACTERISTICS**



**COMPLETE VALVE** 1/2" BSP PORTS

BASIC CODE: CBV10



Code	Flow	A	B	C	D	E	F	H	J	K	L	N	G	M
CBV06	30	75,0	35,0	75,0	15,4	75,0	60,5	36,5	7,5	60,0	7,5	60,0	3/8"	7,0
CBV10	60	83,0	50,0	100,0	24,0	90,0	78,0	41,0	15,	45,0	18,0	55,0	1/2"	7,0
CBV20	160	100,0	50,0	140,0	19,0	90,0	110,0	55,0	20,0	110,0	12,0	50,0	1"	11,0

Where measurements are critical request certified drawings. We reserve the right to change specifications without notice.