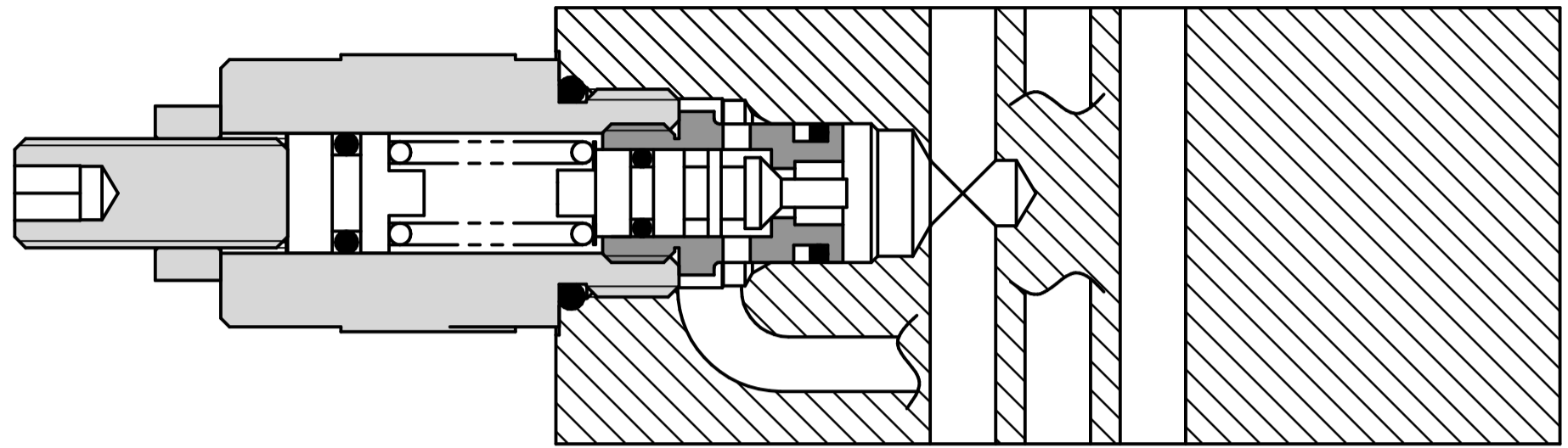
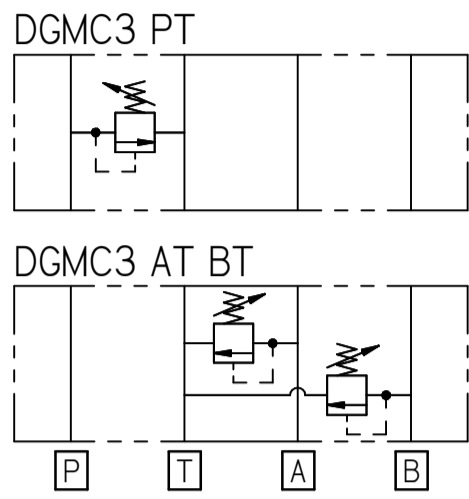


FLUID POWER SYMBOL



Application

The modular or sandwich valve is stacked along with directional valves in CETOP 3 interfaces to provide a check valve system in various ports depending on the configuration. The valve can be used to either prevent pressure spikes in the main pressure port 'P' or the actuator ports 'A' and 'B'.

Operation

As with all direct acting relief valves, when the pressure at P or A and/or B exceeds the spring force, the poppet shifts backward opening the radial holes and allowing the to the Tank Port. The pressure can be set by adjusting the tension in the spring.

Features

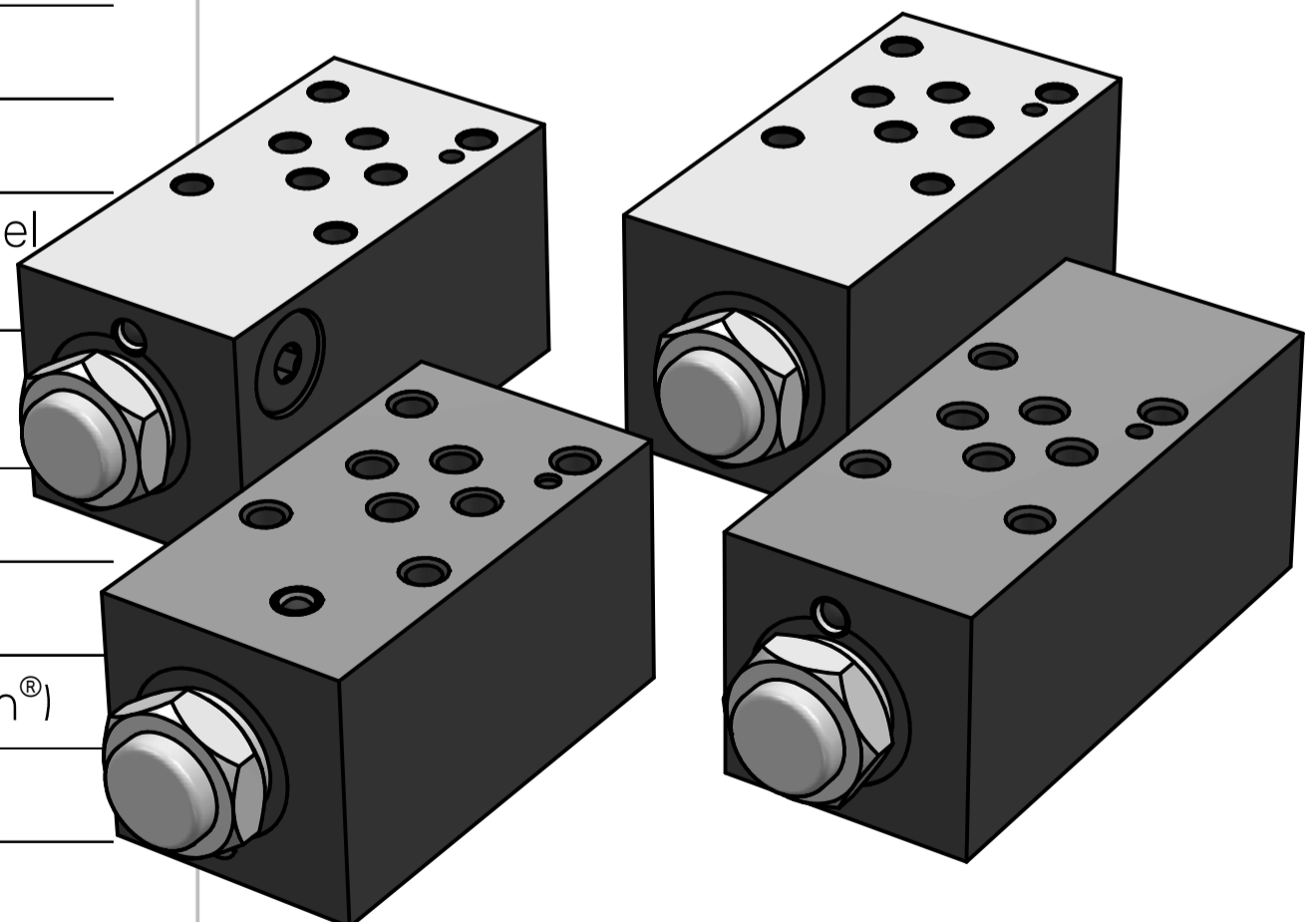
Sandwich construction offers a compact solution. Hardened working parts ensure a long, reliable and trouble-free life. The cartridge construction gives flexibility in servicing.

12

Specifications

Figures based on: Oil Temp = 40°C Viscosity = 40 cSt

Max Flow	60 lpm
Max Pressure	350 bar
Cartridge Material	Working parts : Hardened, ground steel External surfaces : Zinc plated
Weight	DGMC3 PT: 1.20 kgs DGMC3 AT BT: 1.36 kgs
Manifold Material	SG Iron
Mounting	CETOP3
Seal Kit Number	SKDGMC3 (Nitrile) SKDGMC3V (Viton®)
Filtration Level	BS5540/4 Class 18/13 (25µ nominal)
Operating Temp	-20°C to +90°C (Standard Seals)
Leakage	Less than 0.3 millilitres/min (5 dpm)
Viscosity Range	5 to 500 cSt

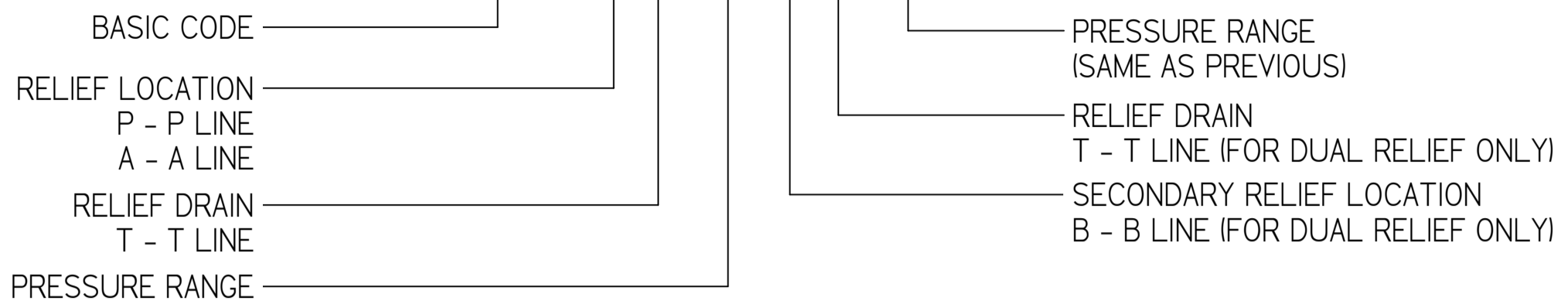


3D ISOMETRIC VIEW

Where measurements are critical request certified drawings. We reserve the right to change specifications without notice.

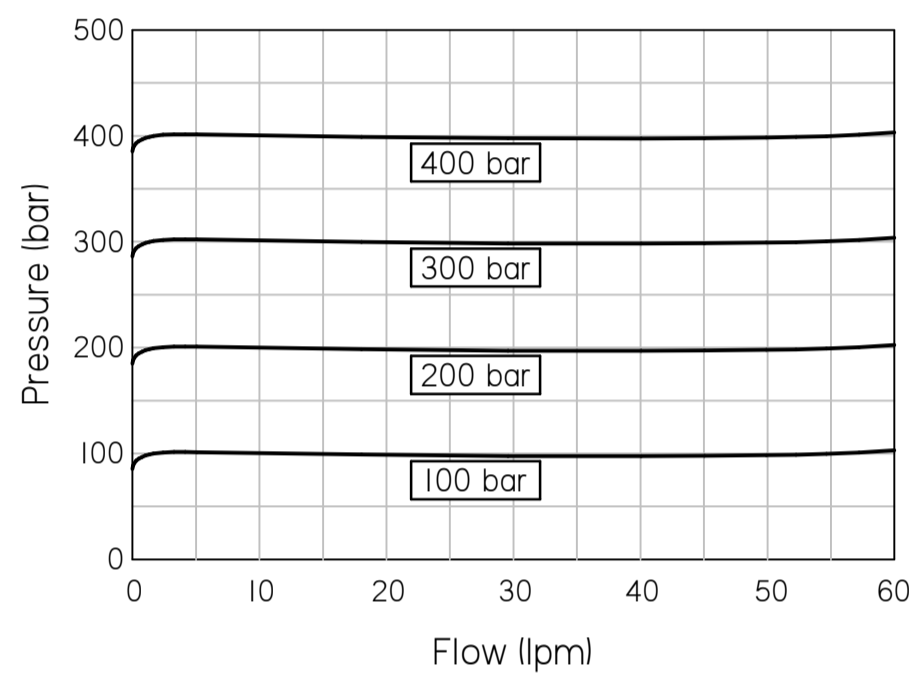
TO ORDER

DGMC3 A T 20 B T 20



20: 10 to 200 bar. Std setting 100 bar
40: 40 to 400 bar. Std setting 280 bar

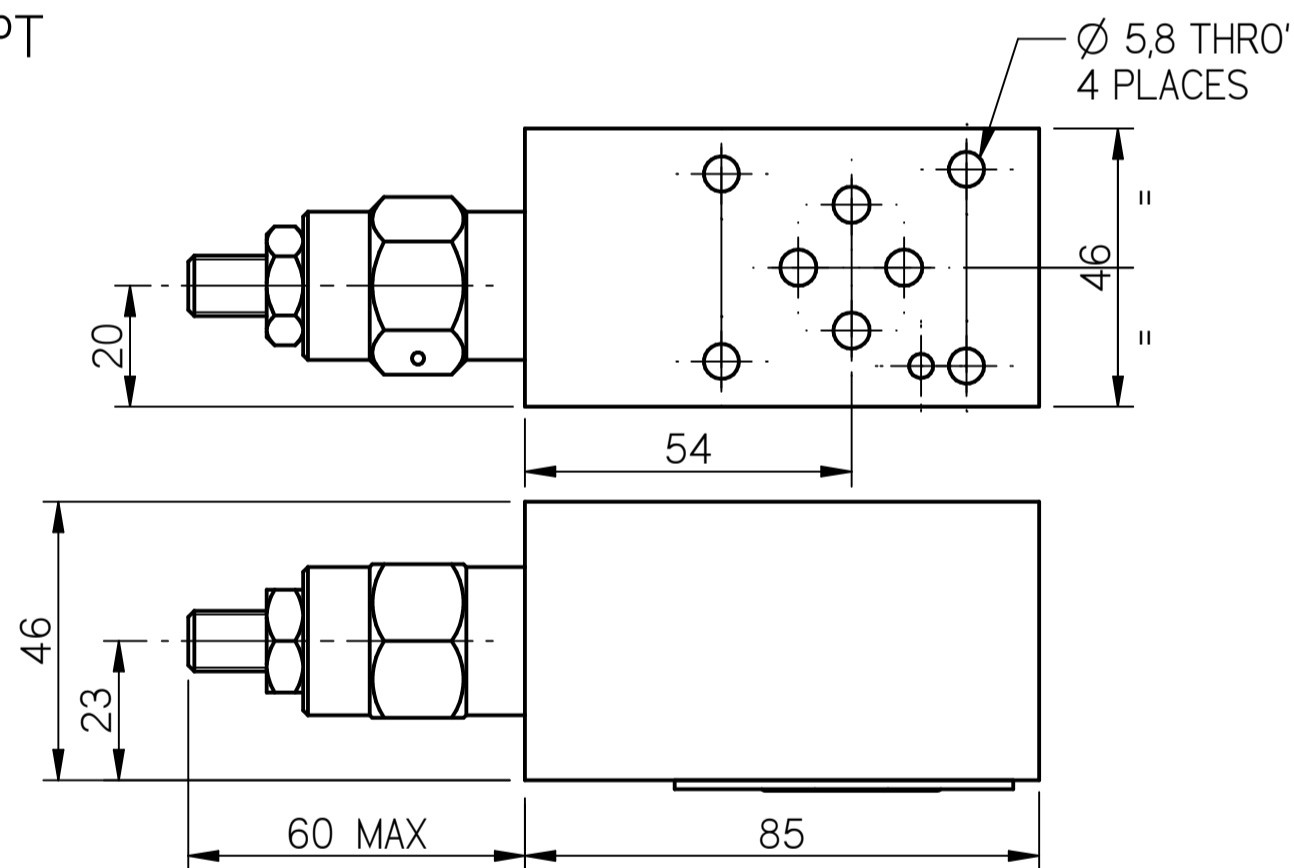
PRESSURE CHARACTERISTICS



COMPLETE VALVE

CETOP3

BASIC CODE: DGMC3 PT

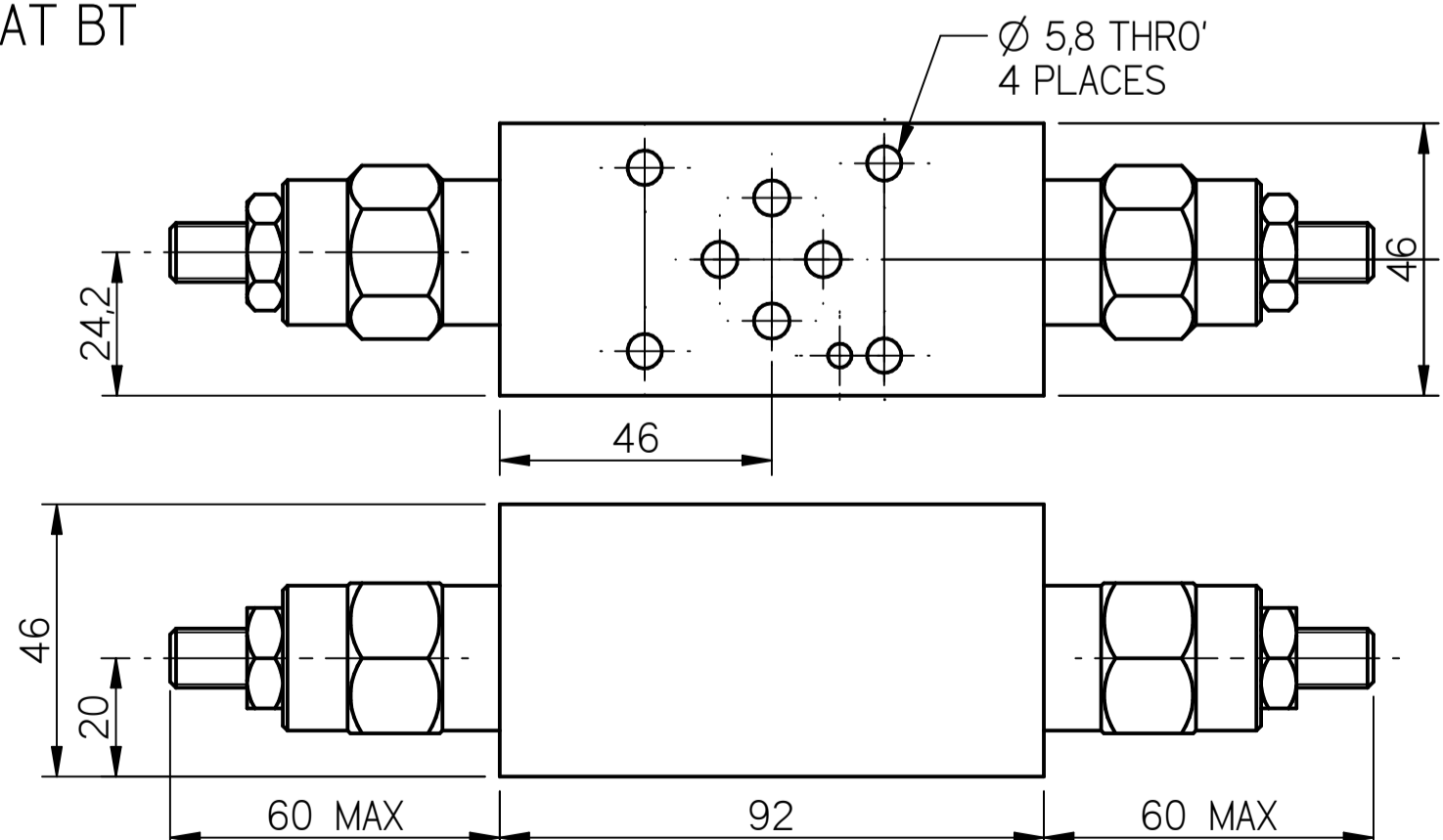


12

COMPLETE VALVE

CETOP3

BASIC CODE: DGMC3 AT BT



Where measurements are critical request certified drawings. We reserve the right to change specifications without notice.