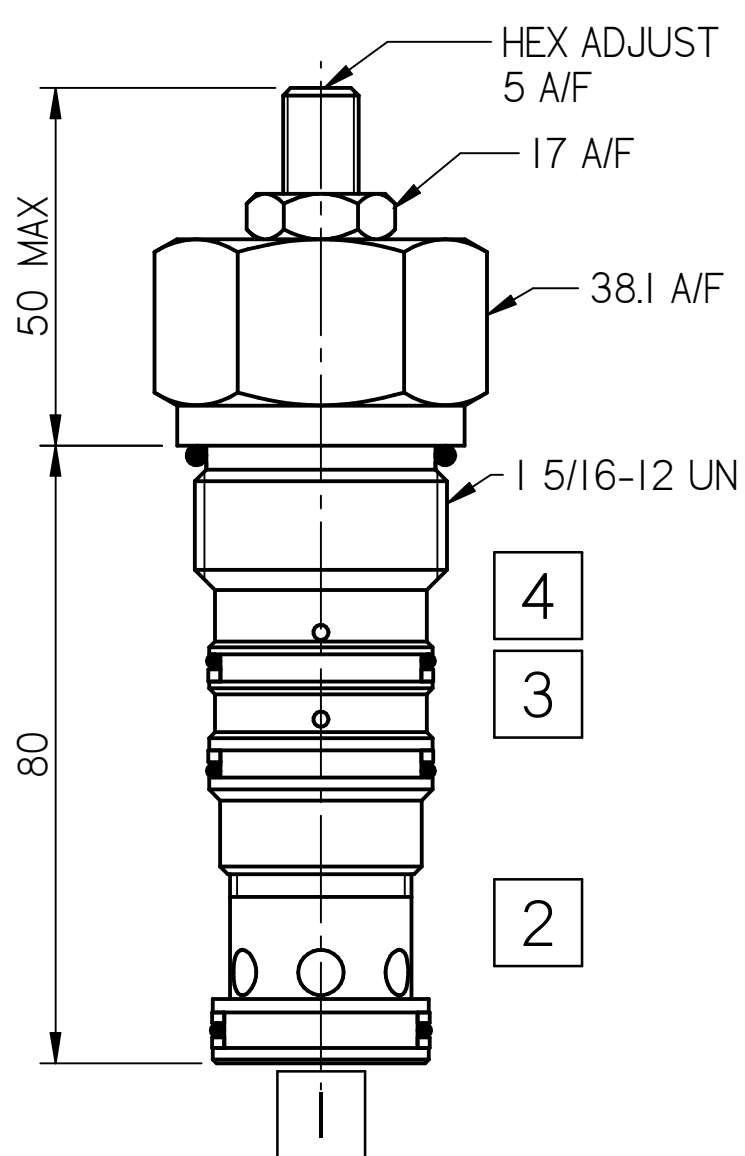
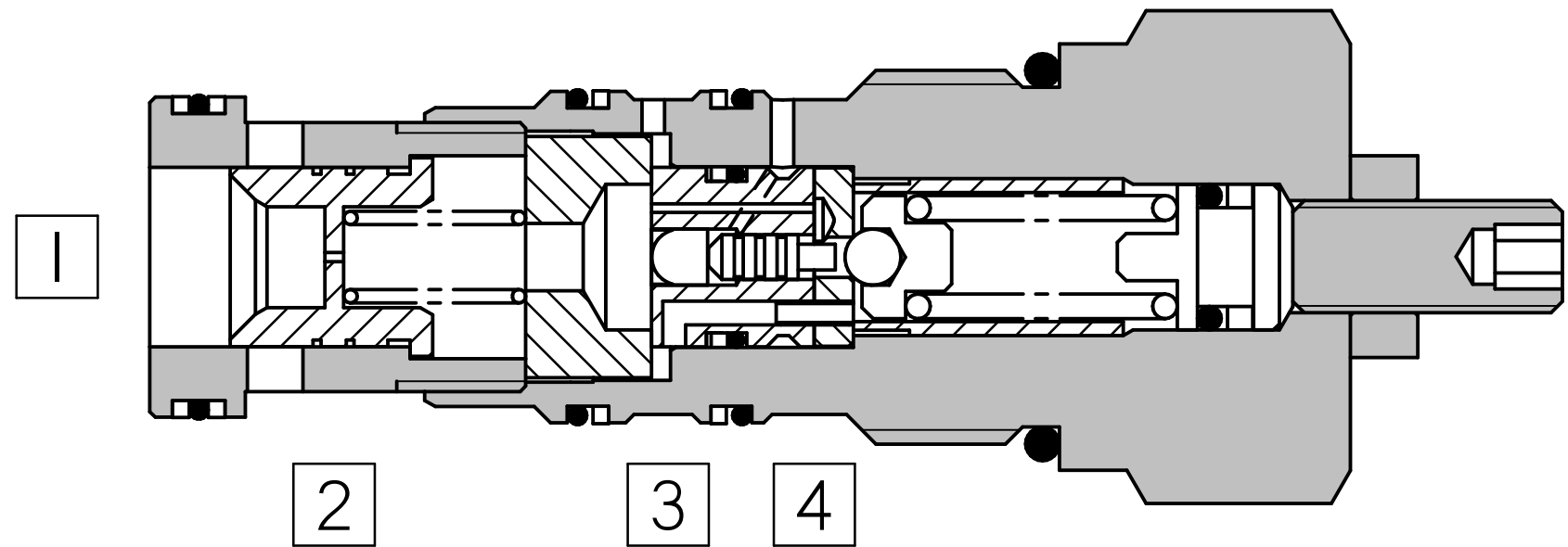
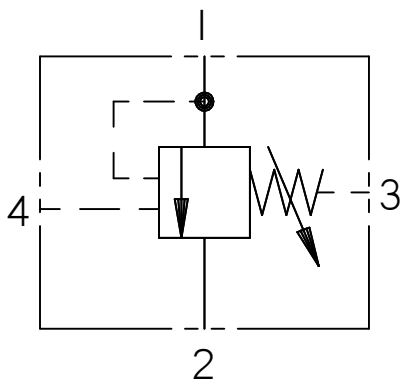


FLUID POWER SYMBOL



Application

These unloading valves are used to unload pumps, to tank when pressure in a separate part of the circuit reaches a pre-set level. The valves will close, causing the circuit to reload, when the pressure drops to approximately 85% of the unload pressure. The most common application is to maintain pressure in an accumulator to be used in emergency to operate essential hydraulic functions (eg. a brake circuit). The PUL valve has a drain port to ensure correct valve function while allowing the bypassed oil to be used for auxiliary circuits.

Operation

Inlet pressure is seen on the nose of the valve and system pressure

(downstream of the system check valve) operates on the system pilot port. When pressure rises to the valve setting, the relief section opens and the system pressure acts on the pilot piston to hold the valve in the open position. The ratio between the pilot piston diameter and the seat diameter to the relief valve pilot section ensures that the valve will be maintained in the fully open position until the system pressure drops to approximately 85% of the unload pressure.

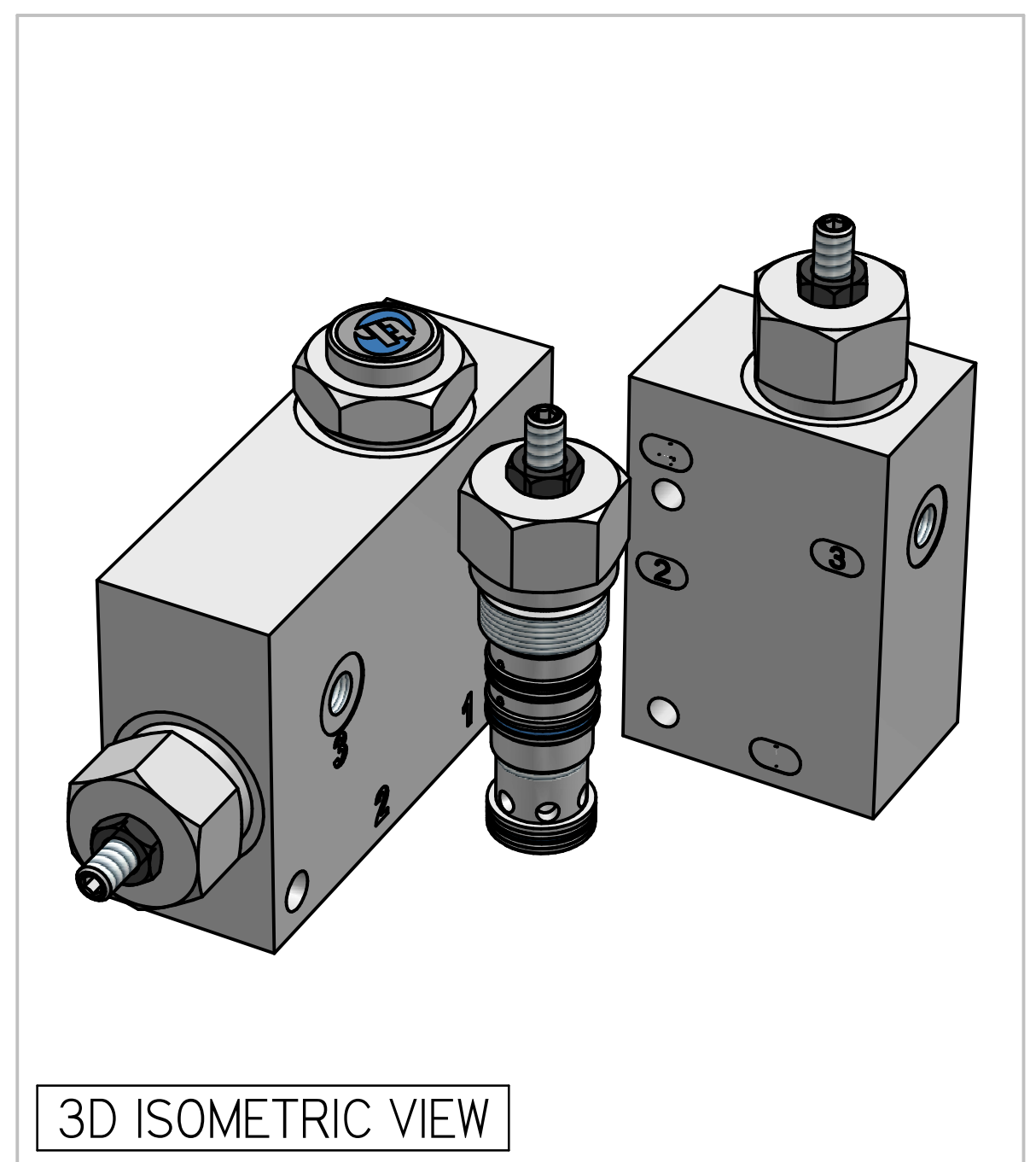
Features

Valve bodies are supplied as line bodies for the use in accumulator circuits. These include a built in check valve which provides with an internal connection to the valve pilot port.

Specifications

Figures based on: Oil Temp = 40°C Viscosity = 40 cSt

Rated Flow	250 lpm
Max Pressure	350 bar
Differential Unload	10-15%
Cartridge Material	Working parts : Hardened, ground steel External surfaces : Zinc plated
Weight (Cartridge only)	PUL250: 0.740 kg
Cavity Number	TH3145 (Refer Cavities Section)
Manifold Material	Aluminium (upto 250 bar) Add Suffix '729' for SG Iron (350 bar)
Torque into Cavity	100 Nm
Mounting	Line
Seal Kit Number	SKPUL250 (Nitrile) SKPUL250V (Viton®)
Filtration Level	BS5540/4 Class 18/13 (25µ nominal)
Operating Temp	-20°C to +90°C (Standard Seals)
Leakage	Less than 35 millilitres/min



Where measurements are critical request certified drawings. We reserve the right to change specifications without notice.

TO ORDER

PUL250 P 8W 35 N

BASIC CODE
PUL250 - CARTRIDGE ONLY
PULC250 - BODY WITH CHECK

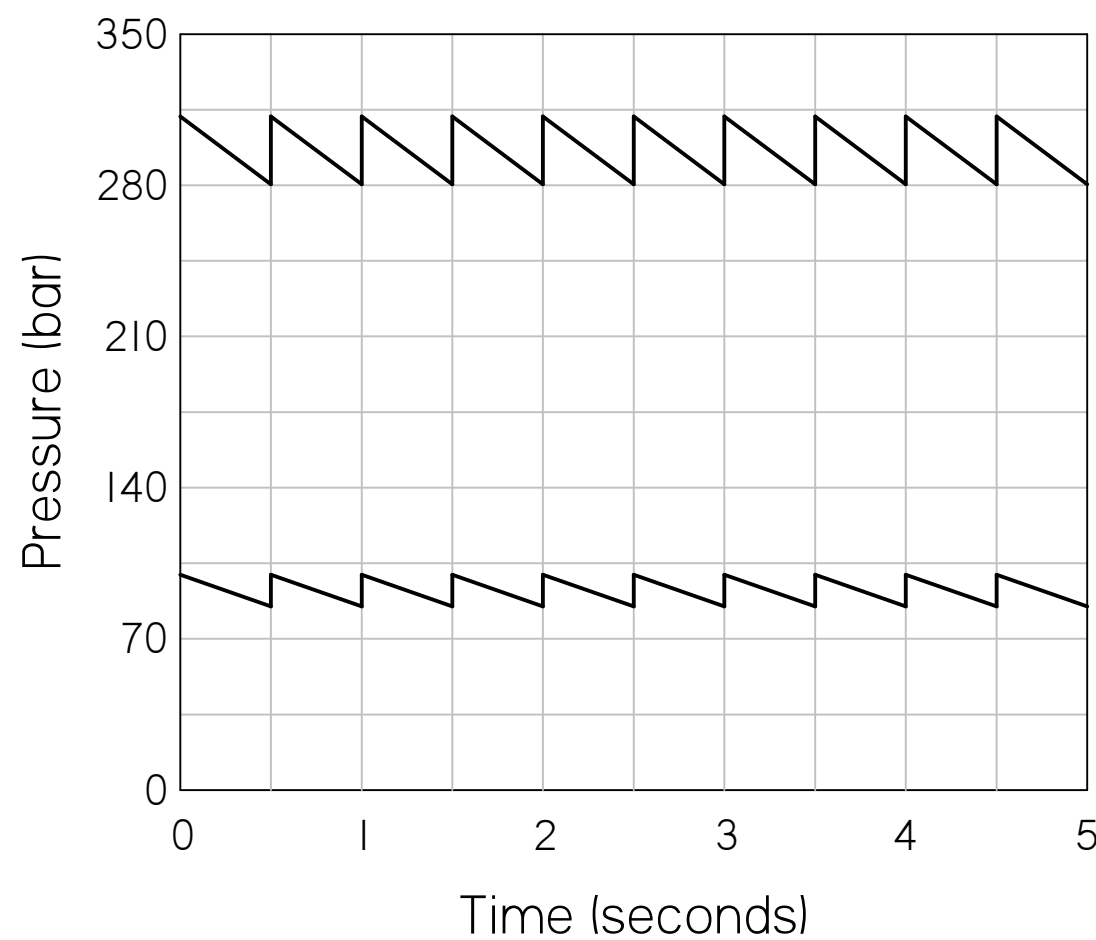
ADJUSTMENT
P: LEAKPROOF SCREW ADJUST

PORT SIZE
8W: 1" BSP PORTS
OMIT FOR CARTRIDGE

SEAL KIT
N: NITRILE
V: VITON

PRESSURE RANGE
20: 10 to 200 bar. Std setting 100 bar
35: 30 to 350 bar. Std setting 280 bar

PRESSURE CHARACTERISTICS



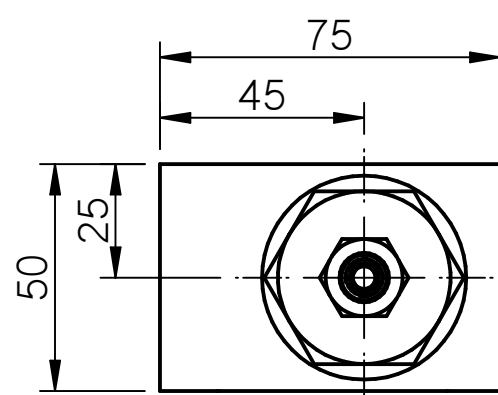
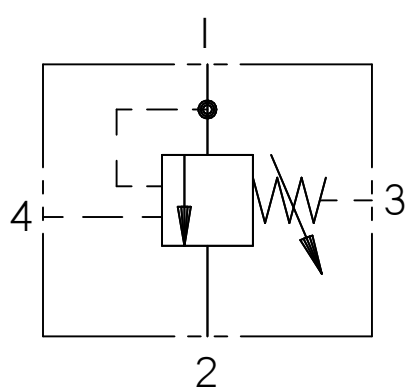
10

COMPLETE VALVE 1" BSP PORTS

BASIC CODE: PUL250 8W

ONLY Body Part Numbers (BSP)

Aluminium 1" Z10275 SG Iron 1" Z10275S

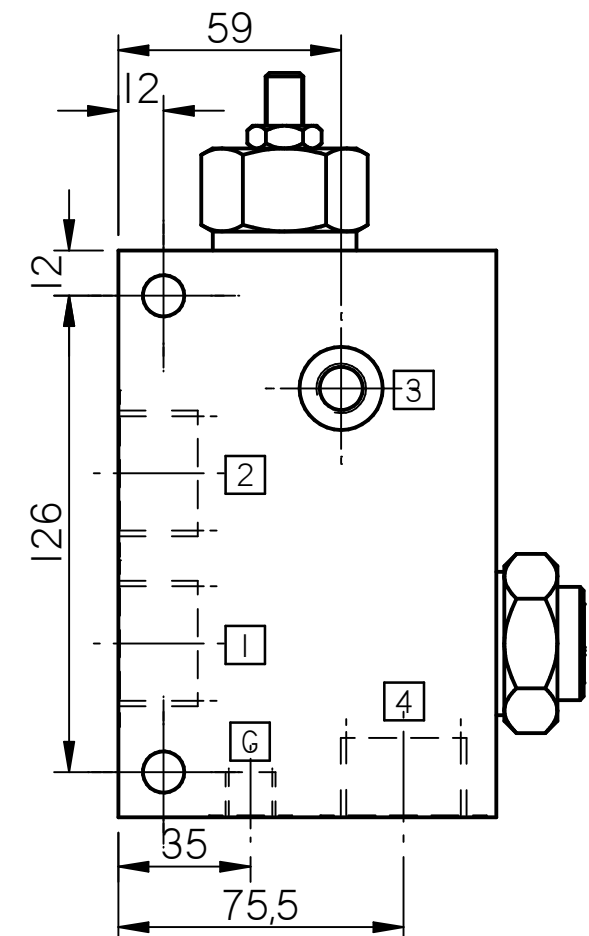
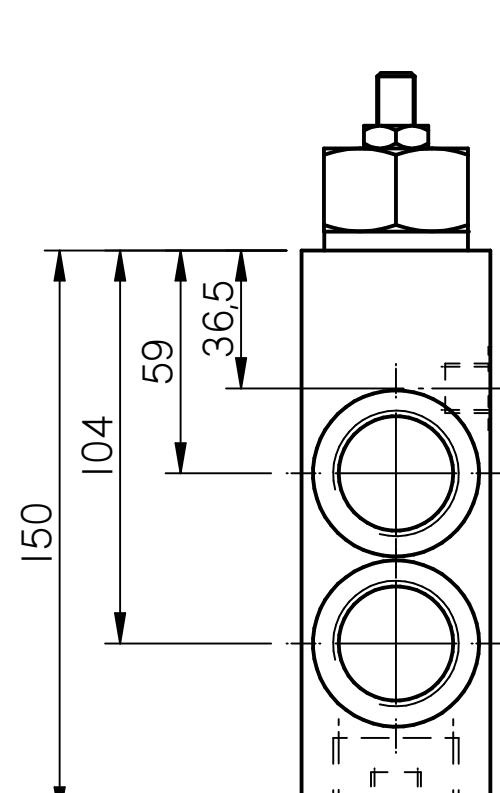
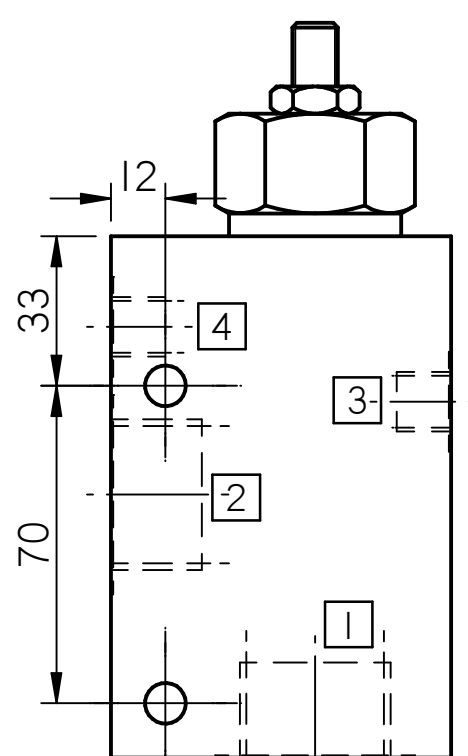
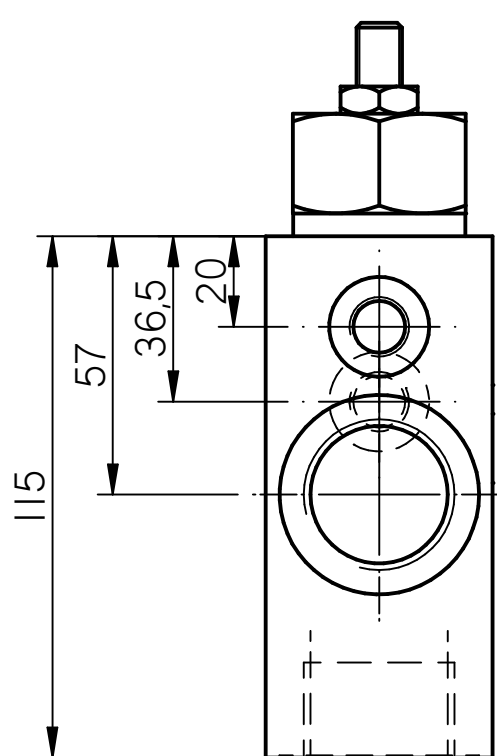
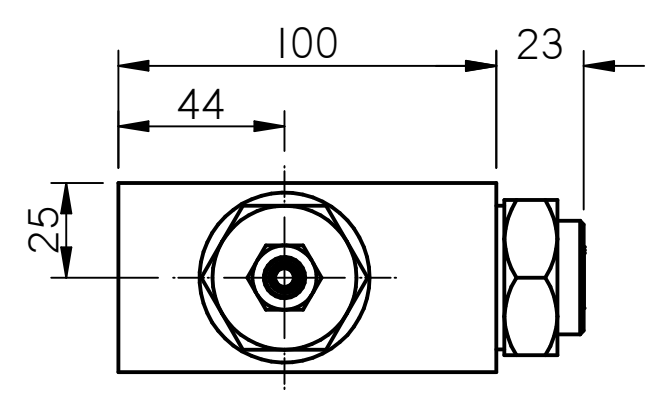
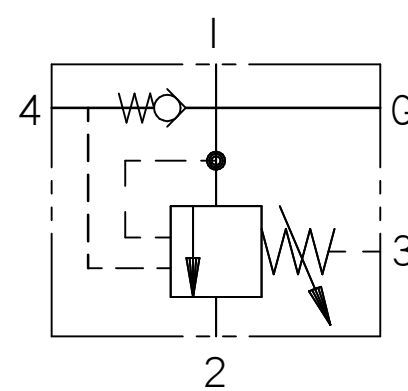


COMPLETE VALVE 1" BSP PORTS

BASIC CODE: PULC250 8W

ONLY Body Part Numbers (BSP)

Aluminium 1" Z10271 SG Iron 1" Z10271S



Where measurements are critical request certified drawings. We reserve the right to change specifications without notice.