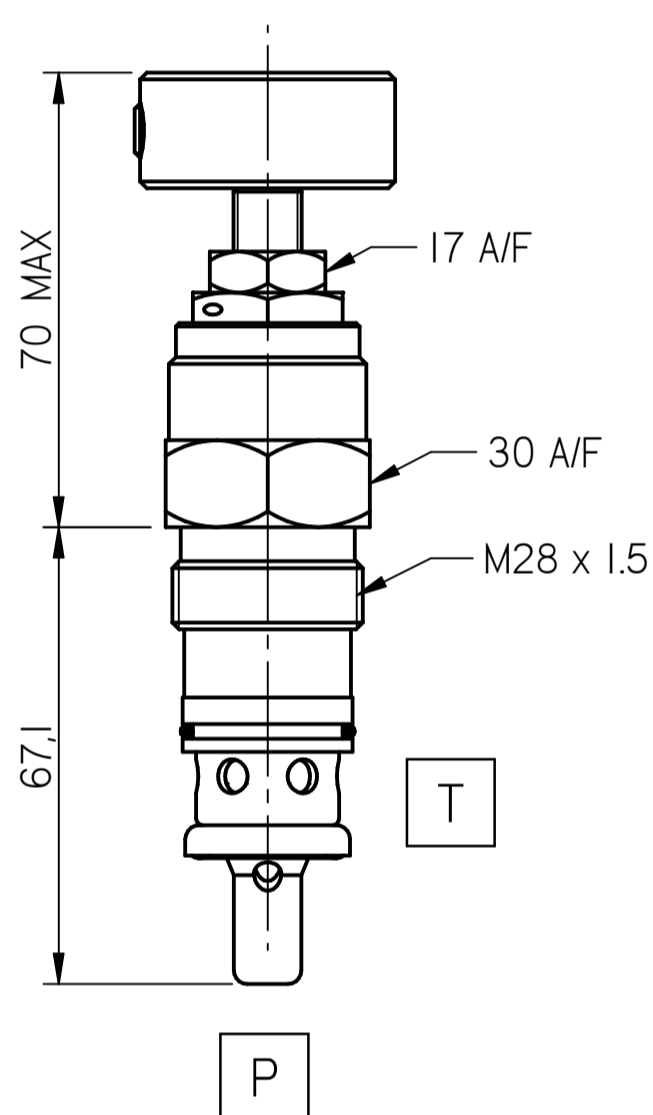
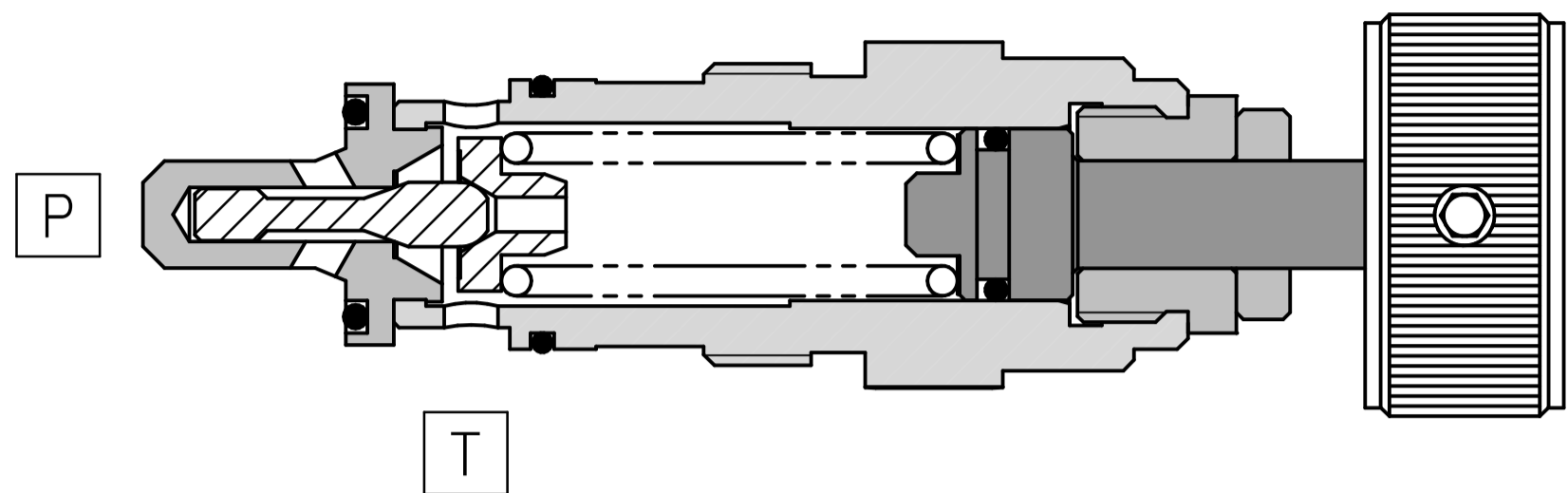
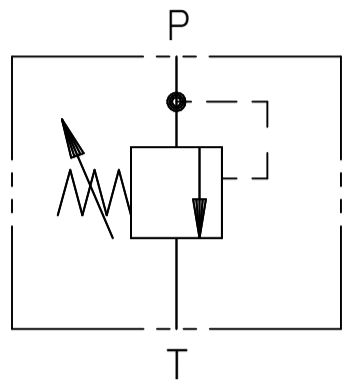


FLUID POWER SYMBOL



Application

Pressure Relief valves are used to limit the pressure in the system as set on the valve. Direct Relief Valves are applicable in systems where quick pressure release is of prime concern for safety. This is an economical solution for systems having small flows. The valve is a zero leak valve due to the metal sealing of the poppet on the seat. The DR10 can also be used for pilot systems.

Operation

As with all direct acting pressure relief valves, when the pressure at the inlet (P) exceeds the spring force set by the adjuster, the poppet moves back, opening the inlet (I) to outlet (T). This

relieves the pressure to tank. The dampening buffer on the nose of the valve dampens the vibrations caused by pressure variations on the valve. This gives it a smooth opening and closing characteristic with minimum chatter.

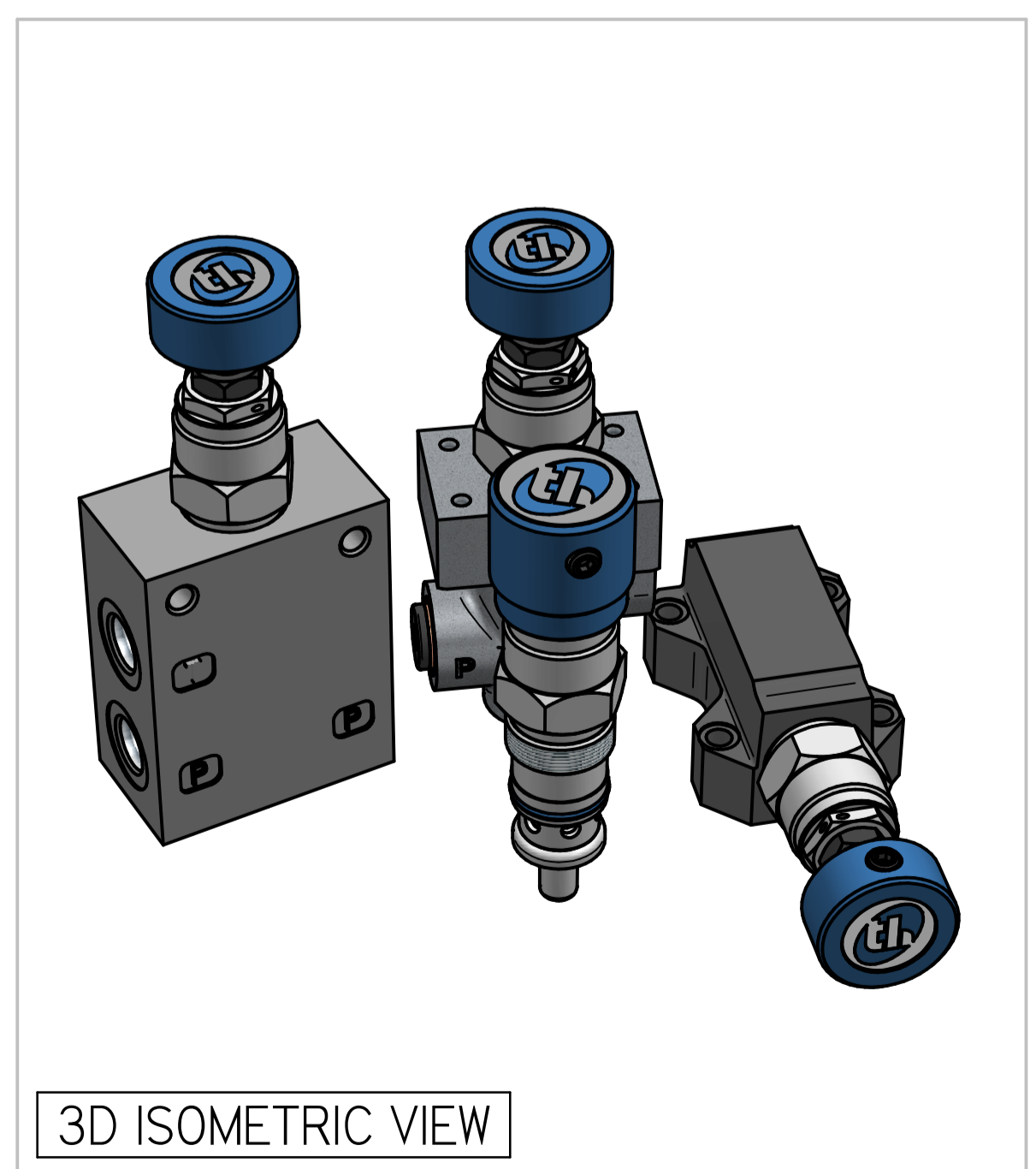
Features

Matched ground and hardened working parts give a long and trouble-free life. Consistent stable operation providing low pressure over ride even with increasing flows. Cartridge type construction gives maximum flexibility in mounting.

Specifications

Figures based on: Oil Temp = 40°C Viscosity = 40 cSt

Rated Flow	30 lpm
Max Pressure	350 bar
Cartridge Material	Working parts : Hardened, ground steel External surfaces : Zinc plated
Weight (Cartridge only)	DR06: 0.390 kg
Cavity Number	CDR06 (Refer Cavities Section)
Manifold Material	SG Iron (upto 350 bar)
Torque into Cavity	45 Nm
Mounting	Line/Subplate
Seal Kit Number	SKDR06 (Nitrile) SKDR06V (Viton®)
Filtration Level	BS5540/4 Class 18/13 (25µ nominal)
Operating Temp	-20°C to +90°C (Standard Seals)
Leakage	Less than 0.3 millilitres/min (5 dpm)
Viscosity Range	5 to 500 cSt



3D ISOMETRIC VIEW

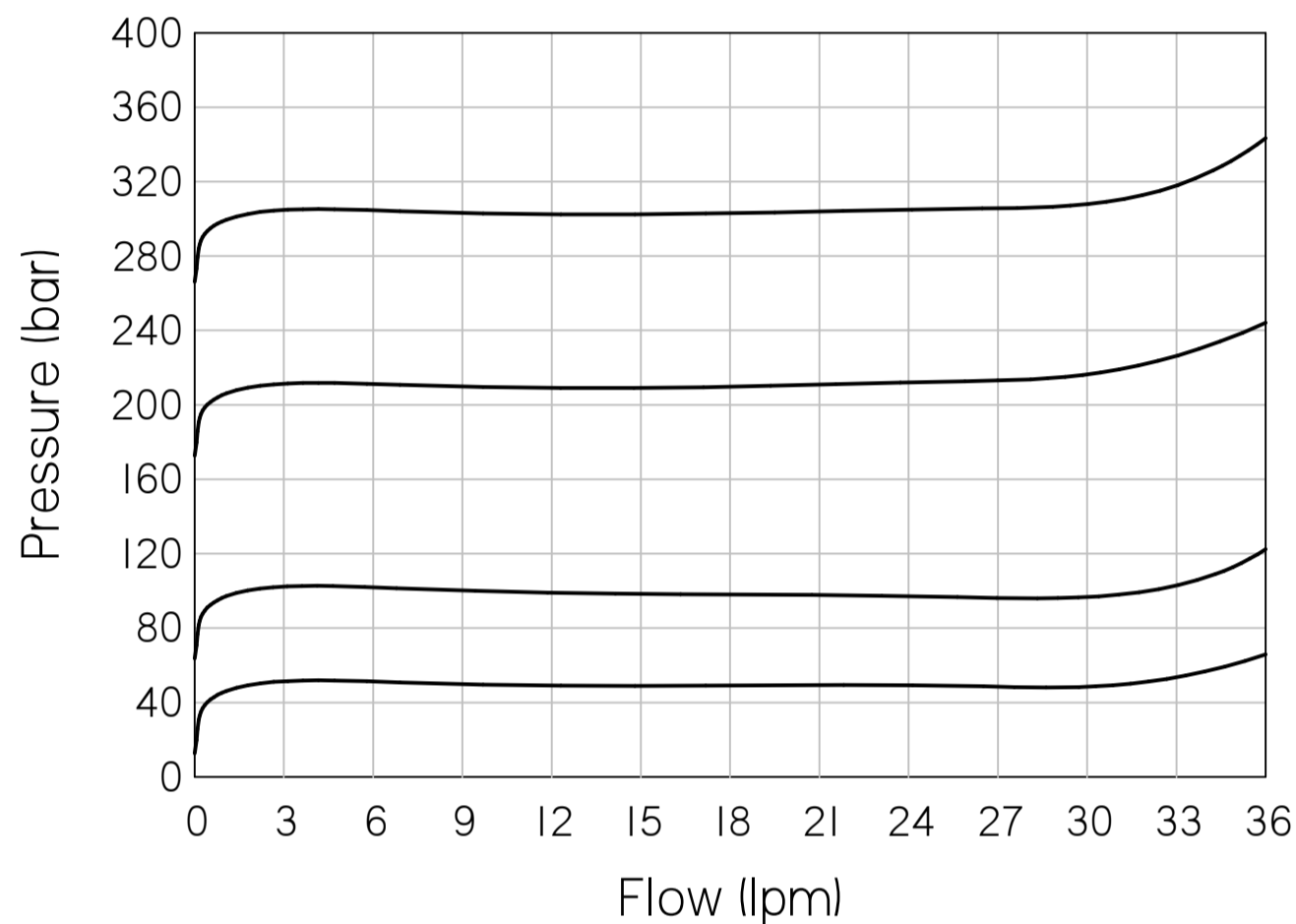
Where measurements are critical request certified drawings. We reserve the right to change specifications without notice.

TO ORDER

DR06 K 2W 20

BASIC CODE	_____	PRESSURE RANGE	05: 5 to 50 bar
ADJUSTMENT	_____	10: 10 to 100 bar	
P: CAP		20: 20 to 200 bar	
K: KNOB		30: 30 to 350 bar	
PORT SIZE	_____		
2W: 1/4 BSP PORTS			
3W: 3/8 BSP PORTS			
OMIT FOR CARTRIDGE			

PRESSURE CHARACTERISTICS

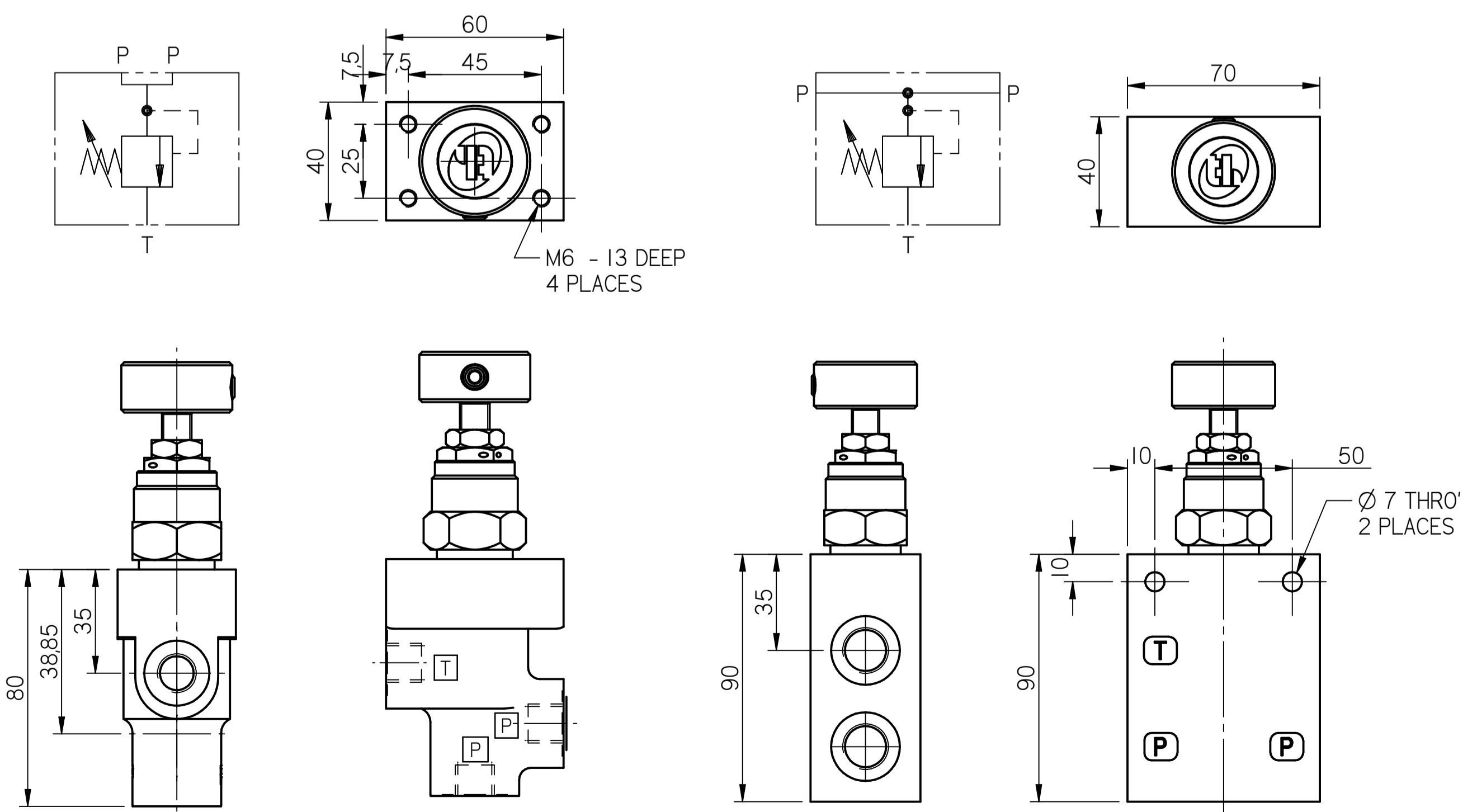


COMPLETE VALVE 1/4" BSP PORTS

BASIC CODE: DR06 2W
ONLY Body Part Numbers (BSP)
Aluminium SG Iron
- - 1/4" Z10121

COMPLETE VALVE 3/8" BSP PORTS

BASIC CODE: DR06 3W
ONLY Body Part Numbers (BSP)
Aluminium SG Iron
- - 3/8" Z10403



Where measurements are critical request certified drawings. We reserve the right to change specifications without notice.

TO ORDER

DRG06 K 20

BASIC CODE _____
 ADJUSTMENT _____
 K: KNOB
 P: CAP

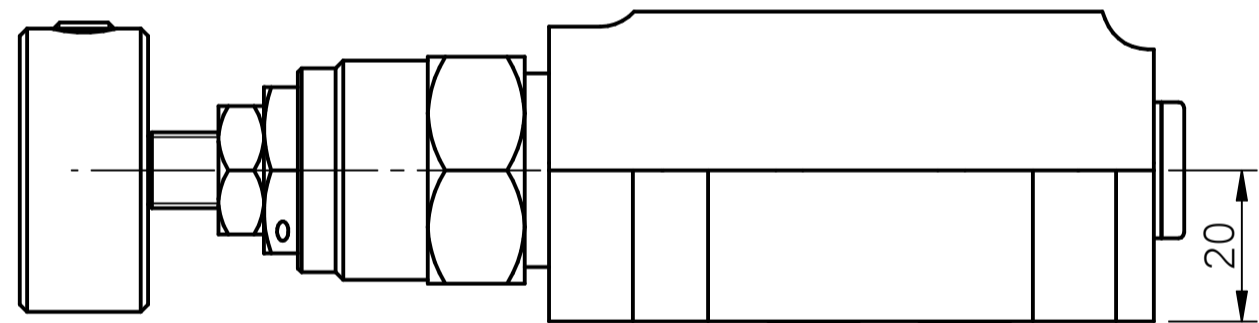
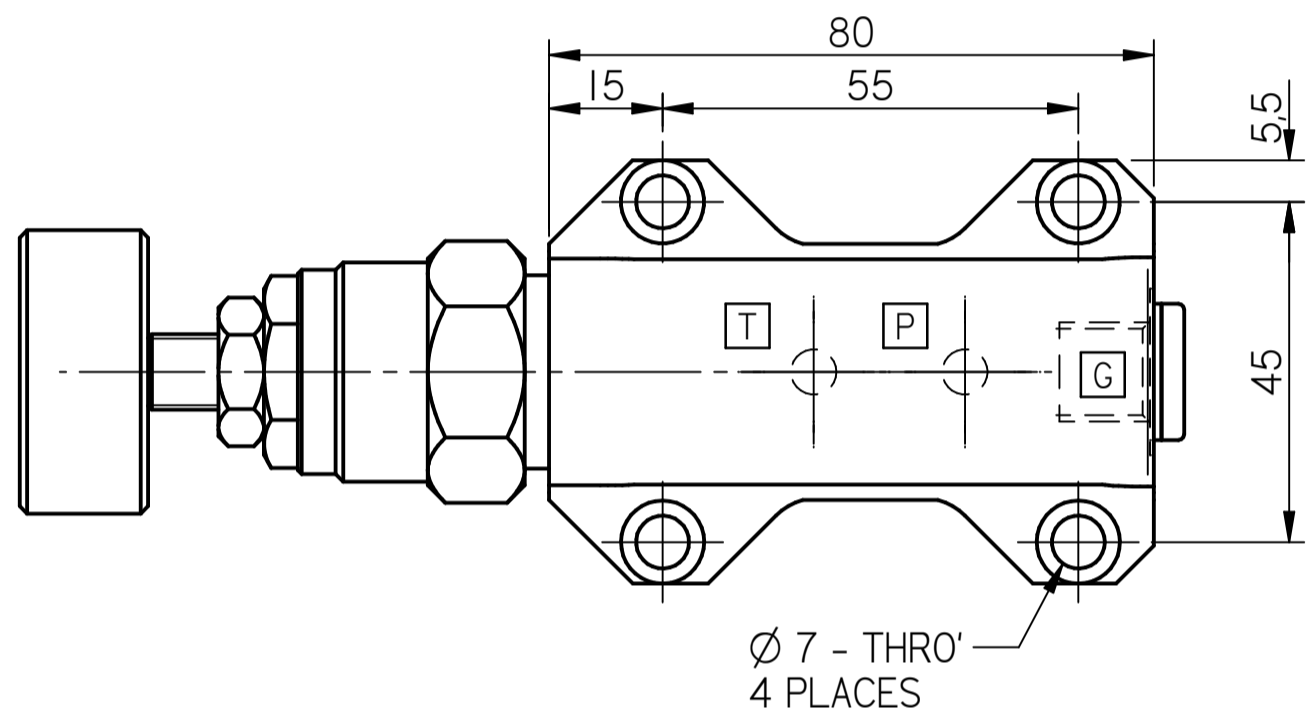
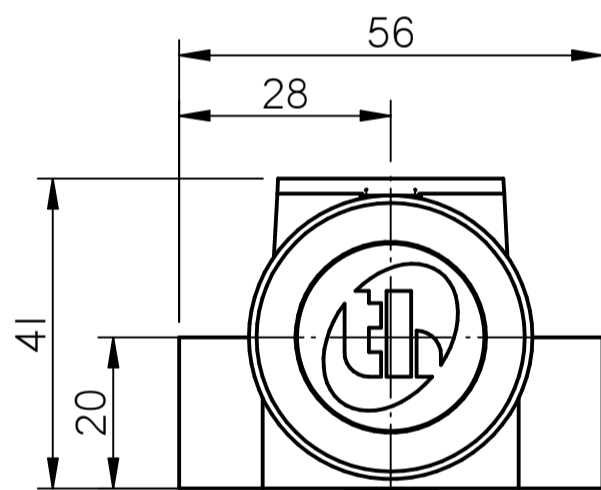
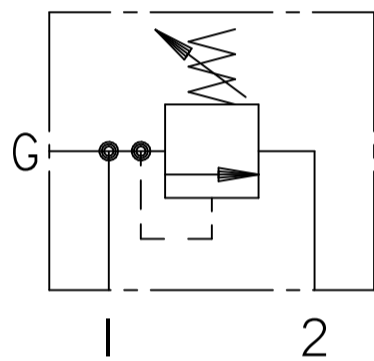
PORT SIZE
 2W: 1/4 BSP PORTS
 3W: 3/8 BSP PORTS
 OMIT FOR CARTRIDGE

COMPLETE VALVE SUBPLATE MOUNTING

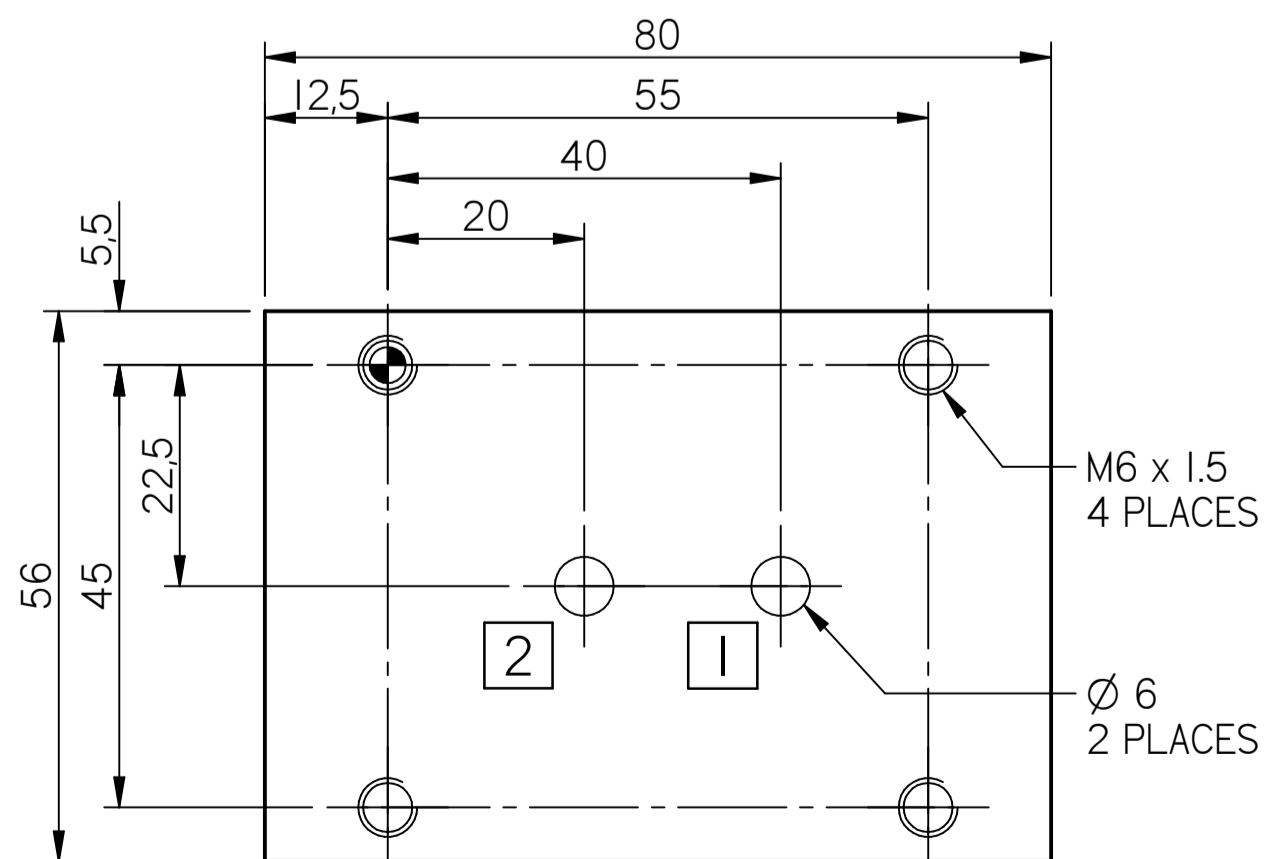
BASIC CODE: DRG06

ONLY Body Part Numbers

Aluminium	SG Iron	
-	NG06	Z10141



SUBPLATE DIMENSIONS



Where measurements are critical request certified drawings. We reserve the right to change specifications without notice.

NOTES

